



# Monthly Treasury Statement

## of Receipts and Outlays of the United States Government

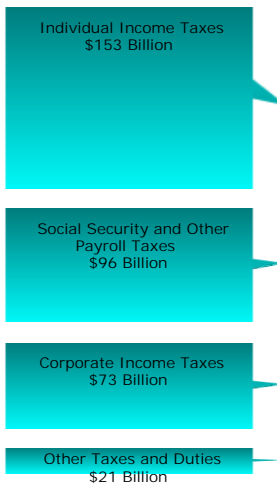
For Fiscal Year 2015 Through **June 30, 2015**, and Other Periods

### Highlight

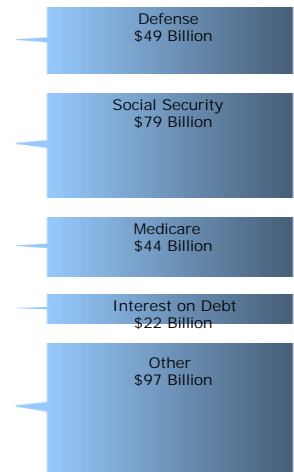
**This issue includes the semi-annual interest payment to trust funds investing in government securities.**

#### Receipts, Outlays, and Surplus/Deficit for June 2015

Receipts by Source:



Outlays by Function:

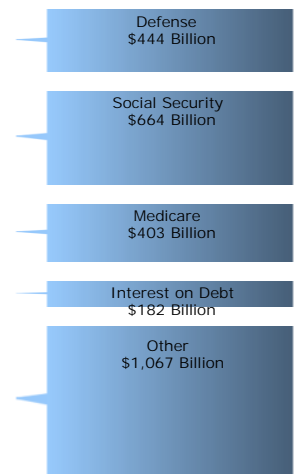


#### Cumulative Receipts, Outlays, and Surplus/Deficit through Fiscal Year 2015

Receipts by Source:



Outlays by Function:



Compiled and Published by

*Department of the Treasury*  
**Bureau of the Fiscal Service**

## Contents

Summary	Page 2	Receipts/Outlays by Month	Page 31
Receipts	Page 6	Federal Trust Funds/Securities	Page 33
Outlays	Page 7	Receipts by Source/Outlays by Function	Page 34
Means of Financing	Page 21	Explanatory Notes	Page 35

## Introduction

The *Monthly Treasury Statement of Receipts and Outlays of the United States Government (MTS)* is prepared by the Bureau of the Fiscal Service, Department of the Treasury and, after approval by the Fiscal Assistant Secretary of the Treasury, is normally released on the 8th workday of the month following the reporting month. The publication is based on data provided by Federal entities, disbursing officers, and Federal Reserve banks.

### AUDIENCE

The *MTS* is published to meet the needs of those responsible for or interested in the cash position of the Treasury, those who are responsible or interested in the Government's budget results, and individuals and businesses whose operations depend upon or are related to the Government's financial operations.

### DISCLOSURE STATEMENT

This statement summarizes the financial activities of the Federal Government and off-budget Federal entities conducted in accordance with the Budget of the U.S. Government, i.e., receipts and outlays of funds, the surplus or deficit, and the means of financing the deficit or disposing of the surplus. Information is presented on a modified cash basis; receipts are accounted for on the basis of collections; refunds of receipts are treated as deductions from gross receipts; revolving and

management fund receipts, reimbursements and refunds of monies previously expended are treated as deductions from gross outlays; and interest on the public debt (public issues) is recognized on the accrual basis. Major information sources include accounting data reported by Federal entities, disbursing officers, and Federal Reserve banks.

### TRIAD OF PUBLICATIONS

The *MTS* is part of a triad of Treasury financial reports. The *Daily Treasury Statement* is published each working day of the Federal Government. It provides data on the cash and debt operations of the Treasury based upon reporting of the Treasury account balances by Federal Reserve banks. The *MTS* is a report of Government receipts and outlays, based on agency reporting. The *Combined Statement of Receipts, Outlays, and Balances of the United States Government* is the official publication of the detailed receipts and outlays of the Government. It is published annually in accordance with legislative mandates given to the Secretary of the Treasury.

### DATA SOURCES AND INFORMATION

The Explanatory Notes section of this publication provides information concerning the flow of data into the *MTS* and sources of information relevant to the *MTS*.

**Table 1. Summary of Receipts, Outlays, and the Deficit/Surplus of the U.S. Government, Fiscal Years 2014 and 2015, by Month**

Period	[\$ millions]		
	Receipts	Outlays	Deficit/Surplus (-)
<b>FY 2014</b>			
October	198,927	289,511	90,584
November	182,453	317,679	135,226
December	285,041	231,821	-53,220
January	295,997	306,247	10,250
February	144,349	337,880	193,532
March	215,846	252,741	36,895
April	414,237	307,383	-106,853
May	199,889	329,860	129,971
June	323,646	253,127	-70,519
July	214,493	309,113	94,621
August	194,248	322,925	128,677
September	351,245	245,441	-105,803
<b>Year-to-Date</b>	<b>3,020,371</b>	<b>3,503,730</b>	<b>483,359</b>
<b>FY 2015</b>			
October	212,719	334,432	121,713
November	191,436	248,254	56,818
December	335,327	333,463	-1,864
January	306,742	324,289	17,546
February	139,388	331,738	192,350
March	234,187	287,105	52,918
April	471,801	315,092	-156,709
May	212,386	294,771	82,385
June	342,933	291,157	-51,776
<b>Year-to-Date</b>	<b>2,446,920</b>	<b>2,760,301</b>	<b>313,381</b>

Note: Details may not add to totals due to rounding.

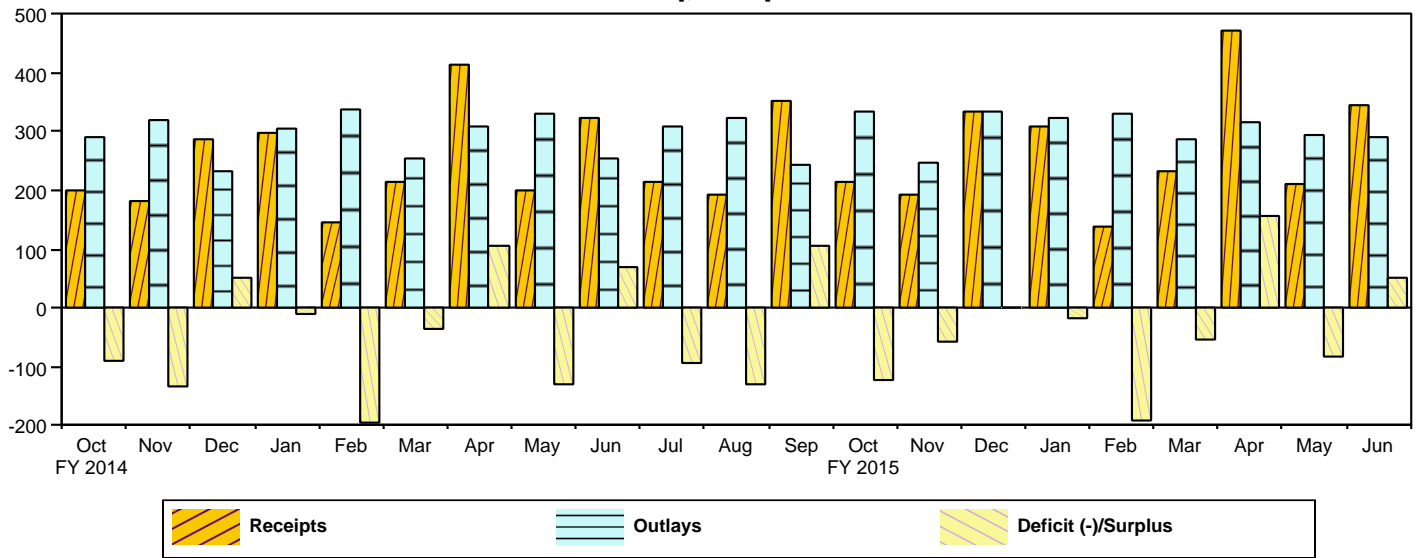
**Table 2. Summary of Budget and Off-Budget Results and Financing of the U.S. Government, June 2015 and Other Periods**

[\$ millions]					
Classification	This Month	Current Fiscal Year to Date	Budget Estimates Full Fiscal Year <sup>1</sup>	Comparable Prior Period Year to Date (2014)	Budget Estimates Next Fiscal Year (2016) <sup>1</sup>
<b>Total On-Budget and Off-Budget Results:</b>					
Total Receipts	342,933	2,446,920	3,176,072	2,260,385	3,525,179
On-Budget Receipts	269,307	1,858,261	2,410,502	1,698,344	2,724,214
Off-Budget Receipts	73,626	588,659	765,570	562,041	800,965
Total Outlays	291,157	2,760,301	3,758,577	2,626,250	3,999,467
On-Budget Outlays	261,815	2,230,434	3,005,957	2,122,829	3,201,064
Off-Budget Outlays	29,342	529,867	752,620	503,421	798,403
Total Surplus (+) or Deficit (-)	+51,776	-313,381	-582,505	-365,865	-474,288
On-Budget Surplus (+) or Deficit (-)	+7,492	-372,173	-595,455	-424,485	-476,850
Off-Budget Surplus (+) or Deficit (-)	+44,284	+58,792	+12,950	+58,620	+2,562
Total On-Budget and Off-Budget Financing	-51,776	313,381	582,505	365,865	474,288
<b>Means of Financing:</b>					
Borrowing from the Public	20,862	290,971	726,454	586,593	602,161
Reduction of Operating Cash, Increase (-)	-55,393	-96,038	-41,698	-50,913	.....
By Other Means	-17,245	118,344	-102,251	-169,814	-127,873

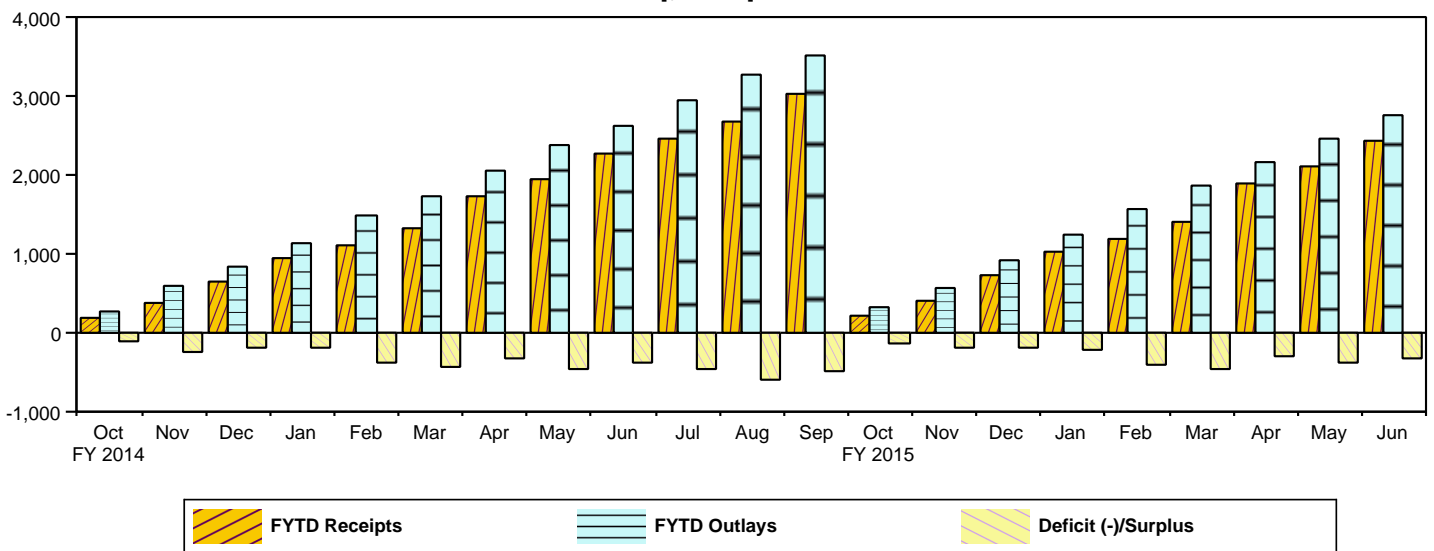
<sup>1</sup> These estimates are based on the FY 2016 Budget, released by the Office of Management and Budget on February 2, 2015

Note: Details may not add to totals due to rounding.  
... No Transactions

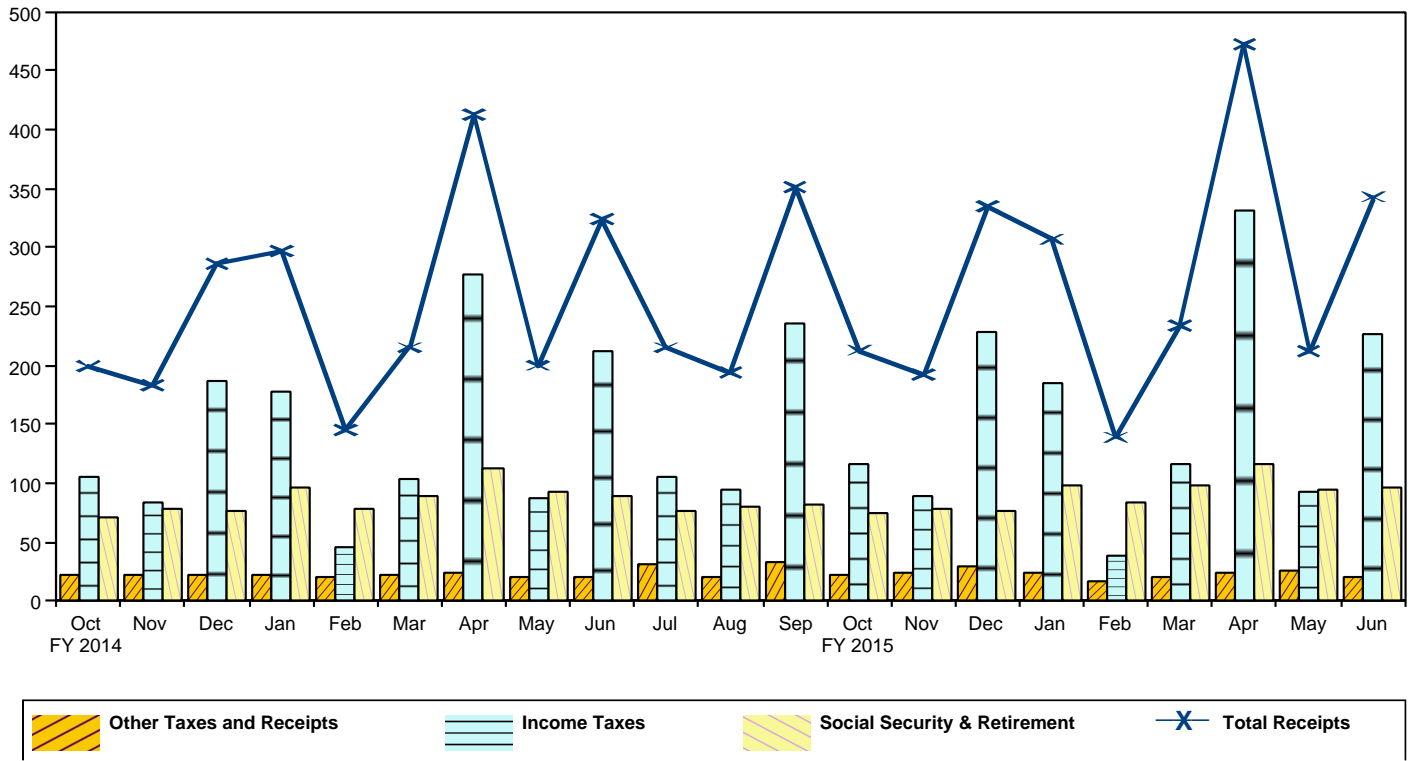
**Figure 1. Monthly Receipts, Outlays, and Budget Deficit/Surplus of the U.S. Government, Fiscal Years 2014 and 2015**  
[\$ billions]



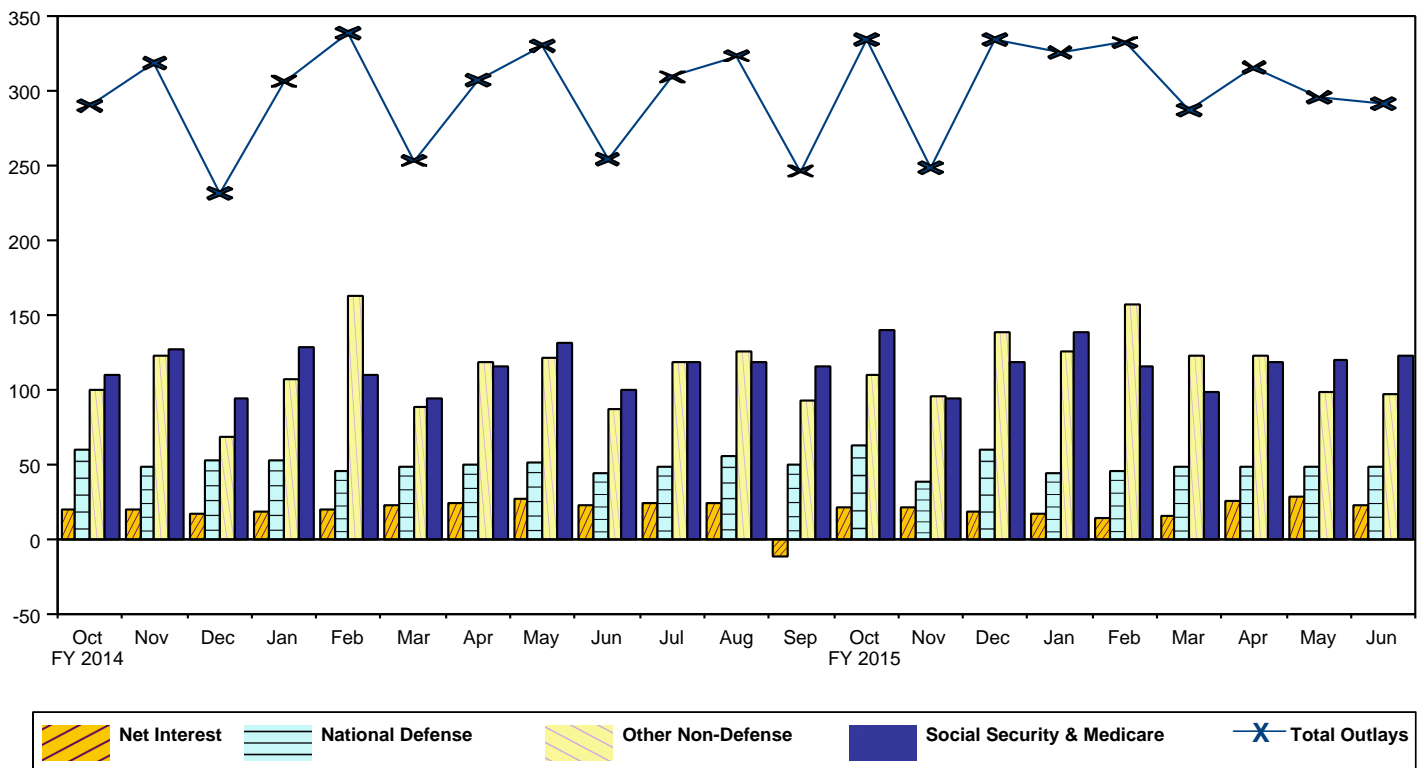
**Figure 2. Monthly Receipts, Outlays, and Budget Deficit/Surplus of the U.S. Government, Cumulative, Fiscal Years 2014 and 2015**  
[\$ billions]



**Figure 3. Monthly Receipts of the U.S. Government, by Source, Fiscal Years 2014 and 2015**  
[\$ billions]



**Figure 4. Monthly Outlays of the U.S. Government, by Function, Fiscal Years 2014 and 2015**  
[\$ billions]



**Table 3. Summary of Receipts and Outlays of the U.S. Government, June 2015 and Other Periods**

[\$ millions]				
Classification	This Month	Current Fiscal Year to Date	Comparable Prior Period Year to Date	Budget Estimates Full Fiscal Year <sup>1</sup>
<b>Budget Receipts</b>				
Individual Income Taxes	152,827	1,167,500	1,045,759	1,478,076
Corporation Income Taxes	72,768	255,453	235,018	341,688
Social Insurance and Retirement Receipts:				
Employment and General Retirement (Off-Budget)	73,626	588,659	562,041	765,570
Employment and General Retirement (On-Budget)	21,837	182,389	175,253	239,431
Unemployment Insurance	409	42,084	44,613	56,351
Other Retirement	289	2,680	2,572	3,660
Excise Taxes	7,100	60,087	58,012	95,898
Estate and Gift Taxes	1,254	15,112	13,935	19,738
Customs Duties	2,941	26,334	24,725	36,762
Miscellaneous Receipts	9,882	106,622	98,457	138,898
<b>Total Receipts</b>	<b>342,933</b>	<b>2,446,920</b>	<b>2,260,385</b>	<b>3,176,072</b>
<b>(On-Budget)</b>	<b>269,307</b>	<b>1,858,261</b>	<b>1,698,344</b>	<b>2,410,502</b>
<b>(Off-Budget)</b>	<b>73,626</b>	<b>588,659</b>	<b>562,041</b>	<b>765,570</b>
<b>Budget Outlays</b>				
Legislative Branch	337	3,197	3,049	4,899
Judicial Branch	585	5,221	5,074	7,567
Department of Agriculture	10,565	110,303	111,950	147,536
Department of Commerce	778	6,515	5,775	9,971
Department of Defense--Military Programs	47,082	422,808	432,060	567,702
Department of Education	14,706	60,413	46,969	103,288
Department of Energy	2,279	18,874	17,436	30,140
Department of Health and Human Services	85,036	754,791	684,210	1,012,950
Department of Homeland Security	3,460	31,033	31,424	45,685
Department of Housing and Urban Development	2,162	30,917	29,543	42,390
Department of the Interior	1,319	8,899	8,373	13,008
Department of Justice	1,882	19,099	20,924	36,087
Department of Labor	3,848	34,364	44,342	52,797
Department of State	1,960	17,756	19,015	30,521
Department of Transportation	6,601	50,923	53,303	80,208
Department of the Treasury:				
Interest on Treasury Debt Securities (Gross)	93,014	318,225	353,620	431,591
Other	1,923	107,850	38,197	74,784
Department of Veterans Affairs	12,897	117,647	110,884	160,797
Corps of Engineers	533	4,958	4,875	7,463
Other Defense Civil Programs	5,002	49,066	43,197	59,725
Environmental Protection Agency	726	4,860	6,378	8,325
Executive Office of the President	11,531	289	270	401
General Services Administration	-41	-757	-260	-1,178
International Assistance Programs	1,261	17,988	15,059	24,006
National Aeronautics and Space Administration	1,937	13,564	12,480	18,097
National Science Foundation	613	4,666	4,796	7,082
Office of Personnel Management	5,997	67,014	65,559	94,672
Small Business Administration	79	-1,001	-42	-571
Social Security Administration	83,450	706,133	677,434	953,781
Independent Agencies	-4,412	5,779	518	19,707
Allowances	.....	.....	.....	1,875
Undistributed Offsetting Receipts:				
Interest	-69,213	-133,674	-152,060	-150,911
Other	-36,739	-97,416	-68,102	-135,818
<b>Total Outlays</b>	<b>291,157</b>	<b>2,760,301</b>	<b>2,626,250</b>	<b>3,758,577</b>
<b>(On-Budget)</b>	<b>261,815</b>	<b>2,230,434</b>	<b>2,122,829</b>	<b>3,005,957</b>
<b>(Off-Budget)</b>	<b>29,342</b>	<b>529,867</b>	<b>503,421</b>	<b>752,620</b>
<b>Surplus (+) or Deficit (-)</b>	<b>+51,776</b>	<b>-313,381</b>	<b>-365,865</b>	<b>-582,505</b>
<b>(On-Budget)</b>	<b>+7,492</b>	<b>-372,173</b>	<b>-424,485</b>	<b>-595,455</b>
<b>(Off-Budget)</b>	<b>+44,284</b>	<b>+58,792</b>	<b>+58,620</b>	<b>+12,950</b>

<sup>1</sup> These estimates are based on the FY 2016 Budget, released by the Office of Management and Budget on February 2, 2015

Note: Details may not add to totals due to rounding.  
... No Transactions

**Table 4. Receipts of the U.S. Government, June 2015 and Other Periods**

[\$ millions]

Classification	This Month			Current Fiscal Year to Date			Prior Fiscal Year to Date		
	Gross Receipts	Refunds (Deduct)	Receipts	Gross Receipts	Refunds (Deduct)	Receipts	Gross Receipts	Refunds (Deduct)	Receipts
<b>Individual Income Taxes</b>									
Withheld <sup>1</sup>	92,900			928,312			875,211		
Presidential Election Campaign Fund	1			28			28		
Other	66,230			462,996			392,743		
<b>Total -- Individual Income Taxes</b>	<b>159,131</b>	<b>6,304</b>	<b>152,827</b>	<b>1,391,336</b>	<b>223,836</b>	<b>1,167,500</b>	<b>1,267,982</b>	<b>222,223</b>	<b>1,045,759</b>
<b>Corporation Income Taxes</b>									
	<b>75,825</b>	<b>3,057</b>	<b>72,768</b>	<b>294,674</b>	<b>39,221</b>	<b>255,453</b>	<b>261,732</b>	<b>26,714</b>	<b>235,018</b>
<b>Social Insurance and Retirement Receipts:</b>									
Employment and General Retirement:									
Federal Old-Age and Survivors Insurance Trust Fund:									
Federal Insurance Contributions Act Taxes <sup>1</sup>	56,433	.....	56,433	467,280	.....	467,280	448,030	.....	448,030
Self-Employment Contributions Act Taxes <sup>1</sup>	5,648	.....	5,648	31,595	.....	31,595	30,330	.....	30,330
Adjustments Attributable to Prior Years <sup>1</sup>	858	.....	858	4,335	.....	4,335	2,097	.....	2,097
<b>Total -- Federal Old-Age and Survivors Insurance Trust Fund</b>	<b>62,939</b>	<b>.....</b>	<b>62,939</b>	<b>503,210</b>	<b>.....</b>	<b>503,210</b>	<b>480,457</b>	<b>.....</b>	<b>480,457</b>
Federal Disability Insurance Trust Fund:									
Federal Insurance Contributions Act Taxes <sup>1</sup>	9,582	.....	9,582	79,349	.....	79,349	76,080	.....	76,080
Self-Employment Contributions Act Taxes <sup>1</sup>	959	.....	959	5,366	.....	5,366	5,153	.....	5,153
Adjustments Attributable to Prior Years <sup>1</sup>	146	.....	146	734	.....	734	351	.....	351
<b>Total -- Federal Disability Insurance Trust Fund</b>	<b>10,687</b>	<b>.....</b>	<b>10,687</b>	<b>85,449</b>	<b>.....</b>	<b>85,449</b>	<b>81,584</b>	<b>.....</b>	<b>81,584</b>
Federal Hospital Insurance Trust Fund:									
Federal Insurance Contributions Act Taxes <sup>1</sup>	18,265	.....	18,265	161,936	.....	161,936	154,848	.....	154,848
Self-Employment Contributions Act Taxes <sup>1</sup>	2,976	.....	2,976	14,680	.....	14,680	14,472	.....	14,472
Receipts from Railroad Retirement Board	565	.....	565	565	.....	565	581	.....	581
Adjustments Attributable to Prior Years <sup>1</sup>	32	.....	32	906	.....	906	1,483	.....	1,483
<b>Total -- Federal Hospital Insurance Trust Fund</b>	<b>21,838</b>	<b>.....</b>	<b>21,838</b>	<b>178,087</b>	<b>.....</b>	<b>178,087</b>	<b>171,384</b>	<b>.....</b>	<b>171,384</b>
Railroad Retirement:									
Rail Pension and Supplemental Annuity	310	(**)	310	2,529	1	2,528	2,277	8	2,269
Social Security Equivalent Account	-311	(**)	-311	1,775	1	1,774	1,608	8	1,601
<b>Total -- Employment and General Retirement</b>	<b>95,463</b>	<b>(**)</b>	<b>95,463</b>	<b>771,050</b>	<b>2</b>	<b>771,048</b>	<b>737,310</b>	<b>16</b>	<b>737,295</b>
Unemployment Insurance:									
Deposits by States	370	.....	370	33,974	.....	33,974	36,974	.....	36,974
Federal Unemployment Taxes	49	12	37	8,173	109	8,064	7,713	101	7,612
Railroad Unemployment Taxes	3	.....	3	46	.....	46	27	.....	27
<b>Total -- Unemployment Insurance</b>	<b>421</b>	<b>12</b>	<b>409</b>	<b>42,193</b>	<b>109</b>	<b>42,084</b>	<b>44,714</b>	<b>101</b>	<b>44,613</b>
Other Retirement:									
Federal Employees' Retirement--Employee Share	287	.....	287	2,662	.....	2,662	2,552	.....	2,552
Non-Federal Employees Retirement	2	.....	2	18	.....	18	20	.....	20
<b>Total -- Other Retirement</b>	<b>289</b>	<b>.....</b>	<b>289</b>	<b>2,680</b>	<b>.....</b>	<b>2,680</b>	<b>2,572</b>	<b>.....</b>	<b>2,572</b>
<b>Total -- Social Insurance and Retirement Receipts</b>	<b>96,173</b>	<b>12</b>	<b>96,161</b>	<b>815,923</b>	<b>111</b>	<b>815,812</b>	<b>784,596</b>	<b>117</b>	<b>784,479</b>
<b>Excise Taxes:</b>									
Miscellaneous Excise Taxes	2,793	157	2,637	24,997	2,774	22,223	25,427	3,438	21,990
Airport and Airway Trust Fund	1,194	.....	1,194	9,855	12	9,843	9,219	10	9,209
Highway Trust Fund	3,222	.....	3,222	27,613	.....	27,613	26,413	.....	26,413
Black Lung Disability Trust Fund	47	.....	47	409	.....	409	400	.....	400
<b>Total -- Excise Taxes</b>	<b>7,257</b>	<b>157</b>	<b>7,100</b>	<b>62,873</b>	<b>2,787</b>	<b>60,087</b>	<b>61,460</b>	<b>3,448</b>	<b>58,012</b>
<b>Estate and Gift Taxes</b>									
	<b>1,323</b>	<b>69</b>	<b>1,254</b>	<b>15,713</b>	<b>602</b>	<b>15,112</b>	<b>14,533</b>	<b>599</b>	<b>13,935</b>
<b>Customs Duties</b>									
	<b>3,101</b>	<b>160</b>	<b>2,941</b>	<b>27,550</b>	<b>1,215</b>	<b>26,334</b>	<b>25,702</b>	<b>976</b>	<b>24,725</b>
<b>Miscellaneous Receipts:</b>									
Deposit of Earnings, Federal Reserve System	8,021	.....	8,021	68,831	.....	68,831	74,383	.....	74,383
Universal Service Fund	817	.....	817	7,135	.....	7,135	7,375	.....	7,375
All Other	1,048	3	1,045	30,671	14	30,657	16,729	30	16,699
<b>Total -- Miscellaneous Receipts</b>	<b>9,885</b>	<b>3</b>	<b>9,882</b>	<b>106,636</b>	<b>14</b>	<b>106,622</b>	<b>98,487</b>	<b>30</b>	<b>98,457</b>
<b>Total -- Receipts</b>	<b>352,695</b>	<b>9,762</b>	<b>342,933</b>	<b>2,714,706</b>	<b>267,786</b>	<b>2,446,920</b>	<b>2,514,491</b>	<b>254,106</b>	<b>2,260,385</b>
<b>Total -- On-Budget</b>	<b>279,069</b>	<b>9,762</b>	<b>269,307</b>	<b>2,126,047</b>	<b>267,786</b>	<b>1,858,261</b>	<b>1,952,450</b>	<b>254,106</b>	<b>1,698,344</b>
<b>Total -- Off-Budget</b>	<b>73,626</b>	<b>.....</b>	<b>73,626</b>	<b>588,659</b>	<b>.....</b>	<b>588,659</b>	<b>562,041</b>	<b>.....</b>	<b>562,041</b>

<sup>1</sup> In accordance with the Social Security Act as amended: Individual Income Taxes, Other have been decreased and Federal Insurance Contribution Act Taxes increased by \$491 million to correct estimates for the quarter ended June 2014. Individual Income Taxes, Other have been decreased and Self-Employment Contribution Act Taxes increased by \$545 million to correct estimates for calendar year 2012 and

prior.  
 Note: Details may not add to totals due to rounding.  
 ... No Transactions  
 (\*\*) Less than absolute value of \$500,000

**Table 5. Outlays of the U.S. Government, June 2015 and Other Periods**

[\$ millions]

Classification	This Month			Current Fiscal Year to Date			Prior Fiscal Year to Date		
	Gross Outlays	Applicable Receipts	Outlays	Gross Outlays	Applicable Receipts	Outlays	Gross Outlays	Applicable Receipts	Outlays
<b>Legislative Branch:</b>									
Senate	69	1	68	630	2	628	602	2	600
House of Representatives	108	(**)	108	944	1	943	920	2	918
Joint Items	2	.....	2	12	.....	12	12	.....	12
Capitol Police	26	.....	26	248	.....	248	234	.....	234
Congressional Budget Office	3	.....	3	33	.....	33	31	.....	31
Architect of the Capitol	41	1	40	394	3	391	328	3	325
Library of Congress	46	1	46	427	7	420	417	7	411
Government Printing Office	-4	.....	-4	86	.....	86	91	.....	91
Government Accountability Office	42	.....	42	376	.....	376	365	.....	365
United States Tax Court	4	.....	4	38	.....	38	42	.....	42
Other Legislative Branch Agencies	5	.....	5	39	.....	39	39	.....	39
Proprietary Receipts from the Public	.....	2	-2	.....	10	-10	.....	14	-14
Intrabudgetary Transactions	(**)	.....	(**)	-7	.....	-7	-7	.....	-7
Offsetting Governmental Receipts	.....	.....	.....	.....	(**)	(**)	.....	(**)	(**)
<b>Total--Legislative Branch</b>	<b>342</b>	<b>4</b>	<b>337</b>	<b>3,221</b>	<b>24</b>	<b>3,197</b>	<b>3,076</b>	<b>27</b>	<b>3,049</b>
<b>Judicial Branch:</b>									
Supreme Court of the United States	8	.....	8	63	.....	63	73	.....	73
Courts of Appeals, District Courts, and Other Judicial Services	575	.....	575	5,445	.....	5,445	5,230	.....	5,230
Other	20	.....	20	369	.....	369	352	.....	352
Proprietary Receipts from the Public	.....	3	-3	.....	110	-110	.....	111	-111
Intrabudgetary Transactions	-15	.....	-15	-546	.....	-546	-469	.....	-469
<b>Total--Judicial Branch</b>	<b>588</b>	<b>3</b>	<b>585</b>	<b>5,331</b>	<b>110</b>	<b>5,221</b>	<b>5,186</b>	<b>111</b>	<b>5,074</b>
<b>Department of Agriculture:</b>									
Agricultural Research Service	92	.....	92	822	.....	822	765	.....	765
National Institute of Food and Agriculture:									
Research and Education Activities	85	.....	85	536	.....	536	494	.....	494
Extension Activities	62	.....	62	358	.....	358	303	.....	303
Other	7	.....	7	68	.....	68	76	.....	76
Animal and Plant Health Inspection Service	171	.....	171	952	.....	952	753	.....	753
Food Safety and Inspection Service	73	.....	73	717	.....	717	705	.....	705
Agricultural Marketing Service	63	.....	63	847	.....	847	555	.....	555
Risk Management Agency:									
Administrative and Operating Expenses	7	.....	7	55	.....	55	46	.....	46
Federal Crop Insurance Corporation Fund	108	13	95	8,852	87	8,765	10,016	194	9,822
Farm Service Agency:									
Salaries and Expenses	102	.....	102	916	.....	916	712	.....	712
USDA Supplemental Assistance	2	.....	2	1	.....	1	2	.....	2
Agricultural Disaster Relief Fund	(**)	.....	(**)	1	.....	1	35	.....	35
Commodity Credit Corporation	176	463	-287	11,556	4,331	7,225	15,116	5,584	9,532
Tobacco Trust Fund	5	.....	5	232	.....	232	842	.....	842
Agricultural Credit Insurance Fund	14	6	8	365	81	285	568	104	465
Other	22	.....	22	91	.....	91	37	.....	37
<b>Total--Farm Service Agency</b>	<b>321</b>	<b>469</b>	<b>-148</b>	<b>13,162</b>	<b>4,411</b>	<b>8,751</b>	<b>17,311</b>	<b>5,688</b>	<b>11,623</b>
Natural Resources Conservation Service:									
Conservation Operations	66	.....	66	553	.....	553	579	.....	579
Farm Security and Rural Investment Programs	166	.....	166	2,259	.....	2,259	2,225	.....	2,225
Other	10	.....	10	80	.....	80	97	.....	97
Rural Development	57	.....	57	37	.....	37	-16	.....	-16
Rural Housing Service:									
Rural Housing Insurance Fund	9	44	-35	490	405	85	470	427	43
Rental Assistance Program	98	.....	98	885	.....	885	871	.....	871
Other	12	.....	12	98	.....	98	92	.....	92
Rural Utilities Service:									
Rural Electrification and Telecommunications Fund	16	-40	56	180	522	-342	1,055	2,152	-1,096
Other	97	8	88	734	101	632	731	135	596
Foreign Agricultural Service	63	.....	63	1,060	.....	1,060	1,079	.....	1,079
Food and Nutrition Service:									
Supplemental Nutrition Assistance Program	6,391	.....	6,391	57,209	.....	57,209	57,331	.....	57,331
Child Nutrition Programs	2,125	.....	2,125	17,995	.....	17,995	16,648	.....	16,648
Special Supplemental Nutrition Program for Women, Infants, and Children (WIC)	564	.....	564	4,701	.....	4,701	4,705	.....	4,705
Other	44	.....	44	332	.....	332	250	.....	250
<b>Total--Food and Nutrition Service</b>	<b>9,123</b>	<b>.....</b>	<b>9,123</b>	<b>80,237</b>	<b>.....</b>	<b>80,237</b>	<b>78,934</b>	<b>.....</b>	<b>78,934</b>



**Table 5. Outlays of the U.S. Government, June 2015 and Other Periods - Continued**

Classification	This Month			Current Fiscal Year to Date			Prior Fiscal Year to Date		
	Gross Outlays	Applicable Receipts	Outlays	Gross Outlays	Applicable Receipts	Outlays	Gross Outlays	Applicable Receipts	Outlays
<b>Department of Agriculture: - Continued</b>									
Forest Service:									
National Forest System	124	.....	124	1,127	.....	1,127	1,096	.....	1,096
Capital Improvement and Maintenance	29	.....	29	246	.....	246	240	.....	240
Wildland Fire Management	193	.....	193	1,398	.....	1,398	1,559	.....	1,559
Forest Service Permanent Appropriations	17	.....	17	397	.....	397	400	.....	400
Other	44	.....	44	546	.....	546	550	.....	550
<b>Total--Forest Service</b>	<b>407</b>	<b>.....</b>	<b>407</b>	<b>3,715</b>	<b>.....</b>	<b>3,715</b>	<b>3,845</b>	<b>.....</b>	<b>3,845</b>
Other	235	6	230	616	52	564	651	44	608
Proprietary Receipts from the Public	.....	94	-94	.....	1,303	-1,303	.....	1,111	-1,111
Intrabudgetary Transactions	-188	.....	-188	-129	.....	-129	63	.....	63
<b>Total--Department of Agriculture</b>	<b>11,159</b>	<b>594</b>	<b>10,565</b>	<b>117,184</b>	<b>6,881</b>	<b>110,303</b>	<b>121,700</b>	<b>9,750</b>	<b>111,950</b>
<b>Department of Commerce:</b>									
Economic Development Administration	27	(**)	27	229	5	224	263	1	262
Bureau of the Census	109	.....	109	851	.....	851	753	.....	753
International Trade Administration	48	.....	48	343	.....	343	317	.....	317
National Oceanic and Atmospheric Administration	516	-7	524	4,138	67	4,071	3,932	147	3,785
National Institute of Standards and Technology	76	.....	76	653	.....	653	600	.....	600
National Telecommunications and Information Administration	21	.....	21	186	.....	186	299	.....	299
Other	-10	12	-22	313	116	198	-155	74	-230
Proprietary Receipts from the Public	.....	1	-1	.....	15	-15	.....	7	-7
Intrabudgetary Transactions	-3	.....	-3	8	.....	8	-4	.....	-4
Offsetting Governmental Receipts	.....	(**)	(**)	.....	3	-3	.....	2	-2
<b>Total--Department of Commerce</b>	<b>784</b>	<b>7</b>	<b>778</b>	<b>6,721</b>	<b>207</b>	<b>6,515</b>	<b>6,006</b>	<b>231</b>	<b>5,775</b>
<b>Department of Defense--Military Programs:</b>									
Military Personnel:									
Department of the Army	4,588	.....	4,588	44,465	.....	44,465	46,587	.....	46,587
Department of the Navy	3,681	.....	3,681	34,380	.....	34,380	34,557	.....	34,557
Department of the Air Force	2,721	.....	2,721	25,837	.....	25,837	26,664	.....	26,664
Defense Agencies	.....	.....	.....	6,197	.....	6,197	6,337	.....	6,337
<b>Total--Military Personnel</b>	<b>10,990</b>	<b>.....</b>	<b>10,990</b>	<b>110,879</b>	<b>.....</b>	<b>110,879</b>	<b>114,145</b>	<b>.....</b>	<b>114,145</b>
Operation and Maintenance:									
Department of the Army	5,672	.....	5,672	51,204	.....	51,204	53,020	.....	53,020
Department of the Navy	4,553	.....	4,553	40,155	.....	40,155	39,181	.....	39,181
Department of the Air Force	4,798	.....	4,798	39,622	.....	39,622	37,522	.....	37,522
Defense Agencies	5,739	.....	5,739	51,648	.....	51,648	50,133	.....	50,133
<b>Total--Operation and Maintenance</b>	<b>20,762</b>	<b>.....</b>	<b>20,762</b>	<b>182,628</b>	<b>.....</b>	<b>182,628</b>	<b>179,856</b>	<b>.....</b>	<b>179,856</b>
International Reconstruction and Other Assistance:									
Department of the Army	.....	.....	.....	(**)	.....	(**)	1	.....	1
Procurement:									
Department of the Army	1,981	.....	1,981	14,114	.....	14,114	17,135	.....	17,135
Department of the Navy	3,716	.....	3,716	29,995	.....	29,995	31,602	.....	31,602
Department of the Air Force	2,615	.....	2,615	28,409	.....	28,409	27,938	.....	27,938
Defense Agencies	527	.....	527	4,718	.....	4,718	5,130	.....	5,130
<b>Total--Procurement</b>	<b>8,839</b>	<b>.....</b>	<b>8,839</b>	<b>77,236</b>	<b>.....</b>	<b>77,236</b>	<b>81,805</b>	<b>.....</b>	<b>81,805</b>
Research, Development, Test, and Evaluation:									
Department of the Army	383	.....	383	5,274	.....	5,274	5,733	.....	5,733
Department of the Navy	1,478	.....	1,478	12,074	.....	12,074	11,400	.....	11,400
Department of the Air Force	2,588	.....	2,588	17,588	.....	17,588	17,182	.....	17,182
Defense Agencies	1,575	.....	1,575	12,955	.....	12,955	13,339	.....	13,339
<b>Total--Research, Development, Test, and Evaluation</b>	<b>6,022</b>	<b>.....</b>	<b>6,022</b>	<b>47,891</b>	<b>.....</b>	<b>47,891</b>	<b>47,654</b>	<b>.....</b>	<b>47,654</b>
Military Construction:									
Department of the Army	310	.....	310	1,901	.....	1,901	2,248	.....	2,248
Department of the Navy	119	.....	119	1,265	.....	1,265	1,481	.....	1,481
Department of the Air Force	73	.....	73	659	.....	659	878	.....	878
Defense Agencies	209	.....	209	2,394	.....	2,394	2,599	.....	2,599
<b>Total--Military Construction</b>	<b>711</b>	<b>.....</b>	<b>711</b>	<b>6,218</b>	<b>.....</b>	<b>6,218</b>	<b>7,207</b>	<b>.....</b>	<b>7,207</b>
Family Housing:									
Department of the Army	26	.....	26	307	.....	307	319	.....	319
Department of the Navy	26	.....	26	238	.....	238	258	.....	258
Department of the Air Force	33	.....	33	243	.....	243	308	.....	308
Defense Agencies	4	2	3	56	17	39	105	20	85
Revolving and Management Funds:									



**Table 5. Outlays of the U.S. Government, June 2015 and Other Periods - Continued**

Classification	This Month			Current Fiscal Year to Date			Prior Fiscal Year to Date		
	Gross Outlays	Applicable Receipts	Outlays	Gross Outlays	Applicable Receipts	Outlays	Gross Outlays	Applicable Receipts	Outlays
<b>Department of Defense--Military Programs: - Continued</b>									
Department of the Navy	342	.....	342	641	.....	641	773	.....	773
Defense Agencies:									
Working Capital Fund	-483	.....	-483	-2,153	.....	-2,153	642	.....	642
Other	-17	.....	-17	23	.....	23	166	.....	166
Allowances	(**)	.....	(**)	2	.....	2	47	.....	47
Trust Funds:									
Department of the Army	1	.....	1	4	.....	4	7	.....	7
Department of the Navy	2	.....	2	18	.....	18	18	.....	18
Department of the Air Force	3	.....	3	33	(**)	33	3	(**)	3
Defense Agencies	17	.....	17	145	.....	145	173	.....	173
Proprietary Receipts from the Public:									
Department of the Army	.....	-11	11	.....	247	-247	.....	413	-413
Department of the Navy	.....	13	-13	.....	107	-107	.....	96	-96
Department of the Air Force	.....	62	-62	.....	70	-70	.....	58	-58
Defense Agencies	.....	106	-106	.....	836	-836	.....	1,122	-1,122
Intrabudgetary Transactions:									
Department of the Army	-15	.....	-15	-94	.....	-94	-53	.....	-53
Department of the Navy	-16	.....	-16	-7	.....	-7	-36	.....	-36
Department of the Air Force	24	.....	24	16	.....	16	-13	.....	-13
Defense Agencies	-19	.....	-19	-240	.....	-240	383	.....	383
Offsetting Governmental Receipts:									
Department of the Army	.....	.....	.....	.....	(**)	(**)	.....	1	-1
<b>Total--Department of Defense--Military Programs</b>	<b>47,253</b>	<b>171</b>	<b>47,082</b>	<b>424,085</b>	<b>1,278</b>	<b>422,808</b>	<b>433,769</b>	<b>1,709</b>	<b>432,060</b>
<b>Department of Education:</b>									
Office of Elementary and Secondary Education:									
Accelerating Achievement and Ensuring Equity	1,449	.....	1,449	11,800	.....	11,800	12,235	.....	12,235
Impact Aid	6	.....	6	1,262	.....	1,262	1,086	.....	1,086
Education Improvement Programs	428	.....	428	3,204	.....	3,204	3,354	.....	3,354
State Fiscal Stabilization Fund, Recovery Act	116	.....	116	727	.....	727	1,075	.....	1,075
Other	46	.....	46	290	.....	290	295	.....	295
<b>Total--Office of Elementary and Secondary Education</b>	<b>2,043</b>	<b>.....</b>	<b>2,043</b>	<b>17,283</b>	<b>.....</b>	<b>17,283</b>	<b>18,045</b>	<b>.....</b>	<b>18,045</b>
Office of Innovation and Improvement	155	.....	155	1,054	.....	1,054	881	.....	881
Office of English Language Acquisition	59	.....	59	522	.....	522	567	.....	567
Office of Special Education and Rehabilitative Services:									
Special Education	1,248	.....	1,248	9,658	.....	9,658	10,032	.....	10,032
Rehabilitation Services and Disability Research	281	.....	281	2,556	.....	2,556	2,501	.....	2,501
Special Institutions for Persons with Disabilities	19	.....	19	165	.....	165	159	.....	159
Office of Vocational and Adult Education	213	.....	213	1,269	.....	1,269	1,266	.....	1,266
Office of Postsecondary Education:									
Higher Education	213	.....	213	1,556	.....	1,556	1,644	.....	1,644
Other	(**)	(**)	(**)	162	8	155	171	10	161
<b>Total--Office of Postsecondary Education</b>	<b>213</b>	<b>(**)</b>	<b>213</b>	<b>1,718</b>	<b>8</b>	<b>1,711</b>	<b>1,816</b>	<b>10</b>	<b>1,806</b>
Office of Federal Student Aid:									
Student Financial Assistance	1,191	.....	1,191	21,751	.....	21,751	22,570	.....	22,570
Student Aid Administration	115	.....	115	997	.....	997	965	.....	965
Federal Student Loan Reserve Fund	.....	.....	.....	16	.....	16	166	.....	166
Federal Direct Student Loans	14,354	.....	14,354	14,354	.....	14,354	16,254	.....	16,254
Federal Family Education Loans	1,331	.....	1,331	1,073	.....	1,073	2,069	.....	2,069
Other	(**)	1	-1	9	7	2	12	.....	12
<b>Total--Office of Federal Student Aid</b>	<b>16,990</b>	<b>1</b>	<b>16,990</b>	<b>38,200</b>	<b>7</b>	<b>38,193</b>	<b>42,037</b>	<b>.....</b>	<b>42,037</b>
Institute of Education Sciences	66	.....	66	473	.....	473	472	.....	472
Departmental Management	41	.....	41	417	.....	417	433	.....	433
Other	(**)	.....	(**)	(**)	.....	(**)	1	(**)	1
Proprietary Receipts from the Public	.....	6,737	-6,737	.....	12,929	-12,929	.....	31,280	-31,280
Intrabudgetary Transactions	116	.....	116	40	.....	40	49	.....	49
<b>Total--Department of Education</b>	<b>21,443</b>	<b>6,738</b>	<b>14,706</b>	<b>73,356</b>	<b>12,944</b>	<b>60,413</b>	<b>78,259</b>	<b>31,290</b>	<b>46,969</b>
<b>Department of Energy:</b>									
National Nuclear Security Administration:									
Naval Reactors	100	.....	100	832	.....	832	787	.....	787
Weapons Activities	583	.....	583	5,642	.....	5,642	5,572	.....	5,572
Defense Nuclear Nonproliferation	152	.....	152	1,381	.....	1,381	1,402	.....	1,402
Other	25	.....	25	264	.....	264	281	.....	281

**Table 5. Outlays of the U.S. Government, June 2015 and Other Periods - Continued**

Classification	This Month			Current Fiscal Year to Date			Prior Fiscal Year to Date		
	Gross Outlays	Applicable Receipts	Outlays	Gross Outlays	Applicable Receipts	Outlays	Gross Outlays	Applicable Receipts	Outlays
<b>Department of Energy: - Continued</b>									
Environmental and Other Defense Activities:									
Defense Environmental Cleanup	479	.....	479	4,218	.....	4,218	3,528	.....	3,528
Other Defense Activities	65	.....	65	622	.....	622	536	.....	536
Defense Nuclear Waste Disposal	(**)	.....	(**)	3	.....	3	3	.....	3
Energy Programs:									
Science	388	.....	388	3,616	.....	3,616	3,727	.....	3,727
Energy Supply	110	.....	110	1,081	.....	1,081	1,039	.....	1,039
Energy Efficiency and Renewable Energy	154	.....	154	1,371	.....	1,371	1,549	.....	1,549
Fossil Energy Research and Development	75	.....	75	637	.....	637	621	.....	621
Uranium Enrichment Decontamination and Decommissioning Fund	48	.....	48	448	.....	448	293	.....	293
Advanced Technology Vehicles Manufacturing Loan Program	(**)	.....	(**)	18	.....	18	18	.....	18
Title 17 Innovative Technology Loan Guarantee Program	-2	.....	-2	94	.....	94	176	.....	176
Other	184	7	177	846	43	804	693	49	644
Total--Energy Programs	957	7	951	8,111	43	8,069	8,116	49	8,067
Power Marketing Administration	302	253	50	2,883	2,793	91	3,066	2,961	105
Departmental Administration	22	.....	22	143	.....	143	75	.....	75
Proprietary Receipts from the Public	.....	70	-70	.....	855	-855	.....	1,776	-1,776
Intrabudgetary Transactions	-77	.....	-77	-1,536	.....	-1,536	-1,143	.....	-1,143
<b>Total--Department of Energy</b>	<b>2,608</b>	<b>329</b>	<b>2,279</b>	<b>22,564</b>	<b>3,690</b>	<b>18,874</b>	<b>22,223</b>	<b>4,787</b>	<b>17,436</b>
<b>Department of Health and Human Services:</b>									
Food and Drug Administration	304	(**)	304	2,146	5	2,141	1,703	6	1,697
Health Resources and Services Administration	815	.....	815	6,824	.....	6,824	6,699	6	6,693
Indian Health Service	189	.....	189	3,835	.....	3,835	3,914	.....	3,914
Centers for Disease Control and Prevention	692	.....	692	5,068	.....	5,068	4,542	.....	4,542
National Institutes of Health	2,494	.....	2,494	21,398	.....	21,398	22,425	.....	22,425
Substance Abuse and Mental Health Services Administration	315	.....	315	2,428	.....	2,428	2,480	.....	2,480
Agency for Healthcare Research and Quality	14	.....	14	125	.....	125	59	.....	59
Centers for Medicare and Medicaid Services:									
Grants to States for Medicaid	30,708	.....	30,708	260,303	.....	260,303	218,115	.....	218,115
Payments to Health Care Trust Funds	24,543	.....	24,543	211,282	.....	211,282	200,710	.....	200,710
Children's Health Insurance Fund	735	.....	735	6,665	.....	6,665	7,248	.....	7,248
State Grants and Demonstrations	60	.....	60	417	.....	417	382	.....	382
Federal Hospital Insurance Trust Fund:									
Benefit Payments	21,927	.....	21,927	202,114	.....	202,114	192,406	.....	192,406
Administrative Expenses	330	.....	330	5,690	.....	5,690	6,076	.....	6,076
Total--Federal Hospital Insurance Trust Fund	22,257	.....	22,257	207,803	.....	207,803	198,482	.....	198,482
Health Care Fraud and Abuse Control	133	.....	133	1,181	.....	1,181	1,013	.....	1,013
Federal Supplementary Medical Insurance Trust Fund:									
Benefit Payments	22,575	.....	22,575	199,824	.....	199,824	185,596	.....	185,596
Administrative Expenses	428	.....	428	4,501	.....	4,501	5,058	.....	5,058
Medicare Prescription Drugs:									
Benefit Payments	5,557	.....	5,557	56,415	.....	56,415	47,801	.....	47,801
Administrative Expenses	34	.....	34	357	.....	357	302	.....	302
Total--Federal Supplementary Medical Insurance Trust Fund	28,594	.....	28,594	261,098	.....	261,098	238,757	.....	238,757
Other	195	.....	195	2,132	.....	2,132	2,799	.....	2,799
Total--Centers for Medicare and Medicaid Services	107,225	.....	107,225	950,881	.....	950,881	867,506	.....	867,506
Administration for Children and Families:									
Temporary Assistance for Needy Families	1,620	.....	1,620	11,488	.....	11,488	12,041	.....	12,041
Contingency Fund	56	.....	56	592	.....	592	476	.....	476
Payments to States for Child Support Enforcement and Family Support Programs	279	.....	279	2,421	.....	2,421	2,547	.....	2,547
Low Income Home Energy Assistance	186	.....	186	2,965	.....	2,965	3,069	.....	3,069
Refugee and Entrant Assistance	110	.....	110	913	.....	913	826	.....	826
Child Care Entitlement to States	227	.....	227	2,092	.....	2,092	2,027	.....	2,027
Payments to States for the Child Care and Development Block Grant	172	.....	172	1,571	.....	1,571	1,588	.....	1,588
Social Services Block Grant	125	.....	125	1,363	.....	1,363	1,272	.....	1,272
Children and Families Services Programs	857	.....	857	7,655	.....	7,655	7,084	.....	7,084
Payments to States for Foster Care and Adoption Assistance	592	.....	592	5,498	.....	5,498	5,159	.....	5,159
Other	48	.....	48	401	.....	401	413	.....	413
Total--Administration for Children and Families	4,273	.....	4,273	36,959	.....	36,959	36,501	.....	36,501

**Table 5. Outlays of the U.S. Government, June 2015 and Other Periods - Continued**

Classification	This Month			Current Fiscal Year to Date			Prior Fiscal Year to Date		
	Gross Outlays	Applicable Receipts	Outlays	Gross Outlays	Applicable Receipts	Outlays	Gross Outlays	Applicable Receipts	Outlays
<b>Department of Health and Human Services: - Continued</b>									
Administration for Community Living	137	.....	137	1,243	.....	1,243	1,085	.....	1,085
Departmental Management	221	.....	221	2,094	.....	2,094	2,128	.....	2,128
Other	120	.....	120	534	.....	534	548	.....	548
Proprietary Receipts from the Public	.....	7,192	-7,192	.....	67,361	-67,361	.....	65,596	-65,596
Intrabudgetary Transactions:									
Payments for Health Insurance for the Aged:									
Federal Supplementary Medical Insurance Trust Fund	-20,860	.....	-20,860	-193,651	.....	-193,651	-184,226	.....	-184,226
Payments for Tax and Other Credits:									
Federal Hospital Insurance Trust Fund	-3,686	.....	-3,686	-17,656	.....	-17,656	-16,483	.....	-16,483
Other	-25	.....	-25	-71	.....	-71	937	.....	937
<b>Total--Department of Health and Human Services</b>	<b>92,228</b>	<b>7,192</b>	<b>85,036</b>	<b>822,157</b>	<b>67,367</b>	<b>754,791</b>	<b>749,817</b>	<b>65,608</b>	<b>684,210</b>
<b>Department of Homeland Security:</b>									
Departmental Management and Operations	106	.....	106	744	.....	744	747	.....	747
Citizenship and Immigration Services	259	.....	259	2,328	.....	2,328	2,131	.....	2,131
United States Secret Service	146	.....	146	1,331	.....	1,331	1,312	.....	1,312
Transportation Security Administration	220	.....	220	4,155	.....	4,155	4,239	.....	4,239
Immigration and Customs Enforcement	457	.....	457	4,290	.....	4,290	4,010	.....	4,010
U.S. Customs and Border Protection	978	1	977	9,050	6	9,044	8,619	.....	8,619
United States Coast Guard	899	.....	899	7,810	.....	7,810	7,768	.....	7,768
National Protection and Programs Directorate	164	.....	164	1,027	.....	1,027	966	.....	966
Federal Emergency Management Agency:									
State and Local Programs									
Firefighter Assistance Grants	65	.....	65	479	.....	479	475	.....	475
Disaster Relief	422	.....	422	4,862	.....	4,862	4,288	.....	4,288
National Flood Insurance Fund	82	221	-139	653	1,746	-1,094	758	1,679	-921
Other	209	.....	209	993	.....	993	943	.....	943
<b>Total--Federal Emergency Management Agency</b>	<b>978</b>	<b>221</b>	<b>756</b>	<b>8,693</b>	<b>1,746</b>	<b>6,946</b>	<b>8,455</b>	<b>1,679</b>	<b>6,776</b>
Science and Technology	72	.....	72	567	.....	567	518	.....	518
Domestic Nuclear Detection Office	26	.....	26	223	.....	223	224	.....	224
Other	49	.....	49	306	.....	306	274	.....	274
Proprietary Receipts from the Public	.....	117	-117	.....	525	-525	.....	170	-170
Intrabudgetary Transactions	-7	.....	-7	1	.....	1	-3	.....	-3
Offsetting Governmental Receipts	.....	548	-548	.....	7,215	-7,215	.....	5,986	-5,986
<b>Total--Department of Homeland Security</b>	<b>4,348</b>	<b>888</b>	<b>3,460</b>	<b>40,525</b>	<b>9,492</b>	<b>31,033</b>	<b>39,260</b>	<b>7,835</b>	<b>31,424</b>
<b>Department of Housing and Urban Development:</b>									
Public and Indian Housing Programs:									
Tenant Based Rental Assistance	1,540	.....	1,540	13,695	.....	13,695	13,860	.....	13,860
Housing Certificate Fund	23	.....	23	203	.....	203	266	.....	266
Project-Based Rental Assistance	863	.....	863	7,648	.....	7,648	7,331	.....	7,331
Public Housing Capital Fund	272	.....	272	1,416	.....	1,416	1,553	.....	1,553
Public Housing Operating Fund	371	.....	371	3,280	.....	3,280	3,186	.....	3,186
Revitalization of Severely Distressed Public Housing (Hope VI)	9	.....	9	67	.....	67	76	.....	76
Native American Housing Block Grant	51	.....	51	552	.....	552	561	.....	561
Other	11	.....	11	64	.....	64	41	.....	41
<b>Total--Public and Indian Housing Programs</b>	<b>3,141</b>	<b>.....</b>	<b>3,141</b>	<b>26,924</b>	<b>.....</b>	<b>26,924</b>	<b>26,875</b>	<b>.....</b>	<b>26,875</b>
Community Planning and Development:									
Housing Opportunities for Persons with AIDS	22	.....	22	241	.....	241	238	.....	238
Community Development Fund	516	.....	516	4,801	.....	4,801	4,818	.....	4,818
Home Investment Partnership Program	126	.....	126	893	.....	893	930	.....	930
Neighborhood Stabilization Program	5	.....	5	53	.....	53	274	.....	274
Homeless Assistance Grants	165	.....	165	1,428	.....	1,428	1,418	.....	1,418
Other	6	.....	6	60	(**)	60	72	(**)	72
<b>Total--Community Planning and Development</b>	<b>840</b>	<b>.....</b>	<b>840</b>	<b>7,476</b>	<b>(**)</b>	<b>7,476</b>	<b>7,750</b>	<b>(**)</b>	<b>7,750</b>
Housing Programs:									
Credit Accounts:									
FHA-Mutual Mortgage Insurance Fund, Program Account	9	.....	9	12,978	.....	12,978	5,845	.....	5,845
FHA-Mutual Mortgage Insurance Capital Reserve Account	-1,741	.....	-1,741	-17,524	.....	-17,524	-10,641	.....	-10,641
FHA-Mutual Mortgage and Cooperative Housing Insurance Fund, Liquidating Account	209	209	(**)	234	228	6	17	14	3
FHA-General and Special Risk Fund, Program Account	.....	.....	.....	2,080	.....	2,080	210	.....	210
FHA-General and Special Risk Fund, Liquidating Account	4	28	-24	48	188	-140	31	172	-140

**Table 5. Outlays of the U.S. Government, June 2015 and Other Periods - Continued**

Classification	This Month			Current Fiscal Year to Date			Prior Fiscal Year to Date		
	Gross Outlays	Applicable Receipts	Outlays	Gross Outlays	Applicable Receipts	Outlays	Gross Outlays	Applicable Receipts	Outlays
<b>Department of Housing and Urban Development: - Continued</b>									
Housing for the Elderly or Handicapped Fund:									
Liquidating Account	(**)	43	-43	2	398	-397	(**)	354	-354
Housing for the Elderly	69	.....	69	580	.....	580	669	.....	669
Housing for Persons with Disabilities	15	.....	15	142	.....	142	171	.....	171
Other Assisted Housing Programs	20	.....	20	198	.....	198	248	.....	248
Other	4	3	1	47	36	11	58	31	26
<b>Total--Housing Programs</b>	<b>-1,410</b>	<b>283</b>	<b>-1,693</b>	<b>-1,215</b>	<b>851</b>	<b>-2,065</b>	<b>-3,392</b>	<b>572</b>	<b>-3,964</b>
Government National Mortgage Association:									
Guarantees of Mortgage-Backed Securities	4	(**)	4	31	1	31	27	51	-24
Management and Administration	137	.....	137	1,294	.....	1,294	1,280	.....	1,280
Other	16	.....	16	142	.....	142	181	.....	181
Proprietary Receipts from the Public:									
FHA-General and Special Risk Fund	.....	73	-73	.....	2,652	-2,652	.....	2,507	-2,507
Other	.....	1	-1	.....	13	-13	.....	37	-37
Intrabudgetary Transactions	-207	.....	-207	-212	.....	-212	-7	.....	-7
Offsetting Governmental Receipts	.....	1	-1	.....	8	-8	.....	3	-3
<b>Total--Department of Housing and Urban Development</b>	<b>2,521</b>	<b>358</b>	<b>2,162</b>	<b>34,441</b>	<b>3,524</b>	<b>30,917</b>	<b>32,713</b>	<b>3,170</b>	<b>29,543</b>
<b>Department of the Interior:</b>									
Land and Minerals Management:									
Bureau of Land Management:									
Management of Lands and Resources	79	.....	79	692	.....	692	714	.....	714
Other	20	6	14	317	36	281	346	99	247
Bureau of Ocean Energy Management	-4	.....	-4	46	.....	46	28	.....	28
Office of Surface Mining Reclamation and Enforcement	46	.....	46	538	.....	538	442	.....	442
<b>Total--Land and Minerals Management</b>	<b>141</b>	<b>6</b>	<b>135</b>	<b>1,593</b>	<b>36</b>	<b>1,557</b>	<b>1,530</b>	<b>99</b>	<b>1,431</b>
Water and Science:									
Bureau of Reclamation:									
Water and Related Resources	67	.....	67	530	.....	530	575	.....	575
Other	20	22	-2	409	256	152	767	215	552
Central Utah Project	1	.....	1	11	.....	11	12	.....	12
United States Geological Survey	92	.....	92	773	.....	773	805	.....	805
<b>Total--Water and Science</b>	<b>181</b>	<b>22</b>	<b>159</b>	<b>1,722</b>	<b>256</b>	<b>1,466</b>	<b>2,158</b>	<b>215</b>	<b>1,943</b>
Fish and Wildlife and Parks:									
United States Fish and Wildlife Service	234	.....	234	1,988	.....	1,988	1,983	.....	1,983
National Park Service	243	.....	243	2,183	.....	2,183	2,049	.....	2,049
<b>Total--Fish and Wildlife and Parks</b>	<b>477</b>	<b>.....</b>	<b>477</b>	<b>4,170</b>	<b>.....</b>	<b>4,170</b>	<b>4,031</b>	<b>.....</b>	<b>4,031</b>
Bureau of Indian Affairs and Bureau of Indian Education	96	(**)	96	1,930	1	1,930	1,760	(**)	1,759
Departmental Offices:									
Mineral Leasing and Associated Payments	97	.....	97	1,423	.....	1,423	1,599	.....	1,599
Other	125	.....	125	666	.....	666	326	.....	326
Insular Affairs	21	.....	21	267	.....	267	291	.....	291
Office of the Special Trustee for American Indians	17	.....	17	243	.....	243	142	.....	142
Department-Wide Programs	467	.....	467	1,024	.....	1,024	948	.....	948
Other	18	.....	18	140	.....	140	124	.....	124
Proprietary Receipts from the Public	.....	326	-326	.....	3,877	-3,877	.....	4,136	-4,136
Intrabudgetary Transactions	35	.....	35	-110	.....	-110	-86	.....	-86
<b>Total--Department of the Interior</b>	<b>1,673</b>	<b>354</b>	<b>1,319</b>	<b>13,070</b>	<b>4,170</b>	<b>8,899</b>	<b>12,824</b>	<b>4,451</b>	<b>8,373</b>
<b>Department of Justice:</b>									
General Administration	-8	.....	-8	271	.....	271	277	.....	277
Legal Activities and U.S. Marshals:									
General Legal Activities	94	.....	94	676	.....	676	604	.....	604
United States Attorneys	169	.....	169	1,463	.....	1,463	1,343	.....	1,343
United States Marshals Service	132	.....	132	882	.....	882	835	.....	835
Assets Forfeiture Fund	115	.....	115	2,094	.....	2,094	997	.....	997
Other	181	.....	181	348	.....	348	1,410	.....	1,410
Federal Bureau of Investigation	696	.....	696	5,970	.....	5,970	5,535	.....	5,535
Drug Enforcement Administration	194	.....	194	1,728	.....	1,728	1,670	.....	1,670
Bureau of Alcohol, Tobacco, Firearms, and Explosives	104	.....	104	883	.....	883	802	.....	802
Federal Prison System	594	30	563	5,500	280	5,219	5,224	282	4,943
Office of Justice Programs:									
State and Local Law Enforcement Assistance	73	.....	73	813	.....	813	941	.....	941
Community Oriented Policing Services	12	.....	12	183	.....	183	240	.....	240

**Table 5. Outlays of the U.S. Government, June 2015 and Other Periods - Continued**

Classification	This Month			Current Fiscal Year to Date			Prior Fiscal Year to Date		
	Gross Outlays	Applicable Receipts	Outlays	Gross Outlays	Applicable Receipts	Outlays	Gross Outlays	Applicable Receipts	Outlays
<b>Department of Justice: - Continued</b>									
Crime Victims Fund	76	.....	76	503	.....	503	521	.....	521
Other	37	.....	37	627	.....	627	671	.....	671
Other	20	.....	20	583	.....	583	576	.....	576
Proprietary Receipts from the Public	.....	130	-130	.....	1,619	-1,619	.....	317	-317
Intrabudgetary Transactions	-398	.....	-398	-1,136	.....	-1,136	269	.....	269
Offsetting Governmental Receipts	.....	48	-48	.....	388	-388	.....	394	-394
<b>Total--Department of Justice</b>	<b>2,091</b>	<b>209</b>	<b>1,882</b>	<b>21,387</b>	<b>2,288</b>	<b>19,099</b>	<b>21,916</b>	<b>993</b>	<b>20,924</b>
<b>Department of Labor:</b>									
Employment and Training Administration:									
Training and Employment Services	302	.....	302	2,339	.....	2,339	2,320	.....	2,320
Office of Job Corps	119	.....	119	1,219	.....	1,219	1,182	.....	1,182
Community Service Employment for Older Americans	43	.....	43	325	.....	325	309	.....	309
Federal Unemployment Benefits and Allowances	36	.....	36	377	.....	377	399	.....	399
Federal Additional Unemployment Compensation									
Program-Recovery Act	-4	.....	-4	-9	.....	-9	-9	.....	-9
State Unemployment Insurance and Employment Service									
Operations	41	.....	41	-31	.....	-31	345	.....	345
Payments to the Unemployment Trust Fund	.....	.....	.....	61	.....	61	5,028	.....	5,028
Advances to the Unemployment Trust Fund and Other Funds	.....	.....	.....	.....	.....	.....	610	.....	610
Program Administration	7	.....	7	77	.....	77	70	.....	70
Unemployment Trust Fund:									
Federal-State Unemployment Insurance:									
State Unemployment Benefits	2,509	.....	2,509	24,938	.....	24,938	34,120	.....	34,120
State Administrative Expenses	285	.....	285	2,924	.....	2,924	2,768	.....	2,768
Federal Administrative Expenses	18	.....	18	373	.....	373	351	.....	351
Other	72	.....	72	167	.....	167	203	.....	203
<b>Total--Unemployment Trust Fund</b>	<b>2,885</b>	<b>.....</b>	<b>2,885</b>	<b>28,402</b>	<b>.....</b>	<b>28,402</b>	<b>37,442</b>	<b>.....</b>	<b>37,442</b>
Other	39	.....	39	364	.....	364	-177	.....	-177
<b>Total--Employment and Training Administration</b>	<b>3,467</b>	<b>.....</b>	<b>3,467</b>	<b>33,125</b>	<b>.....</b>	<b>33,125</b>	<b>47,518</b>	<b>.....</b>	<b>47,518</b>
Pension Benefit Guaranty Corporation	505	609	-103	4,560	5,333	-773	4,483	4,239	245
Employment Standards Administration	(**)	.....	(**)	(**)	.....	(**)	-2	.....	-2
Office of Workers' Compensation Programs:									
Special Benefits	271	.....	271	-461	.....	-461	-588	.....	-588
Energy Employees Occupational Illness Compensation Fund	71	.....	71	758	.....	758	785	.....	785
Special Benefits for Disabled Coal Miners	10	.....	10	89	.....	89	98	.....	98
Black Lung Disability Trust Fund	19	.....	19	207	.....	207	167	.....	167
Other	24	.....	24	266	.....	266	260	.....	260
Wage and Hour Division	18	.....	18	203	.....	203	196	.....	196
Occupational Safety and Health Administration	40	.....	40	415	.....	415	395	.....	395
Mine Safety and Health Administration	27	.....	27	280	.....	280	260	.....	260
Bureau of Labor Statistics	41	.....	41	396	.....	396	380	.....	380
Departmental Management	75	.....	75	297	.....	297	334	.....	334
Other	22	.....	22	237	.....	237	227	.....	227
Proprietary Receipts from the Public	.....	(**)	(**)	.....	-2	2	.....	7	-7
Intrabudgetary Transactions	-133	.....	-133	-677	.....	-677	-5,926	.....	-5,926
<b>Total--Department of Labor</b>	<b>4,457</b>	<b>609</b>	<b>3,848</b>	<b>39,695</b>	<b>5,331</b>	<b>34,364</b>	<b>48,587</b>	<b>4,245</b>	<b>44,342</b>
<b>Department of State:</b>									
Administration of Foreign Affairs:									
Diplomatic and Consular Programs	361	.....	361	5,763	.....	5,763	6,313	.....	6,313
Educational and Cultural Exchange Programs	53	.....	53	450	.....	450	422	.....	422
Embassy Security, Construction, and Maintenance	199	.....	199	912	.....	912	1,241	.....	1,241
Payment to Foreign Service Retirement and Disability Fund									
Fund	79	.....	79	119	.....	119	159	.....	159
Foreign Service Retirement and Disability Fund	77	.....	77	693	.....	693	687	.....	687
Other	102	.....	102	181	.....	181	-52	.....	-52
<b>Total--Administration of Foreign Affairs</b>	<b>871</b>	<b>.....</b>	<b>871</b>	<b>8,118</b>	<b>.....</b>	<b>8,118</b>	<b>8,770</b>	<b>.....</b>	<b>8,770</b>
International Organizations and Conferences	88	.....	88	1,402	.....	1,402	1,558	.....	1,558
Global Health and Child Survival	574	.....	574	5,316	.....	5,316	5,664	.....	5,664
Migration and Refugee Assistance	354	.....	354	1,972	.....	1,972	2,087	.....	2,087
International Narcotics Control and Law Enforcement	121	.....	121	892	.....	892	926	.....	926
Andean Counterdrug Programs	1	.....	1	11	.....	11	26	.....	26
Other	36	.....	36	329	.....	329	310	.....	310
Proprietary Receipts from the Public	.....	6	-6	.....	52	-52	.....	56	-56
Intrabudgetary Transactions	-79	.....	-79	-232	.....	-232	-270	.....	-270
<b>Total--Department of State</b>	<b>1,966</b>	<b>6</b>	<b>1,960</b>	<b>17,808</b>	<b>52</b>	<b>17,756</b>	<b>19,071</b>	<b>56</b>	<b>19,015</b>

**Table 5. Outlays of the U.S. Government, June 2015 and Other Periods - Continued**

Classification	This Month			Current Fiscal Year to Date			Prior Fiscal Year to Date		
	Gross Outlays	Applicable Receipts	Outlays	Gross Outlays	Applicable Receipts	Outlays	Gross Outlays	Applicable Receipts	Outlays
<b>Department of Transportation:</b>									
Office of the Secretary	107	.....	107	601	.....	601	520	.....	520
Federal Aviation Administration:									
Operations	-736	.....	-736	1,404	.....	1,404	1,793	.....	1,793
Airport and Airway Trust Fund:									
Grants-In-Aid for Airports	242	.....	242	2,253	.....	2,253	2,299	.....	2,299
Facilities and Equipment	230	.....	230	1,888	.....	1,888	2,003	.....	2,003
Research, Engineering, and Development	11	.....	11	110	.....	110	97	.....	97
Trust Fund Share of FAA Operations	1,500	.....	1,500	5,700	.....	5,700	5,300	.....	5,300
Total--Airport and Airway Trust Fund	1,982	.....	1,982	9,951	.....	9,951	9,700	.....	9,700
Other	14	2	13	1	-18	20	-48	178	-225
Total--Federal Aviation Administration	1,260	2	1,259	11,356	-18	11,374	11,445	178	11,268
Federal Highway Administration:									
Highway Trust Fund:									
Federal-Aid Highways	3,900	.....	3,900	27,035	.....	27,035	28,654	.....	28,654
Other	1	.....	1	5	.....	5	7	3	4
Highway Infrastructure Investment, Recovery Act	4	.....	4	61	.....	61	133	.....	133
Other Programs	216	.....	216	657	.....	657	12,405	.....	12,405
Total--Federal Highway Administration	4,122	.....	4,122	27,758	.....	27,758	41,199	3	41,196
Federal Motor Carrier Safety Administration	36	.....	36	388	.....	388	402	.....	402
National Highway Traffic Safety Administration	81	.....	81	660	.....	660	640	.....	640
Federal Railroad Administration:									
Operating Subsidy Grants to the National Railroad Passenger Corporation									
	63	.....	63	250	.....	250	270	.....	270
Capital and Debt Service Grants to the National Railroad Passenger Corporation									
	(**)	.....	(**)	655	.....	655	631	.....	631
Capital Assistance for High Speed Rail Corridors and Intercity Passenger Rail Service									
	143	.....	143	675	.....	675	744	.....	744
Other	44	.....	44	333	.....	333	370	(**)	370
Total--Federal Railroad Administration	249	.....	249	1,912	.....	1,912	2,015	(**)	2,015
Federal Transit Administration:									
Formula Grants	3	.....	3	31	.....	31	87	.....	87
Capital Investment Grants	129	.....	129	1,535	.....	1,535	1,316	.....	1,316
Transit Formula Grants	822	.....	822	6,016	.....	6,016	6,494	.....	6,494
Transit Capital Assistance, Recovery Act	4	.....	4	81	.....	81	129	.....	129
Other	65	.....	65	446	.....	446	584	.....	584
Total--Federal Transit Administration	1,024	.....	1,024	8,108	.....	8,108	8,609	.....	8,609
Maritime Administration	-128	(**)	-128	224	8	216	224	7	217
Other	48	3	45	315	24	291	311	21	290
Proprietary Receipts from the Public	.....	191	-191	.....	263	-263	.....	61	-61
Intrabudgetary Transactions:									
Payment from the General Fund, Highway Trust Fund									
	.....	.....	.....	.....	.....	.....	-11,693	.....	-11,693
Other	(**)	.....	(**)	(**)	.....	(**)	-1	.....	-1
Offsetting Governmental Receipts	.....	1	-1	.....	121	-121	.....	99	-99
<b>Total--Department of Transportation</b>	<b>6,798</b>	<b>197</b>	<b>6,601</b>	<b>51,321</b>	<b>398</b>	<b>50,923</b>	<b>53,672</b>	<b>369</b>	<b>53,303</b>
<b>Department of the Treasury:</b>									
Departmental Offices:									
Exchange Stabilization Fund	.....	-1	1	9	42	-33	.....	83	-83
Grants for Specified Energy Property in Lieu of Tax									
Credit	65	.....	65	1,600	.....	1,600	2,754	.....	2,754
Housing and Economic Recovery Programs	.....	.....	.....	176	.....	176	4	.....	4
Troubled Asset Relief Program	263	.....	263	2,742	.....	2,742	3,378	.....	3,378
Other	126	.....	126	1,263	.....	1,263	1,520	.....	1,520
Bureau of the Fiscal Service:									
Financial Management Service:									
Payment to the Resolution Funding Corporation									
	.....	.....	.....	1,976	.....	1,976	1,976	.....	1,976
Financial Agent Services	49	.....	49	470	.....	470	436	.....	436
Interest Paid to Credit Financing Accounts	.....	.....	.....	.....	.....	.....	1	.....	1
Claims, Judgments, and Relief Acts	280	.....	280	2,400	.....	2,400	1,473	.....	1,473
Other	129	2	126	570	8	561	1,676	4	1,673
Total--Financial Management Service	458	2	456	5,416	8	5,407	5,562	4	5,559
Bureau of the Public Debt	71	.....	71	613	.....	613	404	.....	404
Total--Bureau of the Fiscal Service	528	2	526	6,029	8	6,020	5,967	4	5,963



**Table 5. Outlays of the U.S. Government, June 2015 and Other Periods - Continued**

Classification	This Month			Current Fiscal Year to Date			Prior Fiscal Year to Date		
	Gross Outlays	Applicable Receipts	Outlays	Gross Outlays	Applicable Receipts	Outlays	Gross Outlays	Applicable Receipts	Outlays
<b>Department of the Treasury: - Continued</b>									
Federal Financing Bank	-183	.....	-183	-923	.....	-923	-689	.....	-689
Alcohol and Tobacco Tax and Trade Bureau:									
Salaries and Expenses	7	.....	7	71	.....	71	68	.....	68
Internal Revenue Collections for Puerto Rico	32	.....	32	258	.....	258	235	.....	235
Bureau of Engraving and Printing	-4	.....	-4	-39	.....	-39	-42	.....	-42
United States Mint	252	406	-154	2,182	2,756	-574	2,343	2,641	-298
Internal Revenue Service:									
Taxpayer Services	161	.....	161	1,654	.....	1,654	1,750	.....	1,750
Enforcement	372	.....	372	3,515	.....	3,515	3,560	.....	3,560
Operations Support	295	.....	295	3,013	.....	3,013	3,018	.....	3,018
Build America Bond Payments, Recovery Act	270	.....	270	2,966	.....	2,966	2,956	.....	2,956
Refundable Premium Tax Credits and Cost Sharing Reductions	3,169	.....	3,169	19,130	.....	19,130	6,894	.....	6,894
Payment Where Earned Income Credit Exceeds Liability for Tax	152	.....	152	59,429	.....	59,429	59,424	.....	59,424
Payment Where Child Tax Credit Exceeds Liability for Tax	86	.....	86	20,316	.....	20,316	21,215	.....	21,215
Payment Where American Opportunity Tax Credit Exceeds Liability for Tax	4	.....	4	4,096	.....	4,096	4,190	.....	4,190
Refunding Internal Revenue Collections, Interest	89	.....	89	791	.....	791	777	.....	777
Other	149	.....	149	1,033	(**)	1,033	1,057	1	1,056
Total--Internal Revenue Service	4,746	.....	4,746	115,942	(**)	115,942	104,841	1	104,841
Comptroller of the Currency	76	4	72	740	1,027	-286	739	522	217
Interest on the Public Debt:									
Interest on Treasury Debt Securities (Gross):									
Public Issues (Accrual Basis)	22,384	.....	22,384	176,539	.....	176,539	190,064	.....	190,064
Special Issues (Cash Basis)	70,630	.....	70,630	141,686	.....	141,686	163,555	.....	163,555
Total--Interest on Treasury Debt Securities (Gross)	93,014	.....	93,014	318,225	.....	318,225	353,620	.....	353,620
Total--Interest on the Public Debt	93,014	.....	93,014	318,225	.....	318,225	353,620	.....	353,620
Other	9	.....	9	71	.....	71	68	.....	68
Proprietary Receipts from the Public	.....	3,288	-3,288	.....	16,761	-16,761	.....	77,172	-77,172
Intrabudgetary Transactions	-295	.....	-295	-1,678	.....	-1,678	-2,565	.....	-2,565
<b>Total--Department of the Treasury</b>	<b>98,636</b>	<b>3,699</b>	<b>94,937</b>	<b>446,670</b>	<b>20,595</b>	<b>426,075</b>	<b>472,239</b>	<b>80,422</b>	<b>391,817</b>
<b>Department of Veterans Affairs:</b>									
Joint DOD-VA Medical Facility Demonstration Fund	31	.....	31	280	.....	280	264	.....	264
Veterans Health Administration:									
Veterans Choice Fund, Veterans Health Administration	2	.....	2	86	.....	86	.....	.....	.....
Medical Services	4,167	.....	4,167	37,026	.....	37,026	33,520	.....	33,520
Medical Support and Compliance	454	.....	454	4,340	.....	4,340	4,169	.....	4,169
Medical Facilities	389	.....	389	3,686	.....	3,686	3,842	.....	3,842
Other	81	36	46	874	331	543	807	311	496
Benefits Programs:									
Public Enterprise Funds:									
Housing Accounts	(**)	1	-1	3	14	-10	3	16	-12
Other	78	74	4	725	684	41	713	692	21
Compensation and Pensions	6,408	.....	6,408	55,906	.....	55,906	51,872	.....	51,872
Readjustment Benefits	877	.....	877	10,251	.....	10,251	10,282	.....	10,282
Veterans Housing Benefit Program Fund	41	.....	41	837	.....	837	2,118	.....	2,118
Insurance Funds:									
National Service Life	79	.....	79	766	.....	766	710	.....	710
Veterans Special Life	15	47	-32	133	106	27	126	115	11
Other	5	.....	5	45	.....	45	49	.....	49
Total--Benefits Programs	7,505	122	7,383	68,665	803	67,862	65,873	822	65,050
Departmental Administration:									
Construction	117	.....	117	1,287	.....	1,287	951	.....	951
Information Technology Systems	299	.....	299	2,852	.....	2,852	2,566	.....	2,566
General Operating Expenses	259	.....	259	1,856	(**)	1,856	1,717	1	1,717
Other	81	.....	81	866	.....	866	810	.....	810
Proprietary Receipts from the Public:									
National Service Life	.....	12	-12	.....	64	-64	.....	22	-22
Other	.....	321	-321	.....	2,974	-2,974	.....	2,466	-2,466
Intrabudgetary Transactions	5	.....	5	1	.....	1	-13	.....	-13
<b>Total--Department of Veterans Affairs</b>	<b>13,388</b>	<b>491</b>	<b>12,897</b>	<b>121,819</b>	<b>4,172</b>	<b>117,647</b>	<b>114,506</b>	<b>3,623</b>	<b>110,884</b>



**Table 5. Outlays of the U.S. Government, June 2015 and Other Periods - Continued**

Classification	This Month			Current Fiscal Year to Date			Prior Fiscal Year to Date		
	Gross Outlays	Applicable Receipts	Outlays	Gross Outlays	Applicable Receipts	Outlays	Gross Outlays	Applicable Receipts	Outlays
<b>Corps of Engineers:</b>									
Construction	207	.....	207	1,561	.....	1,561	1,444	.....	1,444
Operation and Maintenance	193	.....	193	1,436	.....	1,436	1,228	.....	1,228
Flood Control and Coastal Emergencies	43	.....	43	500	.....	500	639	.....	639
Harbor Maintenance Trust Fund	92	.....	92	831	.....	831	734	.....	734
Rivers and Harbors Contributed Funds	28	.....	28	291	.....	291	278	.....	278
Other	7	.....	7	980	.....	980	891	.....	891
Proprietary Receipts from the Public	.....	38	-38	.....	642	-642	.....	340	-340
Intrabudgetary Transactions	1	.....	1	(**)	.....	(**)	(**)	.....	(**)
<b>Total--Corps of Engineers</b>	<b>572</b>	<b>38</b>	<b>533</b>	<b>5,600</b>	<b>642</b>	<b>4,958</b>	<b>5,215</b>	<b>340</b>	<b>4,875</b>
<b>Other Defense Civil Programs:</b>									
Military Retirement:									
Payment to Military Retirement Fund	.....	.....	.....	75,562	.....	75,562	72,885	.....	72,885
Military Retirement Fund	4,737	.....	4,737	42,489	.....	42,489	41,492	.....	41,492
Retiree Health Care:									
Payment to Department of Defense Medicare-Eligible Retiree Health Care Fund									
.....	.....	.....	.....	4,005	.....	4,005	4,250	.....	4,250
Department of Defense Medicare-Eligible Retiree Health Care Fund									
.....	.....	.....	.....	4,005	.....	4,005	4,250	.....	4,250
Department of Defense Medicare-Eligible Retiree Health Care Fund	681	.....	681	7,638	.....	7,638	6,998	.....	6,998
Educational Benefits	17	.....	17	281	.....	281	300	.....	300
Other	23	.....	23	182	.....	182	158	.....	158
Proprietary Receipts from the Public	.....	2	-2	.....	15	-15	.....	10	-10
Intrabudgetary Transactions	-453	.....	-453	-81,076	.....	-81,076	-82,876	.....	-82,876
<b>Total--Other Defense Civil Programs</b>	<b>5,004</b>	<b>2</b>	<b>5,002</b>	<b>49,081</b>	<b>15</b>	<b>49,066</b>	<b>43,207</b>	<b>10</b>	<b>43,197</b>
<b>Environmental Protection Agency:</b>									
Science and Technology	57	.....	57	551	.....	551	572	.....	572
Environmental Programs and Management	211	.....	211	1,880	.....	1,880	1,962	.....	1,962
State and Tribal Assistance Grants	347	.....	347	3,358	.....	3,358	3,251	.....	3,251
Payment to the Hazardous Substance Superfund	.....	.....	.....	981	.....	981	938	.....	938
Hazardous Substance Superfund	94	.....	94	-771	.....	-771	583	.....	583
Other	30	(**)	30	134	29	105	130	29	101
Proprietary Receipts from the Public	.....	5	-5	.....	275	-275	.....	82	-82
Intrabudgetary Transactions	-6	.....	-6	-947	.....	-947	-927	.....	-927
Offsetting Governmental Receipts	.....	2	-2	.....	22	-22	.....	19	-19
<b>Total--Environmental Protection Agency</b>	<b>733</b>	<b>7</b>	<b>726</b>	<b>5,186</b>	<b>326</b>	<b>4,860</b>	<b>6,509</b>	<b>130</b>	<b>6,378</b>
<b>Executive Office of the President:</b>									
The White House	4	.....	4	41	.....	41	39	.....	39
Office of Management and Budget	7	.....	7	65	.....	65	62	.....	62
Unanticipated Needs	11,501	.....	11,501	9	.....	9	10	.....	10
Other	19	.....	19	173	.....	173	159	.....	159
Proprietary Receipts from the Public	.....	(**)	(**)	.....	(**)	(**)	.....	(**)	(**)
Intrabudgetary Transactions	.....	.....	.....	(**)	.....	(**)	(**)	.....	(**)
<b>Total--Executive Office of the President</b>	<b>11,531</b>	<b>(**)</b>	<b>11,531</b>	<b>289</b>	<b>(**)</b>	<b>289</b>	<b>270</b>	<b>(**)</b>	<b>270</b>
<b>General Services Administration:</b>									
Real Property Activities	-218	.....	-218	-768	.....	-768	-629	.....	-629
Supply and Technology Activities	227	.....	227	19	.....	19	468	.....	468
General Activities	-19	.....	-19	120	.....	120	62	.....	62
Proprietary Receipts from the Public	.....	33	-33	.....	125	-125	.....	155	-155
Intrabudgetary Transactions	1	.....	1	-2	.....	-2	-6	.....	-6
<b>Total--General Services Administration</b>	<b>-8</b>	<b>33</b>	<b>-41</b>	<b>-631</b>	<b>125</b>	<b>-757</b>	<b>-105</b>	<b>155</b>	<b>-260</b>
<b>International Assistance Programs:</b>									
Millennium Challenge Corporation	71	.....	71	525	.....	525	844	.....	844
International Security Assistance:									
Pakistan Counterinsurgency Capability Fund									
.....	.....	.....	.....	.....	.....	.....	425	.....	425
Foreign Military Financing Program	124	.....	124	4,901	.....	4,901	5,054	.....	5,054
Economic Support Fund	383	.....	383	3,859	.....	3,859	3,129	.....	3,129
Other	138	1	137	748	22	726	847	74	773
<b>Total--International Security Assistance</b>	<b>645</b>	<b>1</b>	<b>644</b>	<b>9,508</b>	<b>22</b>	<b>9,486</b>	<b>9,455</b>	<b>74</b>	<b>9,381</b>
Multilateral Assistance:									
Contribution to the International Development Association									
.....	.....	.....	.....	1,288	.....	1,288	1,360	.....	1,360
Other	2	.....	2	1,857	.....	1,857	956	.....	956
<b>Total--Multilateral Assistance</b>	<b>2</b>	<b>.....</b>	<b>2</b>	<b>3,145</b>	<b>.....</b>	<b>3,145</b>	<b>2,316</b>	<b>.....</b>	<b>2,316</b>

**Table 5. Outlays of the U.S. Government, June 2015 and Other Periods - Continued**

Classification	This Month			Current Fiscal Year to Date			Prior Fiscal Year to Date		
	Gross Outlays	Applicable Receipts	Outlays	Gross Outlays	Applicable Receipts	Outlays	Gross Outlays	Applicable Receipts	Outlays
<b>International Assistance Programs: - Continued</b>									
Agency for International Development:									
Development Assistance Program	186	.....	186	1,881	.....	1,881	1,610	.....	1,610
Assistance for Europe, Eurasia and Central Asia	11	.....	11	116	.....	116	298	.....	298
International Disaster Assistance	152	.....	152	1,870	.....	1,870	1,115	.....	1,115
Operating Expenses	28	.....	28	837	.....	837	899	.....	899
Other	485	.....	485	506	.....	506	53	(**)	53
Proprietary Receipts from the Public	.....	1	-1	.....	3	-3	.....	2	-2
Intrabudgetary Transactions	5	.....	5	12	.....	12	27	.....	27
<b>Total--Agency for International Development</b>	<b>866</b>	<b>1</b>	<b>865</b>	<b>5,221</b>	<b>3</b>	<b>5,218</b>	<b>4,002</b>	<b>2</b>	<b>4,000</b>
Overseas Private Investment Corporation:									
Overseas Private Investment Corporation Accounts	7	9	-2	64	133	-69	60	137	-77
Proprietary Receipts from the Public	.....	18	-18	.....	94	-94	.....	113	-113
<b>Total--Overseas Private Investment Corporation</b>	<b>7</b>	<b>27</b>	<b>-20</b>	<b>64</b>	<b>227</b>	<b>-163</b>	<b>60</b>	<b>250</b>	<b>-190</b>
Peace Corps	20	(**)	20	280	3	277	264	1	263
International Monetary Programs	-108	.....	-108	976	.....	976	-130	1	-131
Military Sales Program:									
Foreign Military Sales Trust Fund	3,446	.....	3,446	20,291	.....	20,291	19,906	.....	19,906
Other	4	.....	4	49	32	17	37	42	-4
Proprietary Receipts from the Public	.....	3,671	-3,671	.....	21,862	-21,862	.....	21,397	-21,397
Other	8	(**)	8	79	1	78	72	1	71
<b>Total--International Assistance Programs</b>	<b>4,961</b>	<b>3,699</b>	<b>1,261</b>	<b>40,138</b>	<b>22,149</b>	<b>17,988</b>	<b>36,827</b>	<b>21,768</b>	<b>15,059</b>
<b>National Aeronautics and Space Administration:</b>									
Science	475	.....	475	3,804	.....	3,804	3,588	.....	3,588
Aeronautics	52	.....	52	421	.....	421	401	.....	401
Exploration	568	.....	568	3,628	.....	3,628	2,748	.....	2,748
Cross Agency Support	258	.....	258	2,071	.....	2,071	2,030	.....	2,030
Space Operations	487	.....	487	2,766	.....	2,766	2,876	.....	2,876
Other	97	.....	97	876	.....	876	841	.....	841
Proprietary Receipts from the Public	.....	(**)	(**)	.....	1	-1	.....	3	-3
Intrabudgetary Transactions	(**)	.....	(**)	-1	.....	-1	-1	.....	-1
<b>Total--National Aeronautics and Space Administration</b>	<b>1,937</b>	<b>(**)</b>	<b>1,937</b>	<b>13,565</b>	<b>1</b>	<b>13,564</b>	<b>12,483</b>	<b>3</b>	<b>12,480</b>
<b>National Science Foundation:</b>									
Research and Related Activities	492	.....	492	3,680	.....	3,680	3,757	.....	3,757
Education and Human Resources	74	.....	74	605	.....	605	630	.....	630
Other	50	.....	50	412	.....	412	428	.....	428
Proprietary Receipts from the Public	.....	4	-4	.....	32	-32	.....	20	-20
<b>Total--National Science Foundation</b>	<b>617</b>	<b>4</b>	<b>613</b>	<b>4,698</b>	<b>32</b>	<b>4,666</b>	<b>4,816</b>	<b>20</b>	<b>4,796</b>
<b>Office of Personnel Management:</b>									
Government Payment for Annuity, Employees Health and Life Insurance Benefits									
Civil Service Retirement and Disability Fund	5,506	.....	5,506	59,963	.....	59,963	59,537	.....	59,537
Employees Life Insurance Fund	345	339	6	2,142	2,754	-612	2,188	3,088	-900
Employees and Retired Employees Health Benefits Fund	4,658	4,407	251	36,036	35,652	384	33,873	34,102	-228
Other	10	.....	10	92	.....	92	276	.....	276
Proprietary Receipts from the Public	.....	1	-1	.....	6	-6	.....	8	-8
Intrabudgetary Transactions:									
Postal Service Contributions	-760	.....	-760	-1,525	.....	-1,525	-1,543	.....	-1,543
Civil Service Retirement and Disability Fund:									
Other	-4	.....	-4	-34	.....	-34	-34	.....	-34
<b>Total--Office of Personnel Management</b>	<b>10,744</b>	<b>4,747</b>	<b>5,997</b>	<b>105,425</b>	<b>38,412</b>	<b>67,014</b>	<b>102,757</b>	<b>37,198</b>	<b>65,559</b>
<b>Small Business Administration:</b>									
Salaries and Expenses	47	.....	47	77	(**)	77	196	(**)	196
Business Loans Program	6	2	4	423	10	413	586	7	579
Disaster Loans Program	1	(**)	1	248	1	247	267	1	266
Other	29	2	27	141	14	127	56	14	41
Proprietary Receipts from the Public	.....	(**)	(**)	.....	1,865	-1,865	.....	1,124	-1,124
Intrabudgetary Transactions	(**)	.....	(**)	(**)	.....	(**)	(**)	.....	(**)
<b>Total--Small Business Administration</b>	<b>82</b>	<b>4</b>	<b>79</b>	<b>889</b>	<b>1,890</b>	<b>-1,001</b>	<b>1,105</b>	<b>1,147</b>	<b>-42</b>
<b>Social Security Administration:</b>									
Payments to Social Security Trust Funds	125	.....	125	22,491	.....	22,491	18,334	.....	18,334
Supplemental Security Income Program	4,817	.....	4,817	43,981	.....	43,981	43,125	.....	43,125
Federal Old-Age and Survivors Insurance Trust Fund (Off-Budget):									

**Table 5. Outlays of the U.S. Government, June 2015 and Other Periods - Continued**

Classification	This Month			Current Fiscal Year to Date			Prior Fiscal Year to Date		
	Gross Outlays	Applicable Receipts	Outlays	Gross Outlays	Applicable Receipts	Outlays	Gross Outlays	Applicable Receipts	Outlays
<b>Social Security Administration: - Continued</b>									
Benefit Payments	61,767	.....	61,767	547,402	.....	547,402	521,058	.....	521,058
Administrative Expenses	279	.....	279	2,650	.....	2,650	2,468	.....	2,468
Payment to Railroad Retirement Account	4,258	.....	4,258	4,258	.....	4,258	4,257	.....	4,257
<b>Total--Federal Old-Age and Survivors Insurance Trust Fund (Off-Budget)</b>	<b>66,304</b>	<b>.....</b>	<b>66,304</b>	<b>554,310</b>	<b>.....</b>	<b>554,310</b>	<b>527,784</b>	<b>.....</b>	<b>527,784</b>
Federal Disability Insurance Trust Fund (Off-Budget):									
Benefit Payments	11,923	.....	11,923	107,139	.....	107,139	105,954	.....	105,954
Administrative Expenses	227	.....	227	2,090	.....	2,090	2,000	.....	2,000
Payment to Railroad Retirement Account	419	.....	419	419	.....	419	444	.....	444
<b>Total--Federal Disability Insurance Trust Fund (Off-Budget)</b>	<b>12,569</b>	<b>.....</b>	<b>12,569</b>	<b>109,648</b>	<b>.....</b>	<b>109,648</b>	<b>108,398</b>	<b>.....</b>	<b>108,398</b>
Other	19	.....	19	176	.....	176	260	.....	260
Proprietary Receipts from the Public:									
On-Budget	.....	256	-256	.....	1,914	-1,914	.....	2,022	-2,022
Off-Budget	.....	4	-4	.....	70	-70	.....	112	-112
Intrabudgetary Transactions:									
Off-Budget <sup>1</sup>	-124	.....	-124	-22,490	.....	-22,490	-18,333	.....	-18,333
<b>Total--Social Security Administration</b>	<b>83,710</b>	<b>261</b>	<b>83,450</b>	<b>708,116</b>	<b>1,984</b>	<b>706,133</b>	<b>679,568</b>	<b>2,134</b>	<b>677,434</b>
<b>Independent Agencies:</b>									
Broadcasting Board of Governors	57	3	54	525	(**)	525	516	(**)	516
Bureau of Consumer Financial Protection	39	(**)	39	373	(**)	373	310	(**)	310
Corporation for National and Community Service	72	(**)	72	701	1	700	706	2	704
Corporation for Public Broadcasting	.....	.....	.....	445	.....	445	445	.....	445
District of Columbia:									
Courts	26	(**)	26	223	(**)	223	217	.....	217
General and Special Payments	35	(**)	35	461	31	430	446	(**)	446
Equal Employment Opportunity Commission	30	1	29	266	2	264	244	1	243
Export-Import Bank of the United States	1,103	864	239	806	1,143	-337	881	1,014	-133
Federal Communications Commission:									
Universal Service Fund	700	.....	700	6,450	.....	6,450	7,020	.....	7,020
Spectrum Auction Program Account	(**)	.....	(**)	(**)	.....	(**)	1	.....	1
Other	32	2	30	218	15	203	209	22	188
Federal Deposit Insurance Corporation:									
Deposit Insurance Fund	-2,202	.....	-2,202	-8,656	.....	-8,656	-9,503	.....	-9,503
FSLIC Resolution Fund	(**)	(**)	(**)	2	(**)	2	3	5	-2
<b>Total--Federal Deposit Insurance Corporation</b>	<b>-2,202</b>	<b>(**)</b>	<b>-2,202</b>	<b>-8,655</b>	<b>(**)</b>	<b>-8,655</b>	<b>-9,501</b>	<b>5</b>	<b>-9,506</b>
Federal Drug Control Programs	21	.....	21	175	.....	175	170	.....	170
Federal Housing Finance Agency	18	.....	18	183	.....	183	182	.....	182
Institute of Museum and Library Services	19	(**)	19	162	(**)	162	171	.....	171
Intelligence Community Management Account	64	.....	64	364	.....	364	394	.....	394
Legal Services Corporation	28	.....	28	269	.....	269	231	.....	231
National Archives and Records Administration	28	3	25	275	19	255	275	17	257
National Credit Union Administration	27	169	-142	306	1,037	-732	-739	1,673	-2,412
National Endowment for the Arts	10	(**)	10	102	1	101	99	(**)	98
National Endowment for the Humanities	13	.....	13	104	(**)	104	99	(**)	98
National Labor Relations Board	21	(**)	21	197	(**)	197	192	(**)	192
Nuclear Regulatory Commission	81	9	72	764	682	82	724	605	119
Postal Service:									
Off-Budget:									
Public Enterprise Funds	5,116	5,558	-442	55,073	59,225	-4,152	53,394	56,201	-2,806
Other	.....	.....	.....	259	.....	259	256	.....	256
Other	.....	.....	.....	100	.....	100	78	.....	78
Railroad Retirement Board:									
Federal Windfall Subsidy	3	.....	3	24	.....	24	27	.....	27
Federal Payments to the Railroad Retirement Accounts	2	.....	2	560	.....	560	469	.....	469
Railroad Unemployment Insurance Trust Fund:									
Benefit Payments	5	.....	5	59	.....	59	68	.....	68
Transfer To Administrative Funds	2	.....	2	9	.....	9	9	.....	9
Rail Industry Pension Fund:									
Benefit Payments	436	.....	436	3,837	.....	3,837	3,770	.....	3,770
Advances from FOASDI Fund	.....	.....	.....	.....	.....	.....	-499	.....	-499
OASDI Certifications	-2	.....	-2	-14	.....	-14	494	.....	494

**Table 5. Outlays of the U.S. Government, June 2015 and Other Periods - Continued**

Classification	This Month			Current Fiscal Year to Date			Prior Fiscal Year to Date		
	Gross Outlays	Applicable Receipts	Outlays	Gross Outlays	Applicable Receipts	Outlays	Gross Outlays	Applicable Receipts	Outlays
<b>Independent Agencies: - Continued</b>									
Transfer to Administrative Funds	6	.....	6	41	.....	41	40	.....	40
Other	(**)	.....	(**)	-1	.....	-1	2	.....	2
National Railroad Retirement Investment Trust:									
Administrative Expenses	2	.....	2	47	.....	47	61	.....	61
Transfers to the Railroad Retirement Trust Funds from the National Railroad Retirement Investment Trust	143	.....	143	840	.....	840	1,008	.....	1,008
Railroad Social Security Equivalent Benefit Account:									
Benefit Payments	688	.....	688	5,366	.....	5,366	5,207	.....	5,207
Transfer To Administrative Funds	2	.....	2	19	.....	19	18	.....	18
Other	-4	.....	-4	7	.....	7	8	.....	8
Proprietary Receipts from the Public	.....	118	-118	.....	627	-627	.....	3,359	-3,359
Intrabudgetary Transactions:									
Payments from Other Funds to the Railroad Retirement Trust Funds									
Trust Funds	-4,677	.....	-4,677	-4,677	.....	-4,677	-4,701	.....	-4,701
Other	-145	.....	-145	-1,400	.....	-1,400	-1,477	.....	-1,477
<b>Total--Railroad Retirement Board</b>	<b>-3,538</b>	<b>118</b>	<b>-3,656</b>	<b>4,717</b>	<b>627</b>	<b>4,090</b>	<b>4,504</b>	<b>3,359</b>	<b>1,144</b>
Securities and Exchange Commission	127	(**)	127	561	(**)	561	592	1	591
Smithsonian Institution	84	(**)	84	718	(**)	718	752	(**)	752
Tennessee Valley Authority	4,805	4,663	142	32,801	32,183	619	36,550	37,742	-1,191
Other	159	-1	160	2,210	406	1,804	2,133	391	1,742
<b>Total--Independent Agencies</b>	<b>6,978</b>	<b>11,389</b>	<b>-4,412</b>	<b>101,153</b>	<b>95,374</b>	<b>5,779</b>	<b>101,551</b>	<b>101,033</b>	<b>518</b>
<b>Undistributed Offsetting Receipts:</b>									
Other Interest	.....	(**)	(**)	.....	(**)	(**)	.....	(**)	(**)
Employer Share, Employee Retirement:									
Department of Health and Human Services:									
Federal Hospital Insurance Trust Fund:									
Federal Employer Contributions	-286	.....	-286	-2,571	.....	-2,571	-2,575	.....	-2,575
Postal Service Employer Contributions	-51	.....	-51	-462	.....	-462	-447	.....	-447
Department of State:									
Foreign Service Retirement and Disability Fund	-26	.....	-26	-255	.....	-255	-251	.....	-251
Other Defense Civil Programs:									
Military Retirement Fund	-1,580	.....	-1,580	-20,932	.....	-20,932	-21,699	.....	-21,699
Department of Defense Medicare-Eligible Retiree Health Care Fund									
Care Fund	.....	.....	.....	-7,229	.....	-7,229	-7,650	.....	-7,650
Office of Personnel Management:									
Civil Service Retirement and Disability Fund	-2,132	.....	-2,132	-20,145	.....	-20,145	-18,150	.....	-18,150
Social Security Administration:									
Federal Old-Age and Survivors Insurance Trust Fund:									
Federal Employer Contributions	-1,180	.....	-1,180	-10,138	.....	-10,138	-9,956	.....	-9,956
Federal Disability Insurance Trust Fund:									
Federal Employer Contributions	-201	.....	-201	-1,722	.....	-1,722	-1,691	.....	-1,691
Other	(**)	.....	(**)	-2	.....	-2	-4	.....	-4
<b>Total--Employer Share, Employee Retirement</b>	<b>-5,456</b>	<b>.....</b>	<b>-5,456</b>	<b>-63,456</b>	<b>.....</b>	<b>-63,456</b>	<b>-62,424</b>	<b>.....</b>	<b>-62,424</b>
Interest Received by Trust Funds:									
Judicial Branch:									
Judicial Survivors Annuity Fund	1	.....	1	14	.....	14	-10	.....	-10
Department of Health and Human Services:									
Federal Hospital Insurance Trust Fund	-4,142	.....	-4,142	-8,562	.....	-8,562	-8,911	.....	-8,911
Federal Supplementary Medical Insurance Trust Fund	-998	.....	-998	-2,407	.....	-2,407	-2,404	.....	-2,404
Department of Homeland Security:									
Oil Spill Liability Trust Fund	-1	.....	-1	-32	.....	-32	-26	.....	-26
Other	-2	.....	-2	-5	.....	-5	-5	.....	-5
Department of Labor:									
Unemployment Trust Fund	-421	.....	-421	-865	.....	-865	-681	.....	-681
Department of State:									
Foreign Service Retirement and Disability Fund	-314	.....	-314	-628	.....	-628	-654	.....	-654
Department of Transportation:									
Airport and Airway Trust Fund	-117	.....	-117	-263	.....	-263	-225	.....	-225
Department of Veterans Affairs:									
National Service Life Insurance Fund	-104	.....	-104	-227	.....	-227	-270	.....	-270
United States Government Life Insurance Fund	(**)	.....	(**)	(**)	.....	(**)	(**)	.....	(**)
Corps of Engineers	-2	.....	-2	-65	.....	-65	-80	.....	-80
Other Defense Civil Programs:									
Military Retirement Fund	-1,121	.....	-1,121	4,509	.....	4,509	-7,487	.....	-7,487
Educational Benefits Fund	-2	.....	-2	-37	.....	-37	-58	.....	-58
Armed Forces Retirement Home	(**)	.....	(**)	-2	.....	-2	-2	.....	-2

**Table 5. Outlays of the U.S. Government, June 2015 and Other Periods - Continued**

Classification	This Month			Current Fiscal Year to Date			Prior Fiscal Year to Date		
	Gross Outlays	Applicable Receipts	Outlays	Gross Outlays	Applicable Receipts	Outlays	Gross Outlays	Applicable Receipts	Outlays
<b>Undistributed Offsetting Receipts: - Continued</b>									
Environmental Protection Agency	(**)	.....	(**)	-17	.....	-17	-35	.....	-35
Office of Personnel Management:									
Civil Service Retirement and Disability Fund	-14,426	.....	-14,426	-29,243	.....	-29,243	-30,967	.....	-30,967
Social Security Administration:									
Federal Old-Age and Survivors Insurance Trust Fund	-46,454	.....	-46,454	-93,104	.....	-93,104	-96,171	.....	-96,171
Federal Disability Insurance Trust Fund	-1,126	.....	-1,126	-2,674	.....	-2,674	-3,947	.....	-3,947
Independent Agencies:									
Railroad Retirement Board	27	.....	27	-20	.....	-20	3	.....	3
Other	-1	.....	-1	-11	.....	-11	-13	.....	-13
Other	-10	.....	-10	-34	.....	-34	-116	.....	-116
Total--Interest Received by Trust Funds	-69,213	.....	-69,213	-133,674	.....	-133,674	-152,060	.....	-152,060
Rents and Royalties on the Outer Continental Shelf Lands	.....	1,155	-1,155	.....	3,832	-3,832	.....	5,678	-5,678
Spectrum Auction Proceeds	-18,628	.....	-18,628	-18,628	.....	-18,628	.....	.....	.....
Spectrum Relocation Activities	.....	11,500	-11,500	.....	11,500	-11,500	.....	.....	.....
<b>Total--Undistributed Offsetting Receipts</b>	<b>-93,297</b>	<b>12,655</b>	<b>-105,952</b>	<b>-215,758</b>	<b>15,332</b>	<b>-231,090</b>	<b>-214,485</b>	<b>5,678</b>	<b>-220,163</b>
<b>Total Outlays</b>	<b>345,847</b>	<b>54,690</b>	<b>291,157</b>	<b>3,079,106</b>	<b>318,805</b>	<b>2,760,301</b>	<b>3,014,542</b>	<b>388,293</b>	<b>2,626,250</b>
<b>Total On-Budget</b>	<b>310,943</b>	<b>49,128</b>	<b>261,815</b>	<b>2,489,944</b>	<b>259,510</b>	<b>2,230,434</b>	<b>2,454,809</b>	<b>331,980</b>	<b>2,122,829</b>
<b>Total Off-Budget</b>	<b>34,904</b>	<b>5,562</b>	<b>29,342</b>	<b>589,162</b>	<b>59,295</b>	<b>529,867</b>	<b>559,734</b>	<b>56,313</b>	<b>503,421</b>
<b>Total Surplus (+) or Deficit (-)</b>			<b>+51,776</b>			<b>-313,381</b>			<b>-365,865</b>
<b>Total On-Budget</b>			<b>+7,492</b>			<b>-372,173</b>			<b>-424,485</b>
<b>Total Off-Budget</b>			<b>+44,284</b>			<b>+58,792</b>			<b>+58,620</b>

**MEMORANDUM**

Receipts Offset Against Outlays (In Millions)

	Current Fiscal Year to Date	Comparable Period Prior Fiscal Year
Proprietary Receipts	156,669	224,014
Intrabudgetary Transactions	527,801	546,209
Governmental Receipts	27,068	7,108
<b>Total Receipts Offset Against Outlays</b>	<b>711,538</b>	<b>777,331</b>

1 Includes FICA and SECA tax credits, non-contributory military service credits, special benefits for the aged and credit for the unnegotiated OASI benefit checks.

Note: Details may not add to totals due to rounding.  
 ... No Transactions  
 (\*\*) Less than absolute value of \$500,000

**Table 6. Means of Financing the Deficit or Disposition of Surplus by the U.S. Government, June 2015 and Other Periods**

Assets and Liabilities Directly Related to Budget Off-Budget Activity	Net Transactions (- denotes net reduction of either liability or asset accounts)			Account Balances Current Fiscal Year		
	This Month	Fiscal Year to Date		Beginning of		Close of This Month
		This Year	Prior Year	This Year	This Month	
<b>Liability Accounts:</b>						
Borrowing from the Public:						
Treasury Securities, Issued Under General Financing Authorities:						
Debt Held by the Public	23,708	291,443	595,940	12,784,971	13,052,706	13,076,413
Intragovernmental Holdings	-24,562	36,483	298,482	5,039,100	5,100,145	5,075,583
Total Treasury Securities Outstanding	-854	327,926	894,423	17,824,071	18,152,852	18,151,998
Plus Premium on Treasury Securities	-365	702	-1,430	34,211	35,277	34,912
Less Discount on Treasury Securities	1,275	-28	6,615	90,118	88,815	90,090
Total Treasury Securities Net of Premium and Discount	-2,494	328,656	886,378	17,768,163	18,099,313	18,096,820
Agency Securities, Issued Under Special Financing Authorities (See Schedule B; for Other Agency Borrowing, See Schedule C)						
Total Federal Securities	167	795	-1,046	23,860	24,489	24,655
	-2,327	329,451	885,332	17,792,023	18,123,802	18,121,475
Deduct:						
Federal Securities Held as Investments of Government Accounts (See Schedule D)						
Less Discount on Federal Securities Held as Investments of Government Accounts	-23,275	37,702	303,379	5,039,265	5,100,242	5,076,967
Net Federal Securities Held as Investments of Government Accounts	-86	-778	4,639	26,677	25,985	25,899
Total Borrowing from the Public	-23,189	38,480	298,740	5,012,588	5,074,257	5,051,068
Accrued Interest Payable to the Public	20,862	290,971	586,593	12,779,436	13,049,545	13,070,407
Allocations of Special Drawing Rights	5,639	4,161	5,460	53,839	52,361	58,000
Deposit Funds	561	-2,691	417	52,358	49,106	49,668
Miscellaneous Liability Accounts (Includes Checks Outstanding Etc.)	-28,378	142,658	-114,690	12,154	183,190	154,812
	-967	-769	167	8,166	8,364	7,397
<b>Total Liability Accounts</b>	<b>-2,282</b>	<b>434,330</b>	<b>477,947</b>	<b>12,905,954</b>	<b>13,342,566</b>	<b>13,340,284</b>
<b>Asset Accounts (Deduct)</b>						
Cash and Monetary Assets:						
U.S. Treasury Operating Cash:						
Federal Reserve Account <sup>1</sup>	55,393	96,038	50,913	158,302	198,947	254,340
Balance	55,393	96,038	50,913	158,302	198,947	254,340
Special Drawing Rights:						
Total Holdings	570	-2,724	445	53,148	49,855	50,425
SDR Certificates Issued to Federal Reserve Banks	.....	.....	.....	-5,200	-5,200	-5,200
Balance	570	-2,724	445	47,948	44,655	45,225
Reserve Position on the U.S. Quota in the IMF:						
U.S. Subscription to International Monetary Fund:						
Direct Quota Payments	(**)	(**)	.....	54,424	54,424	54,424
Maintenance of Value Adjustments	669	-3,209	497	8,385	4,506	5,176
Letter of Credit Issued to IMF	12	-4,048	-4,118	-49,658	-53,718	-53,706
Dollar Deposits with the IMF	7	-1	1	-161	-169	-162
Receivable/Payable (-) for Interim Maintenance of Value						
Adjustments	-561	2,439	-360	1,798	4,799	4,238
Balance	127	-4,819	-3,980	14,789	9,842	9,969
Loans to International Monetary Fund	-596	-3,645	957	14,212	11,162	10,566
Other Cash and Monetary Assets	(**)	-140	-381	25,849	25,709	25,710
Total Cash and Monetary Assets	55,494	84,710	47,955	261,100	290,315	345,810
Non-Federal Securities of the National Railroad Retirement Investment Trust						
Net Activity, Guaranteed Loan Financing (See Schedule E)	-8	-174	2,020	25,678	25,512	25,503
Net Activity, Direct Loan Financing (See Schedule E)	2,008	2,143	9,827	1,993	2,128	4,136
Miscellaneous Asset Accounts	-8,278	34,701	50,207	1,061,797	1,104,776	1,096,498
	277	-327	1,065	786	78	355
<b>Total Asset Accounts</b>	<b>49,494</b>	<b>121,053</b>	<b>111,074</b>	<b>1,351,353</b>	<b>1,422,808</b>	<b>1,472,302</b>
<b>Excess of Liabilities (+) or Assets (-)</b>	<b>-51,776</b>	<b>313,381</b>	<b>366,873</b>	<b>11,554,601</b>	<b>11,919,758</b>	<b>11,867,982</b>
Transactions Not Applied to Current Year's Surplus or Deficit (See Schedule A for Details)						
	.....	-1	-1,008	.....	-1	-1
<b>Total Budget and Off-Budget Federal Entities (Financing of Deficit (+) or Disposition of Surplus (-))</b>	<b>-51,776</b>	<b>313,381</b>	<b>365,865</b>	<b>11,554,601</b>	<b>11,919,757</b>	<b>11,867,981</b>

1 Major sources of information used to determine Treasury's operating cash balance include Federal Reserve Banks, Treasury Regional Finance Centers, Internal Revenue Service Centers, various electronic systems, and information on the Public Debt. Information is presented on a modified cash basis. Deposits are

reflected as received and withdrawals are reflected as processed.  
Note: Details may not add to totals due to rounding.

... No Transactions

(\*\*) Less than absolute value of \$500,000

**Table 6. Schedule A-Analysis of Change in Excess of Liabilities of the U.S. Government, June 2015 and Other Periods**

Classification	[\$ millions]		
	This Month	Fiscal Year to Date	
		This Year	Prior Year
<b>Excess of Liabilities Beginning of Period:</b>			
Based on Composition of Unified Budget in Preceding Period	11,919,758	11,554,591	11,070,365
Adjustments During Current Fiscal Year for Changes in Composition of Unified Budget:			
Revisions by Federal Agencies to the Prior Budget Results	.....	9	42
Excess of Liabilities Beginning of Period (Current Basis)	11,919,758	11,554,601	11,070,408
Budget Surplus (-) or Deficit:			
Based on Composition of Unified Budget in Prior Fiscal Year	-51,776	313,381	365,865
Total Surplus (-) or Deficit (Table 2)	-51,776	313,381	365,865
Total-On-Budget (Table 2)	-7,492	372,173	424,485
Total-Off-Budget (Table 2)	-44,284	-58,792	-58,620
Transactions Not Applied to Current Year's Surplus or Deficit:			
Premium/Discount on Buyback of U.S. Treasury Securities	.....	1	.....
Reclassification of Aged Unreconciled Accounts	.....	(**)	1,008
Total-Transactions Not Applied to Current Year's Surplus or Deficit	.....	1	1,008
<b>Excess of Liabilities Close of Period</b>	<b>11,867,982</b>	<b>11,867,982</b>	<b>11,436,272</b>

Note: Details may not add to totals due to rounding.  
 ... No Transactions

(\*\*) Less than absolute value of \$500,000

**Table 6. Schedule B-Securities Issued by Federal Agencies Under Special Financing Authorities, June 2015 and Other Periods**

Classification	[\$ millions]					
	This Month	Net Transactions (-) denotes net reduction of liability accounts		Account Balances Current Fiscal Year		
		Fiscal Year to Date		Beginning of		Close of
	This Year	Prior Year	This Year	This Month	This Month	
<b>Agency Securities, Issued Under Special Financing Authorities:</b>						
Obligations Guaranteed by the United States, Issued By:						
Department of Housing and Urban Development:						
Federal Housing Administration	.....	.....	.....	19	19	19
Obligations Not Guaranteed by the United States, Issued By:						
Legislative Branch:						
Architect of the Capitol	1	-1	-1	106	103	104
Independent Agencies:						
Federal Communications Commission	.....	.....	.....	(**)	(**)	(**)
National Archives and Records Administration	.....	-10	-9	116	106	106
Tennessee Valley Authority	166	806	-1,036	23,620	24,260	24,426
<b>Total Agency Securities</b>	<b>167</b>	<b>795</b>	<b>-1,046</b>	<b>23,860</b>	<b>24,489</b>	<b>24,655</b>

Note: Details may not add to totals due to rounding.  
 ... No Transactions

(\*\*) Less than absolute value of \$500,000



**Table 6. Schedule C (Memorandum)-Federal Agency Borrowing Financed Through the Issue of Treasury Securities, June 2015 and Other Periods**

Classification	[\$ millions]					
	Transactions			Account Balances Current Fiscal Year		
	This Month	Fiscal Year to Date		Beginning of		Close of This Month
This Year		Prior Year	This Year	This Month		
<b>Borrowing from the US Treasury:</b>						
Department of Agriculture:						
Farm Service Agency:						
Commodity Credit Corporation	16	-3,225	2,861	9,811	6,570	6,586
Agricultural Credit Insurance Fund	558	1,949	644	8,257	9,648	10,206
Farm Storage Facility Loans	-28	-2	172	994	1,019	992
Emergency Boll Weevil Loan Fund	.....	4	(**)	2	5	5
Rural Housing Service:						
Rural Housing Insurance	-881	-384	-566	16,369	16,866	15,984
Rural Community Facility Loans Fund	65	327	-27	5,517	5,778	5,844
Multifamily Housing Revitalization Loan Account	13	19	-44	240	246	259
Rural Business - Cooperative Service:						
Rural Business and Industry Loans	.....	-13	-18	68	56	56
Rural Development Loan Fund	1	-4	-11	316	311	312
Rural Economic Development Loan Fund	5	16	4	169	181	186
Renewable Energy Guaranteed Loan Account	.....	.....	.....	(**)	(**)	(**)
Rural Microenterprise Investment Loans	(**)	3	3	22	25	25
Rural Utilities Service:						
Rural Water and Waste Disposal Fund	102	57	-497	12,257	12,213	12,314
Rural Electrification and Telecommunications Fund	39	-517	-655	12,308	11,752	11,791
Rural Telephone Bank	.....	-46	-62	293	247	247
Distance Learning and Telemedicine Program	24	-153	-41	1,345	1,169	1,193
Foreign Agricultural Service	.....	.....	.....	748	748	748
Department of Commerce:						
National Oceanic and Atmospheric Administration:						
Fisheries Finance	1	81	31	511	591	591
State and Local Implementation Fund	.....	18	.....	22	40	40
National Telecommunications and Information Administration:						
Public Safety Trust Fund	.....	.....	1,961	779	779	779
Department of Defense--Military Programs:						
Family Housing Improvement Loans	.....	60	87	1,391	1,451	1,451
Department of Education:						
College Housing and Academic Facilities Loans	.....	(**)	(**)	32	32	32
Federal Direct Student Loans	49,978	149,057	146,917	855,279	954,358	1,004,336
Teach Grant Loans	53	103	67	555	605	658
Temporary Student Loan Purchase Authority	1,825	1,558	815	66,274	66,007	67,832
Federal Family Education Loans	.....	.....	.....	43,254	43,254	43,254
Department of Energy:						
Bonneville Power Administration Fund	19	475	402	4,242	4,698	4,717
Western Area Power Administration - Recovery Act	.....	5	34	92	97	97
Advanced Technology Vehicles Manufacturing Loans	.....	.....	-4	27	27	27
Title 17 Innovative Technology Loans	51	62	109	91	102	153
Department of Health and Human Services:						
Consumer Operated and Oriented Plan	.....	163	249	857	1,019	1,019
Consumer Operated and Oriented Plan Program Contingency Fund	.....	206	47	37	243	243
Department of Homeland Security:						
National Flood Insurance Fund	.....	-1,000	.....	24,000	23,000	23,000
Disaster Assistance Loan Fund	-62	-62	21	81	81	19
Department of Housing and Urban Development:						
Public and Indian Housing Programs:						
Low-Rent Public Housing - Loans and Other Expenses	.....	.....	.....	116	116	116
Native Hawaiian Housing Loans	.....	.....	.....	6	6	6
Housing Programs:						
Emergency Homeowners' Relief Fund	.....	.....	(**)	3	3	3
Federal Housing Administration	10	20	.....	27,528	27,538	27,548
Green Retrofit Program for Multifamily Housing-Recovery Act	.....	.....	.....	8	8	8
Department of the Interior:						
Helium Fund	.....	.....	-44	.....	.....	.....
Bureau of Indian Affairs and Bureau of Indian Education	.....	(**)	(**)	5	5	5
Bureau of Reclamation Loan Fund	.....	(**)	(**)	34	34	34
Assistance to American Samoa Loan Fund	.....	(**)	1	9	9	9

**Table 6. Schedule C (Memorandum)-Federal Agency Borrowing Financed Through the Issue of Treasury Securities, June 2015 and Other Periods - Continued**

Classification	Transactions			Account Balances Current Fiscal Year		
	This Month	Fiscal Year to Date		Beginning of		Close of This Month
		This Year	Prior Year	This Year	This Month	
<b>Borrowing from the US Treasury: - Continued</b>						
Department of Labor:						
Black Lung Disability Trust Fund	.....	-160	.....	4,733	4,573	4,573
Department of State:						
Repatriation Loans	.....	1	1	4	5	5
Department of Transportation:						
Federal Highway Administration:						
Transportation Infrastructure Finance and Innovation Fund	-781	84	1,098	7,342	8,208	7,427
Federal Railroad Administration:						
Railroad Rehabilitation and Improvement Loan Fund	.....	67	48	843	910	910
Other	.....	.....	.....	(**)	(**)	(**)
Maritime Administration:						
Maritime Guaranteed Loan (Title XI) Fund	.....	.....	-37	.....	.....	.....
Department of the Treasury:						
Departmental Offices:						
Community Development Financial Institutions Fund	2	16	16	53	67	69
Temporary Credit and Liquidity Program	.....	-331	-334	8,072	7,741	7,741
Troubled Asset Relief Program	.....	-676	-2,704	1,304	629	629
Small Business Lending Financing Fund	.....	.....	.....	3,212	3,212	3,212
Federal Financing Bank Revolving Fund	2,039	2,691	-5,235	56,528	57,180	59,219
Department of Veterans Affairs:						
Veterans Housing Benefit Program Fund	.....	359	252	624	983	983
Native American Veteran Housing Fund	.....	8	4	67	75	75
Vocational Rehabilitation Loan Fund	.....	1	1	1	2	2
Corps of Engineers:						
Washington Aqueduct	(**)	(**)	(**)	1	1	1
Environmental Protection Agency:						
Abatement, Control, and Compliance Loan Program	.....	.....	.....	(**)	(**)	(**)
International Assistance Programs:						
International Security Assistance:						
Military Debt Reduction	.....	.....	.....	37	37	37
Agency for International Development:						
International Debt Reduction	.....	.....	.....	478	478	478
Development Credit Authority Loan Fund	.....	.....	(**)	3	3	3
Overseas Private Investment Corporation	68	336	288	2,807	3,075	3,143
International Monetary Programs	.....	.....	1	7,847	7,847	7,847
Small Business Administration:						
Business Loan Fund	.....	121	428	1,706	1,827	1,827
Disaster Loan Fund	.....	198	340	6,051	6,248	6,248
Independent Agencies:						
Export-Import Bank of the United States	121	1,669	3,231	21,634	23,182	23,303
Federal Communications Commission:						
Spectrum Auction Loan Fund	.....	.....	(**)	.....	.....	.....
National Credit Union Administration	.....	.....	-2,125	2,600	2,600	2,600
Presidio Trust	.....	.....	.....	50	50	50
Railroad Retirement Board:						
Social Security Equivalent Benefit Account	-3,518	-989	-1,034	3,532	6,061	2,543
Smithsonian Institution:						
John F. Kennedy Center Parking Facilities	.....	.....	.....	20	20	20
<b>Total Borrowing from the US Treasury</b>	<b>49,720</b>	<b>152,173</b>	<b>146,695</b>	<b>1,223,498</b>	<b>1,325,951</b>	<b>1,375,671</b>
<b>Borrowing from the Federal Financing Bank:</b>						
Department of Agriculture:						
Rural Utilities Service:						
Rural Electrification and Telecommunications Fund	-87	-109	1,761	42,725	42,703	42,616
Department of Education:						
Historically Black College and University Capital Financing Fund	20	49	87	1,260	1,289	1,309
Department of Energy:						
Advanced Technology Vehicles Manufacturing Loans	-163	-488	-639	5,160	4,835	4,672
Title 17 Innovative Technology Loans	1,889	1,713	1,329	9,369	9,193	11,082
Department of Health and Human Services:						
Health Maintenance Organization Loan and Loan Guarantee Fund	.....	.....	.....	(**)	(**)	(**)

**Table 6. Schedule C (Memorandum)-Federal Agency Borrowing Financed Through the Issue of Treasury Securities, June 2015 and Other Periods - Continued**

Classification	Transactions			Account Balances Current Fiscal Year		
	This Month	Fiscal Year to Date		Beginning of		Close of This Month
		This Year	Prior Year	This Year	This Month	
<b>Borrowing from the Federal Financing Bank: - Continued</b>						
Department of Housing and Urban Development:						
Housing Programs:						
Federal Housing Administration	18	89	.....	.....	72	89
Department of Transportation:						
Federal Railroad Administration:						
Railroad Rehabilitation and Improvement Loan Fund	.....	.....	(**)	.....	.....	.....
Department of the Treasury:						
Departmental Offices:						
Community Development Financial Institutions Fund	13	63	.....	38	88	101
Department of Veterans Affairs:						
Guaranteed Transitional Housing Loans for Homeless Veterans	.....	(**)	(**)	5	5	5
General Services Administration:						
Federal Buildings Fund	.....	.....	-64	.....	.....	.....
International Assistance Programs:						
International Security Assistance:						
Foreign Military Financing Program	.....	.....	-47	.....	.....	.....
Independent Agencies:						
Postal Service	.....	.....	.....	15,000	15,000	15,000
<b>Total Borrowing from the Federal Financing Bank</b>	<b>1,689</b>	<b>1,318</b>	<b>2,426</b>	<b>73,555</b>	<b>73,184</b>	<b>74,873</b>

Note: Details may not add to totals due to rounding.

Note: This table includes lending by the Federal Financing Bank accomplished by the purchase of agency financial assets, by the acquisition of agency debt securities, and by direct loans on behalf of an agency. The Federal Financing Bank borrows from Treasury and issues its own securities and in turn may loan

these funds to agencies in lieu of agencies borrowing directly through Treasury or issuing their own securities.

... No Transactions

(\*\*) Less than absolute value of \$500,000

**Table 6. Schedule D-Investments of Federal Government Accounts in Federal Securities, June 2015 and Other Periods**

[\$ millions]

Classification	Net Purchases or Sales (-)			Securities Held as Investments Current Fiscal Year		
	This Month	Fiscal Year to Date		Beginning of		Close of This Month
		This Year	Prior Year	This Year	This Month	
<b>Federal Funds:</b>						
Department of Agriculture	8	42	32	143	178	185
Department of Commerce	-3	.....	.....	.....	3	.....
Department of Defense--Military Programs:						
Defense Cooperation Account	-8	-8	(**)	8	8	.....
Department of Energy	-71	330	650	55,464	55,865	55,794
Department of Health and Human Services	.....	5	3	2,101	2,106	2,106
Department of Homeland Security	.....	167	.....	.....	167	167
Department of Housing and Urban Development:						
Housing Programs:						
Federal Housing Administration Fund	707	3,870	4,008	6,379	9,541	10,249
Government National Mortgage Association:						
Guarantees of Mortgage-Backed Securities	(**)	8,575	-336	151	8,726	8,726
Department of the Interior	-719	-88	-104	6,848	7,479	6,760
Department of Labor	304	1,124	75	17,490	18,311	18,615
Department of State:						
Foreign Service Retirement and Disability Fund	(**)	(**)	.....	.....	(**)	(**)
Department of Transportation	151	-31	199	2,180	1,998	2,149
Department of the Treasury	-18	-29	-756	25,317	25,307	25,289
Department of Veterans Affairs:						
Veterans Reopened Insurance Fund	1	-20	-17	199	179	180
Servicemen'S Group Life Insurance Fund	(**)	(**)	(**)	1	1	1
Other Defense Civil Programs:						
Uniformed Services Retiree Health Care Fund	-184	4,985	11,868	200,372	205,541	205,357
Office of Personnel Management:						
Postal Service Contributions	-3,996	-3,231	6,144	48,468	49,233	45,237
Independent Agencies:						
Federal Deposit Insurance Corporation:						
Deposit Insurance Fund	2,205	8,687	9,661	48,750	55,232	57,437
FSLIC Resolution Fund	(**)	-1	2	827	827	826
Federal Housing Finance Agency	-16	47	44	64	127	111
National Credit Union Administration	146	755	304	11,555	12,165	12,311
Postal Service	518	2,234	2,569	5,450	7,167	7,684
Tennessee Valley Authority	(**)	.....	(**)	25	25	25
Other	114	649	731	17,190	17,724	17,838
Other	388	-958	1,090	13,550	12,204	12,592
Total Treasury Securities	-473	27,106	36,164	462,532	490,111	489,638
<b>Total Federal Funds</b>	<b>-473</b>	<b>27,106</b>	<b>36,164</b>	<b>462,532</b>	<b>490,111</b>	<b>489,638</b>
<b>Trust Funds:</b>						
Legislative Branch:						
Library of Congress	(**)	-2	6	29	26	27
United States Tax Court	.....	(**)	(**)	11	11	11
Other	-1	-1	-1	30	30	29
Judicial Branch:						
Judicial Retirement Funds	-10	26	79	1,084	1,120	1,110
Department of Agriculture	.....	.....	6	6	6	6
Department of Defense--Military Programs:						
Voluntary Separation Incentive Fund	-7	-2	-5	222	227	220
Other	-57	-505	-38	875	427	370
Department of Health and Human Services:						
Federal Hospital Insurance Trust Fund	8,418	3,148	6,672	202,207	196,937	205,355
Federal Supplementary Medical Insurance Trust Fund	-128	250	9,951	68,391	68,769	68,642
Other	-30	20	72	3,385	3,436	3,406
Department of Homeland Security	36	555	334	5,589	6,108	6,144
Department of the Interior	(**)	-1	2	9	8	8
Department of Labor:						
Unemployment Trust Fund	-5,583	8,468	6,585	35,919	49,971	44,388
Other	-10	-29	-27	63	44	35
Department of State:						
Foreign Service Retirement and Disability Fund	345	332	399	17,792	17,779	18,124
Other	(**)	4	(**)	43	47	47
Department of Transportation:						
Airport and Airway Trust Fund	-648	931	240	12,759	14,337	13,690

**Table 6. Schedule D-Investments of Federal Government Accounts in Federal Securities, June 2015 and Other Periods - Continued**

Classification	Net Purchases or Sales (-)			Securities Held as Investments Current Fiscal Year		
	This Month	Fiscal Year to Date		Beginning of		Close of This Month
		This Year	Prior Year	This Year	This Month	
<b>Trust Funds: - Continued</b>						
Highway Trust Fund	-1,528	-3,927	4,940	10,696	8,297	6,769
Department of the Treasury	-74	457	118	1,644	2,174	2,101
Department of Veterans Affairs:						
General Post Fund, National Homes	12	41	-21	65	95	106
National Service Life Insurance	34	-493	-419	5,629	5,102	5,136
United States Government Life Insurance Fund	(**)	-1	-2	7	6	6
Veterans Special Life Insurance Fund	32	-33	-11	1,863	1,799	1,830
Corps of Engineers	47	262	571	8,439	8,654	8,701
Other Defense Civil Programs:						
Military Retirement Fund	-2,422	49,131	64,924	483,111	534,664	532,242
Other	-13	-195	-199	1,624	1,443	1,429
Environmental Protection Agency	-75	554	531	3,887	4,516	4,441
National Aeronautics and Space Administration	(**)	(**)	(**)	16	16	15
Office of Personnel Management:						
Civil Service Retirement and Disability Fund	-64,737	-103,752	115,315	857,169	818,154	753,417
Employees Life Insurance Fund	-6	602	698	43,213	43,821	43,815
Employees and Retired Employees Health Benefits Fund	-248	-390	201	23,558	23,416	23,168
Social Security Administration:						
Federal Old-Age and Survivors Insurance Trust Fund	44,299	74,054	76,426	2,712,805	2,742,560	2,786,859
Federal Disability Insurance Trust Fund	-546	-19,138	-20,613	70,113	51,521	50,975
Independent Agencies:						
Harry S Truman Scholarship Foundation	(**)	-5	-10	54	49	49
Japan-United States Friendship Commission	.....	.....	.....	38	38	38
Railroad Retirement Board:						
Treasury Securities	140	76	293	2,670	2,606	2,746
Agency Securities	.....	1	.....	3	5	5
Other	-43	156	197	1,713	1,912	1,869
Total Treasury Securities	-22,802	10,595	267,215	4,576,730	4,610,127	4,587,324
Total Agency Securities	.....	1	.....	3	5	5
<b>Total Trust Funds</b>	<b>-22,802</b>	<b>10,596</b>	<b>267,215</b>	<b>4,576,733</b>	<b>4,610,132</b>	<b>4,587,329</b>
<b>Grand Total</b>	<b>-23,275</b>	<b>37,702</b>	<b>303,379</b>	<b>5,039,265</b>	<b>5,100,242</b>	<b>5,076,967</b>

Note: Details may not add to totals due to rounding.

Note: Investments are in Treasury securities unless otherwise noted.

... No Transactions

(\*\*) Less than absolute value of \$500,000

**Table 6. Schedule E-Net Activity, Guaranteed and Direct Loan Financing, June 2015 and Other Periods**

[\$ millions]

Classification	Net Transactions (-) denotes net reduction of asset accounts			Account Balances Current Fiscal Year		
	This Month	Fiscal Year to Date		Beginning of		Close of This Month
		This Year	Prior Year	This Year	This Month	
<b>Guaranteed Loan Financing Activity:</b>						
Department of Agriculture:						
Farm Service Agency:						
Commodity Credit Corporation Export Fund	-1	7	-25	239	247	246
Agricultural Credit Insurance Fund	-3	-22	-6	-177	-196	-199
Natural Resources Conservation Service:						
Agricultural Resource Conservation Demonstration Program	.....	.....	.....	(**)	(**)	(**)
Rural Housing Service:						
Rural Community Facility Loans	1	3	-2	-57	-55	-54
Rural Housing Insurance Fund	14	178	14	-3,667	-3,503	-3,489
Rural Business - Cooperative Service:						
Rural Business and Industry Loans	-9	-23	-33	-488	-501	-510
Renewable Energy Guaranteed Loan Account	.....	-9	-7	-22	-31	-31
Biorefinery Assistance Loan Account	.....	(**)	(**)	-22	-22	-22
Rural Utilities Service:						
Rural Water and Waste Disposal Fund	(**)	(**)	(**)	-25	-25	-25
Department of Commerce:						
National Oceanic and Atmospheric Administration:						
Fishing Vessel Obligations	.....	.....	(**)	.....	.....	.....
General Administration:						
Emergency Oil, Gas, and Steel Account	.....	.....	.....	5	5	5
Department of Defense--Military Programs	.....	(**)	.....	-59	-59	-59
Department of Education:						
Office of Student Financial Assistance:						
Federal Family Education Loans	640	-3,620	2,082	38,015	33,754	34,395
Department of Energy:						
Title 17 Innovative Technology Loans	.....	11	-39	-229	-218	-218
Department of Health and Human Services:						
Health Resources and Services Administration:						
Health Center Loans	.....	.....	(**)	-3	-3	-3
Health Education Assistance Loans	.....	.....	42	-70	-70	-70
Department of Housing and Urban Development:						
Public and Indian Housing Programs:						
Indian Housing Loans	-3	-8	-2	-155	-160	-163
Native Hawaiian Housing Loans	(**)	-2	1	3	1	1
Community Planning and Development:						
Community Development Loans	(**)	(**)	4	-109	-109	-109
Housing Programs:						
FHA-Mutual Mortgage Insurance Loans	1,652	4,358	7,920	-15,830	-13,124	-11,472
FHA-General and Special Risk Fund	249	2,477	3,351	-4,512	-2,285	-2,036
Home Ownership Preservation Entity Fund	(**)	2	1	-18	-16	-16
Government National Mortgage Association:						
Guarantees of Mortgage-Backed Securities	-109	-906	-1,649	3,400	2,602	2,493
Department of the Interior:						
Bureau of Indian Affairs and Bureau of Indian Education						
	-6	-6	-2	-59	-59	-65
Department of Transportation:						
Office of the Secretary:						
Minority Business Resource Center Fund	.....	(**)	(**)	-1	(**)	(**)
Federal Highway Administration:						
Transportation Infrastructure Finance and Innovation Fund	.....	.....	.....	(**)	(**)	(**)
Maritime Administration:						
Maritime Guaranteed Loan (Title XI) Fund	.....	(**)	-10	-231	-231	-231
Department of the Treasury:						
Departmental Offices:						
Air Transportation Stabilization Fund	.....	.....	.....	(**)	(**)	(**)
Troubled Assets Insurance Financing Fund	.....	.....	.....	(**)	(**)	(**)
Troubled Asset Relief Program	(**)	4	2	-13	-9	-9
Department of Veterans Affairs:						
Veterans Benefits Administration:						
Veterans Housing Benefit Program Fund	-85	-801	-2,026	-7,735	-8,451	-8,536

**Table 6. Schedule E-Net Activity, Guaranteed and Direct Loan Financing, June 2015 and Other Periods - Continued**

Classification	[\$ millions]					
	Net Transactions (-) denotes net reduction of asset accounts			Account Balances Current Fiscal Year		
	This Month	Fiscal Year to Date		Beginning of		Close of This Month
This Year		Prior Year	This Year	This Month		
<b>Guaranteed Loan Financing Activity: - Continued</b>						
International Assistance Programs:						
Agency for International Development:						
Ukraine Export Credit Insurance Fund	-447	-447	-194	-196	-196	-643
Loan Guarantees to Israel	.....	.....	.....	-1,226	-1,226	-1,226
Urban and Environmental Credit Guaranteed Loans	1	2	3	-56	-54	-54
Microenterprise and Small Enterprise Development	.....	.....	(**)	(**)	(**)	(**)
Development Credit Authority Loan Fund	(**)	-3	-7	-72	-76	-76
Loan Guarantees to Egypt	.....	.....	.....	-481	-481	-481
Tunisia Loan Fund	.....	.....	-122	-253	-253	-253
Overseas Private Investment Corporation	6	-31	-30	149	112	118
Small Business Administration:						
Business Loan Fund	-152	740	245	-2,224	-1,333	-1,485
Independent Agencies:						
Export-Import Bank of the United States	257	239	317	-1,828	-1,846	-1,589
<b>Net Activity, Guaranteed Loan Financing</b>	<b>2,008</b>	<b>2,143</b>	<b>9,827</b>	<b>1,993</b>	<b>2,128</b>	<b>4,136</b>
<b>Direct Loan Financing Activity:</b>						
Department of Agriculture:						
Farm Service Agency:						
Agricultural Credit Insurance Fund	131	524	64	7,452	7,846	7,977
Farm Storage Facility Loans	-3	2	35	776	781	778
Apple Loans Fund	.....	(**)	(**)	(**)	(**)	(**)
Emergency Boll Weevil Loan Fund	.....	4	(**)	1	5	5
Rural Housing Service:						
Rural Community Facility Loans Fund	11	266	115	4,957	5,212	5,223
Rural Housing Insurance Fund	-56	-415	-419	15,265	14,906	14,850
Multifamily Housing Revitalization Loan Account	5	20	4	211	226	231
Rural Business - Cooperative Service:						
Rural Business and Industry Loan Fund	(**)	-1	-1	42	41	41
Rural Development Loan Fund	-2	-15	-14	293	280	278
Rural Economic Development Loan Fund	(**)	14	17	145	158	158
Rural Microenterprise Investment Loans	(**)	4	2	20	24	24
Rural Utilities Service:						
Rural Water and Waste Disposal Loans	-41	-257	-101	10,812	10,597	10,555
Rural Electrification and Telecommunications Fund	-504	-1,788	1,519	50,269	48,985	48,481
Rural Telephone Bank	-3	-31	-40	248	219	217
Distance Learning and Telemedicine Program	14	30	22	1,053	1,068	1,083
Rural Development Insurance Fund	.....	.....	.....	1,065	1,065	1,065
Foreign Agricultural Service:						
P.L. 480 Direct Loan Fund	-1	-73	-151	657	585	584
International Debt Reduction	-1	-5	-6	-5	-10	-10
Department of Commerce:						
National Oceanic and Atmospheric Administration:						
Fisheries Finance	-33	-22	-24	511	523	489
Department of Defense--Military Programs	-6	12	44	1,391	1,408	1,403
Department of Education:						
Office of Postsecondary Education:						
College Housing and Academic Facilities Loans	.....	(**)	-1	4	4	4
Historically Black College and University Capital Financing Fund	23	54	89	1,062	1,094	1,117
Office of Student Financial Assistance:						
Federal Direct Student Loans	-9,906	43,957	61,420	797,552	851,415	841,509
Teach Grant Loans	34	70	53	535	571	605
Temporary Student Loan Purchase Authority	1,323	-6,638	-6,560	101,225	93,264	94,587
Department of Energy:						
Advanced Technology Vehicles Manufacturing Loans	-163	-484	-472	5,029	4,708	4,546
Title 17 Innovative Technology Loans	1,942	1,949	1,393	8,306	8,313	10,255
Department of Health and Human Services:						
Consumer Operated and Oriented Plan	22	198	244	758	934	956
Consumer Operated and Oriented Plan Program Contingency Fund	19	155	21	31	166	186
Department of Homeland Security:						



**Table 6. Schedule E-Net Activity, Guaranteed and Direct Loan Financing, June 2015 and Other Periods - Continued**

Classification	[\$ millions]					
	Net Transactions (-) denotes net reduction of asset accounts			Account Balances Current Fiscal Year		
	This Month	Fiscal Year to Date		Beginning of		Close of This Month
This Year		Prior Year	This Year	This Month		
<b>Direct Loan Financing Activity: - Continued</b>						
Disaster Assistance Loan Fund	-78	-78	12	8	8	-70
Department of Housing and Urban Development:						
Housing Programs:						
Emergency Homeowners' Relief Fund	(**)	(**)	-1	1	1	1
FHA-Mutual Mortgage Insurance Loans	.....	.....	(**)	-6	-6	-6
FHA-General and Special Risk Fund	18	97	.....	(**)	79	97
Green Retrofit Program for Multifamily Housing Fund	(**)	-6	-5	5	(**)	(**)
Department of the Interior:						
Bureau of Reclamation	(**)	-3	-3	35	32	32
Bureau of Indian Affairs and Bureau of Indian Education	(**)	(**)	-1	3	3	3
Assistance to American Samoa Loan Fund	.....	-1	-1	9	9	9
Department of State:						
Administration of Foreign Affairs:						
Repatriation Loans	(**)	-1	-1	1	-1	-1
Department of Transportation:						
Federal Highway Administration:						
Transportation Infrastructure Finance and Innovation Fund	322	-14	872	6,769	6,434	6,756
Tiger Tifia Loan Fund	.....	8	21	569	577	577
Federal Railroad Administration:						
Railroad Rehabilitation and Improvement Loan Fund	-13	25	-2	834	872	859
Department of the Treasury:						
Departmental Offices:						
Community Development Financial Institutions Fund	13	73	14	91	151	164
GSE Mortgage-Backed Securities Purchase Program	.....	.....	.....	4,613	4,613	4,613
Temporary Credit and Liquidity Program	-300	-1,146	-688	7,905	7,059	6,759
Troubled Asset Relief Program	-14	-279	-7,837	696	431	417
Small Business Lending Program	-71	-603	-379	3,174	2,642	2,571
Bureau of the Fiscal Service:						
Financial Management Service	.....	.....	.....	(**)	(**)	(**)
Department of Veterans Affairs:						
Veterans Benefits Administration:						
Veterans Housing Benefit Program Fund	-4	-24	-43	531	511	507
Native American Veteran Housing Fund	(**)	-1	-1	64	62	63
Transitional Housing Loans	(**)	(**)	(**)	(**)	(**)	(**)
Vocational Rehabilitation Loan Fund	(**)	(**)	(**)	1	1	1
Environmental Protection Agency:						
Abatement, Control, and Compliance Loan Program	.....	(**)	(**)	(**)	(**)	(**)
International Assistance Programs:						
International Security Assistance:						
Foreign Military Loan Program	.....	.....	.....	-27	-27	-27
Military Debt Reduction	.....	.....	.....	37	37	37
Agency for International Development:						
International Debt Reduction	-2	-36	-23	93	59	57
Overseas Private Investment Corporation	1	53	-48	1,391	1,443	1,443
International Monetary Programs	(**)	-208	-11	-69	-277	-277
Small Business Administration:						
Business Loan Fund	(**)	7	18	148	155	155
Disaster Loan Fund	-63	-463	-354	5,572	5,172	5,109
Independent Agencies:						
Export-Import Bank of the United States	-890	-229	1,414	19,689	20,350	19,460
Federal Communications Commission:						
Spectrum Auction Loan Fund	(**)	(**)	3	-3	-3	-3
<b>Net Activity, Direct Loan Financing</b>	<b>-8,278</b>	<b>34,701</b>	<b>50,207</b>	<b>1,061,797</b>	<b>1,104,776</b>	<b>1,096,498</b>

Note: Details may not add to totals due to rounding.

Note: Federal credit programs provide benefits to the public in the form of direct loans and loan guarantees. This table reflects cash transactions and balances of the nonbudgetary financing fund accounts that result from the disbursement of loans, collection of fees, repayment of principle, sale of collateral, interest, and subsidy received from the credit program accounts at

net present value in accordance with the Credit Reform Act of 1990. Unreimbursed costs such as administrative expenses and subsidy payments are reported on a cash basis and included within each program's budgetary totals in Table 5.

... No Transactions

(\*\*) Less than absolute value of \$500,000

**Table 7. Receipts and Outlays of the U.S. Government by Month, Fiscal Year 2015**

Classification	[\$ millions]												Fiscal Year to Date	Comparable Period Prior F.Y.	
	Oct.	Nov.	Dec.	Jan.	Feb.	March	April	May	June	July	Aug.	Sept.			
<b>Receipts:</b>															
Individual Income Taxes	106,661	85,958	145,029	177,199	40,614	85,973	288,204	85,035	152,827					1,167,500	1,045,759
Corporation Income Taxes	10,228	2,582	84,231	7,459	-2,866	30,481	43,230	7,340	72,768					255,453	235,018
Social Insurance and Retirement Receipts:															
Employment and General Retirement	70,394	75,868	74,623	94,995	77,210	96,797	106,733	78,965	95,463					771,048	737,295
Unemployment Insurance	3,187	3,214	770	2,519	6,831	454	9,496	15,204	409					42,084	44,613
Other Retirement	293	279	285	338	281	328	301	286	289					2,680	2,572
Excise Taxes	5,915	7,270	6,567	6,689	6,412	6,559	6,172	7,403	7,100					60,087	58,012
Estate and Gift Taxes	1,418	1,508	1,990	1,344	1,008	1,642	3,245	1,703	1,254					15,112	13,935
Customs Duties	3,485	2,964	2,791	3,023	2,525	2,627	3,430	2,548	2,941					26,334	24,725
Miscellaneous Receipts	11,136	11,794	19,040	13,176	7,374	9,327	10,990	13,903	9,882					106,622	98,457
<b>Total--Receipts This Year</b>	<b>212,719</b>	<b>191,436</b>	<b>335,327</b>	<b>306,742</b>	<b>139,388</b>	<b>234,187</b>	<b>471,801</b>	<b>212,386</b>	<b>342,933</b>					<b>2,446,920</b>	.....
<b>(On-Budget)</b>	<b>160,464</b>	<b>135,169</b>	<b>280,293</b>	<b>233,755</b>	<b>79,456</b>	<b>158,782</b>	<b>390,011</b>	<b>151,023</b>	<b>269,307</b>					<b>1,858,261</b>	.....
<b>(Off-Budget)</b>	<b>52,255</b>	<b>56,267</b>	<b>55,034</b>	<b>72,987</b>	<b>59,932</b>	<b>75,405</b>	<b>81,790</b>	<b>61,363</b>	<b>73,626</b>					<b>588,659</b>	.....
<i>Total--Receipts Prior Year</i>	<i>198,927</i>	<i>182,453</i>	<i>285,041</i>	<i>295,997</i>	<i>144,349</i>	<i>215,846</i>	<i>414,237</i>	<i>199,889</i>	<i>323,646</i>					.....	<i>2,260,385</i>
<i>(On-Budget)</i>	<i>148,871</i>	<i>128,657</i>	<i>230,051</i>	<i>226,228</i>	<i>86,974</i>	<i>145,924</i>	<i>335,529</i>	<i>140,789</i>	<i>255,321</i>					.....	<i>1,698,344</i>
<i>(Off-Budget)</i>	<i>50,056</i>	<i>53,796</i>	<i>54,990</i>	<i>69,769</i>	<i>57,375</i>	<i>69,922</i>	<i>78,708</i>	<i>59,100</i>	<i>68,325</i>					.....	<i>562,041</i>
<b>Outlays:</b>															
Legislative Branch	377	336	376	365	305	428	350	320	337					3,197	3,049
Judicial Branch	574	499	629	662	560	610	563	540	585					5,221	5,074
Department of Agriculture:															
Commodity Credit Corporation	3,658	2,161	1,639	817	-217	-54	-276	-216	-287					7,225	9,532
Foreign Agricultural Service	263	46	49	48	154	96	243	98	63					1,060	1,079
Other	12,264	11,621	12,591	11,477	10,949	11,772	10,319	10,236	10,790					102,018	101,340
Department of Commerce	590	752	697	735	680	954	634	694	778					6,515	5,775
Department of Defense--Military Programs:															
Military Personnel	29,402	5,971	15,581	9,933	11,147	6,188	10,636	11,031	10,990					110,879	114,145
Operation and Maintenance	19,800	17,623	20,855	20,520	19,375	21,537	21,594	20,563	20,762					182,628	179,856
International Reconstruction and Other Assistance															
Procurement	7,148	6,878	13,895	5,857	7,142	10,937	7,051	9,489	8,839					77,236	81,805
Research, Development, Test, and Evaluation	4,321	4,528	6,054	4,646	4,444	7,431	5,577	4,867	6,022					47,891	47,654
Military Construction	705	706	892	587	558	697	695	668	711					6,218	7,207
Family Housing	89	83	106	100	80	91	117	73	88					828	971
Revolving and Management Funds	52	-419	319	311	-78	-401	-147	-968	-158					-1,489	1,581
Other	-610	460	-484	-306	-150	51	-82	-91	-172					-1,383	-1,160
<b>Total Department of Defense--Military Programs</b>	<b>60,908</b>	<b>35,829</b>	<b>57,218</b>	<b>41,648</b>	<b>42,517</b>	<b>46,532</b>	<b>45,442</b>	<b>45,632</b>	<b>47,082</b>					<b>422,808</b>	<b>432,060</b>
Department of Education	5,241	4,781	5,504	4,296	8,712	6,925	5,159	5,089	14,706					60,413	46,969
Department of Energy	2,460	1,863	2,259	1,874	1,719	2,208	2,323	1,891	2,279					18,874	17,436
Department of Health and Human Services:															
National Institutes of Health	2,372	2,275	2,498	2,286	2,357	2,395	2,472	2,250	2,494					21,398	22,425
Centers for Medicare and Medicaid Services:															
Grants to States for Medicaid	28,024	24,710	31,494	29,023	27,010	31,756	29,102	28,476	30,708					260,303	218,115
Federal Hospital Insurance Trust Fund	28,507	14,889	23,729	30,792	23,458	17,429	24,163	22,580	22,257					207,803	198,482
Federal Supplementary Medical Insurance Trust Fund	46,802	14,189	28,841	40,329	26,032	15,361	30,688	30,261	28,594					261,098	238,757
Other	31,015	17,213	23,260	29,129	20,207	18,891	33,577	22,720	25,666					221,678	212,152
Administration for Children and Families	3,794	3,662	4,488	4,250	3,843	4,641	3,905	4,103	4,273					36,959	36,501
Other	-34,057	-20,620	-25,707	-32,149	-24,028	-22,106	-40,392	-26,434	-28,956					-254,448	-242,223
Department of Homeland Security	3,965	3,036	4,753	3,178	2,770	4,270	2,666	2,934	3,460					31,033	31,424
Department of Housing and Urban Development	2,840	3,022	2,943	2,744	3,452	3,286	7,301	3,167	2,162					30,917	29,543
Department of the Interior	614	956	944	866	1,232	1,289	858	821	1,319					8,899	8,373
Department of Justice	-6,301	2,665	8,825	819	3,575	3,020	2,218	2,395	1,882					19,099	20,924
Department of Labor:															
Unemployment Trust Fund	2,972	1,882	4,000	3,563	3,377	3,682	3,137	2,903	2,885					28,402	37,442
Other	-2,997	1,413	1,265	1,483	1,139	508	1,390	797	963					5,962	6,900
Department of State	1,933	2,410	2,601	1,742	1,702	2,339	1,747	1,321	1,960					17,756	19,015
Department of Transportation:															
Highway Trust Fund	4,291	3,106	3,089	2,254	2,375	2,460	2,340	3,223	3,901					27,040	28,658
Other	2,436	2,640	2,765	2,309	2,462	3,257	2,607	2,707	2,700					23,883	24,645
Department of the Treasury:															
Interest on Treasury Debt Securities (Gross)	8,702	23,427	86,460	15,105	13,153	13,889	31,782	32,693	93,014					318,225	353,620

**Table 7. Receipts and Outlays of the U.S. Government by Month, Fiscal Year 2015 - Continued**

Classification	[\$ millions]												Fiscal Year to Date	Comparable Period Prior F.Y.	
	Oct.	Nov.	Dec.	Jan.	Feb.	March	April	May	June	July	Aug.	Sept.			
<b>Outlays: - Continued</b>															
Other	4,563	3,566	-3,429	13,092	48,729	18,697	14,256	6,452	1,923					107,850	38,197
<b>Department of Veterans Affairs:</b>															
Compensation and Pensions	11,395	570	11,510	6,130	6,201	984	6,376	6,331	6,408					55,906	51,872
National Service Life	82	56	88	74	75	89	95	75	67					701	688
Other	7,314	5,292	7,249	8,017	6,697	6,682	6,880	6,488	6,423					61,041	58,324
Corps of Engineers	682	367	684	513	520	574	575	510	533					4,958	4,875
Other Defense Civil Programs	11,057	761	10,213	6,164	5,752	2,142	3,518	4,457	5,002					49,066	43,197
Environmental Protection Agency	835	829	853	803	-650	609	377	479	726					4,860	6,378
Executive Office of the President	27	29	33	40	30	35	34	-11,472	11,531					289	270
General Services Administration	-19	-218	3	-223	-144	133	-384	136	-41					-757	-260
<b>International Assistance Programs:</b>															
International Security Assistance	722	1,525	1,156	2,769	519	1,228	469	453	644					9,486	9,381
Multilateral Assistance	437	182	65	-7	1,958	344	141	24	2					3,145	2,316
Agency for International Development	813	415	491	353	409	574	658	640	865					5,218	4,000
Other	106	75	607	516	-238	310	-869	-118	-250					139	-639
National Aeronautics and Space Administration	1,415	1,330	2,329	1,276	1,208	1,543	1,294	1,232	1,937					13,564	12,480
National Science Foundation	477	474	503	483	495	538	551	531	613					4,666	4,796
Office of Personnel Management	8,202	7,066	7,358	7,280	8,317	7,462	8,166	7,166	5,997					67,014	65,559
Small Business Administration	58	65	69	64	-1,550	85	69	59	79					-1,001	-42
<b>Social Security Administration:</b>															
Federal Old-Age and Survivors Insurance Trust Fund (Off-Budget)	59,677	59,724	60,513	61,187	61,344	61,653	61,740	62,168	66,304					554,310	527,784
Federal Disability Insurance Trust Fund (Off-Budget)	11,988	11,959	11,921	12,265	12,012	12,238	12,370	12,326	12,569					109,648	108,398
Other	8,977	178	9,186	4,679	4,651	401	4,648	4,879	4,576					42,175	41,252
<b>Independent Agencies:</b>															
Deposit Insurance Fund	-166	191	-1,998	263	-1,530	-1,209	-1,452	-553	-2,202					-8,656	-9,503
FSLIC Resolution Fund	(**)	(**)	(**)	(**)	(**)	(**)	(**)	(**)	(**)					2	-2
<b>Postal Service:</b>															
<b>Off-Budget:</b>															
Public Enterprise Funds	-20	-487	-1,739	1,031	10	-191	-764	-1,550	-442					-4,152	-2,806
Other	50	(**)	.....	208	(**)	.....	.....	(**)	.....					259	256
Other	71	.....	.....	.....	29	.....	.....	.....	.....					100	78
Tennessee Valley Authority	176	21	294	-165	-180	19	317	-5	142					619	-1,191
Other	3,369	2,254	2,117	2,958	3,285	972	2,570	1,994	-1,910					17,609	13,687
<b>Undistributed Offsetting Receipts:</b>															
Employer Share, Employee Retirement	-18,819	-5,325	-5,376	-5,306	-5,963	-5,950	-5,663	-5,598	-5,456					-63,456	-62,424
Interest Received by Trust Funds	10,288	-1,472	-67,500	242	531	1,778	-4,874	-3,452	-69,213					-133,674	-152,060
Rents and Royalties on the Outer Continental Shelf Lands	-574	63	-946	-64	-275	-475	-324	-82	-1,155					-3,832	-5,678
Other	(**)	(**)	(**)	.....	.....	.....	(**)	(**)	-30,128					-30,128	(**)
<b>Totals This Year:</b>															
<b>Total Outlays</b>	<b>334,432</b>	<b>248,254</b>	<b>333,463</b>	<b>324,289</b>	<b>331,738</b>	<b>287,105</b>	<b>315,092</b>	<b>294,771</b>	<b>291,157</b>					<b>2,760,301</b>	<b>.....</b>
<b>(On-Budget)</b>	<b>271,514</b>	<b>178,516</b>	<b>311,588</b>	<b>257,510</b>	<b>259,778</b>	<b>214,910</b>	<b>251,497</b>	<b>223,306</b>	<b>261,815</b>					<b>2,230,434</b>	<b>.....</b>
<b>(Off-Budget)</b>	<b>62,918</b>	<b>69,738</b>	<b>21,875</b>	<b>66,779</b>	<b>71,960</b>	<b>72,195</b>	<b>63,595</b>	<b>71,465</b>	<b>29,342</b>					<b>529,867</b>	<b>.....</b>
<b>Total-Surplus (+) or Deficit (-)</b>	<b>-121,713</b>	<b>-56,818</b>	<b>1,864</b>	<b>-17,546</b>	<b>-192,350</b>	<b>-52,918</b>	<b>156,709</b>	<b>-82,385</b>	<b>51,776</b>					<b>-313,381</b>	<b>.....</b>
<b>(On-Budget)</b>	<b>-111,050</b>	<b>-43,347</b>	<b>-31,295</b>	<b>-23,755</b>	<b>-180,321</b>	<b>-56,128</b>	<b>138,514</b>	<b>-72,283</b>	<b>7,492</b>					<b>-372,173</b>	<b>.....</b>
<b>(Off-Budget)</b>	<b>-10,663</b>	<b>-13,471</b>	<b>33,159</b>	<b>6,208</b>	<b>-12,028</b>	<b>3,210</b>	<b>18,195</b>	<b>-10,102</b>	<b>44,284</b>					<b>58,792</b>	<b>.....</b>
<b>Total Borrowing from the Public</b>	<b>74,090</b>	<b>64,849</b>	<b>101,554</b>	<b>-36,839</b>	<b>88,293</b>	<b>15,323</b>	<b>-36,024</b>	<b>-1,138</b>	<b>20,862</b>					<b>290,971</b>	<b>586,593</b>
<b>Total-Outlays Prior Year</b>															
<i>(On-Budget)</i>	289,511	317,679	231,821	306,247	337,880	252,741	307,383	329,860	253,127					.....	2,626,250
<i>(Off-Budget)</i>	225,419	250,867	214,255	244,403	269,430	183,532	245,856	260,468	228,600					.....	2,122,829
<i>(Off-Budget)</i>	64,093	66,813	17,566	61,844	68,450	69,208	61,527	69,392	24,528					.....	503,421
<b>Total-Surplus (+) or Deficit (-) Prior Year</b>															
<i>(On-Budget)</i>	-90,584	-135,226	53,220	-10,250	-193,532	-36,895	106,853	-129,971	70,519					.....	-365,865
<i>(Off-Budget)</i>	-76,547	-122,210	15,796	-18,174	-182,457	-37,608	89,673	-119,679	26,721					.....	-424,485
<i>(Off-Budget)</i>	-14,037	-13,017	37,424	7,925	-11,075	713	17,181	-10,292	43,798					.....	58,620

Note: Details may not add to totals due to rounding.  
... No Transactions

(\*\*) Less than absolute value of \$500,000

**Table 8. Trust Fund Impact on Budget Results and Investment Holdings as of June 30, 2015**

[\$ millions]

Classification	This Month			Fiscal Year to Date			Securities Held as Investments Current Fiscal Year		
	Receipts	Outlays	Excess	Receipts	Outlays	Excess	Beginning of		Close of
							This Year	This Month	
<b>Trust Receipts, Outlays, and Investments Held:</b>									
Airport and Airway	1,311	1,995	-684	10,105	10,059	46	12,759	14,337	13,690
Black Lung Disability	47	19	29	409	207	202	.....	.....	.....
Federal Disability Insurance	12,034	12,569	-535	90,522	109,648	-19,126	70,113	51,521	50,975
Federal Employees Life and Health	.....	257	-257	.....	-228	228	66,771	67,237	66,983
Federal Employees Retirement	17,269	5,592	11,677	53,204	60,741	-7,538	876,056	837,064	772,662
Federal Hospital Insurance	30,474	22,389	8,084	212,647	208,984	3,663	202,207	196,937	205,355
Federal Old-Age and Survivors Insurance	110,681	66,304	44,377	628,334	554,310	74,024	2,712,805	2,742,560	2,786,859
Federal Supplementary Medical Insurance	28,494	28,594	-101	258,154	261,098	-2,943	68,391	68,769	68,642
Hazardous Substance Superfund	3	94	-91	1,255	-771	2,026	3,446	4,024	3,938
Highways	3,222	4,832	-1,609	27,614	34,011	-6,397	10,696	8,297	6,769
Military Advances	3,671	3,446	224	21,862	20,291	1,571	.....	.....	.....
Military Retirement	2,701	4,737	-2,036	91,985	42,489	49,496	483,111	534,664	532,242
Railroad Retirement	4,911	1,272	3,638	11,022	10,143	879	2,673	2,610	2,751
Unemployment	964	2,892	-1,928	43,626	28,470	15,156	35,919	49,971	44,388
Veterans Life Insurance	117	48	69	292	794	-501	7,500	6,907	6,972
All Other Trust	18,967	465	18,502	24,012	3,576	20,436	24,285	25,231	25,102
<b>Total Trust Fund Receipts and Outlays and Investments Held from Table 6-D</b>	<b>234,866</b>	<b>155,506</b>	<b>79,360</b>	<b>1,475,044</b>	<b>1,343,822</b>	<b>131,222</b>	<b>4,576,733</b>	<b>4,610,132</b>	<b>4,587,329</b>
Less: Interfund Transactions	133,983	133,983	.....	618,018	618,018	.....	.....	.....	.....
Trust Fund Receipts and Outlays on the Basis of Tables 4 & 5	100,883	21,523	79,360	857,025	725,803	131,222			
<b>Total Federal Fund Receipts and Outlays</b>	<b>242,214</b>	<b>269,798</b>	<b>-27,584</b>	<b>1,590,587</b>	<b>2,035,190</b>	<b>-444,603</b>			
Less: Interfund Transactions	164	164	.....	693	693	.....			
Federal Fund Receipts and Outlays on the Basis of Table 4 & 5	242,050	269,634	-27,584	1,589,895	2,034,498	-444,603			
<b>Net Budget Receipts &amp; Outlays</b>	<b>342,933</b>	<b>291,157</b>	<b>51,776</b>	<b>2,446,920</b>	<b>2,760,301</b>	<b>-313,381</b>			

Note: Details may not add to totals due to rounding.

Note: Interfund receipts and outlays are transactions between Federal funds and trust funds such as Federal payments and contributions, and interest and profits on investments in Federal securities. They have no net effect on overall budget

receipts and outlays since the receipt side of such transactions is offset against budget outlays. In this table, Interfund receipts are shown as an adjustment to arrive at total receipts and outlays of trust funds respectively.  
... No Transactions

**Table 9. Summary of Receipts by Source, and Outlays by Function of the U.S. Government, June 2015 and Other Periods**

[\$ millions]			
Classification	This Month	Fiscal Year to Date	Comparable Period Prior Fiscal Year
<b>Receipts</b>			
Individual Income Taxes	152,827	1,167,500	1,045,759
Corporation Income Taxes	72,768	255,453	235,018
Social Insurance and Retirement Receipts:			
Employment and General Retirement	95,463	771,048	737,295
Unemployment Insurance	409	42,084	44,613
Other Retirement	289	2,680	2,572
Excise Taxes	7,100	60,087	58,012
Estate and Gift Taxes	1,254	15,112	13,935
Customs Duties	2,941	26,334	24,725
Miscellaneous Receipts	9,882	106,622	98,457
<b>Total</b>	<b>342,933</b>	<b>2,446,920</b>	<b>2,260,385</b>
<b>Net Outlays</b>			
National Defense	49,317	444,385	452,244
International Affairs	3,503	36,523	34,682
General Science, Space, and Technology	2,886	21,427	20,606
Energy	897	5,363	3,311
Natural Resources and Environment	3,140	24,191	25,220
Agriculture	428	20,197	24,242
Commerce and Housing Credit	5,026	-24,418	-87,421
Transportation	7,915	61,841	64,874
Community and Regional Development	1,643	15,903	15,829
Education, Training, Employment, and Social Services	16,819	84,242	70,369
Health	42,084	351,362	296,668
Medicare	43,895	403,051	373,107
Income Security	30,958	400,166	407,323
Social Security	78,874	663,942	636,182
Veterans Benefits and Services	12,938	118,022	111,283
Administration of Justice	4,413	39,311	38,187
General Government	812	10,375	15,883
Net Interest	22,348	181,833	191,761
Undistributed Offsetting Receipts	-36,739	-97,415	-68,102
<b>Total</b>	<b>291,157</b>	<b>2,760,301</b>	<b>2,626,250</b>

Note: Details may not add to totals due to rounding.

# Explanatory Notes

## 1. Flow of Data into Monthly Treasury Statement

The *Monthly Treasury Statement (MTS)* is assembled from data in the central accounting system. The major sources of data include monthly accounting reports by Federal entities and disbursing officers, and daily reports from the Federal Reserve banks. These reports detail accounting transactions affecting receipts and outlays of the Federal Government and off-budget Federal entities, and their related effect on the assets and liabilities of the U.S. Government. Information is presented in the *MTS* on a modified cash basis.

## 2. Notes on Receipts

Receipts included in the report are classified into the following major categories: (1) budget receipts and (2) offsetting collections (also called applicable receipts). Budget receipts are collections from the public that result from the exercise of the Government's sovereign or governmental powers, excluding receipts offset against outlays. These collections, also called governmental receipts, consist mainly of tax receipts (including social insurance taxes), receipts from court fines, certain licenses, and deposits of earnings by the Federal Reserve System. Refunds of receipts are treated as deductions from gross receipts.

Offsetting collections are from other Government accounts or the public that are of a business-type or market-oriented nature. They are classified into two major categories: (1) offsetting collections credited to appropriations or fund accounts, and (2) offsetting receipts (i.e., amounts deposited in receipt accounts). Collections credited to appropriation or fund accounts normally can be used without appropriation action by Congress. These occur in two instances: (1) when authorized by law, amounts collected for materials or services are treated as reimbursements to appropriations and (2) in the three types of revolving funds (public enterprise, intra governmental, and trust); collections are netted against spending, and outlays are reported as the net amount.

Offsetting receipts in receipt accounts cannot be used without being appropriated. They are subdivided into two categories: (1) proprietary receipts - these collections are from the public and they are offset against outlays by agency and by function, and (2) intra governmental funds - these are payments into receipt accounts from Governmental appropriation or fund accounts. The transactions may be intrabudgetary when the payment and receipt both occur within the budget or from receipts from off-budget Federal entities in those cases where payment is made by a Federal entity whose budget authority and outlays are excluded from the budget totals.

Intrabudgetary transactions are subdivided into three categories: (1) interfund transactions, where the payments are from one fund group (either Federal funds or trust funds) to a receipt account in the other fund group; (2) Federal intrafund transactions, where the payments and receipts both occur within the Federal fund group; and (3) trust intrafund transactions, where the payments and receipts both occur within the trust fund group.

Offsetting receipts are generally deducted from budget authority and outlays by function, by subfunction, or by agency. There are four types of receipts, however, that are deducted from budget totals as undistributed offsetting receipts. They are: (1) agencies' payments (including payments by off-budget Federal entities) as employers into employees retirement funds, (2) interest received by trust funds, (3) rents and royalties on the Outer Continental Shelf lands, and (4) other interest (i.e., interest collected on Outer Continental Shelf money in deposit funds when such money is transferred into the budget).

## 3. Notes on Outlays

Outlays are generally accounted for on the basis of checks issued, electronic funds transferred, or cash payments made. Certain outlays do not require issuance of cash or checks. An example is charges made against appropriations for that part of employees' salaries withheld for taxes or savings bond allotments - these are counted as payments to the employee and credits for whatever purpose the money was withheld. Outlays are stated net of offsetting collections (including receipts of revolving and management funds) and of refunds. Interest on the public debt (public issues) is recognized on the accrual basis. Federal credit programs subject to the Federal Credit Reform Act of 1990 use the cash

basis of accounting and are divided into two components. The portion of the credit activities that involve a cost to the Government (mainly subsidies) is included within the budget program accounts. The remaining portion of the credit activities are in non-budget financing accounts. Outlays of off-budget Federal entities are excluded by law from budget totals. However, they are shown separately and combined with the on-budget outlays to display total Federal outlays.

## 4. Processing

The data on payments and collections are reported by account symbol into the central accounting system. In turn, the data are extracted from this system for use in the preparation of the *MTS*.

There are two major checks which are conducted to assure consistency of the data reported:

1. Verification of payment data. The monthly payment activity reported by Federal entities on the Statements of Transactions is compared to the payment activity of Federal entities as reported by disbursing officers.
2. Verification of collection data. Reported collections appearing on Statements of Transactions are compared to deposits as reported by Federal Reserve Banks.

## 5. Other Sources of Information About Federal Government Financial Activities

- *A Glossary of Terms Used in the Federal Budget Process, 2005* (Available from the U.S. Government Accountability Office, at calling 202-512-6000. This glossary provides a basic reference document of standardized definitions of terms used by the Federal Government in the budget making process).
- *Daily Treasury Statement* (Available on the internet at <http://www.fms.treas.gov/dts/>). The *Daily Treasury Statement* is published each working day of the Federal Government and provides data on the cash and debt operations of the Treasury.
- *Monthly Statement of the Public Debt of the United States* (Available on the internet at <http://www.treasurydirect.gov/govt/reports/pd/mspd/mspd.htm>). This publication provides detailed information concerning the public debt.
- *Treasury Bulletin* (Available from GPO, Washington, D.C. 20401 on a subscription or single copy and on the internet at [http://www.fiscal.treasury.gov/fsreports/rpt/treasBulletin/treasBulletin\\_home.htm](http://www.fiscal.treasury.gov/fsreports/rpt/treasBulletin/treasBulletin_home.htm)). Quarterly, contains a mix of narrative, tables, and charts on Treasury issues, Federal financial operations, international statistics, and special reports.
- *Budget of the United States Government, Fiscal Year 20\_\_* (Available from GPO, Washington, D.C. 20401 on a subscription basis only and on the internet at <http://www.access.gpo.gov/usbudget>). This publication is a single volume which provides budget information and contains:
  - *Appendix, The Budget of the United States Government, FY 20\_\_*
  - *The United States Budget in Brief, FY 20\_\_*
  - *Analytical Perspectives*
  - *Historical Tables*
- *Combined Statement of Receipts, Outlays, and Balances of the United States Government* (Available from Bureau of the Fiscal Service, U.S. Department of Treasury, Washington, D.C. 20227 and on the internet at [http://www.fiscal.treasury.gov/fsreports/rpt/combStmt/combStmt\\_home.htm](http://www.fiscal.treasury.gov/fsreports/rpt/combStmt/combStmt_home.htm)). This report includes budgetary results at the summary level and presents individual receipt and appropriation accounts at the detail level.

**Scheduled Release**

**The release date for the July 2015 Statement  
will be 2:00 p.m. EST August 12, 2015.**

Internet service subscribers can access the current issue of the Monthly Treasury Statement through the  
Bureau of the Fiscal Service's website:

[http://www.fiscal.treasury.gov/fsreports/rpt/mthTreasStmnt/mthTreasStmnt\\_home.htm](http://www.fiscal.treasury.gov/fsreports/rpt/mthTreasStmnt/mthTreasStmnt_home.htm)