



# Monthly Treasury Statement

of Receipts and Outlays  
of the United States Government

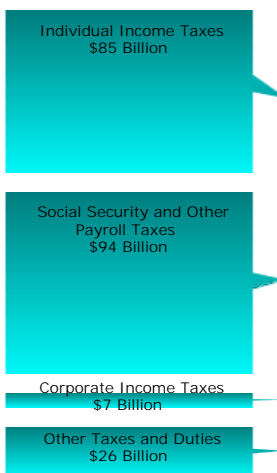
For Fiscal Year 2015 Through **May 31, 2015**, and Other Periods

## Highlight

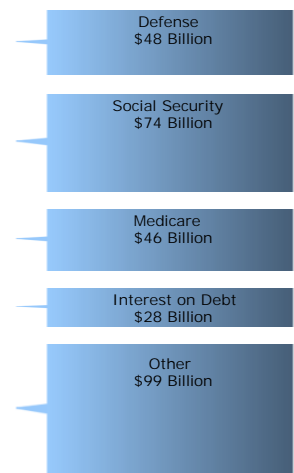
**The interest on Treasury debt securities is \$28 billion, which is 10 percent of the total current month federal outlays.**

### Receipts, Outlays, and Surplus/Deficit for May 2015

Receipts by Source:



Outlays by Function:

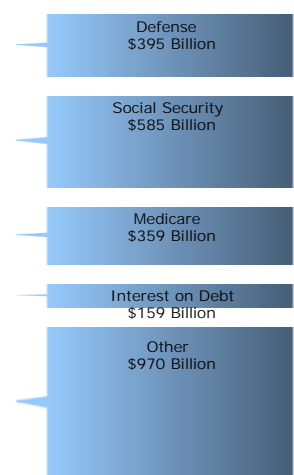


### Cumulative Receipts, Outlays, and Surplus/Deficit through Fiscal Year 2015

Receipts by Source:



Outlays by Function:



Compiled and Published by

*Department of the Treasury*  
**Bureau of the Fiscal Service**

<b>Contents</b>			
Summary	Page 2	Receipts/Outlays by Month	Page 31
Receipts	Page 6	Federal Trust Funds/Securities	Page 33
Outlays	Page 7	Receipts by Source/Outlays by Function	Page 34
Means of Financing	Page 21	Explanatory Notes	Page 35

## Introduction

The *Monthly Treasury Statement of Receipts and Outlays of the United States Government (MTS)* is prepared by the Bureau of the Fiscal Service, Department of the Treasury, and after approval by the Fiscal Assistant Secretary of the Treasury; is normally released on the 8th workday of the month following the reporting month. The publication is based on data provided by Federal entities, disbursing officers, and Federal Reserve banks.

### AUDIENCE

The *MTS* is published to meet the needs of those responsible for or interested in the cash position of the Treasury, those who are responsible or interested in the Government's budget results; and individuals and businesses whose operations depend upon or are related to the Government's financial operations.

### DISCLOSURE STATEMENT

This statement summarizes the financial activities of the Federal Government and off-budget Federal entities conducted in accordance with the Budget of the U.S. Government, i.e., receipts and outlays of funds, the surplus or deficit, and the means of financing the deficit or disposing of the surplus. Information is presented on a modified cash basis; receipts are accounted for on the basis of collections; refunds of receipts are treated as deductions from gross receipts; revolving and

management fund receipts, reimbursements and refunds of monies previously expended are treated as deductions from gross outlays; and interest on the public debt (public issues) is recognized on the accrual basis. Major information sources include accounting data reported by Federal entities, disbursing officers, and Federal Reserve banks.

### TRIAD OF PUBLICATIONS

The *MTS* is part of a triad of Treasury financial reports. The *Daily Treasury Statement* is published each working day of the Federal Government. It provides data on the cash and debt operations of the Treasury based upon reporting of the Treasury account balances by Federal Reserve banks. The *MTS* is a report of Government receipts and outlays, based on agency reporting. The *Combined Statement of Receipts, Outlays, and Balances of the United States Government* is the official publication of the detailed receipts and outlays of the Government. It is published annually in accordance with legislative mandates given to the Secretary of the Treasury.

### DATA SOURCES AND INFORMATION

The Explanatory Notes section of this publication provides information concerning the flow of data into the *MTS* and sources of information relevant to the *MTS*.

**Table 1. Summary of Receipts, Outlays, and the Deficit/Surplus of the U.S. Government, Fiscal Years 2014 and 2015, by Month**

Period	[\$ millions]		
	Receipts	Outlays	Deficit/Surplus (-)
<b>FY 2014</b>			
October	198,927	289,511	90,584
November	182,453	317,679	135,226
December	285,041	231,821	-53,220
January	295,997	306,247	10,250
February	144,349	337,880	193,532
March	215,846	252,741	36,895
April	414,237	307,383	-106,853
May	199,889	329,860	129,971
June	323,646	253,127	-70,519
July	214,493	309,113	94,621
August	194,248	322,925	128,677
September	351,245	245,441	-105,803
<b>Year-to-Date</b>	<b>3,020,371</b>	<b>3,503,730</b>	<b>483,359</b>
<b>FY 2015</b>			
October	212,719	334,432	121,713
November	191,436	248,254	56,818
December	335,327	333,463	-1,864
January	306,742	324,289	17,546
February	139,388	331,738	192,350
March	234,187	287,105	52,918
April	471,801	315,092	-156,709
May	212,386	294,771	82,385
<b>Year-to-Date</b>	<b>2,103,987</b>	<b>2,469,144</b>	<b>365,156</b>

1 Outlays have been increased by \$5 million to reflect additional reporting by the Department of Transportation, Maritime Administration.

Note: Details may not add to totals due to rounding.

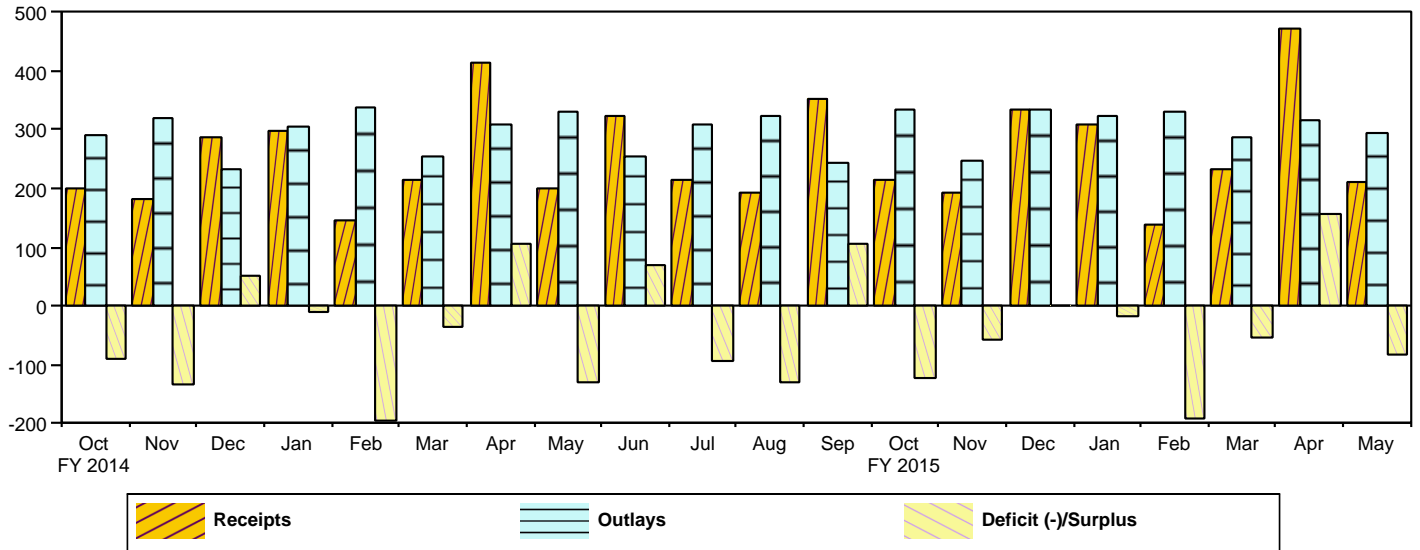
**Table 2. Summary of Budget and Off-Budget Results and Financing of the U.S. Government, May 2015 and Other Periods**

[\$ millions]					
Classification	This Month	Current Fiscal Year to Date	Budget Estimates Full Fiscal Year <sup>1</sup>	Comparable Prior Period Year to Date (2014)	Budget Estimates Next Fiscal Year (2016) <sup>1</sup>
<b>Total On-Budget and Off-Budget Results:</b>					
Total Receipts	212,386	2,103,987	3,176,072	1,936,739	3,525,179
On-Budget Receipts	151,023	1,588,954	2,410,502	1,443,023	2,724,214
Off-Budget Receipts	61,363	515,033	765,570	493,716	800,965
Total Outlays	294,771	2,469,144	3,758,577	2,373,122	3,999,467
On-Budget Outlays	223,306	1,968,619	3,005,957	1,894,229	3,201,064
Off-Budget Outlays	71,465	500,525	752,620	478,894	798,403
Total Surplus (+) or Deficit (-)	-82,385	-365,156	-582,505	-436,384	-474,288
On-Budget Surplus (+) or Deficit (-)	-72,283	-379,665	-595,455	-451,206	-476,850
Off-Budget Surplus (+) or Deficit (-)	-10,102	+14,508	+12,950	+14,822	+2,562
Total On-Budget and Off-Budget Financing	82,385	365,156	582,505	436,384	474,288
<b>Means of Financing:</b>					
Borrowing from the Public	-1,138	270,109	726,454	552,217	602,161
Reduction of Operating Cash, Increase (-)	74,922	-40,645	-41,698	59,492	
By Other Means	8,601	135,693	-102,251	-175,326	-127,873

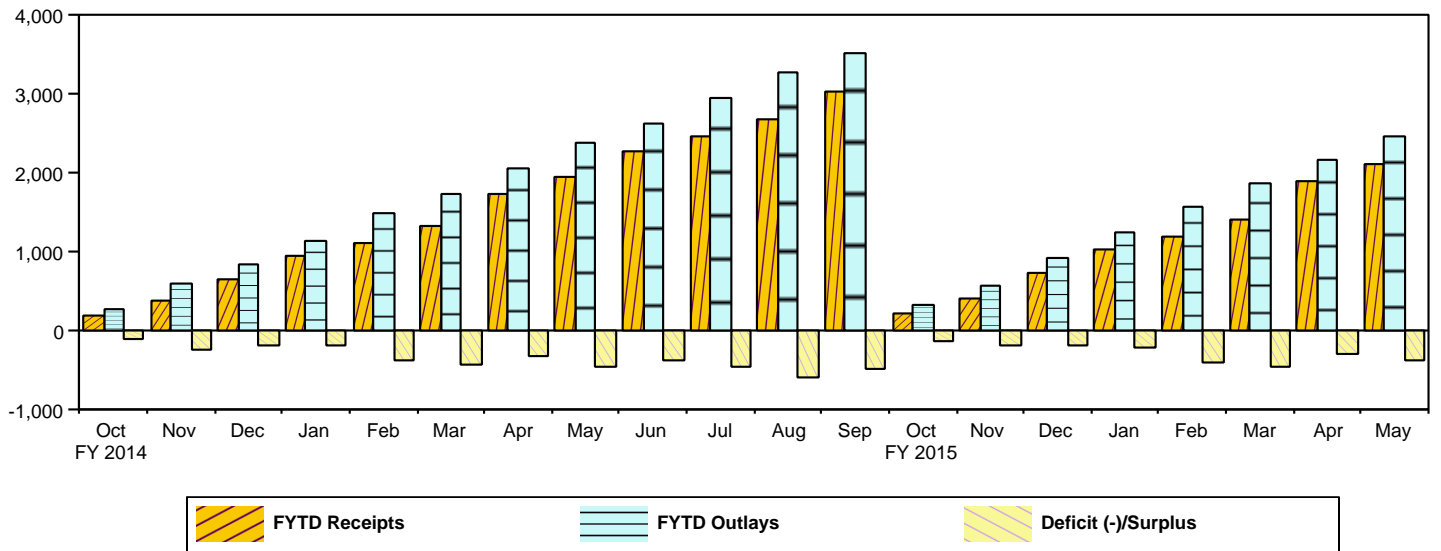
<sup>1</sup> These estimates are based on the FY 2016 Budget, released by the Office of Management and Budget on February 2, 2015

Note: Details may not add to totals due to rounding.

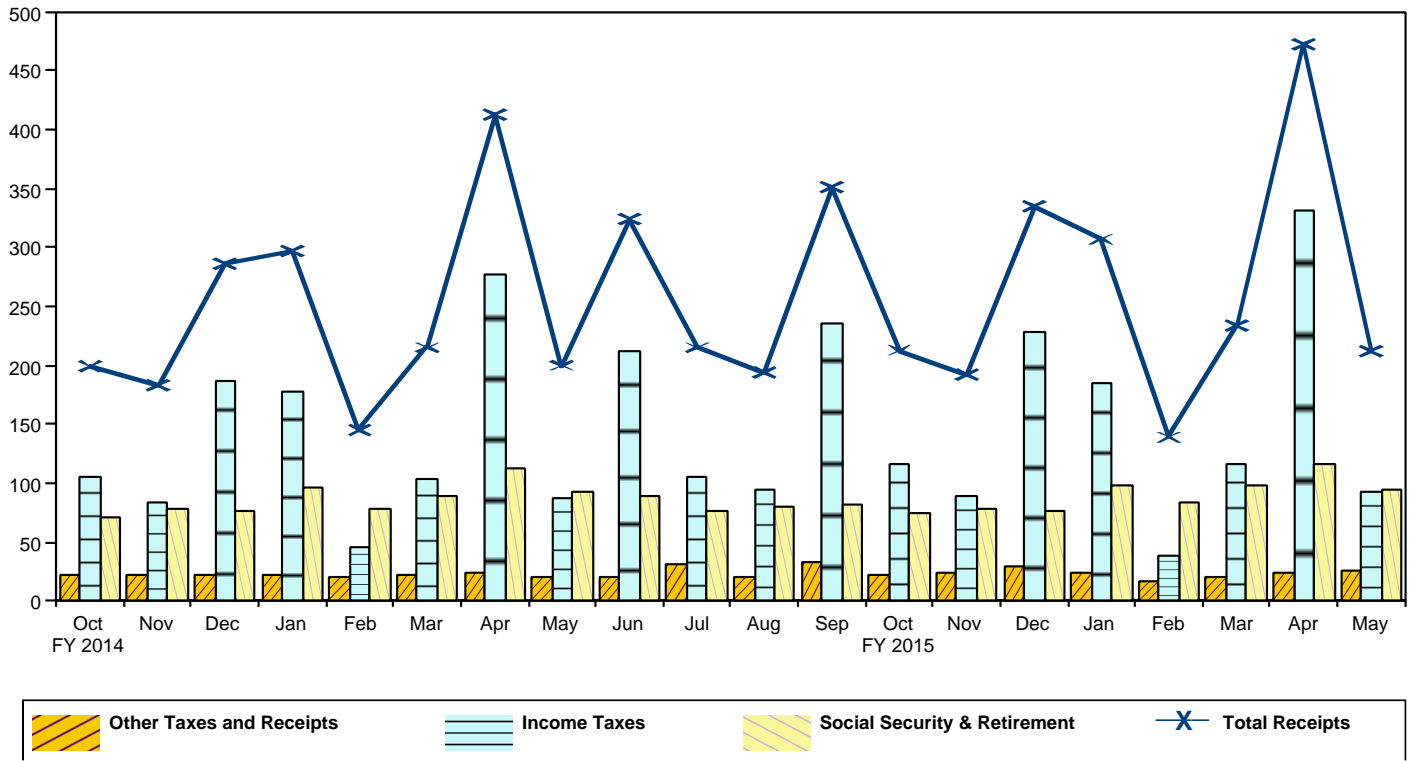
**Figure 1. Monthly Receipts, Outlays, and Budget Deficit/Surplus of the U.S. Government, Fiscal Years 2014 and 2015**  
[\$ billions]



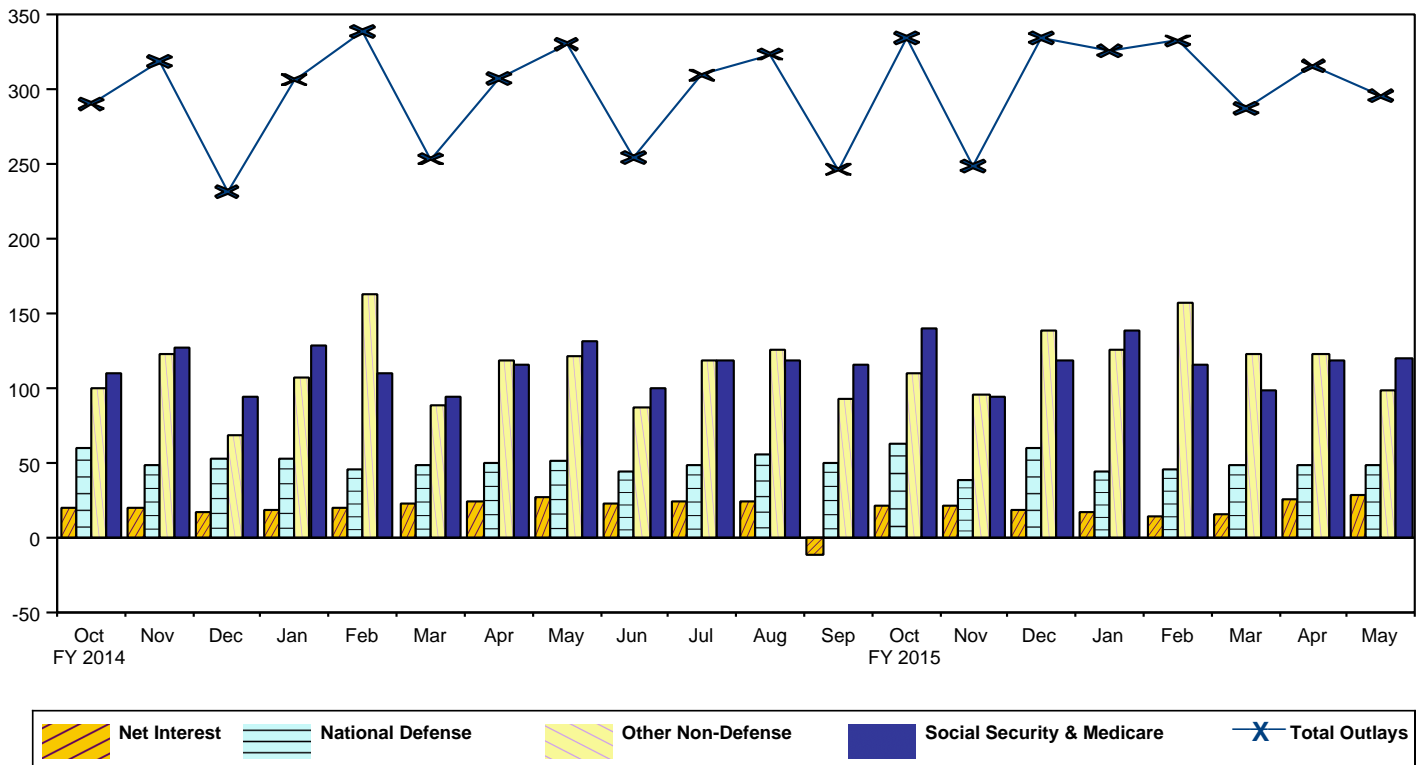
**Figure 2. Monthly Receipts, Outlays, and Budget Deficit/Surplus of the U.S. Government, Cumulative, Fiscal Years 2014 and 2015**  
[\$ billions]



**Figure 3. Monthly Receipts of the U.S. Government, by Source, Fiscal Years 2014 and 2015**  
[\$ billions]



**Figure 4. Monthly Outlays of the U.S. Government, by Function, Fiscal Years 2014 and 2015**  
[\$ billions]



**Table 3. Summary of Receipts and Outlays of the U.S. Government, May 2015 and Other Periods**

[\$ millions]				
Classification	This Month	Current Fiscal Year to Date	Comparable Prior Period Year to Date	Budget Estimates Full Fiscal Year <sup>1</sup>
<b>Budget Receipts</b>				
Individual Income Taxes	85,035	1,014,673	903,024	1,478,076
Corporation Income Taxes	7,340	182,685	164,840	341,688
Social Insurance and Retirement Receipts:				
Employment and General Retirement (Off-Budget)	61,363	515,033	493,716	765,570
Employment and General Retirement (On-Budget)	17,602	160,552	155,027	239,431
Unemployment Insurance	15,204	41,675	43,231	56,351
Other Retirement	286	2,391	2,294	3,660
Excise Taxes	7,403	52,987	51,563	95,898
Estate and Gift Taxes	1,703	13,858	12,582	19,738
Customs Duties	2,548	23,393	22,125	36,762
Miscellaneous Receipts	13,903	96,740	88,337	138,898
<b>Total Receipts</b>	<b>212,386</b>	<b>2,103,987</b>	<b>1,936,739</b>	<b>3,176,072</b>
<b>(On-Budget)</b>	<b>151,023</b>	<b>1,588,954</b>	<b>1,443,023</b>	<b>2,410,502</b>
<b>(Off-Budget)</b>	<b>61,363</b>	<b>515,033</b>	<b>493,716</b>	<b>765,570</b>
<b>Budget Outlays</b>				
Legislative Branch	320	2,859	2,724	4,899
Judicial Branch	540	4,636	4,496	7,567
Department of Agriculture	10,118	99,738	100,695	147,536
Department of Commerce	694	5,737	5,144	9,971
Department of Defense--Military Programs	45,632	375,726	390,300	567,702
Department of Education	5,089	45,707	36,000	103,288
Department of Energy	1,891	16,596	15,543	30,140
Department of Health and Human Services	83,956	669,755	623,990	1,012,950
Department of Homeland Security	2,934	27,573	27,798	45,685
Department of Housing and Urban Development	3,167	28,755	26,410	42,390
Department of the Interior	821	7,580	7,193	13,008
Department of Justice	2,395	17,217	18,978	36,087
Department of Labor	3,700	30,516	40,470	52,797
Department of State	1,321	15,795	17,191	30,521
Department of Transportation	5,930	44,322	45,766	80,208
Department of the Treasury:				
Interest on Treasury Debt Securities (Gross)	32,693	225,211	256,054	431,591
Other	6,451	105,926	43,600	74,784
Department of Veterans Affairs	12,894	104,750	104,682	160,797
Corps of Engineers	510	4,424	4,387	7,463
Other Defense Civil Programs	4,457	44,064	42,701	59,725
Environmental Protection Agency	479	4,134	5,581	8,325
Executive Office of the President	-11,472	-11,242	244	401
General Services Administration	136	-715	-107	-1,178
International Assistance Programs	999	16,727	12,515	24,006
National Aeronautics and Space Administration	1,232	11,627	11,069	18,097
National Science Foundation	531	4,053	4,184	7,082
Office of Personnel Management	7,166	61,017	58,826	94,672
Small Business Administration	59	-1,080	-121	-571
Social Security Administration	79,373	622,683	601,322	953,781
Independent Agencies	-115	10,190	5,774	19,707
Allowances	.....	.....	.....	1,875
Undistributed Offsetting Receipts:				
Interest	-3,452	-64,460	-79,194	-150,911
Other	-5,679	-60,677	-61,094	-135,818
<b>Total Outlays</b>	<b>294,771</b>	<b>2,469,144</b>	<b>2,373,122</b>	<b>3,758,577</b>
<b>(On-Budget)</b>	<b>223,306</b>	<b>1,968,619</b>	<b>1,894,229</b>	<b>3,005,957</b>
<b>(Off-Budget)</b>	<b>71,465</b>	<b>500,525</b>	<b>478,894</b>	<b>752,620</b>
<b>Surplus (+) or Deficit (-)</b>	<b>-82,385</b>	<b>-365,156</b>	<b>-436,384</b>	<b>-582,505</b>
<b>(On-Budget)</b>	<b>-72,283</b>	<b>-379,665</b>	<b>-451,206</b>	<b>-595,455</b>
<b>(Off-Budget)</b>	<b>-10,102</b>	<b>+14,508</b>	<b>+14,822</b>	<b>+12,950</b>

<sup>1</sup> These estimates are based on the FY 2016 Budget, released by the Office of Management and Budget on February 2, 2015

Note: Details may not add to totals due to rounding.  
... No Transactions

**Table 4. Receipts of the U.S. Government, May 2015 and Other Periods**

Classification	This Month			Current Fiscal Year to Date			Prior Fiscal Year to Date		
	Gross Receipts	Refunds (Deduct)	Receipts	Gross Receipts	Refunds (Deduct)	Receipts	Gross Receipts	Refunds (Deduct)	Receipts
<b>Individual Income Taxes</b>									
Withheld	90,789			835,412			785,473		
Presidential Election Campaign Fund	5			27			27		
Other	9,109			396,766			333,226		
<b>Total -- Individual Income Taxes</b>	<b>99,903</b>	<b>14,868</b>	<b>85,035</b>	<b>1,232,205</b>	<b>217,532</b>	<b>1,014,673</b>	<b>1,118,726</b>	<b>215,702</b>	<b>903,024</b>
<b>Corporation Income Taxes</b>									
	<b>9,524</b>	<b>2,184</b>	<b>7,340</b>	<b>218,849</b>	<b>36,164</b>	<b>182,685</b>	<b>190,084</b>	<b>25,244</b>	<b>164,840</b>
<b>Social Insurance and Retirement Receipts:</b>									
Employment and General Retirement:									
Federal Old-Age and Survivors Insurance Trust Fund:									
Federal Insurance Contributions Act Taxes	51,673	.....	51,673	410,847	.....	410,847	393,669	.....	393,669
Self-Employment Contributions Act Taxes	782	.....	782	25,947	.....	25,947	24,903	.....	24,903
Adjustments Attributable to Prior Years	.....	.....	.....	3,477	.....	3,477	3,480	.....	3,480
<b>Total -- Federal Old-Age and Survivors Insurance Trust Fund</b>	<b>52,455</b>	<b>.....</b>	<b>52,455</b>	<b>440,271</b>	<b>.....</b>	<b>440,271</b>	<b>422,052</b>	<b>.....</b>	<b>422,052</b>
Federal Disability Insurance Trust Fund:									
Federal Insurance Contributions Act Taxes	8,775	.....	8,775	69,767	.....	69,767	66,848	.....	66,848
Self-Employment Contributions Act Taxes	133	.....	133	4,407	.....	4,407	4,231	.....	4,231
Adjustments Attributable to Prior Years	.....	.....	.....	588	.....	588	586	.....	586
<b>Total -- Federal Disability Insurance Trust Fund</b>	<b>8,908</b>	<b>.....</b>	<b>8,908</b>	<b>74,762</b>	<b>.....</b>	<b>74,762</b>	<b>71,665</b>	<b>.....</b>	<b>71,665</b>
Federal Hospital Insurance Trust Fund:									
Federal Insurance Contributions Act Taxes	16,707	.....	16,707	143,671	.....	143,671	137,605	.....	137,605
Self-Employment Contributions Act Taxes	346	.....	346	11,704	.....	11,704	11,496	.....	11,496
Adjustments Attributable to Prior Years	.....	.....	.....	874	.....	874	1,974	.....	1,974
<b>Total -- Federal Hospital Insurance Trust Fund</b>	<b>17,053</b>	<b>.....</b>	<b>17,053</b>	<b>156,249</b>	<b>.....</b>	<b>156,249</b>	<b>151,075</b>	<b>.....</b>	<b>151,075</b>
Railroad Retirement:									
Rail Pension and Supplemental Annuity	284	1	283	2,219	1	2,218	2,021	8	2,013
Social Security Equivalent Account	266	1	265	2,086	1	2,085	1,947	8	1,939
<b>Total -- Employment and General Retirement</b>	<b>78,966</b>	<b>1</b>	<b>78,965</b>	<b>675,587</b>	<b>2</b>	<b>675,585</b>	<b>648,759</b>	<b>16</b>	<b>648,743</b>
Unemployment Insurance:									
Deposits by States	15,090	.....	15,090	33,605	.....	33,605	35,640	.....	35,640
Federal Unemployment Taxes	127	13	114	8,125	97	8,028	7,655	91	7,564
Railroad Unemployment Taxes	1	.....	1	43	.....	43	27	.....	27
<b>Total -- Unemployment Insurance</b>	<b>15,217</b>	<b>13</b>	<b>15,204</b>	<b>41,772</b>	<b>97</b>	<b>41,675</b>	<b>43,322</b>	<b>91</b>	<b>43,231</b>
Other Retirement:									
Federal Employees' Retirement--Employee Share	285	.....	285	2,376	.....	2,376	2,277	.....	2,277
Non-Federal Employees Retirement	2	.....	2	15	.....	15	17	.....	17
<b>Total -- Other Retirement</b>	<b>286</b>	<b>.....</b>	<b>286</b>	<b>2,391</b>	<b>.....</b>	<b>2,391</b>	<b>2,294</b>	<b>.....</b>	<b>2,294</b>
<b>Total -- Social Insurance and Retirement Receipts</b>	<b>94,469</b>	<b>14</b>	<b>94,455</b>	<b>719,750</b>	<b>100</b>	<b>719,651</b>	<b>694,375</b>	<b>107</b>	<b>694,268</b>
<b>Excise Taxes:</b>									
Miscellaneous Excise Taxes	3,486	105	3,381	22,203	2,617	19,586	22,093	2,632	19,461
Airport and Airway Trust Fund	1,123	.....	1,123	8,661	12	8,649	8,137	10	8,126
Highway Trust Fund	2,854	.....	2,854	24,390	.....	24,390	23,609	.....	23,609
Black Lung Disability Trust Fund	45	.....	45	361	.....	361	367	.....	367
<b>Total -- Excise Taxes</b>	<b>7,507</b>	<b>105</b>	<b>7,403</b>	<b>55,616</b>	<b>2,630</b>	<b>52,987</b>	<b>54,205</b>	<b>2,642</b>	<b>51,563</b>
<b>Estate and Gift Taxes</b>									
	<b>1,755</b>	<b>53</b>	<b>1,703</b>	<b>14,390</b>	<b>532</b>	<b>13,858</b>	<b>13,124</b>	<b>542</b>	<b>12,582</b>
<b>Customs Duties</b>									
	<b>2,654</b>	<b>106</b>	<b>2,548</b>	<b>24,448</b>	<b>1,055</b>	<b>23,393</b>	<b>23,005</b>	<b>880</b>	<b>22,125</b>
<b>Miscellaneous Receipts:</b>									
Deposit of Earnings, Federal Reserve System	8,180	.....	8,180	60,810	.....	60,810	66,200	.....	66,200
Universal Service Fund	799	.....	799	6,318	.....	6,318	6,559	.....	6,559
All Other	4,924	1	4,923	29,623	11	29,612	15,600	22	15,579
<b>Total -- Miscellaneous Receipts</b>	<b>13,904</b>	<b>1</b>	<b>13,903</b>	<b>96,751</b>	<b>11</b>	<b>96,740</b>	<b>88,359</b>	<b>22</b>	<b>88,337</b>
<b>Total -- Receipts</b>	<b>229,716</b>	<b>17,331</b>	<b>212,386</b>	<b>2,362,011</b>	<b>258,024</b>	<b>2,103,987</b>	<b>2,181,877</b>	<b>245,138</b>	<b>1,936,739</b>
<b>Total -- On-Budget</b>	<b>168,353</b>	<b>17,331</b>	<b>151,023</b>	<b>1,846,978</b>	<b>258,024</b>	<b>1,588,954</b>	<b>1,688,161</b>	<b>245,138</b>	<b>1,443,023</b>
<b>Total -- Off-Budget</b>	<b>61,363</b>	<b>.....</b>	<b>61,363</b>	<b>515,033</b>	<b>.....</b>	<b>515,033</b>	<b>493,716</b>	<b>.....</b>	<b>493,716</b>

Note: Details may not add to totals due to rounding.

... No Transactions

**Table 5. Outlays of the U.S. Government, May 2015 and Other Periods**

Classification	This Month			Current Fiscal Year to Date			Prior Fiscal Year to Date		
	Gross Outlays	Applicable Receipts	Outlays	Gross Outlays	Applicable Receipts	Outlays	Gross Outlays	Applicable Receipts	Outlays
<b>Legislative Branch:</b>									
Senate	68	(**)	68	561	1	560	536	2	534
House of Representatives	97	(**)	97	836	1	835	823	2	821
Joint Items	1	.....	1	10	.....	10	10	.....	10
Capitol Police	26	.....	26	223	.....	223	209	.....	209
Congressional Budget Office	3	.....	3	30	.....	30	27	.....	27
Architect of the Capitol	41	(**)	40	354	3	351	293	3	290
Library of Congress	43	1	42	380	6	374	367	6	361
Government Printing Office	-3	.....	-3	90	.....	90	97	.....	97
Government Accountability Office	38	.....	38	334	.....	334	321	.....	321
United States Tax Court	4	.....	4	34	.....	34	36	.....	36
Other Legislative Branch Agencies	5	.....	5	34	.....	34	35	.....	35
Proprietary Receipts from the Public	.....	1	-1	.....	8	-8	.....	12	-12
Intrabudgetary Transactions	(**)	.....	(**)	-7	.....	-7	-6	.....	-6
Offsetting Governmental Receipts	.....	.....	.....	.....	(**)	(**)	.....	(**)	(**)
<b>Total--Legislative Branch</b>	<b>322</b>	<b>2</b>	<b>320</b>	<b>2,879</b>	<b>20</b>	<b>2,859</b>	<b>2,748</b>	<b>24</b>	<b>2,724</b>
<b>Judicial Branch:</b>									
Supreme Court of the United States	7	.....	7	55	.....	55	66	.....	66
Courts of Appeals, District Courts, and Other Judicial Services	547	.....	547	4,870	.....	4,870	4,681	.....	4,681
Other	26	.....	26	350	.....	350	326	.....	326
Proprietary Receipts from the Public	.....	19	-19	.....	107	-107	.....	109	-109
Intrabudgetary Transactions	-20	.....	-20	-531	.....	-531	-467	.....	-467
<b>Total--Judicial Branch</b>	<b>559</b>	<b>19</b>	<b>540</b>	<b>4,743</b>	<b>107</b>	<b>4,636</b>	<b>4,605</b>	<b>109</b>	<b>4,496</b>
<b>Department of Agriculture:</b>									
Agricultural Research Service	87	.....	87	730	.....	730	679	.....	679
National Institute of Food and Agriculture:									
Research and Education Activities	52	.....	52	451	.....	451	412	.....	412
Extension Activities	39	.....	39	296	.....	296	275	.....	275
Other	7	.....	7	61	.....	61	67	.....	67
Animal and Plant Health Inspection Service	140	.....	140	781	.....	781	657	.....	657
Food Safety and Inspection Service	67	.....	67	645	.....	645	632	.....	632
Agricultural Marketing Service	64	.....	64	784	.....	784	491	.....	491
Risk Management Agency:									
Administrative and Operating Expenses	8	.....	8	49	.....	49	41	.....	41
Federal Crop Insurance Corporation Fund	168	21	147	8,744	74	8,670	9,808	179	9,629
Farm Service Agency:									
Salaries and Expenses	31	.....	31	814	.....	814	603	.....	603
USDA Supplemental Assistance	(**)	.....	(**)	(**)	.....	(**)	(**)	.....	(**)
Agricultural Disaster Relief Fund	(**)	.....	(**)	1	.....	1	34	.....	34
Commodity Credit Corporation	189	405	-216	11,380	3,868	7,513	14,150	4,872	9,278
Tobacco Trust Fund	(**)	.....	(**)	227	.....	227	620	.....	620
Agricultural Credit Insurance Fund	222	5	217	351	74	277	560	95	465
Other	23	.....	23	68	.....	68	34	.....	34
<b>Total--Farm Service Agency</b>	<b>465</b>	<b>410</b>	<b>55</b>	<b>12,841</b>	<b>3,942</b>	<b>8,899</b>	<b>16,002</b>	<b>4,967</b>	<b>11,035</b>
Natural Resources Conservation Service:									
Conservation Operations	57	.....	57	487	.....	487	494	.....	494
Farm Security and Rural Investment Programs	134	.....	134	2,094	.....	2,094	2,064	.....	2,064
Other	5	.....	5	70	.....	70	85	.....	85
Rural Development	48	.....	48	-20	.....	-20	-65	.....	-65
Rural Housing Service:									
Rural Housing Insurance Fund	6	42	-36	480	361	120	463	363	101
Rental Assistance Program	96	.....	96	786	.....	786	775	.....	775
Other	10	.....	10	86	.....	86	81	.....	81
Rural Utilities Service:									
Rural Electrification and Telecommunications Fund	(**)	43	-43	164	562	-398	982	2,270	-1,287
Other	93	8	85	637	93	544	658	122	536
Foreign Agricultural Service	98	.....	98	997	.....	997	949	.....	949
Food and Nutrition Service:									
Supplemental Nutrition Assistance Program	6,269	.....	6,269	50,818	.....	50,818	51,038	.....	51,038
Child Nutrition Programs	2,043	.....	2,043	15,870	.....	15,870	14,544	.....	14,544
Special Supplemental Nutrition Program for Women, Infants, and Children (WIC)	468	.....	468	4,137	.....	4,137	4,169	.....	4,169
Other	28	.....	28	288	.....	288	220	.....	220
<b>Total--Food and Nutrition Service</b>	<b>8,807</b>	<b>.....</b>	<b>8,807</b>	<b>71,113</b>	<b>.....</b>	<b>71,113</b>	<b>69,971</b>	<b>.....</b>	<b>69,971</b>

**Table 5. Outlays of the U.S. Government, May 2015 and Other Periods - Continued**

Classification	This Month			Current Fiscal Year to Date			Prior Fiscal Year to Date		
	Gross Outlays	Applicable Receipts	Outlays	Gross Outlays	Applicable Receipts	Outlays	Gross Outlays	Applicable Receipts	Outlays
<b>Department of Agriculture: - Continued</b>									
Forest Service:									
National Forest System	123	.....	123	1,003	.....	1,003	959	.....	959
Capital Improvement and Maintenance	27	.....	27	218	.....	218	209	.....	209
Wildland Fire Management	173	.....	173	1,205	.....	1,205	1,351	.....	1,351
Forest Service Permanent Appropriations	217	.....	217	380	.....	380	362	.....	362
Other	58	.....	58	502	.....	502	521	.....	521
<b>Total--Forest Service</b>	<b>599</b>	<b>.....</b>	<b>599</b>	<b>3,308</b>	<b>.....</b>	<b>3,308</b>	<b>3,401</b>	<b>.....</b>	<b>3,401</b>
Other	52	4	47	380	46	335	664	40	625
Proprietary Receipts from the Public	.....	487	-487	.....	1,209	-1,209	.....	1,039	-1,039
Intrabudgetary Transactions	31	.....	31	59	.....	59	85	.....	85
<b>Total--Department of Agriculture</b>	<b>11,133</b>	<b>1,015</b>	<b>10,118</b>	<b>106,025</b>	<b>6,287</b>	<b>99,738</b>	<b>109,673</b>	<b>8,979</b>	<b>100,695</b>
<b>Department of Commerce:</b>									
Economic Development Administration	27	(**)	27	201	5	196	238	1	236
Bureau of the Census	84	.....	84	741	.....	741	694	.....	694
International Trade Administration	44	.....	44	295	.....	295	280	.....	280
National Oceanic and Atmospheric Administration	436	(**)	436	3,621	74	3,547	3,480	147	3,333
National Institute of Standards and Technology	64	.....	64	578	.....	578	538	.....	538
National Telecommunications and Information Administration	18	.....	18	165	.....	165	274	.....	274
Other	46	12	34	324	104	220	-138	64	-202
Proprietary Receipts from the Public	.....	14	-14	.....	14	-14	.....	3	-3
Intrabudgetary Transactions	4	.....	4	11	.....	11	-6	.....	-6
Offsetting Governmental Receipts	.....	(**)	(**)	.....	3	-3	.....	2	-2
<b>Total--Department of Commerce</b>	<b>721</b>	<b>27</b>	<b>694</b>	<b>5,937</b>	<b>200</b>	<b>5,737</b>	<b>5,360</b>	<b>216</b>	<b>5,144</b>
<b>Department of Defense--Military Programs:</b>									
Military Personnel:									
Department of the Army	4,783	.....	4,783	39,877	.....	39,877	43,918	.....	43,918
Department of the Navy	3,545	.....	3,545	30,699	.....	30,699	32,611	.....	32,611
Department of the Air Force	2,704	.....	2,704	23,116	.....	23,116	24,786	.....	24,786
Defense Agencies	.....	.....	.....	6,197	.....	6,197	6,337	.....	6,337
<b>Total--Military Personnel</b>	<b>11,031</b>	<b>.....</b>	<b>11,031</b>	<b>99,889</b>	<b>.....</b>	<b>99,889</b>	<b>107,652</b>	<b>.....</b>	<b>107,652</b>
Operation and Maintenance:									
Department of the Army	6,034	.....	6,034	45,532	.....	45,532	47,368	.....	47,368
Department of the Navy	4,475	.....	4,475	35,602	.....	35,602	34,913	.....	34,913
Department of the Air Force	3,878	.....	3,878	34,824	.....	34,824	33,171	.....	33,171
Defense Agencies	6,176	.....	6,176	45,909	.....	45,909	44,384	.....	44,384
<b>Total--Operation and Maintenance</b>	<b>20,563</b>	<b>.....</b>	<b>20,563</b>	<b>161,867</b>	<b>.....</b>	<b>161,867</b>	<b>159,835</b>	<b>.....</b>	<b>159,835</b>
International Reconstruction and Other Assistance:									
Department of the Army	.....	.....	.....	(**)	.....	(**)	1	.....	1
Procurement:									
Department of the Army	1,204	.....	1,204	12,133	.....	12,133	15,439	.....	15,439
Department of the Navy	3,144	.....	3,144	26,279	.....	26,279	28,167	.....	28,167
Department of the Air Force	4,713	.....	4,713	25,794	.....	25,794	25,046	.....	25,046
Defense Agencies	428	.....	428	4,192	.....	4,192	4,535	.....	4,535
<b>Total--Procurement</b>	<b>9,489</b>	<b>.....</b>	<b>9,489</b>	<b>68,398</b>	<b>.....</b>	<b>68,398</b>	<b>73,186</b>	<b>.....</b>	<b>73,186</b>
Research, Development, Test, and Evaluation:									
Department of the Army	753	.....	753	4,892	.....	4,892	5,151	.....	5,151
Department of the Navy	1,425	.....	1,425	10,596	.....	10,596	10,132	.....	10,132
Department of the Air Force	1,248	.....	1,248	15,001	.....	15,001	14,646	.....	14,646
Defense Agencies	1,441	.....	1,441	11,380	.....	11,380	11,895	.....	11,895
<b>Total--Research, Development, Test, and Evaluation</b>	<b>4,867</b>	<b>.....</b>	<b>4,867</b>	<b>41,869</b>	<b>.....</b>	<b>41,869</b>	<b>41,825</b>	<b>.....</b>	<b>41,825</b>
Military Construction:									
Department of the Army	137	.....	137	1,591	.....	1,591	1,937	.....	1,937
Department of the Navy	125	.....	125	1,146	.....	1,146	1,339	.....	1,339
Department of the Air Force	100	.....	100	585	.....	585	794	.....	794
Defense Agencies	307	.....	307	2,185	.....	2,185	2,291	.....	2,291
<b>Total--Military Construction</b>	<b>668</b>	<b>.....</b>	<b>668</b>	<b>5,507</b>	<b>.....</b>	<b>5,507</b>	<b>6,362</b>	<b>.....</b>	<b>6,362</b>
Family Housing:									
Department of the Army	21	.....	21	281	.....	281	289	.....	289
Department of the Navy	24	.....	24	212	.....	212	234	.....	234
Department of the Air Force	26	.....	26	210	.....	210	264	.....	264
Defense Agencies	5	2	3	52	15	37	60	18	42
Revolving and Management Funds:									



**Table 5. Outlays of the U.S. Government, May 2015 and Other Periods - Continued**

Classification	This Month			Current Fiscal Year to Date			Prior Fiscal Year to Date		
	Gross Outlays	Applicable Receipts	Outlays	Gross Outlays	Applicable Receipts	Outlays	Gross Outlays	Applicable Receipts	Outlays
<b>Department of Defense--Military Programs: - Continued</b>									
Department of the Navy	2	.....	2	299	.....	299	745	.....	745
Defense Agencies:									
Working Capital Fund	-935	.....	-935	-1,670	.....	-1,670	1,150	.....	1,150
Other	-35	.....	-35	40	.....	40	156	.....	156
Allowances	-1	.....	-1	2	.....	2	47	.....	47
Trust Funds:									
Department of the Army	1	.....	1	3	.....	3	6	.....	6
Department of the Navy	2	.....	2	16	.....	16	15	.....	15
Department of the Air Force	4	.....	4	30	(**)	30	2	(**)	1
Defense Agencies	14	.....	14	128	.....	128	158	.....	158
Proprietary Receipts from the Public:									
Department of the Army	.....	30	-30	.....	258	-258	.....	895	-895
Department of the Navy	.....	14	-14	.....	94	-94	.....	87	-87
Department of the Air Force	.....	-36	36	.....	8	-8	.....	13	-13
Defense Agencies	.....	122	-122	.....	731	-731	.....	861	-861
Intrabudgetary Transactions:									
Department of the Army	59	.....	59	-79	.....	-79	-24	.....	-24
Department of the Navy	7	.....	7	8	.....	8	-153	.....	-153
Department of the Air Force	21	.....	21	-8	.....	-8	71	.....	71
Defense Agencies	-69	.....	-69	-221	.....	-221	294	.....	294
Offsetting Governmental Receipts:									
Department of the Army	.....	.....	.....	.....	(**)	(**)	.....	1	-1
<b>Total--Department of Defense--Military Programs</b>	<b>45,765</b>	<b>133</b>	<b>45,632</b>	<b>376,832</b>	<b>1,106</b>	<b>375,726</b>	<b>392,175</b>	<b>1,874</b>	<b>390,300</b>
<b>Department of Education:</b>									
Office of Elementary and Secondary Education:									
Accelerating Achievement and Ensuring Equity	1,685	.....	1,685	10,351	.....	10,351	10,762	.....	10,762
Impact Aid	29	.....	29	1,256	.....	1,256	1,043	.....	1,043
Education Improvement Programs	320	.....	320	2,776	.....	2,776	2,898	.....	2,898
State Fiscal Stabilization Fund, Recovery Act	89	.....	89	612	.....	612	950	.....	950
Other	34	.....	34	244	.....	244	249	.....	249
<b>Total--Office of Elementary and Secondary Education</b>	<b>2,158</b>	<b>.....</b>	<b>2,158</b>	<b>15,240</b>	<b>.....</b>	<b>15,240</b>	<b>15,901</b>	<b>.....</b>	<b>15,901</b>
Office of Innovation and Improvement	109	.....	109	899	.....	899	750	.....	750
Office of English Language Acquisition	46	.....	46	463	.....	463	484	.....	484
Office of Special Education and Rehabilitative Services:									
Special Education	1,154	.....	1,154	8,410	.....	8,410	8,648	.....	8,648
Rehabilitation Services and Disability Research	243	.....	243	2,276	.....	2,276	2,227	.....	2,227
Special Institutions for Persons with Disabilities	14	.....	14	147	.....	147	145	.....	145
Office of Vocational and Adult Education	140	.....	140	1,056	.....	1,056	1,082	.....	1,082
Office of Postsecondary Education:									
Higher Education	178	.....	178	1,343	.....	1,343	1,423	.....	1,423
Other	-1	2	-3	162	7	155	172	9	163
<b>Total--Office of Postsecondary Education</b>	<b>177</b>	<b>2</b>	<b>175</b>	<b>1,505</b>	<b>7</b>	<b>1,498</b>	<b>1,595</b>	<b>9</b>	<b>1,586</b>
Office of Federal Student Aid:									
Student Financial Assistance	842	.....	842	20,560	.....	20,560	21,328	.....	21,328
Student Aid Administration	139	.....	139	882	.....	882	852	.....	852
Federal Student Loan Reserve Fund	.....	.....	.....	16	.....	16	166	.....	166
Federal Direct Student Loans	.....	.....	.....	.....	.....	.....	(**)	.....	(**)
Federal Family Education Loans	-37	.....	-37	-258	.....	-258	-183	.....	-183
Other	(**)	1	-1	9	6	3	8	.....	8
<b>Total--Office of Federal Student Aid</b>	<b>944</b>	<b>1</b>	<b>943</b>	<b>21,210</b>	<b>6</b>	<b>21,203</b>	<b>22,172</b>	<b>.....</b>	<b>22,172</b>
Institute of Education Sciences	47	.....	47	407	.....	407	418	.....	418
Departmental Management	50	.....	50	376	.....	376	385	.....	385
Other	(**)	.....	(**)	(**)	.....	(**)	1	.....	1
Proprietary Receipts from the Public	.....	92	-92	.....	6,192	-6,192	.....	17,839	-17,839
Intrabudgetary Transactions	102	.....	102	-76	.....	-76	41	.....	41
<b>Total--Department of Education</b>	<b>5,184</b>	<b>95</b>	<b>5,089</b>	<b>51,913</b>	<b>6,206</b>	<b>45,707</b>	<b>53,849</b>	<b>17,848</b>	<b>36,000</b>
<b>Department of Energy:</b>									
National Nuclear Security Administration:									
Naval Reactors	175	.....	175	732	.....	732	710	.....	710
Weapons Activities	502	.....	502	5,059	.....	5,059	5,076	.....	5,076
Defense Nuclear Nonproliferation	138	.....	138	1,230	.....	1,230	1,238	.....	1,238
Other	25	.....	25	239	.....	239	245	.....	245

**Table 5. Outlays of the U.S. Government, May 2015 and Other Periods - Continued**

Classification	This Month			Current Fiscal Year to Date			Prior Fiscal Year to Date		
	Gross Outlays	Applicable Receipts	Outlays	Gross Outlays	Applicable Receipts	Outlays	Gross Outlays	Applicable Receipts	Outlays
<b>Department of Energy: - Continued</b>									
Environmental and Other Defense Activities:									
Defense Environmental Cleanup	821	.....	821	3,739	.....	3,739	3,116	.....	3,116
Other Defense Activities	75	.....	75	557	.....	557	474	.....	474
Defense Nuclear Waste Disposal	(**)	.....	(**)	3	.....	3	2	.....	2
Energy Programs:									
Science	389	.....	389	3,228	.....	3,228	3,297	.....	3,297
Energy Supply	116	.....	116	971	.....	971	949	.....	949
Energy Efficiency and Renewable Energy	161	.....	161	1,217	.....	1,217	1,389	.....	1,389
Fossil Energy Research and Development	55	.....	55	562	.....	562	558	.....	558
Uranium Enrichment Decontamination and Decommissioning Fund	38	.....	38	400	.....	400	264	.....	264
Advanced Technology Vehicles Manufacturing Loan Program	1	.....	1	18	.....	18	17	.....	17
Title 17 Innovative Technology Loan Guarantee Program	3	.....	3	96	.....	96	167	.....	167
Other	82	3	79	662	36	626	615	47	569
Total--Energy Programs	844	3	841	7,154	36	7,118	7,256	47	7,209
Power Marketing Administration	271	293	-22	2,581	2,540	41	2,484	2,644	-160
Departmental Administration	21	.....	21	121	.....	121	95	.....	95
Proprietary Receipts from the Public	.....	64	-64	.....	785	-785	.....	1,439	-1,439
Intrabudgetary Transactions	-622	.....	-622	-1,459	.....	-1,459	-1,024	.....	-1,024
<b>Total--Department of Energy</b>	<b>2,251</b>	<b>360</b>	<b>1,891</b>	<b>19,956</b>	<b>3,361</b>	<b>16,596</b>	<b>19,672</b>	<b>4,129</b>	<b>15,543</b>
<b>Department of Health and Human Services:</b>									
Food and Drug Administration	294	(**)	294	1,842	5	1,837	1,472	5	1,467
Health Resources and Services Administration	659	.....	659	6,009	.....	6,009	6,004	5	5,999
Indian Health Service	178	.....	178	3,645	.....	3,645	3,745	.....	3,745
Centers for Disease Control and Prevention	539	.....	539	4,377	.....	4,377	4,076	.....	4,076
National Institutes of Health	2,250	.....	2,250	18,904	.....	18,904	19,884	.....	19,884
Substance Abuse and Mental Health Services Administration	410	.....	410	2,112	.....	2,112	2,155	.....	2,155
Agency for Healthcare Research and Quality	10	.....	10	111	.....	111	49	.....	49
Centers for Medicare and Medicaid Services:									
Grants to States for Medicaid	28,476	.....	28,476	229,595	.....	229,595	190,950	.....	190,950
Payments to Health Care Trust Funds	21,839	.....	21,839	186,739	.....	186,739	180,736	.....	180,736
Children's Health Insurance Fund	482	.....	482	5,930	.....	5,930	6,905	.....	6,905
State Grants and Demonstrations	48	.....	48	357	.....	357	325	.....	325
Federal Hospital Insurance Trust Fund:									
Benefit Payments	22,277	.....	22,277	180,186	.....	180,186	177,518	.....	177,518
Administrative Expenses	303	.....	303	5,360	.....	5,360	5,751	.....	5,751
Total--Federal Hospital Insurance Trust Fund	22,580	.....	22,580	185,546	.....	185,546	183,269	.....	183,269
Health Care Fraud and Abuse Control	114	.....	114	1,048	.....	1,048	839	.....	839
Federal Supplementary Medical Insurance Trust Fund:									
Benefit Payments	23,574	.....	23,574	177,249	.....	177,249	171,363	.....	171,363
Administrative Expenses	580	.....	580	4,074	.....	4,074	4,305	.....	4,305
Medicare Prescription Drugs:									
Benefit Payments	6,071	.....	6,071	50,858	.....	50,858	47,692	.....	47,692
Administrative Expenses	36	.....	36	323	.....	323	271	.....	271
Total--Federal Supplementary Medical Insurance Trust Fund	30,261	.....	30,261	232,504	.....	232,504	223,631	.....	223,631
Other	237	.....	237	1,937	.....	1,937	2,551	.....	2,551
Total--Centers for Medicare and Medicaid Services	104,037	.....	104,037	843,657	.....	843,657	789,206	.....	789,206
Administration for Children and Families:									
Temporary Assistance for Needy Families	1,281	.....	1,281	9,867	.....	9,867	10,497	.....	10,497
Contingency Fund	156	.....	156	536	.....	536	436	.....	436
Payments to States for Child Support Enforcement and Family Support Programs	253	.....	253	2,142	.....	2,142	2,200	.....	2,200
Low Income Home Energy Assistance	220	.....	220	2,779	.....	2,779	2,886	.....	2,886
Refugee and Entrant Assistance	109	.....	109	803	.....	803	701	.....	701
Child Care Entitlement to States	225	.....	225	1,864	.....	1,864	1,815	.....	1,815
Payments to States for the Child Care and Development Block Grant	149	.....	149	1,399	.....	1,399	1,414	.....	1,414
Social Services Block Grant	146	.....	146	1,238	.....	1,238	1,100	.....	1,100
Children and Families Services Programs	837	.....	837	6,798	.....	6,798	6,368	.....	6,368
Payments to States for Foster Care and Adoption Assistance	678	.....	678	4,906	.....	4,906	4,676	.....	4,676
Other	48	.....	48	354	.....	354	362	.....	362
Total--Administration for Children and Families	4,103	.....	4,103	32,686	.....	32,686	32,454	.....	32,454

**Table 5. Outlays of the U.S. Government, May 2015 and Other Periods - Continued**

Classification	This Month			Current Fiscal Year to Date			Prior Fiscal Year to Date		
	Gross Outlays	Applicable Receipts	Outlays	Gross Outlays	Applicable Receipts	Outlays	Gross Outlays	Applicable Receipts	Outlays
<b>Department of Health and Human Services: - Continued</b>									
Administration for Community Living	144	.....	144	1,106	.....	1,106	954	.....	954
Departmental Management	194	.....	194	1,873	.....	1,873	1,862	.....	1,862
Other	75	.....	75	414	.....	414	524	.....	524
Proprietary Receipts from the Public	.....	7,050	-7,050	.....	60,169	-60,169	.....	58,587	-58,587
Intrabudgetary Transactions:									
Payments for Health Insurance for the Aged:									
Federal Supplementary Medical Insurance Trust Fund	-21,839	.....	-21,839	-172,791	.....	-172,791	-167,696	.....	-167,696
Payments for Tax and Other Credits:									
Federal Hospital Insurance Trust Fund	-2	.....	-2	-13,971	.....	-13,971	-13,037	.....	-13,037
Other	-47	.....	-47	-46	.....	-46	934	.....	934
<b>Total--Department of Health and Human Services</b>	<b>91,007</b>	<b>7,050</b>	<b>83,956</b>	<b>729,929</b>	<b>60,174</b>	<b>669,755</b>	<b>682,587</b>	<b>58,597</b>	<b>623,990</b>
<b>Department of Homeland Security:</b>									
Departmental Management and Operations	274	.....	274	638	.....	638	646	.....	646
Citizenship and Immigration Services	236	.....	236	2,069	.....	2,069	1,907	.....	1,907
United States Secret Service	155	.....	155	1,186	.....	1,186	1,164	.....	1,164
Transportation Security Administration	331	.....	331	3,934	.....	3,934	3,472	.....	3,472
Immigration and Customs Enforcement	516	.....	516	3,834	.....	3,834	3,500	.....	3,500
U.S. Customs and Border Protection	951	1	950	8,072	5	8,067	7,598	(**)	7,598
United States Coast Guard	799	.....	799	6,911	.....	6,911	7,063	.....	7,063
National Protection and Programs Directorate	100	.....	100	863	.....	863	833	.....	833
Federal Emergency Management Agency:									
State and Local Programs									
Firefighter Assistance Grants	49	.....	49	414	.....	414	424	.....	424
Disaster Relief	493	.....	493	4,439	.....	4,439	3,747	.....	3,747
National Flood Insurance Fund	46	261	-215	570	1,525	-955	678	1,461	-784
Other	107	.....	107	784	.....	784	835	.....	835
<b>Total--Federal Emergency Management Agency</b>	<b>857</b>	<b>261</b>	<b>596</b>	<b>7,715</b>	<b>1,525</b>	<b>6,190</b>	<b>7,420</b>	<b>1,461</b>	<b>5,959</b>
Science and Technology	72	.....	72	495	.....	495	456	.....	456
Domestic Nuclear Detection Office	23	.....	23	196	.....	196	198	.....	198
Other	34	.....	34	257	.....	257	251	.....	251
Proprietary Receipts from the Public	.....	252	-252	.....	408	-408	.....	159	-159
Intrabudgetary Transactions	13	.....	13	7	.....	7	-6	.....	-6
Offsetting Governmental Receipts	.....	913	-913	.....	6,667	-6,667	.....	5,083	-5,083
<b>Total--Department of Homeland Security</b>	<b>4,360</b>	<b>1,426</b>	<b>2,934</b>	<b>36,177</b>	<b>8,605</b>	<b>27,573</b>	<b>34,501</b>	<b>6,703</b>	<b>27,798</b>
<b>Department of Housing and Urban Development:</b>									
Public and Indian Housing Programs:									
Tenant Based Rental Assistance	1,493	.....	1,493	12,155	.....	12,155	12,450	.....	12,450
Housing Certificate Fund	19	.....	19	180	.....	180	239	.....	239
Project-Based Rental Assistance	858	.....	858	6,785	.....	6,785	6,503	.....	6,503
Public Housing Capital Fund	143	.....	143	1,143	.....	1,143	1,293	.....	1,293
Public Housing Operating Fund	363	.....	363	2,909	.....	2,909	2,815	.....	2,815
Revitalization of Severely Distressed Public Housing (Hope VI)	5	.....	5	57	.....	57	65	.....	65
Native American Housing Block Grant	77	.....	77	501	.....	501	523	.....	523
Other	11	.....	11	53	.....	53	40	.....	40
<b>Total--Public and Indian Housing Programs</b>	<b>2,970</b>	<b>.....</b>	<b>2,970</b>	<b>23,783</b>	<b>.....</b>	<b>23,783</b>	<b>23,929</b>	<b>.....</b>	<b>23,929</b>
Community Planning and Development:									
Housing Opportunities for Persons with AIDS	23	.....	23	219	.....	219	194	.....	194
Community Development Fund	454	.....	454	4,285	.....	4,285	4,293	.....	4,293
Home Investment Partnership Program	92	.....	92	767	.....	767	827	.....	827
Neighborhood Stabilization Program	5	.....	5	48	.....	48	264	.....	264
Homeless Assistance Grants	142	.....	142	1,264	.....	1,264	1,267	.....	1,267
Other	5	.....	5	54	(**)	54	63	(**)	63
<b>Total--Community Planning and Development</b>	<b>720</b>	<b>.....</b>	<b>720</b>	<b>6,636</b>	<b>(**)</b>	<b>6,636</b>	<b>6,908</b>	<b>(**)</b>	<b>6,908</b>
Housing Programs:									
Credit Accounts:									
FHA-Mutual Mortgage Insurance Fund, Program Account	10	.....	10	12,969	.....	12,969	5,836	.....	5,836
FHA-Mutual Mortgage Insurance Capital Reserve Account	-707	.....	-707	-15,783	.....	-15,783	-9,778	.....	-9,778
FHA-Mutual Mortgage and Cooperative Housing Insurance Fund, Liquidating Account	3	2	1	25	19	5	16	12	4
FHA-General and Special Risk Fund, Program Account	.....	.....	.....	2,080	.....	2,080	210	.....	210
FHA-General and Special Risk Fund, Liquidating Account	5	11	-7	44	161	-117	38	159	-121

**Table 5. Outlays of the U.S. Government, May 2015 and Other Periods - Continued**

Classification	This Month			Current Fiscal Year to Date			Prior Fiscal Year to Date		
	Gross Outlays	Applicable Receipts	Outlays	Gross Outlays	Applicable Receipts	Outlays	Gross Outlays	Applicable Receipts	Outlays
<b>Department of Housing and Urban Development: - Continued</b>									
Housing for the Elderly or Handicapped Fund:									
Liquidating Account	(**)	46	-46	2	355	-354	(**)	321	-321
Housing for the Elderly	60	.....	60	511	.....	511	594	.....	594
Housing for Persons with Disabilities	15	.....	15	127	.....	127	153	.....	153
Other Assisted Housing Programs	19	.....	19	179	.....	179	222	.....	222
Other	3	7	-3	43	32	11	52	31	21
<b>Total--Housing Programs</b>	<b>-592</b>	<b>66</b>	<b>-658</b>	<b>196</b>	<b>568</b>	<b>-372</b>	<b>-2,656</b>	<b>523</b>	<b>-3,179</b>
Government National Mortgage Association:									
Guarantees of Mortgage-Backed Securities	9	(**)	9	28	1	27	20	51	-30
Management and Administration	136	.....	136	1,157	.....	1,157	1,141	.....	1,141
Other	16	.....	16	126	.....	126	132	.....	132
Proprietary Receipts from the Public:									
FHA-General and Special Risk Fund	.....	20	-20	.....	2,579	-2,579	.....	2,464	-2,464
Other	.....	4	-4	.....	12	-12	.....	17	-17
Intrabudgetary Transactions	(**)	.....	(**)	-5	.....	-5	-8	.....	-8
Offsetting Governmental Receipts	.....	1	-1	.....	7	-7	.....	2	-2
<b>Total--Department of Housing and Urban Development</b>	<b>3,259</b>	<b>92</b>	<b>3,167</b>	<b>31,920</b>	<b>3,166</b>	<b>28,755</b>	<b>29,467</b>	<b>3,057</b>	<b>26,410</b>
<b>Department of the Interior:</b>									
Land and Minerals Management:									
Bureau of Land Management:									
Management of Lands and Resources	78	.....	78	613	.....	613	638	.....	638
Other	44	3	41	297	30	267	310	-94	404
Bureau of Ocean Energy Management	7	.....	7	50	.....	50	30	.....	30
Office of Surface Mining Reclamation and Enforcement	27	.....	27	491	.....	491	407	.....	407
<b>Total--Land and Minerals Management</b>	<b>156</b>	<b>3</b>	<b>154</b>	<b>1,452</b>	<b>30</b>	<b>1,422</b>	<b>1,386</b>	<b>-94</b>	<b>1,479</b>
Water and Science:									
Bureau of Reclamation:									
Water and Related Resources	65	.....	65	463	.....	463	521	.....	521
Other	34	30	4	388	235	154	869	290	579
Central Utah Project	(**)	.....	(**)	10	.....	10	10	.....	10
United States Geological Survey	81	.....	81	680	.....	680	719	.....	719
<b>Total--Water and Science</b>	<b>180</b>	<b>30</b>	<b>150</b>	<b>1,542</b>	<b>235</b>	<b>1,307</b>	<b>2,118</b>	<b>290</b>	<b>1,828</b>
Fish and Wildlife and Parks:									
United States Fish and Wildlife Service	199	.....	199	1,754	.....	1,754	1,759	.....	1,759
National Park Service	230	.....	230	1,940	.....	1,940	1,798	.....	1,798
<b>Total--Fish and Wildlife and Parks</b>	<b>428</b>	<b>.....</b>	<b>428</b>	<b>3,694</b>	<b>.....</b>	<b>3,694</b>	<b>3,557</b>	<b>.....</b>	<b>3,557</b>
Bureau of Indian Affairs and Bureau of Indian Education	152	(**)	152	1,834	1	1,834	1,580	(**)	1,579
Departmental Offices:									
Mineral Leasing and Associated Payments	114	.....	114	1,327	.....	1,327	1,423	.....	1,423
Other	93	.....	93	541	.....	541	288	.....	288
Insular Affairs	19	.....	19	246	.....	246	271	.....	271
Office of the Special Trustee for American Indians	24	.....	24	227	.....	227	117	.....	117
Department-Wide Programs	136	.....	136	558	.....	558	440	.....	440
Other	18	.....	18	123	.....	123	111	.....	111
Proprietary Receipts from the Public	.....	423	-423	.....	3,551	-3,551	.....	3,786	-3,786
Intrabudgetary Transactions	-44	.....	-44	-145	.....	-145	-116	.....	-116
<b>Total--Department of the Interior</b>	<b>1,276</b>	<b>456</b>	<b>821</b>	<b>11,396</b>	<b>3,816</b>	<b>7,580</b>	<b>11,175</b>	<b>3,982</b>	<b>7,193</b>
<b>Department of Justice:</b>									
General Administration	94	.....	94	279	.....	279	139	.....	139
Legal Activities and U.S. Marshals:									
General Legal Activities	61	.....	61	583	.....	583	541	.....	541
United States Attorneys	152	.....	152	1,294	.....	1,294	1,226	.....	1,226
United States Marshals Service	87	.....	87	750	.....	750	736	.....	736
Assets Forfeiture Fund	223	.....	223	1,979	.....	1,979	821	.....	821
Other	152	.....	152	167	.....	167	1,246	.....	1,246
Federal Bureau of Investigation	648	.....	648	5,274	.....	5,274	5,178	.....	5,178
Drug Enforcement Administration	179	.....	179	1,534	.....	1,534	1,488	.....	1,488
Bureau of Alcohol, Tobacco, Firearms, and Explosives	86	.....	86	779	.....	779	709	.....	709
Federal Prison System	578	30	548	4,906	250	4,656	4,722	252	4,470
Office of Justice Programs:									
State and Local Law Enforcement Assistance	53	.....	53	740	.....	740	878	.....	878
Community Oriented Policing Services	21	.....	21	170	.....	170	227	.....	227

**Table 5. Outlays of the U.S. Government, May 2015 and Other Periods - Continued**

Classification	This Month			Current Fiscal Year to Date			Prior Fiscal Year to Date		
	Gross Outlays	Applicable Receipts	Outlays	Gross Outlays	Applicable Receipts	Outlays	Gross Outlays	Applicable Receipts	Outlays
<b>Department of Justice: - Continued</b>									
Crime Victims Fund	52	.....	52	427	.....	427	463	.....	463
Other	89	.....	89	590	.....	590	639	.....	639
Other	65	.....	65	563	.....	563	435	.....	435
Proprietary Receipts from the Public	.....	35	-35	.....	1,489	-1,489	.....	317	-317
Intrabudgetary Transactions	-35	.....	-35	-738	.....	-738	453	.....	453
Offsetting Governmental Receipts	.....	46	-46	.....	341	-341	.....	351	-351
<b>Total--Department of Justice</b>	<b>2,506</b>	<b>111</b>	<b>2,395</b>	<b>19,296</b>	<b>2,079</b>	<b>17,217</b>	<b>19,899</b>	<b>921</b>	<b>18,978</b>
<b>Department of Labor:</b>									
Employment and Training Administration:									
Training and Employment Services	254	.....	254	2,037	.....	2,037	2,023	.....	2,023
Office of Job Corps	159	.....	159	1,100	.....	1,100	1,054	.....	1,054
Community Service Employment for Older Americans	32	.....	32	282	.....	282	273	.....	273
Federal Unemployment Benefits and Allowances	36	.....	36	341	.....	341	346	.....	346
Federal Additional Unemployment Compensation									
Program-Recovery Act	-1	.....	-1	-6	.....	-6	-8	.....	-8
State Unemployment Insurance and Employment Service									
Operations	-45	.....	-45	-72	.....	-72	226	.....	226
Payments to the Unemployment Trust Fund	.....	.....	.....	61	.....	61	5,028	.....	5,028
Advances to the Unemployment Trust Fund and Other Funds	.....	.....	.....	.....	.....	.....	10	.....	10
Program Administration	18	.....	18	70	.....	70	64	.....	64
Unemployment Trust Fund:									
Federal-State Unemployment Insurance:									
State Unemployment Benefits	2,497	.....	2,497	22,429	.....	22,429	31,678	.....	31,678
State Administrative Expenses	361	.....	361	2,639	.....	2,639	2,508	.....	2,508
Federal Administrative Expenses	18	.....	18	355	.....	355	335	.....	335
Other	26	.....	26	95	.....	95	99	.....	99
<b>Total--Unemployment Trust Fund</b>	<b>2,903</b>	<b>.....</b>	<b>2,903</b>	<b>25,518</b>	<b>.....</b>	<b>25,518</b>	<b>34,620</b>	<b>.....</b>	<b>34,620</b>
Other	62	.....	62	324	.....	324	374	.....	374
<b>Total--Employment and Training Administration</b>	<b>3,419</b>	<b>.....</b>	<b>3,419</b>	<b>29,657</b>	<b>.....</b>	<b>29,657</b>	<b>44,011</b>	<b>.....</b>	<b>44,011</b>
Pension Benefit Guaranty Corporation	509	573	-64	4,054	4,724	-670	3,985	3,662	324
Employment Standards Administration	(**)	.....	(**)	(**)	.....	(**)	1	.....	1
Office of Workers' Compensation Programs:									
Special Benefits	72	.....	72	-732	.....	-732	-833	.....	-833
Energy Employees Occupational Illness Compensation Fund	76	.....	76	687	.....	687	703	.....	703
Special Benefits for Disabled Coal Miners	9	.....	9	79	.....	79	87	.....	87
Black Lung Disability Trust Fund	20	.....	20	189	.....	189	149	.....	149
Other	29	.....	29	242	.....	242	234	.....	234
Wage and Hour Division	29	.....	29	185	.....	185	178	.....	178
Occupational Safety and Health Administration	46	.....	46	375	.....	375	351	.....	351
Mine Safety and Health Administration	35	.....	35	253	.....	253	234	.....	234
Bureau of Labor Statistics	49	.....	49	355	.....	355	339	.....	339
Departmental Management	16	.....	16	222	.....	222	254	.....	254
Other	30	.....	30	215	.....	215	204	.....	204
Proprietary Receipts from the Public	.....	(**)	(**)	.....	-2	2	.....	6	-6
Intrabudgetary Transactions	-64	.....	-64	-544	.....	-544	-5,762	.....	-5,762
<b>Total--Department of Labor</b>	<b>4,274</b>	<b>574</b>	<b>3,700</b>	<b>35,238</b>	<b>4,722</b>	<b>30,516</b>	<b>44,138</b>	<b>3,668</b>	<b>40,470</b>
<b>Department of State:</b>									
Administration of Foreign Affairs:									
Diplomatic and Consular Programs	651	.....	651	5,402	.....	5,402	5,425	.....	5,425
Educational and Cultural Exchange Programs	51	.....	51	397	.....	397	380	.....	380
Embassy Security, Construction, and Maintenance	-139	.....	-139	713	.....	713	1,126	.....	1,126
Payment to Foreign Service Retirement and Disability Fund									
.....	.....	.....	.....	40	.....	40	159	.....	159
Foreign Service Retirement and Disability Fund	77	.....	77	616	.....	616	611	.....	611
Other	-440	.....	-440	79	.....	79	176	.....	176
<b>Total--Administration of Foreign Affairs</b>	<b>200</b>	<b>.....</b>	<b>200</b>	<b>7,247</b>	<b>.....</b>	<b>7,247</b>	<b>7,877</b>	<b>.....</b>	<b>7,877</b>
International Organizations and Conferences	49	.....	49	1,313	.....	1,313	1,544	.....	1,544
Global Health and Child Survival	563	.....	563	4,741	.....	4,741	5,178	.....	5,178
Migration and Refugee Assistance	334	.....	334	1,618	.....	1,618	1,846	.....	1,846
International Narcotics Control and Law Enforcement	99	.....	99	772	.....	772	811	.....	811
Andean Counterdrug Programs	(**)	.....	(**)	10	.....	10	22	.....	22
Other	35	.....	35	292	.....	292	279	.....	279
Proprietary Receipts from the Public	.....	4	-4	.....	46	-46	.....	52	-52
Intrabudgetary Transactions	45	.....	45	-153	.....	-153	-313	.....	-313
<b>Total--Department of State</b>	<b>1,325</b>	<b>4</b>	<b>1,321</b>	<b>15,841</b>	<b>46</b>	<b>15,795</b>	<b>17,243</b>	<b>52</b>	<b>17,191</b>

**Table 5. Outlays of the U.S. Government, May 2015 and Other Periods - Continued**

Classification	This Month			Current Fiscal Year to Date			Prior Fiscal Year to Date		
	Gross Outlays	Applicable Receipts	Outlays	Gross Outlays	Applicable Receipts	Outlays	Gross Outlays	Applicable Receipts	Outlays
<b>Department of Transportation:</b>									
Office of the Secretary	83	.....	83	494	.....	494	473	.....	473
Federal Aviation Administration:									
Operations	346	.....	346	2,140	.....	2,140	1,763	.....	1,763
Airport and Airway Trust Fund:									
Grants-In-Aid for Airports	218	.....	218	2,011	.....	2,011	2,044	.....	2,044
Facilities and Equipment	214	.....	214	1,658	.....	1,658	1,751	.....	1,751
Research, Engineering, and Development	12	.....	12	100	.....	100	83	.....	83
Trust Fund Share of FAA Operations	400	.....	400	4,200	.....	4,200	4,600	.....	4,600
Total--Airport and Airway Trust Fund	844	.....	844	7,969	.....	7,969	8,478	.....	8,478
Other	49	8	41	-13	-20	7	-67	175	-243
Total--Federal Aviation Administration	1,239	8	1,231	10,096	-20	10,116	10,174	175	9,999
Federal Highway Administration:									
Highway Trust Fund:									
Federal-Aid Highways	3,222	.....	3,222	23,134	.....	23,134	24,301	.....	24,301
Other	(**)	.....	(**)	5	.....	5	6	3	3
Highway Infrastructure Investment, Recovery Act	10	.....	10	57	.....	57	125	.....	125
Other Programs	47	.....	47	440	.....	440	12,321	.....	12,321
Total--Federal Highway Administration	3,280	.....	3,280	23,636	.....	23,636	36,753	3	36,751
Federal Motor Carrier Safety Administration	36	.....	36	351	.....	351	335	.....	335
National Highway Traffic Safety Administration	78	.....	78	579	.....	579	569	.....	569
Federal Railroad Administration:									
Operating Subsidy Grants to the National Railroad Passenger Corporation									
	.....	.....	.....	188	.....	188	270	.....	270
Capital and Debt Service Grants to the National Railroad Passenger Corporation									
	79	.....	79	655	.....	655	558	.....	558
Capital Assistance for High Speed Rail Corridors and Intercity Passenger Rail Service									
	69	.....	69	532	.....	532	643	.....	643
Other	41	.....	41	290	.....	290	300	(**)	300
Total--Federal Railroad Administration	189	.....	189	1,664	.....	1,664	1,771	(**)	1,771
Federal Transit Administration:									
Formula Grants	4	.....	4	27	.....	27	64	.....	64
Capital Investment Grants	321	.....	321	1,406	.....	1,406	1,167	.....	1,167
Transit Formula Grants	597	.....	597	5,193	.....	5,193	5,458	.....	5,458
Transit Capital Assistance, Recovery Act	8	.....	8	77	.....	77	128	.....	128
Other	79	.....	79	380	.....	380	492	.....	492
Total--Federal Transit Administration	1,009	.....	1,009	7,084	.....	7,084	7,309	.....	7,309
Maritime Administration	48	(**)	48	<sup>1</sup> 352	8	344	158	7	151
Other	42	3	40	267	20	247	249	18	231
Proprietary Receipts from the Public	.....	17	-17	.....	73	-73	.....	43	-43
Intrabudgetary Transactions:									
Payment from the General Fund, Highway Trust Fund									
	.....	.....	.....	.....	.....	.....	-11,693	.....	-11,693
Other	(**)	.....	(**)	(**)	.....	(**)	-1	.....	-1
Offsetting Governmental Receipts	.....	46	-46	.....	120	-120	.....	86	-86
<b>Total--Department of Transportation</b>	<b>6,003</b>	<b>73</b>	<b>5,930</b>	<b>44,523</b>	<b>201</b>	<b>44,322</b>	<b>46,099</b>	<b>333</b>	<b>45,766</b>
<b>Department of the Treasury:</b>									
Departmental Offices:									
Exchange Stabilization Fund	5	(**)	4	9	44	-35	.....	78	-78
Grants for Specified Energy Property in Lieu of Tax									
Credit	391	.....	391	1,535	.....	1,535	2,215	.....	2,215
Housing and Economic Recovery Programs	176	.....	176	176	.....	176	3	.....	3
Troubled Asset Relief Program	335	.....	335	2,479	.....	2,479	2,980	.....	2,980
Other	94	.....	94	1,137	.....	1,137	1,416	.....	1,416
Bureau of the Fiscal Service:									
Financial Management Service:									
Payment to the Resolution Funding Corporation									
	.....	.....	.....	1,976	.....	1,976	1,976	.....	1,976
Financial Agent Services	68	.....	68	421	.....	421	385	.....	385
Interest Paid to Credit Financing Accounts	.....	.....	.....	.....	.....	.....	1	.....	1
Claims, Judgments, and Relief Acts	168	.....	168	2,119	.....	2,119	1,282	.....	1,282
Other	19	2	18	441	6	435	1,567	2	1,566
Total--Financial Management Service	256	2	254	4,958	6	4,952	5,212	2	5,210
Bureau of the Public Debt	11	.....	11	542	.....	542	358	.....	358
Total--Bureau of the Fiscal Service	266	2	265	5,500	6	5,494	5,570	2	5,568

**Table 5. Outlays of the U.S. Government, May 2015 and Other Periods - Continued**

Classification	This Month			Current Fiscal Year to Date			Prior Fiscal Year to Date		
	Gross Outlays	Applicable Receipts	Outlays	Gross Outlays	Applicable Receipts	Outlays	Gross Outlays	Applicable Receipts	Outlays
<b>Department of the Treasury: - Continued</b>									
Federal Financing Bank	-15	.....	-15	-739	.....	-739	-582	.....	-582
Alcohol and Tobacco Tax and Trade Bureau:									
Salaries and Expenses	8	.....	8	64	.....	64	62	.....	62
Internal Revenue Collections for Puerto Rico	27	.....	27	226	.....	226	208	.....	208
Bureau of Engraving and Printing	-11	.....	-11	-35	.....	-35	-32	.....	-32
United States Mint	239	301	-62	1,930	2,350	-420	2,087	2,333	-246
Internal Revenue Service:									
Taxpayer Services	183	.....	183	1,494	.....	1,494	1,539	.....	1,539
Enforcement	362	.....	362	3,143	.....	3,143	3,199	.....	3,199
Operations Support	316	.....	316	2,718	.....	2,718	2,725	.....	2,725
Build America Bond Payments, Recovery Act	412	.....	412	2,695	.....	2,695	2,685	.....	2,685
Refundable Premium Tax Credits and Cost Sharing Reductions	2,144	.....	2,144	15,961	.....	15,961	4,654	.....	4,654
Payment Where Earned Income Credit Exceeds Liability for Tax	1,028	.....	1,028	59,277	.....	59,277	58,980	.....	58,980
Payment Where Child Tax Credit Exceeds Liability for Tax	363	.....	363	20,230	.....	20,230	21,028	.....	21,028
Payment Where American Opportunity Tax Credit Exceeds Liability for Tax	95	.....	95	4,092	.....	4,092	4,147	.....	4,147
Refunding Internal Revenue Collections, Interest	71	.....	71	703	.....	703	679	.....	679
Other	102	.....	102	884	(**)	884	845	1	844
Total--Internal Revenue Service	5,076	.....	5,076	111,196	(**)	111,196	100,481	1	100,480
Comptroller of the Currency	75	3	72	665	1,023	-358	665	520	145
Interest on the Public Debt:									
Interest on Treasury Debt Securities (Gross):									
Public Issues (Accrual Basis)	26,805	.....	26,805	154,155	.....	154,155	167,090	.....	167,090
Special Issues (Cash Basis)	5,888	.....	5,888	71,056	.....	71,056	88,964	.....	88,964
Total--Interest on Treasury Debt Securities (Gross)	32,693	.....	32,693	225,211	.....	225,211	256,054	.....	256,054
Total--Interest on the Public Debt	32,693	.....	32,693	225,211	.....	225,211	256,054	.....	256,054
Other	8	.....	8	63	.....	63	58	.....	58
Proprietary Receipts from the Public	.....	-183	183	.....	13,474	-13,474	.....	66,357	-66,357
Intrabudgetary Transactions	-99	.....	-99	-1,383	.....	-1,383	-2,239	.....	-2,239
<b>Total--Department of the Treasury</b>	<b>39,268</b>	<b>124</b>	<b>39,144</b>	<b>348,034</b>	<b>16,897</b>	<b>331,137</b>	<b>368,944</b>	<b>69,291</b>	<b>299,654</b>
<b>Department of Veterans Affairs:</b>									
Joint DOD-VA Medical Facility Demonstration Fund	29	.....	29	249	.....	249	238	.....	238
Veterans Health Administration:									
Veterans Choice Fund, Veterans Health Administration	1	.....	1	84	.....	84	.....	.....	.....
Medical Services	3,984	.....	3,984	32,859	.....	32,859	29,827	.....	29,827
Medical Support and Compliance	444	.....	444	3,886	.....	3,886	3,740	.....	3,740
Medical Facilities	389	.....	389	3,298	.....	3,298	3,448	.....	3,448
Other	93	35	58	793	295	498	720	279	441
Benefits Programs:									
Public Enterprise Funds:									
Housing Accounts	(**)	1	-1	3	12	-9	3	14	-11
Other	79	76	3	647	610	37	638	619	19
Compensation and Pensions	6,331	.....	6,331	49,498	.....	49,498	51,261	.....	51,261
Readjustment Benefits	1,065	.....	1,065	9,374	.....	9,374	9,804	.....	9,804
Veterans Housing Benefit Program Fund	70	.....	70	796	.....	796	2,118	.....	2,118
Insurance Funds:									
National Service Life	81	.....	81	686	.....	686	644	.....	644
Veterans Special Life	14	2	12	118	59	59	114	64	50
Other	8	.....	8	39	.....	39	47	.....	47
Total--Benefits Programs	7,650	79	7,571	61,161	681	60,479	64,630	697	63,933
Departmental Administration:									
Construction	154	.....	154	1,171	.....	1,171	806	.....	806
Information Technology Systems	288	.....	288	2,553	.....	2,553	2,296	.....	2,296
General Operating Expenses	180	.....	180	1,597	(**)	1,597	1,505	1	1,504
Other	84	.....	84	785	.....	785	666	.....	666
Proprietary Receipts from the Public:									
National Service Life	.....	6	-6	.....	52	-52	.....	21	-21
Other	.....	276	-276	.....	2,653	-2,653	.....	2,186	-2,186
Intrabudgetary Transactions	-5	.....	-5	-4	.....	-4	-11	.....	-11
<b>Total--Department of Veterans Affairs</b>	<b>13,290</b>	<b>396</b>	<b>12,894</b>	<b>108,431</b>	<b>3,681</b>	<b>104,750</b>	<b>107,865</b>	<b>3,184</b>	<b>104,682</b>

**Table 5. Outlays of the U.S. Government, May 2015 and Other Periods - Continued**

Classification	This Month			Current Fiscal Year to Date			Prior Fiscal Year to Date		
	Gross Outlays	Applicable Receipts	Outlays	Gross Outlays	Applicable Receipts	Outlays	Gross Outlays	Applicable Receipts	Outlays
<b>Corps of Engineers:</b>									
Construction	189	.....	189	1,354	.....	1,354	1,282	.....	1,282
Operation and Maintenance	149	.....	149	1,243	.....	1,243	1,075	.....	1,075
Flood Control and Coastal Emergencies	42	.....	42	457	.....	457	564	.....	564
Harbor Maintenance Trust Fund	92	.....	92	738	.....	738	653	.....	653
Rivers and Harbors Contributed Funds	37	.....	37	263	.....	263	250	.....	250
Other	59	.....	59	973	.....	973	854	.....	854
Proprietary Receipts from the Public	.....	56	-56	.....	604	-604	.....	290	-290
Intrabudgetary Transactions	-1	.....	-1	(**)	.....	(**)	(**)	.....	(**)
<b>Total--Corps of Engineers</b>	<b>567</b>	<b>56</b>	<b>510</b>	<b>5,028</b>	<b>604</b>	<b>4,424</b>	<b>4,677</b>	<b>290</b>	<b>4,387</b>
<b>Other Defense Civil Programs:</b>									
Military Retirement:									
Payment to Military Retirement Fund	.....	.....	.....	75,562	.....	75,562	72,885	.....	72,885
Military Retirement Fund	4,741	.....	4,741	37,753	.....	37,753	41,037	.....	41,037
Retiree Health Care:									
Payment to Department of Defense Medicare-Eligible Retiree Health Care Fund									
Retiree Health Care Fund	.....	.....	.....	4,005	.....	4,005	4,250	.....	4,250
Department of Defense Medicare-Eligible Retiree Health Care Fund									
Care Fund	763	.....	763	6,957	.....	6,957	6,343	.....	6,343
Educational Benefits	32	.....	32	264	.....	264	282	.....	282
Other	20	.....	20	160	.....	160	140	.....	140
Proprietary Receipts from the Public	.....	2	-2	.....	13	-13	.....	9	-9
Intrabudgetary Transactions	-1,097	.....	-1,097	-80,623	.....	-80,623	-82,227	.....	-82,227
<b>Total--Other Defense Civil Programs</b>	<b>4,459</b>	<b>2</b>	<b>4,457</b>	<b>44,077</b>	<b>13</b>	<b>44,064</b>	<b>42,710</b>	<b>9</b>	<b>42,701</b>
<b>Environmental Protection Agency:</b>									
Science and Technology	59	.....	59	494	.....	494	518	.....	518
Environmental Programs and Management	187	.....	187	1,669	.....	1,669	1,749	.....	1,749
State and Tribal Assistance Grants	269	.....	269	3,011	.....	3,011	2,823	.....	2,823
Payment to the Hazardous Substance Superfund	.....	.....	.....	981	.....	981	938	.....	938
Hazardous Substance Superfund	-52	.....	-52	-865	.....	-865	494	.....	494
Other	38	(**)	38	104	29	75	100	29	72
Proprietary Receipts from the Public	.....	1	-1	.....	270	-270	.....	78	-78
Intrabudgetary Transactions	-17	.....	-17	-941	.....	-941	-918	.....	-918
Offsetting Governmental Receipts	.....	3	-3	.....	20	-20	.....	17	-17
<b>Total--Environmental Protection Agency</b>	<b>483</b>	<b>4</b>	<b>479</b>	<b>4,453</b>	<b>319</b>	<b>4,134</b>	<b>5,706</b>	<b>124</b>	<b>5,581</b>
<b>Executive Office of the President:</b>									
The White House	4	.....	4	37	.....	37	36	.....	36
Office of Management and Budget	7	.....	7	58	.....	58	55	.....	55
Unanticipated Needs	-11,499	.....	-11,499	-11,492	.....	-11,492	9	.....	9
Other	16	.....	16	154	.....	154	145	.....	145
Proprietary Receipts from the Public	.....	(**)	(**)	.....	(**)	(**)	.....	(**)	(**)
Intrabudgetary Transactions	(**)	.....	(**)	(**)	.....	(**)	(**)	.....	(**)
<b>Total--Executive Office of the President</b>	<b>-11,472</b>	<b>(**)</b>	<b>-11,472</b>	<b>-11,242</b>	<b>(**)</b>	<b>-11,242</b>	<b>245</b>	<b>(**)</b>	<b>244</b>
<b>General Services Administration:</b>									
Real Property Activities	3	.....	3	-550	.....	-550	-417	.....	-417
Supply and Technology Activities	154	.....	154	-208	.....	-208	372	.....	372
General Activities	10	.....	10	139	.....	139	52	.....	52
Proprietary Receipts from the Public	.....	31	-31	.....	92	-92	.....	108	-108
Intrabudgetary Transactions	-1	.....	-1	-4	.....	-4	-6	.....	-6
<b>Total--General Services Administration</b>	<b>166</b>	<b>31</b>	<b>136</b>	<b>-623</b>	<b>92</b>	<b>-715</b>	<b>1</b>	<b>108</b>	<b>-107</b>
<b>International Assistance Programs:</b>									
Millennium Challenge Corporation	55	.....	55	454	.....	454	726	.....	726
International Security Assistance:									
Pakistan Counterinsurgency Capability Fund									
Foreign Military Financing Program	112	.....	112	4,777	.....	4,777	4,433	.....	4,433
Economic Support Fund	281	.....	281	3,475	.....	3,475	2,754	.....	2,754
Other	65	5	60	611	21	589	745	68	677
<b>Total--International Security Assistance</b>	<b>458</b>	<b>5</b>	<b>453</b>	<b>8,863</b>	<b>21</b>	<b>8,842</b>	<b>8,357</b>	<b>68</b>	<b>8,289</b>
Multilateral Assistance:									
Contribution to the International Development Association									
Association	.....	.....	.....	1,288	.....	1,288	5	.....	5
Other	24	.....	24	1,856	.....	1,856	922	.....	922
<b>Total--Multilateral Assistance</b>	<b>24</b>	<b>.....</b>	<b>24</b>	<b>3,144</b>	<b>.....</b>	<b>3,144</b>	<b>927</b>	<b>.....</b>	<b>927</b>



**Table 5. Outlays of the U.S. Government, May 2015 and Other Periods - Continued**

Classification	This Month			Current Fiscal Year to Date			Prior Fiscal Year to Date		
	Gross Outlays	Applicable Receipts	Outlays	Gross Outlays	Applicable Receipts	Outlays	Gross Outlays	Applicable Receipts	Outlays
<b>International Assistance Programs: - Continued</b>									
Agency for International Development:									
Development Assistance Program	203	.....	203	1,695	.....	1,695	1,417	.....	1,417
Assistance for Europe, Eurasia and Central Asia	7	.....	7	105	.....	105	277	.....	277
International Disaster Assistance	208	.....	208	1,718	.....	1,718	1,062	.....	1,062
Operating Expenses	136	.....	136	809	.....	809	811	.....	811
Other	81	.....	81	21	.....	21	35	.....	35
Proprietary Receipts from the Public	.....	1	-1	.....	2	-2	.....	1	-1
Intrabudgetary Transactions	5	.....	5	7	.....	7	-37	.....	-37
<b>Total--Agency for International Development</b>	<b>640</b>	<b>1</b>	<b>640</b>	<b>4,355</b>	<b>2</b>	<b>4,353</b>	<b>3,565</b>	<b>1</b>	<b>3,563</b>
Overseas Private Investment Corporation:									
Overseas Private Investment Corporation Accounts	6	23	-17	57	124	-67	52	126	-74
Proprietary Receipts from the Public	.....	4	-4	.....	76	-76	.....	98	-98
<b>Total--Overseas Private Investment Corporation</b>	<b>6</b>	<b>26</b>	<b>-21</b>	<b>57</b>	<b>200</b>	<b>-143</b>	<b>52</b>	<b>224</b>	<b>-172</b>
Peace Corps	33	(**)	33	260	2	257	236	(**)	235
International Monetary Programs	318	.....	318	1,084	.....	1,084	-77	1	-78
Military Sales Program:									
Foreign Military Sales Trust Fund	1,634	.....	1,634	16,845	.....	16,845	17,498	.....	17,498
Other	2	.....	2	45	32	13	32	42	-10
Proprietary Receipts from the Public	.....	2,143	-2,143	.....	18,191	-18,191	.....	18,526	-18,526
Other	5	(**)	5	71	1	70	64	1	63
<b>Total--International Assistance Programs</b>	<b>3,175</b>	<b>2,176</b>	<b>999</b>	<b>35,177</b>	<b>18,450</b>	<b>16,727</b>	<b>31,379</b>	<b>18,864</b>	<b>12,515</b>
<b>National Aeronautics and Space Administration:</b>									
Science	398	.....	398	3,329	.....	3,329	3,184	.....	3,184
Aeronautics	45	.....	45	369	.....	369	360	.....	360
Exploration	280	.....	280	3,060	.....	3,060	2,492	.....	2,492
Cross Agency Support	204	.....	204	1,812	.....	1,812	1,806	.....	1,806
Space Operations	208	.....	208	2,280	.....	2,280	2,467	.....	2,467
Other	98	.....	98	779	.....	779	764	.....	764
Proprietary Receipts from the Public	.....	(**)	(**)	.....	1	-1	.....	3	-3
Intrabudgetary Transactions	(**)	.....	(**)	-1	.....	-1	-1	.....	-1
<b>Total--National Aeronautics and Space Administration</b>	<b>1,232</b>	<b>(**)</b>	<b>1,232</b>	<b>11,628</b>	<b>1</b>	<b>11,627</b>	<b>11,072</b>	<b>3</b>	<b>11,069</b>
<b>National Science Foundation:</b>									
Research and Related Activities	417	.....	417	3,188	.....	3,188	3,269	.....	3,269
Education and Human Resources	74	.....	74	530	.....	530	556	.....	556
Other	46	.....	46	362	.....	362	379	.....	379
Proprietary Receipts from the Public	.....	7	-7	.....	28	-28	.....	19	-19
<b>Total--National Science Foundation</b>	<b>538</b>	<b>7</b>	<b>531</b>	<b>4,081</b>	<b>28</b>	<b>4,053</b>	<b>4,204</b>	<b>19</b>	<b>4,184</b>
<b>Office of Personnel Management:</b>									
Government Payment for Annuity, Employees Health and Life Insurance Benefits									
Civil Service Retirement and Disability Fund	6,784	.....	6,784	54,457	.....	54,457	52,916	.....	52,916
Employees Life Insurance Fund	175	547	-372	1,797	2,415	-618	1,964	2,829	-865
Employees and Retired Employees Health Benefits Fund	3,396	3,623	-227	31,377	31,245	133	30,146	30,340	-193
Other	-4	.....	-4	82	.....	82	285	.....	285
Proprietary Receipts from the Public	.....	1	-1	.....	5	-5	.....	7	-7
Intrabudgetary Transactions:									
Postal Service Contributions	.....	.....	.....	-765	.....	-765	-773	.....	-773
Civil Service Retirement and Disability Fund:									
Other	-4	.....	-4	-31	.....	-31	-31	.....	-31
<b>Total--Office of Personnel Management</b>	<b>11,337</b>	<b>4,171</b>	<b>7,166</b>	<b>94,682</b>	<b>33,665</b>	<b>61,017</b>	<b>92,001</b>	<b>33,175</b>	<b>58,826</b>
<b>Small Business Administration:</b>									
Salaries and Expenses	42	.....	42	30	(**)	30	138	(**)	138
Business Loans Program	6	1	5	417	8	409	577	7	570
Disaster Loans Program	2	(**)	2	246	1	246	264	1	263
Other	12	2	10	112	12	100	44	13	32
Proprietary Receipts from the Public	.....	(**)	(**)	.....	1,865	-1,865	.....	1,124	-1,124
Intrabudgetary Transactions	(**)	.....	(**)	(**)	.....	(**)	(**)	.....	(**)
<b>Total--Small Business Administration</b>	<b>62</b>	<b>3</b>	<b>59</b>	<b>806</b>	<b>1,886</b>	<b>-1,080</b>	<b>1,024</b>	<b>1,145</b>	<b>-121</b>
<b>Social Security Administration:</b>									
Payments to Social Security Trust Funds	17	.....	17	22,367	.....	22,367	18,179	.....	18,179
Supplemental Security Income Program	5,128	.....	5,128	39,164	.....	39,164	42,815	.....	42,815
Federal Old-Age and Survivors Insurance Trust Fund (Off-Budget):									
Benefit Payments	61,861	.....	61,861	485,635	.....	485,635	462,075	.....	462,075
Administrative Expenses	307	.....	307	2,371	.....	2,371	2,199	.....	2,199
<b>Total--Federal Old-Age and Survivors Insurance Trust Fund (Off-Budget)</b>	<b>62,168</b>	<b>.....</b>	<b>62,168</b>	<b>488,006</b>	<b>.....</b>	<b>488,006</b>	<b>464,274</b>	<b>.....</b>	<b>464,274</b>

**Table 5. Outlays of the U.S. Government, May 2015 and Other Periods - Continued**

Classification	This Month			Current Fiscal Year to Date			Prior Fiscal Year to Date		
	Gross Outlays	Applicable Receipts	Outlays	Gross Outlays	Applicable Receipts	Outlays	Gross Outlays	Applicable Receipts	Outlays
<b>Social Security Administration: - Continued</b>									
Federal Disability Insurance Trust Fund (Off-Budget):									
Benefit Payments	12,100	.....	12,100	95,216	.....	95,216	94,100	.....	94,100
Administrative Expenses	226	.....	226	1,862	.....	1,862	1,776	.....	1,776
<b>Total--Federal Disability Insurance Trust Fund (Off-Budget)</b>	<b>12,326</b>	<b>.....</b>	<b>12,326</b>	<b>97,079</b>	<b>.....</b>	<b>97,079</b>	<b>95,877</b>	<b>.....</b>	<b>95,877</b>
Other	21	.....	21	157	.....	157	237	.....	237
Proprietary Receipts from the Public:									
On-Budget	.....	262	-262	.....	1,658	-1,658	.....	1,773	-1,773
Off-Budget	.....	8	-8	.....	65	-65	.....	108	-108
Intrabudgetary Transactions:									
Off-Budget <sup>2</sup>	-17	.....	-17	-22,365	.....	-22,365	-18,178	.....	-18,178
<b>Total--Social Security Administration</b>	<b>79,643</b>	<b>270</b>	<b>79,373</b>	<b>624,406</b>	<b>1,723</b>	<b>622,683</b>	<b>603,204</b>	<b>1,881</b>	<b>601,322</b>
<b>Independent Agencies:</b>									
Broadcasting Board of Governors	55	-2	57	468	-3	471	457	-1	458
Bureau of Consumer Financial Protection	34	.....	34	334	(**)	334	275	(**)	275
Corporation for National and Community Service	63	-2	65	629	1	628	639	1	637
Corporation for Public Broadcasting	.....	.....	.....	445	.....	445	445	.....	445
District of Columbia:									
Courts	27	(**)	27	197	(**)	197	193	.....	193
General and Special Payments	16	1	14	426	31	395	395	(**)	394
Equal Employment Opportunity Commission	26	(**)	26	236	1	234	217	1	216
Export-Import Bank of the United States	-5	33	-38	-297	279	-576	969	934	35
Federal Communications Commission:									
Universal Service Fund	721	.....	721	5,750	.....	5,750	6,079	.....	6,079
Spectrum Auction Program Account	(**)	.....	(**)	(**)	.....	(**)	1	.....	1
Other	34	2	32	186	13	173	175	19	156
Federal Deposit Insurance Corporation:									
Deposit Insurance Fund	-553	.....	-553	-6,454	.....	-6,454	-6,692	.....	-6,692
FSLIC Resolution Fund	(**)	(**)	(**)	2	(**)	1	2	3	-1
<b>Total--Federal Deposit Insurance Corporation</b>	<b>-553</b>	<b>(**)</b>	<b>-553</b>	<b>-6,453</b>	<b>(**)</b>	<b>-6,453</b>	<b>-6,689</b>	<b>3</b>	<b>-6,692</b>
Federal Drug Control Programs	17	.....	17	154	.....	154	152	.....	152
Federal Housing Finance Agency	18	.....	18	164	.....	164	164	.....	164
Institute of Museum and Library Services	16	(**)	16	143	(**)	143	155	(**)	155
Intelligence Community Management Account	21	.....	21	300	.....	300	320	.....	320
Legal Services Corporation	32	.....	32	241	.....	241	201	.....	201
National Archives and Records Administration	29	2	27	247	16	230	243	15	228
National Credit Union Administration	33	69	-37	278	868	-590	-771	1,628	-2,399
National Endowment for the Arts	12	(**)	12	92	(**)	91	88	(**)	88
National Endowment for the Humanities	11	(**)	11	91	(**)	91	86	(**)	86
National Labor Relations Board	21	(**)	21	176	(**)	176	169	(**)	169
Nuclear Regulatory Commission	83	112	-29	684	673	10	646	597	49
Postal Service:									
Off-Budget:									
Public Enterprise Funds	5,332	6,883	-1,550	49,957	53,667	-3,710	48,426	50,977	-2,551
Other	(**)	.....	(**)	259	.....	259	256	.....	256
Other	.....	.....	.....	100	.....	100	78	.....	78
Railroad Retirement Board:									
Federal Windfall Subsidy	3	.....	3	21	.....	21	24	.....	24
Federal Payments to the Railroad Retirement Accounts	(**)	.....	(**)	558	.....	558	469	.....	469
Railroad Unemployment Insurance Trust Fund:									
Benefit Payments	5	.....	5	53	.....	53	63	.....	63
Transfer To Administrative Funds	(**)	.....	(**)	7	.....	7	7	.....	7
Rail Industry Pension Fund:									
Benefit Payments	429	.....	429	3,402	.....	3,402	3,343	.....	3,343
Advances from FOASDI Fund	.....	.....	.....	.....	.....	.....	-499	.....	-499
OASDI Certifications	-2	.....	-2	-12	.....	-12	495	.....	495
Transfer to Administrative Funds	5	.....	5	35	.....	35	34	.....	34
Other	(**)	.....	(**)	-1	.....	-1	1	.....	1
National Railroad Retirement Investment Trust:									
Administrative Expenses	6	.....	6	45	.....	45	49	.....	49
Transfers to the Railroad Retirement Trust Funds from the National Railroad Retirement Investment Trust	.....	.....	.....	697	.....	697	862	.....	862

**Table 5. Outlays of the U.S. Government, May 2015 and Other Periods - Continued**

Classification	This Month			Current Fiscal Year to Date			Prior Fiscal Year to Date		
	Gross Outlays	Applicable Receipts	Outlays	Gross Outlays	Applicable Receipts	Outlays	Gross Outlays	Applicable Receipts	Outlays
<b>Independent Agencies: - Continued</b>									
Railroad Social Security Equivalent Benefit Account:									
Benefit Payments	585	.....	585	4,678	.....	4,678	4,531	.....	4,531
Transfer To Administrative Funds	3	.....	3	17	.....	17	15	.....	15
Other	(**)	.....	(**)	10	.....	10	11	.....	11
Proprietary Receipts from the Public	.....	412	-412	.....	509	-509	.....	2,896	-2,896
Intrabudgetary Transactions:									
Other	(**)	.....	(**)	-1,255	.....	-1,255	-1,331	.....	-1,331
Total--Railroad Retirement Board	1,035	412	622	8,255	509	7,746	8,075	2,896	5,179
Securities and Exchange Commission	115	(**)	115	434	(**)	434	472	1	471
Smithsonian Institution	74	.....	74	634	(**)	634	660	(**)	660
Tennessee Valley Authority	2,842	2,847	-5	27,996	27,520	476	33,062	34,417	-1,355
Other	159	25	134	2,051	407	1,643	1,995	370	1,625
<b>Total--Independent Agencies</b>	<b>10,268</b>	<b>10,383</b>	<b>-115</b>	<b>94,175</b>	<b>83,984</b>	<b>10,190</b>	<b>97,632</b>	<b>91,858</b>	<b>5,774</b>
<b>Undistributed Offsetting Receipts:</b>									
Other Interest	.....	(**)	(**)	.....	(**)	(**)	.....	(**)	(**)
Employer Share, Employee Retirement:									
Department of Health and Human Services:									
Federal Hospital Insurance Trust Fund:									
Federal Employer Contributions	-286	.....	-286	-2,285	.....	-2,285	-2,295	.....	-2,295
Postal Service Employer Contributions	-52	.....	-52	-411	.....	-411	-397	.....	-397
Department of State:									
Foreign Service Retirement and Disability Fund	-26	.....	-26	-229	.....	-229	-226	.....	-226
Other Defense Civil Programs:									
Military Retirement Fund	-1,721	.....	-1,721	-19,352	.....	-19,352	-19,976	.....	-19,976
Department of Defense Medicare-Eligible Retiree Health Care Fund									
Care Fund	.....	.....	.....	-7,229	.....	-7,229	-7,650	.....	-7,650
Office of Personnel Management:									
Civil Service Retirement and Disability Fund	-2,133	.....	-2,133	-18,013	.....	-18,013	-16,247	.....	-16,247
Social Security Administration:									
Federal Old-Age and Survivors Insurance Trust Fund:									
Federal Employer Contributions	-1,179	.....	-1,179	-8,958	.....	-8,958	-8,815	.....	-8,815
Federal Disability Insurance Trust Fund:									
Federal Employer Contributions	-200	.....	-200	-1,521	.....	-1,521	-1,498	.....	-1,498
Other	(**)	.....	(**)	-2	.....	-2	-4	.....	-4
Total--Employer Share, Employee Retirement	-5,598	.....	-5,598	-58,000	.....	-58,000	-57,108	.....	-57,108
Interest Received by Trust Funds:									
Judicial Branch:									
Judicial Survivors Annuity Fund	1	.....	1	13	.....	13	-8	.....	-8
Department of Health and Human Services:									
Federal Hospital Insurance Trust Fund	-25	.....	-25	-4,419	.....	-4,419	-4,535	.....	-4,535
Federal Supplementary Medical Insurance Trust Fund	-20	.....	-20	-1,409	.....	-1,409	-1,250	.....	-1,250
Department of Homeland Security:									
Oil Spill Liability Trust Fund	-12	.....	-12	-31	.....	-31	-26	.....	-26
Other	(**)	.....	(**)	-3	.....	-3	-4	.....	-4
Department of Labor:									
Unemployment Trust Fund	-6	.....	-6	-443	.....	-443	-426	.....	-426
Department of State:									
Foreign Service Retirement and Disability Fund	(**)	.....	(**)	-314	.....	-314	-327	.....	-327
Department of Transportation:									
Airport and Airway Trust Fund	-7	.....	-7	-145	.....	-145	-138	.....	-138
Department of Veterans Affairs:									
National Service Life Insurance Fund	-1	.....	-1	-123	.....	-123	-144	.....	-144
United States Government Life Insurance Fund	(**)	.....	(**)	(**)	.....	(**)	(**)	.....	(**)
Corps of Engineers	-17	.....	-17	-63	.....	-63	-80	.....	-80
Other Defense Civil Programs:									
Military Retirement Fund	-3,275	.....	-3,275	5,630	.....	5,630	-5,904	.....	-5,904
Educational Benefits Fund	-14	.....	-14	-36	.....	-36	-55	.....	-55
Armed Forces Retirement Home	-1	.....	-1	-2	.....	-2	-2	.....	-2
Environmental Protection Agency	(**)	.....	(**)	-17	.....	-17	-35	.....	-35
Office of Personnel Management:									
Civil Service Retirement and Disability Fund	.....	.....	.....	-14,818	.....	-14,818	-15,756	.....	-15,756
Social Security Administration:									
Federal Old-Age and Survivors Insurance Trust Fund	-50	.....	-50	-46,650	.....	-46,650	-48,185	.....	-48,185
Federal Disability Insurance Trust Fund	-25	.....	-25	-1,548	.....	-1,548	-2,178	.....	-2,178
Independent Agencies:									
Railroad Retirement Board	-5	.....	-5	-47	.....	-47	-23	.....	-23

**Table 5. Outlays of the U.S. Government, May 2015 and Other Periods - Continued**

Classification	This Month			Current Fiscal Year to Date			Prior Fiscal Year to Date		
	Gross Outlays	Applicable Receipts	Outlays	Gross Outlays	Applicable Receipts	Outlays	Gross Outlays	Applicable Receipts	Outlays
<b>Undistributed Offsetting Receipts: - Continued</b>									
Other	-2	.....	-2	-11	.....	-11	-13	.....	-13
Other	7	.....	7	-24	.....	-24	-103	.....	-103
Total--Interest Received by Trust Funds	-3,452	.....	-3,452	-64,460	.....	-64,460	-79,194	.....	-79,194
Rents and Royalties on the Outer Continental Shelf Lands	.....	82	-82	.....	2,677	-2,677	.....	3,986	-3,986
<b>Total--Undistributed Offsetting Receipts</b>	<b>-9,050</b>	<b>82</b>	<b>-9,132</b>	<b>-122,460</b>	<b>2,677</b>	<b>-125,138</b>	<b>-136,302</b>	<b>3,986</b>	<b>-140,288</b>
<b>Total Outlays</b>	<b>323,912</b>	<b>29,141</b>	<b>294,771</b>	<b>2,733,259</b>	<b>264,116</b>	<b>2,469,144</b>	<b>2,707,553</b>	<b>334,431</b>	<b>2,373,122</b>
<b>Total On-Budget</b>	<b>245,556</b>	<b>22,250</b>	<b>223,306</b>	<b>2,179,002</b>	<b>210,383</b>	<b>1,968,619</b>	<b>2,177,574</b>	<b>283,345</b>	<b>1,894,229</b>
<b>Total Off-Budget</b>	<b>78,356</b>	<b>6,891</b>	<b>71,465</b>	<b>554,257</b>	<b>53,733</b>	<b>500,525</b>	<b>529,979</b>	<b>51,086</b>	<b>478,894</b>
<b>Total Surplus (+) or Deficit (-)</b>			<b>-82,385</b>			<b>-365,156</b>			<b>-436,384</b>
<b>Total On-Budget</b>			<b>-72,283</b>			<b>-379,665</b>			<b>-451,206</b>
<b>Total Off-Budget</b>			<b>-10,102</b>			<b>+14,508</b>			<b>+14,822</b>

**MEMORANDUM**

Receipts Offset Against Outlays (In Millions)

	Current Fiscal Year to Date	Comparable Period Prior Fiscal Year
Proprietary Receipts	120,281	186,289
Intrabudgetary Transactions	421,123	441,048
Governmental Receipts	7,831	6,139
<b>Total Receipts Offset Against Outlays</b>	<b>549,235</b>	<b>633,476</b>

1 Outlays have been increased by \$5 million to reflect additional reporting by the Department of Transportation, Maritime Administration for the month of April 2015.

2 Includes FICA and SECA tax credits, non-contributory military service credits, special benefits for the aged and credit for the unnegotiated OASI benefit

checks.

Note: Details may not add to totals due to rounding.

... No Transactions

(\*\*) Less than absolute value of \$500,000

**Table 6. Means of Financing the Deficit or Disposition of Surplus by the U.S. Government, May 2015 and Other Periods**

Assets and Liabilities Directly Related to Budget Off-Budget Activity	Net Transactions (- denotes net reduction of either liability or asset accounts)			Account Balances Current Fiscal Year		
	This Month	Fiscal Year to Date		Beginning of		Close of This Month
		This Year	Prior Year	This Year	This Month	
<b>Liability Accounts:</b>						
Borrowing from the Public:						
Treasury Securities, Issued Under General Financing Authorities:						
Debt Held by the Public	-975	267,735	561,751	12,784,971	13,053,681	13,052,706
Intragovernmental Holdings	1,266	61,045	217,024	5,039,100	5,098,879	5,100,145
Total Treasury Securities Outstanding	292	328,780	778,775	17,824,071	18,152,560	18,152,852
Plus Premium on Treasury Securities	-380	1,067	-1,526	34,211	35,657	35,277
Less Discount on Treasury Securities	-229	-1,303	6,650	90,118	89,043	88,815
Total Treasury Securities Net of Premium and Discount	140	331,150	770,599	17,768,163	18,099,173	18,099,313
Agency Securities, Issued Under Special Financing Authorities (See Schedule B; for Other Agency Borrowing, See Schedule C)						
Total Federal Securities	25	628	-1,219	23,860	24,464	24,489
	165	331,778	769,380	17,792,023	18,123,637	18,123,802
Deduct:						
Federal Securities Held as Investments of Government Accounts (See Schedule D)						
Less Discount on Federal Securities Held as Investments of Government Accounts	1,237	60,977	221,855	5,039,265	5,099,005	5,100,242
Net Federal Securities Held as Investments of Government Accounts	-65	-693	4,691	26,677	26,050	25,985
Total Borrowing from the Public	1,303	61,670	217,163	5,012,588	5,072,955	5,074,257
Accrued Interest Payable to the Public	-1,138	270,109	552,217	12,779,436	13,050,682	13,049,545
Allocations of Special Drawing Rights	-13,379	-1,478	-291	53,839	65,740	52,361
Deposit Funds	-562	-3,252	226	52,358	49,669	49,106
Miscellaneous Liability Accounts (Includes Checks Outstanding Etc.)	27,364	171,035	-116,334	12,154	155,826	183,190
	-4,803	199	1,904	8,166	13,167	8,364
<b>Total Liability Accounts</b>	<b>7,482</b>	<b>436,613</b>	<b>437,721</b>	<b>12,905,954</b>	<b>13,335,085</b>	<b>13,342,566</b>
<b>Asset Accounts (Deduct)</b>						
Cash and Monetary Assets:						
U.S. Treasury Operating Cash:						
Federal Reserve Account <sup>1</sup>	-74,922	40,645	-59,492	158,302	273,869	198,947
Balance	-74,922	40,645	-59,492	158,302	273,869	198,947
Special Drawing Rights:						
Total Holdings	-568	-3,293	251	53,148	50,423	49,855
SDR Certificates Issued to Federal Reserve Banks	.....	.....	.....	-5,200	-5,200	-5,200
Balance	-568	-3,293	251	47,948	45,223	44,655
Reserve Position on the U.S. Quota in the IMF:						
U.S. Subscription to International Monetary Fund:						
Direct Quota Payments	(**)	(**)	.....	54,424	54,424	54,424
Maintenance of Value Adjustments	-670	-3,879	269	8,385	5,177	4,506
Letter of Credit Issued to IMF	-83	-4,060	-3,640	-49,658	-53,635	-53,718
Dollar Deposits with the IMF	1	-8	(**)	-161	-170	-169
Receivable/Payable (-) for Interim Maintenance of Value						
Adjustments	559	3,000	-187	1,798	4,240	4,799
Balance	-194	-4,947	-3,558	14,789	10,036	9,842
Loans to International Monetary Fund	.....	-3,050	391	14,212	11,162	11,162
Other Cash and Monetary Assets	112	-140	-434	25,849	25,597	25,709
Total Cash and Monetary Assets	-75,572	29,216	-62,842	261,100	365,887	290,315
Non-Federal Securities of the National Railroad Retirement Investment Trust						
Net Activity, Guaranteed Loan Financing (See Schedule E)	350	-166	1,831	25,678	25,162	25,512
Net Activity, Direct Loan Financing (See Schedule E)	-394	135	7,941	1,993	2,522	2,128
Miscellaneous Asset Accounts	1,122	42,979	53,156	1,061,797	1,103,654	1,104,776
	-409	-708	244	786	<sup>2</sup> 487	78
<b>Total Asset Accounts</b>	<b>-74,904</b>	<b>71,455</b>	<b>330</b>	<b>1,351,353</b>	<b>1,497,712</b>	<b>1,422,808</b>
<b>Excess of Liabilities (+) or Assets (-)</b>	<b>82,385</b>	<b>365,157</b>	<b>437,392</b>	<b>11,554,601</b>	<b>11,837,373</b>	<b>11,919,758</b>
Transactions Not Applied to Current Year's Surplus or Deficit (See Schedule A for Details)						
	.....	-1	-1,008	.....	-1	-1
<b>Total Budget and Off-Budget Federal Entities (Financing of Deficit (+) or Disposition of Surplus (-))</b>	<b>82,385</b>	<b>365,156</b>	<b>436,384</b>	<b>11,554,601</b>	<b>11,837,372</b>	<b>11,919,757</b>

1 Major sources of information used to determine Treasury's operating cash balance include Federal Reserve Banks, Treasury Regional Finance Centers, Internal Revenue Service Centers, various electronic systems, and information on the Public Debt. Information is presented on a modified cash basis. Deposits are reflected as received and withdrawals are reflected as processed.

2 This amount was increased by \$5 million to reflect additional reporting by the

Department of Transportation, Maritime Administration for the month of April 2015.

Note: Details may not add to totals due to rounding.

... No Transactions

(\*\*) Less than absolute value of \$500,000

**Table 6. Schedule A-Analysis of Change in Excess of Liabilities of the U.S. Government, May 2015 and Other Periods**

Classification	[\$ millions]		
	This Month	Fiscal Year to Date	
		This Year	Prior Year
<b>Excess of Liabilities Beginning of Period:</b>			
Based on Composition of Unified Budget in Preceding Period	11,837,368	11,554,591	11,070,365
Adjustments During Current Fiscal Year for Changes in Composition of Unified Budget:			
Revisions by Federal Agencies to the Prior Budget Results	5	9	42
Excess of Liabilities Beginning of Period (Current Basis)	11,837,373	11,554,601	11,070,408
Budget Surplus (-) or Deficit:			
Based on Composition of Unified Budget in Prior Fiscal Year	82,385	365,156	436,384
Total Surplus (-) or Deficit (Table 2)	82,385	365,156	436,384
Total-On-Budget (Table 2)	72,283	379,665	451,206
Total-Off-Budget (Table 2)	10,102	-14,508	-14,822
Transactions Not Applied to Current Year's Surplus or Deficit:			
Premium/Discount on Buyback of U.S. Treasury Securities	.....	1	.....
Reclassification of Aged Unreconciled Accounts	.....	(**)	1,008
Total-Transactions Not Applied to Current Year's Surplus or Deficit	.....	1	1,008
<b>Excess of Liabilities Close of Period</b>	<b>11,919,758</b>	<b>11,919,758</b>	<b>11,507,799</b>

Note: Details may not add to totals due to rounding.  
 ... No Transactions

(\*\*) Less than absolute value of \$500,000

**Table 6. Schedule B-Securities Issued by Federal Agencies Under Special Financing Authorities, May 2015 and Other Periods**

Classification	[\$ millions]					
	This Month	Net Transactions (-) denotes net reduction of liability accounts		Account Balances Current Fiscal Year		
		Fiscal Year to Date		Beginning of		Close of
	This Year	Prior Year	This Year	This Month	This Month	
<b>Agency Securities, Issued Under Special Financing Authorities:</b>						
Obligations Guaranteed by the United States, Issued By:						
Department of Housing and Urban Development:						
Federal Housing Administration	.....	.....	.....	19	19	19
Obligations Not Guaranteed by the United States, Issued By:						
Legislative Branch:						
Architect of the Capitol	1	-2	-2	106	103	103
Independent Agencies:						
Federal Communications Commission	.....	.....	.....	(**)	(**)	(**)
National Archives and Records Administration	.....	-10	-9	116	106	106
Tennessee Valley Authority	24	640	-1,208	23,620	24,236	24,260
<b>Total Agency Securities</b>	<b>25</b>	<b>628</b>	<b>-1,219</b>	<b>23,860</b>	<b>24,464</b>	<b>24,489</b>

Note: Details may not add to totals due to rounding.  
 ... No Transactions

(\*\*) Less than absolute value of \$500,000

**Table 6. Schedule C (Memorandum)-Federal Agency Borrowing Financed Through the Issue of Treasury Securities, May 2015 and Other Periods**

Classification	[\$ millions]					
	Transactions			Account Balances Current Fiscal Year		
	This Month	Fiscal Year to Date		Beginning of		Close of This Month
This Year		Prior Year	This Year	This Month		
<b>Borrowing from the US Treasury:</b>						
Department of Agriculture:						
Farm Service Agency:						
Commodity Credit Corporation	-191	-3,241	1,590	9,811	6,761	6,570
Agricultural Credit Insurance Fund	207	1,391	733	8,257	9,441	9,648
Farm Storage Facility Loans	5	26	218	994	1,015	1,019
Emergency Boll Weevil Loan Fund	.....	4	.....	2	5	5
Rural Housing Service:						
Rural Housing Insurance	59	497	380	16,369	16,807	16,866
Rural Community Facility Loans Fund	73	262	-72	5,517	5,705	5,778
Multifamily Housing Revitalization Loan Account	1	6	-47	240	245	246
Rural Business - Cooperative Service:						
Rural Business and Industry Loans	.....	-13	-18	68	56	56
Rural Development Loan Fund	1	-5	-13	316	310	311
Rural Economic Development Loan Fund	6	12	2	169	175	181
Renewable Energy Guaranteed Loan Account	.....	.....	.....	(**)	(**)	(**)
Rural Microenterprise Investment Loans	1	3	3	22	24	25
Rural Utilities Service:						
Rural Water and Waste Disposal Fund	68	-45	-568	12,257	12,145	12,213
Rural Electrification and Telecommunications Fund	20	-556	-690	12,308	11,732	11,752
Rural Telephone Bank	.....	-46	-62	293	247	247
Distance Learning and Telemedicine Program	18	-176	-51	1,345	1,151	1,169
Foreign Agricultural Service	.....	.....	.....	748	748	748
Department of Commerce:						
National Oceanic and Atmospheric Administration:						
Fisheries Finance	.....	80	30	511	591	591
State and Local Implementation Fund	.....	18	.....	22	40	40
National Telecommunications and Information Administration:						
Public Safety Trust Fund	.....	.....	.....	779	779	779
Department of Defense--Military Programs:						
Family Housing Improvement Loans	.....	60	83	1,391	1,451	1,451
Department of Education:						
College Housing and Academic Facilities Loans	.....	(**)	(**)	32	32	32
Federal Direct Student Loans	.....	99,079	104,327	855,279	954,358	954,358
Teach Grant Loans	.....	49	54	555	605	605
Temporary Student Loan Purchase Authority	.....	-266	-178	66,274	66,007	66,007
Federal Family Education Loans	.....	.....	.....	43,254	43,254	43,254
Department of Energy:						
Bonneville Power Administration Fund	46	456	365	4,242	4,652	4,698
Western Area Power Administration - Recovery Act	.....	5	31	92	97	97
Advanced Technology Vehicles Manufacturing Loans	.....	.....	-4	27	27	27
Title 17 Innovative Technology Loans	.....	11	109	91	102	102
Department of Health and Human Services:						
Consumer Operated and Oriented Plan	.....	163	249	857	1,019	1,019
Consumer Operated and Oriented Plan Program Contingency Fund	.....	206	47	37	243	243
Department of Homeland Security:						
National Flood Insurance Fund	.....	-1,000	.....	24,000	23,000	23,000
Disaster Assistance Loan Fund	(**)	(**)	21	81	81	81
Department of Housing and Urban Development:						
Public and Indian Housing Programs:						
Low-Rent Public Housing - Loans and Other Expenses	.....	.....	.....	116	116	116
Native Hawaiian Housing Loans	.....	.....	.....	6	6	6
Housing Programs:						
Emergency Homeowners' Relief Fund	.....	.....	(**)	3	3	3
Federal Housing Administration	.....	10	.....	27,528	27,538	27,538
Green Retrofit Program for Multifamily Housing-Recovery Act	.....	.....	.....	8	8	8
Department of the Interior:						
Helium Fund	.....	.....	-44	.....	.....	.....
Bureau of Indian Affairs and Bureau of Indian Education	.....	(**)	(**)	5	5	5
Bureau of Reclamation Loan Fund	(**)	(**)	(**)	34	34	34
Assistance to American Samoa Loan Fund	.....	(**)	1	9	9	9

**Table 6. Schedule C (Memorandum)-Federal Agency Borrowing Financed Through the Issue of Treasury Securities, May 2015 and Other Periods - Continued**

Classification	[\$ millions]					
	Transactions			Account Balances Current Fiscal Year		
	This Month	Fiscal Year to Date		Beginning of		Close of This Month
This Year		Prior Year	This Year	This Month		
<b>Borrowing from the US Treasury: - Continued</b>						
Department of Labor:						
Black Lung Disability Trust Fund	.....	-160	.....	4,733	4,573	4,573
Department of State:						
Repatriation Loans	.....	1	1	4	5	5
Department of Transportation:						
Federal Highway Administration:						
Transportation Infrastructure Finance and Innovation Fund	62	866	999	7,342	8,146	8,208
Federal Railroad Administration:						
Railroad Rehabilitation and Improvement Loan Fund	8	67	45	843	902	910
Other	.....	.....	.....	(**)	(**)	(**)
Department of the Treasury:						
Departmental Offices:						
Community Development Financial Institutions Fund	(**)	13	15	53	67	67
Temporary Credit and Liquidity Program	-331	-331	.....	8,072	8,072	7,741
Troubled Asset Relief Program	.....	-676	-2,704	1,304	629	629
Small Business Lending Financing Fund	.....	.....	.....	3,212	3,212	3,212
Federal Financing Bank Revolving Fund	92	652	-5,369	56,528	57,088	57,180
Department of Veterans Affairs:						
Veterans Housing Benefit Program Fund	.....	359	242	624	983	983
Native American Veteran Housing Fund	.....	8	4	67	75	75
Vocational Rehabilitation Loan Fund	.....	1	1	1	2	2
Corps of Engineers:						
Washington Aqueduct	.....	(**)	(**)	1	1	1
Environmental Protection Agency:						
Abatement, Control, and Compliance Loan Program	.....	.....	.....	(**)	(**)	(**)
International Assistance Programs:						
International Security Assistance:						
Military Debt Reduction	.....	.....	.....	37	37	37
Agency for International Development:						
International Debt Reduction	.....	.....	.....	478	478	478
Development Credit Authority Loan Fund	.....	.....	.....	3	3	3
Overseas Private Investment Corporation	22	268	248	2,807	3,053	3,075
International Monetary Programs	.....	.....	1	7,847	7,847	7,847
Small Business Administration:						
Business Loan Fund	17	121	428	1,706	1,810	1,827
Disaster Loan Fund	50	198	340	6,051	6,198	6,248
Independent Agencies:						
Export-Import Bank of the United States	221	1,548	2,250	21,634	22,961	23,182
Federal Communications Commission:						
Spectrum Auction Loan Fund	.....	.....	(**)	.....	.....	.....
National Credit Union Administration	.....	.....	-1,825	2,600	2,600	2,600
Presidio Trust	.....	.....	.....	50	50	50
Railroad Retirement Board:						
Social Security Equivalent Benefit Account	295	2,529	2,548	3,532	5,765	6,061
Smithsonian Institution:						
John F. Kennedy Center Parking Facilities	.....	.....	.....	20	20	20
<b>Total Borrowing from the US Treasury</b>	<b>750</b>	<b>102,453</b>	<b>103,722</b>	<b>1,223,498</b>	<b>1,325,201</b>	<b>1,325,951</b>
<b>Borrowing from the Federal Financing Bank:</b>						
Department of Agriculture:						
Rural Utilities Service:						
Rural Electrification and Telecommunications Fund	112	-22	1,754	42,725	42,591	42,703
Department of Education:						
Historically Black College and University Capital Financing Fund	1	29	69	1,260	1,288	1,289
Department of Energy:						
Advanced Technology Vehicles Manufacturing Loans	.....	-325	-477	5,160	4,835	4,835
Title 17 Innovative Technology Loans	-29	-176	1,308	9,369	9,222	9,193
Department of Health and Human Services:						
Health Maintenance Organization Loan and Loan Guarantee Fund	.....	.....	.....	(**)	(**)	(**)
Department of Housing and Urban Development:						
Housing Programs:						



**Table 6. Schedule C (Memorandum)-Federal Agency Borrowing Financed Through the Issue of Treasury Securities, May 2015 and Other Periods - Continued**

Classification	Transactions			Account Balances Current Fiscal Year		
	This Month	Fiscal Year to Date		Beginning of		Close of This Month
		This Year	Prior Year	This Year	This Month	
<b>Borrowing from the Federal Financing Bank: - Continued</b>						
Federal Housing Administration	(**)	72	.....	.....	72	72
Department of Transportation:						
Federal Railroad Administration:						
Railroad Rehabilitation and Improvement Loan Fund	.....	.....	(**)	.....	.....	.....
Department of the Treasury:						
Departmental Offices:						
Community Development Financial Institutions Fund	7	51	.....	38	82	88
Department of Veterans Affairs:						
Guaranteed Transitional Housing Loans for Homeless Veterans	.....	(**)	(**)	5	5	5
General Services Administration:						
Federal Buildings Fund	.....	.....	-60	.....	.....	.....
International Assistance Programs:						
International Security Assistance:						
Foreign Military Financing Program	.....	.....	-47	.....	.....	.....
Independent Agencies:						
Postal Service	.....	.....	.....	15,000	15,000	15,000
<b>Total Borrowing from the Federal Financing Bank</b>	<b>90</b>	<b>-372</b>	<b>2,547</b>	<b>73,555</b>	<b>73,093</b>	<b>73,184</b>

Note: Details may not add to totals due to rounding.

Note: This table includes lending by the Federal Financing Bank accomplished by the purchase of agency financial assets, by the acquisition of agency debt securities, and by direct loans on behalf of an agency. The Federal Financing Bank borrows from Treasury and issues its own securities and in turn may loan

these funds to agencies in lieu of agencies borrowing directly through Treasury or issuing their own securities.

... No Transactions

(\*\*) Less than absolute value of \$500,000

**Table 6. Schedule D-Investments of Federal Government Accounts in Federal Securities, May 2015 and Other Periods**

[\$ millions]

Classification	Net Purchases or Sales (-)			Securities Held as Investments Current Fiscal Year		
	This Month	Fiscal Year to Date		Beginning of		Close of This Month
		This Year	Prior Year	This Year	This Month	
<b>Federal Funds:</b>						
Department of Agriculture	-4	34	87	143	182	178
Department of Commerce	.....	3	2	.....	3	3
Department of Defense--Military Programs:						
Defense Cooperation Account	.....	(**)	(**)	8	8	8
Department of Energy	495	401	658	55,464	55,370	55,865
Department of Health and Human Services	.....	5	3	2,101	2,106	2,106
Department of Homeland Security	25	167	.....	.....	142	167
Department of Housing and Urban Development:						
Housing Programs:						
Federal Housing Administration Fund	1,099	3,162	2,912	6,379	8,443	9,541
Government National Mortgage Association:						
Guarantees of Mortgage-Backed Securities	(**)	8,575	-336	151	8,725	8,726
Department of the Interior	430	631	-358	6,848	7,049	7,479
Department of Labor	11	821	-329	17,490	18,300	18,311
Department of State:						
Foreign Service Retirement and Disability Fund	(**)	(**)	.....	.....	.....	(**)
Department of Transportation	-138	-182	173	2,180	2,136	1,998
Department of the Treasury	-36	-11	-759	25,317	25,342	25,307
Department of Veterans Affairs:						
Veterans Reopened Insurance Fund	-3	-20	-19	199	182	179
Servicemen'S Group Life Insurance Fund	.....	(**)	(**)	1	1	1
Other Defense Civil Programs:						
Uniformed Services Retiree Health Care Fund	248	5,169	11,974	200,372	205,294	205,541
Office of Personnel Management:						
Postal Service Contributions	.....	765	5,375	48,468	49,233	49,233
Independent Agencies:						
Federal Deposit Insurance Corporation:						
Deposit Insurance Fund	554	6,482	6,822	48,750	54,678	55,232
FSLIC Resolution Fund	(**)	-1	1	827	827	827
Federal Housing Finance Agency	-14	63	59	64	141	127
National Credit Union Administration	36	609	587	11,555	12,128	12,165
Postal Service	-245	1,717	2,336	5,450	7,412	7,167
Tennessee Valley Authority	(**)	(**)	(**)	25	25	25
Other	40	534	628	17,190	17,684	17,724
Other	3,174	-1,346	1,550	13,550	9,029	12,204
Total Treasury Securities	5,671	27,579	31,366	462,532	484,440	490,111
<b>Total Federal Funds</b>	<b>5,671</b>	<b>27,579</b>	<b>31,366</b>	<b>462,532</b>	<b>484,440</b>	<b>490,111</b>
<b>Trust Funds:</b>						
Legislative Branch:						
Library of Congress	(**)	-2	4	29	26	26
United States Tax Court	.....	(**)	(**)	11	11	11
Other	-1	(**)	-1	30	31	30
Judicial Branch:						
Judicial Retirement Funds	-8	36	87	1,084	1,127	1,120
Department of Agriculture	.....	.....	61	6	6	6
Department of Defense--Military Programs:						
Voluntary Separation Incentive Fund	-8	5	6	222	235	227
Other	-13	-448	-32	875	440	427
Department of Health and Human Services:						
Federal Hospital Insurance Trust Fund	-5,998	-5,270	-6,718	202,207	202,935	196,937
Federal Supplementary Medical Insurance Trust Fund	-2,195	378	745	68,391	70,964	68,769
Other	5	51	82	3,385	3,431	3,436
Department of Homeland Security	86	519	349	5,589	6,022	6,108
Department of the Interior	(**)	-1	1	9	7	8
Department of Labor:						
Unemployment Trust Fund	15,560	14,052	7,538	35,919	34,411	49,971
Other	-9	-19	-17	63	53	44
Department of State:						
Foreign Service Retirement and Disability Fund	-49	-13	120	17,792	17,828	17,779
Other	(**)	4	(**)	43	47	47
Department of Transportation:						
Airport and Airway Trust Fund	312	1,579	54	12,759	14,026	14,337

**Table 6. Schedule D-Investments of Federal Government Accounts in Federal Securities, May 2015 and Other Periods - Continued**

[\$ millions]

Classification	Net Purchases or Sales (-)			Securities Held as Investments Current Fiscal Year		
	This Month	Fiscal Year to Date		Beginning of		Close of This Month
		This Year	Prior Year	This Year	This Month	
<b>Trust Funds: - Continued</b>						
Highway Trust Fund	-892	-2,399	8,009	10,696	9,189	8,297
Department of the Treasury	-72	531	190	1,644	2,246	2,174
Department of Veterans Affairs:						
General Post Fund, National Homes	.....	30	(**)	65	95	95
National Service Life Insurance	-69	-527	-476	5,629	5,171	5,102
United States Government Life Insurance Fund	(**)	-1	-2	7	6	6
Veterans Special Life Insurance Fund	-12	-65	-50	1,863	1,810	1,799
Corps of Engineers	48	215	414	8,439	8,607	8,654
Other Defense Civil Programs:						
Military Retirement Fund	225	51,553	61,784	483,111	534,439	534,664
Other	-11	-181	-185	1,624	1,454	1,443
Environmental Protection Agency	-300	629	636	3,887	4,816	4,516
National Aeronautics and Space Administration	.....	(**)	(**)	16	16	16
Office of Personnel Management:						
Civil Service Retirement and Disability Fund	.....	-39,014	104,554	857,169	818,154	818,154
Employees Life Insurance Fund	373	608	664	43,213	43,448	43,821
Employees and Retired Employees Health Benefits Fund	227	-142	168	23,558	23,190	23,416
Social Security Administration:						
Federal Old-Age and Survivors Insurance Trust Fund	-8,357	29,755	32,334	2,712,805	2,750,918	2,742,560
Federal Disability Insurance Trust Fund	-3,125	-18,592	-20,035	70,113	54,646	51,521
Independent Agencies:						
Harry S Truman Scholarship Foundation	(**)	-5	-10	54	49	49
Japan-United States Friendship Commission	.....	.....	.....	38	38	38
Railroad Retirement Board:						
Treasury Securities	-134	-64	142	2,670	2,740	2,606
Agency Securities	.....	1	.....	3	5	5
Other	-16	199	72	1,713	1,928	1,912
Total Treasury Securities	-4,434	33,397	190,489	4,576,730	4,614,560	4,610,127
Total Agency Securities	.....	1	.....	3	5	5
<b>Total Trust Funds</b>	<b>-4,434</b>	<b>33,398</b>	<b>190,489</b>	<b>4,576,733</b>	<b>4,614,565</b>	<b>4,610,132</b>
<b>Grand Total</b>	<b>1,237</b>	<b>60,977</b>	<b>221,855</b>	<b>5,039,265</b>	<b>5,099,005</b>	<b>5,100,242</b>

Note: Details may not add to totals due to rounding.

Note: Investments are in Treasury securities unless otherwise noted.

... No Transactions

(\*\*) Less than absolute value of \$500,000

**Table 6. Schedule E-Net Activity, Guaranteed and Direct Loan Financing, May 2015 and Other Periods**

[\$ millions]

Classification	Net Transactions (-) denotes net reduction of asset accounts			Account Balances Current Fiscal Year		
	This Month	Fiscal Year to Date		Beginning of		Close of This Month
		This Year	Prior Year	This Year	This Month	
<b>Guaranteed Loan Financing Activity:</b>						
Department of Agriculture:						
Farm Service Agency:						
Commodity Credit Corporation Export Fund	-12	8	-24	239	260	247
Agricultural Credit Insurance Fund	-4	-19	-3	-177	-192	-196
Natural Resources Conservation Service:						
Agricultural Resource Conservation Demonstration Program	.....	.....	.....	(**)	(**)	(**)
Rural Housing Service:						
Rural Community Facility Loans	-1	2	-2	-57	-54	-55
Rural Housing Insurance Fund	22	164	9	-3,667	-3,525	-3,503
Rural Business - Cooperative Service:						
Rural Business and Industry Loans	8	-14	-31	-488	-510	-501
Renewable Energy Guaranteed Loan Account	(**)	-9	-7	-22	-31	-31
Biorefinery Assistance Loan Account	.....	(**)	(**)	-22	-22	-22
Rural Utilities Service:						
Rural Water and Waste Disposal Fund	.....	(**)	(**)	-25	-25	-25
Department of Commerce:						
National Oceanic and Atmospheric Administration:						
Fishing Vessel Obligations	.....	.....	(**)	.....	.....	.....
General Administration:						
Emergency Oil, Gas, and Steel Account	.....	.....	.....	5	5	5
Department of Defense--Military Programs	.....	(**)	.....	-59	-59	-59
Department of Education:						
Office of Student Financial Assistance:						
Federal Family Education Loans	-928	-4,260	1,483	38,015	34,682	33,754
Department of Energy:						
Title 17 Innovative Technology Loans	.....	11	-37	-229	-218	-218
Department of Health and Human Services:						
Health Resources and Services Administration:						
Health Center Loans	.....	.....	(**)	-3	-3	-3
Health Education Assistance Loans	.....	.....	42	-70	-70	-70
Department of Housing and Urban Development:						
Public and Indian Housing Programs:						
Indian Housing Loans	-4	-5	(**)	-155	-156	-160
Native Hawaiian Housing Loans	(**)	-2	1	3	1	1
Community Planning and Development:						
Community Development Loans	.....	.....	4	-109	-109	-109
Housing Programs:						
FHA-Mutual Mortgage Insurance Loans	605	2,706	6,525	-15,830	-13,729	-13,124
FHA-General and Special Risk Fund	270	2,227	3,182	-4,512	-2,555	-2,285
Home Ownership Preservation Entity Fund	(**)	1	1	-18	-16	-16
Government National Mortgage Association:						
Guarantees of Mortgage-Backed Securities	-139	-798	-1,485	3,400	2,741	2,602
Department of the Interior:						
Bureau of Indian Affairs and Bureau of Indian Education	(**)	(**)	-1	-59	-59	-59
Department of Transportation:						
Office of the Secretary:						
Minority Business Resource Center Fund	.....	(**)	(**)	-1	(**)	(**)
Federal Highway Administration:						
Transportation Infrastructure Finance and Innovation Fund	.....	.....	.....	(**)	(**)	(**)
Maritime Administration:						
Maritime Guaranteed Loan (Title XI) Fund	.....	(**)	-10	-231	-231	-231
Department of the Treasury:						
Departmental Offices:						
Air Transportation Stabilization Fund	.....	.....	.....	(**)	(**)	(**)
Troubled Assets Insurance Financing Fund	.....	.....	.....	(**)	(**)	(**)
Troubled Asset Relief Program	.....	4	2	-13	-9	-9
Department of Veterans Affairs:						
Veterans Benefits Administration:						
Veterans Housing Benefit Program Fund	-116	-716	-2,053	-7,735	-8,335	-8,451

**Table 6. Schedule E-Net Activity, Guaranteed and Direct Loan Financing, May 2015 and Other Periods - Continued**

Classification	Net Transactions (-) denotes net reduction of asset accounts			Account Balances Current Fiscal Year		
	This Month	Fiscal Year to Date		Beginning of		Close of This Month
		This Year	Prior Year	This Year	This Month	
<b>Guaranteed Loan Financing Activity: - Continued</b>						
International Assistance Programs:						
Agency for International Development:						
Ukraine Export Credit Insurance Fund	.....	.....	-194	-196	-196	-196
Loan Guarantees to Israel	.....	.....	.....	-1,226	-1,226	-1,226
Urban and Environmental Credit Guaranteed Loans	1	2	2	-56	-55	-54
Microenterprise and Small Enterprise Development	(**)	.....	.....	(**)	(**)	(**)
Development Credit Authority Loan Fund	-1	-3	-5	-72	-75	-76
Loan Guarantees to Egypt	.....	.....	.....	-481	-481	-481
Tunisia Loan Fund	.....	.....	-122	-253	-253	-253
Overseas Private Investment Corporation	-13	-37	-27	149	125	112
Small Business Administration:						
Business Loan Fund	-52	891	344	-2,224	-1,281	-1,333
Independent Agencies:						
Export-Import Bank of the United States	-29	-17	349	-1,828	-1,817	-1,846
<b>Net Activity, Guaranteed Loan Financing</b>	<b>-394</b>	<b>135</b>	<b>7,941</b>	<b>1,993</b>	<b>2,522</b>	<b>2,128</b>
<b>Direct Loan Financing Activity:</b>						
Department of Agriculture:						
Farm Service Agency:						
Agricultural Credit Insurance Fund	390	393	-48	7,452	7,456	7,846
Farm Storage Facility Loans	2	6	38	776	780	781
Apple Loans Fund	(**)	(**)	(**)	(**)	(**)	(**)
Emergency Boll Weevil Loan Fund	.....	4	.....	1	5	5
Rural Housing Service:						
Rural Community Facility Loans Fund	34	255	117	4,957	5,178	5,212
Rural Housing Insurance Fund	-53	-359	-389	15,265	14,959	14,906
Multifamily Housing Revitalization Loan Account	3	16	3	211	224	226
Rural Business - Cooperative Service:						
Rural Business and Industry Loan Fund	(**)	-1	-1	42	41	41
Rural Development Loan Fund	-2	-14	-12	293	282	280
Rural Economic Development Loan Fund	2	13	17	145	156	158
Rural Microenterprise Investment Loans	1	3	2	20	23	24
Rural Utilities Service:						
Rural Water and Waste Disposal Loans	-21	-216	-66	10,812	10,618	10,597
Rural Electrification and Telecommunications Fund	-138	-1,284	1,484	50,269	49,123	48,985
Rural Telephone Bank	-4	-29	-37	248	223	219
Distance Learning and Telemedicine Program	6	15	25	1,053	1,063	1,068
Rural Development Insurance Fund	.....	.....	.....	1,065	1,065	1,065
Foreign Agricultural Service:						
P.L. 480 Direct Loan Fund	-1	-72	-150	657	586	585
International Debt Reduction	-1	-5	-6	-5	-8	-10
Department of Commerce:						
National Oceanic and Atmospheric Administration:						
Fisheries Finance	-15	12	-21	511	537	523
Department of Defense--Military Programs	-6	17	50	1,391	1,414	1,408
Department of Education:						
Office of Postsecondary Education:						
College Housing and Academic Facilities Loans	.....	(**)	-1	4	4	4
Historically Black College and University Capital Financing Fund	1	32	68	1,062	1,093	1,094
Office of Student Financial Assistance:						
Federal Direct Student Loans	2,384	53,863	65,061	797,552	849,031	851,415
Teach Grant Loans	2	36	41	535	569	571
Temporary Student Loan Purchase Authority	-926	-7,961	-6,888	101,225	94,190	93,264
Department of Energy:						
Advanced Technology Vehicles Manufacturing Loans	.....	-321	-310	5,029	4,708	4,708
Title 17 Innovative Technology Loans	1	7	1,376	8,306	8,312	8,313
Department of Health and Human Services:						
Consumer Operated and Oriented Plan	40	176	227	758	894	934
Consumer Operated and Oriented Plan Program Contingency Fund	22	135	19	31	144	166
Department of Homeland Security:						

**Table 6. Schedule E-Net Activity, Guaranteed and Direct Loan Financing, May 2015 and Other Periods - Continued**

Classification	Net Transactions (-) denotes net reduction of asset accounts			Account Balances Current Fiscal Year		
	This Month	Fiscal Year to Date		Beginning of		Close of This Month
		This Year	Prior Year	This Year	This Month	
<b>Direct Loan Financing Activity: - Continued</b>						
Disaster Assistance Loan Fund	(**)	(**)	12	8	8	8
Department of Housing and Urban Development:						
Housing Programs:						
Emergency Homeowners' Relief Fund	(**)	(**)	-1	1	1	1
FHA-Mutual Mortgage Insurance Loans	(**)	.....	(**)	-6	-6	-6
FHA-General and Special Risk Fund	(**)	79	.....	(**)	79	79
Green Retrofit Program for Multifamily Housing Fund	(**)	-5	-4	5	(**)	(**)
Department of the Interior:						
Bureau of Reclamation	.....	-3	-3	35	32	32
Bureau of Indian Affairs and Bureau of Indian Education	(**)	(**)	-1	3	3	3
Assistance to American Samoa Loan Fund	(**)	-1	-1	9	8	9
Department of State:						
Administration of Foreign Affairs:						
Repatriation Loans	(**)	-1	-1	1	-1	-1
Department of Transportation:						
Federal Highway Administration:						
Transportation Infrastructure Finance and Innovation Fund	62	-335	781	6,769	6,372	6,434
Tiger Tifia Loan Fund	.....	8	17	569	577	577
Federal Railroad Administration:						
Railroad Rehabilitation and Improvement Loan Fund	8	38	2	834	864	872
Department of the Treasury:						
Departmental Offices:						
Community Development Financial Institutions Fund	7	60	13	91	144	151
GSE Mortgage-Backed Securities Purchase Program	.....	.....	.....	4,613	4,613	4,613
Temporary Credit and Liquidity Program	-251	-846	-680	7,905	7,310	7,059
Troubled Asset Relief Program	-87	-265	-7,820	696	518	431
Small Business Lending Program	-20	-532	-360	3,174	2,662	2,642
Bureau of the Fiscal Service:						
Financial Management Service	.....	.....	.....	(**)	(**)	(**)
Department of Veterans Affairs:						
Veterans Benefits Administration:						
Veterans Housing Benefit Program Fund	-3	-19	-38	531	514	511
Native American Veteran Housing Fund	1	-1	-1	64	62	62
Transitional Housing Loans	(**)	(**)	(**)	(**)	(**)	(**)
Vocational Rehabilitation Loan Fund	(**)	(**)	(**)	1	1	1
Environmental Protection Agency:						
Abatement, Control, and Compliance Loan Program	(**)	(**)	(**)	(**)	(**)	(**)
International Assistance Programs:						
International Security Assistance:						
Foreign Military Loan Program	.....	.....	.....	-27	-27	-27
Military Debt Reduction	.....	.....	.....	37	37	37
Agency for International Development:						
International Debt Reduction	-11	-34	-12	93	70	59
Overseas Private Investment Corporation	(**)	52	-34	1,391	1,443	1,443
International Monetary Programs	-206	-208	-9	-69	-71	-277
Small Business Administration:						
Business Loan Fund	(**)	8	18	148	156	155
Disaster Loan Fund	-59	-400	-312	5,572	5,231	5,172
Independent Agencies:						
Export-Import Bank of the United States	-38	662	987	19,689	20,388	20,350
Federal Communications Commission:						
Spectrum Auction Loan Fund	(**)	(**)	3	-3	-3	-3
<b>Net Activity, Direct Loan Financing</b>	<b>1,122</b>	<b>42,979</b>	<b>53,156</b>	<b>1,061,797</b>	<b>1,103,654</b>	<b>1,104,776</b>

Note: Details may not add to totals due to rounding.

Note: Federal credit programs provide benefits to the public in the form of direct loans and loan guarantees. This table reflects cash transactions and balances of the nonbudgetary financing fund accounts that result from the disbursement of loans, collection of fees, repayment of principle, sale of collateral, interest, and subsidy received from the credit program accounts at

net present value in accordance with the Credit Reform Act of 1990. Unreimbursed costs such as administrative expenses and subsidy payments are reported on a cash basis and included within each program's budgetary totals in Table 5.

... No Transactions

(\*\*) Less than absolute value of \$500,000

**Table 7. Receipts and Outlays of the U.S. Government by Month, Fiscal Year 2015**

Classification	[\$ millions]												Fiscal Year to Date	Comparable Period Prior F.Y.	
	Oct.	Nov.	Dec.	Jan.	Feb.	March	April	May	June	July	Aug.	Sept.			
<b>Receipts:</b>															
Individual Income Taxes	106,661	85,958	145,029	177,199	40,614	85,973	288,204	85,035						1,014,673	903,024
Corporation Income Taxes	10,228	2,582	84,231	7,459	-2,866	30,481	43,230	7,340						182,685	164,840
Social Insurance and Retirement Receipts:															
Employment and General Retirement	70,394	75,868	74,623	94,995	77,210	96,797	106,733	78,965						675,585	648,743
Unemployment Insurance	3,187	3,214	770	2,519	6,831	454	9,496	15,204						41,675	43,231
Other Retirement	293	279	285	338	281	328	301	286						2,391	2,294
Excise Taxes	5,915	7,270	6,567	6,689	6,412	6,559	6,172	7,403						52,987	51,563
Estate and Gift Taxes	1,418	1,508	1,990	1,344	1,008	1,642	3,245	1,703						13,858	12,582
Customs Duties	3,485	2,964	2,791	3,023	2,525	2,627	3,430	2,548						23,393	22,125
Miscellaneous Receipts	11,136	11,794	19,040	13,176	7,374	9,327	10,990	13,903						96,740	88,337
<b>Total--Receipts This Year</b>	<b>212,719</b>	<b>191,436</b>	<b>335,327</b>	<b>306,742</b>	<b>139,388</b>	<b>234,187</b>	<b>471,801</b>	<b>212,386</b>						<b>2,103,987</b>	.....
<b>(On-Budget)</b>	<b>160,464</b>	<b>135,169</b>	<b>280,293</b>	<b>233,755</b>	<b>79,456</b>	<b>158,782</b>	<b>390,011</b>	<b>151,023</b>						<b>1,588,954</b>	.....
<b>(Off-Budget)</b>	<b>52,255</b>	<b>56,267</b>	<b>55,034</b>	<b>72,987</b>	<b>59,932</b>	<b>75,405</b>	<b>81,790</b>	<b>61,363</b>						<b>515,033</b>	.....
<i>Total--Receipts Prior Year</i>	<i>198,927</i>	<i>182,453</i>	<i>285,041</i>	<i>295,997</i>	<i>144,349</i>	<i>215,846</i>	<i>414,237</i>	<i>199,889</i>						.....	1,936,739
<i>(On-Budget)</i>	<i>148,871</i>	<i>128,657</i>	<i>230,051</i>	<i>226,228</i>	<i>86,974</i>	<i>145,924</i>	<i>335,529</i>	<i>140,789</i>						.....	1,443,023
<i>(Off-Budget)</i>	<i>50,056</i>	<i>53,796</i>	<i>54,990</i>	<i>69,769</i>	<i>57,375</i>	<i>69,922</i>	<i>78,708</i>	<i>59,100</i>						.....	493,716
<b>Outlays:</b>															
Legislative Branch	377	336	376	365	305	428	350	320						2,859	2,724
Judicial Branch	574	499	629	662	560	610	563	540						4,636	4,496
Department of Agriculture:															
Commodity Credit Corporation	3,658	2,161	1,639	817	-217	-54	-276	-216						7,513	9,278
Foreign Agricultural Service	263	46	49	48	154	96	243	98						997	949
Other	12,264	11,621	12,591	11,477	10,949	11,772	10,319	10,236						91,228	90,467
Department of Commerce	590	752	697	735	680	954	634	694						5,737	5,144
Department of Defense--Military Programs:															
Military Personnel	29,402	5,971	15,581	9,933	11,147	6,188	10,636	11,031						99,889	107,652
Operation and Maintenance	19,800	17,623	20,855	20,520	19,375	21,537	21,594	20,563						161,867	159,835
International Reconstruction and Other Assistance															
	(**)	.....	.....	(**)	.....	.....	.....	.....						(**)	1
Procurement	7,148	6,878	13,895	5,857	7,142	10,937	7,051	9,489						68,398	73,186
Research, Development, Test, and Evaluation	4,321	4,528	6,054	4,646	4,444	7,431	5,577	4,867						41,869	41,825
Military Construction	705	706	892	587	558	697	695	668						5,507	6,362
Family Housing	89	83	106	100	80	91	117	73						739	830
Revolving and Management Funds	52	-419	319	311	-78	-401	-147	-968						-1,332	2,051
Other	-610	460	-484	-306	-150	51	-82	-91						-1,211	-1,442
<b>Total Department of Defense--Military Programs</b>	<b>60,908</b>	<b>35,829</b>	<b>57,218</b>	<b>41,648</b>	<b>42,517</b>	<b>46,532</b>	<b>45,442</b>	<b>45,632</b>						<b>375,726</b>	<b>390,300</b>
Department of Education	5,241	4,781	5,504	4,296	8,712	6,925	5,159	5,089						45,707	36,000
Department of Energy	2,460	1,863	2,259	1,874	1,719	2,208	2,323	1,891						16,596	15,543
Department of Health and Human Services:															
National Institutes of Health	2,372	2,275	2,498	2,286	2,357	2,395	2,472	2,250						18,904	19,884
Centers for Medicare and Medicaid Services:															
Grants to States for Medicaid	28,024	24,710	31,494	29,023	27,010	31,756	29,102	28,476						229,595	190,950
Federal Hospital Insurance Trust Fund	28,507	14,889	23,729	30,792	23,458	17,429	24,163	22,580						185,546	183,269
Federal Supplementary Medical Insurance Trust Fund	46,802	14,189	28,841	40,329	26,032	15,361	30,688	30,261						232,504	223,631
Other	31,015	17,213	23,260	29,129	20,207	18,891	33,577	22,720						196,011	191,356
Administration for Children and Families	3,794	3,662	4,488	4,250	3,843	4,641	3,905	4,103						32,686	32,454
Other	-34,057	-20,620	-25,707	-32,149	-24,028	-22,106	-40,392	-26,434						-225,492	-217,555
Department of Homeland Security	3,965	3,036	4,753	3,178	2,770	4,270	2,666	2,934						27,573	27,798
Department of Housing and Urban Development	2,840	3,022	2,943	2,744	3,452	3,286	7,301	3,167						28,755	26,410
Department of the Interior	614	956	944	866	1,232	1,289	858	821						7,580	7,193
Department of Justice	-6,301	2,665	8,825	819	3,575	3,020	2,218	2,395						17,217	18,978
Department of Labor:															
Unemployment Trust Fund	2,972	1,882	4,000	3,563	3,377	3,682	3,137	2,903						25,518	34,620
Other	-2,997	1,413	1,265	1,483	1,139	508	1,390	797						4,999	5,850
Department of State	1,933	2,410	2,601	1,742	1,702	2,339	1,747	1,321						15,795	17,191
Department of Transportation:															
Highway Trust Fund	4,291	3,106	3,089	2,254	2,375	2,460	2,340	3,223						23,139	24,305
Other	2,436	2,640	2,765	2,309	2,462	3,257	2,607	2,707						21,183	21,461
Department of the Treasury:															
Interest on Treasury Debt Securities (Gross)	8,702	23,427	86,460	15,105	13,153	13,889	31,782	32,693						225,211	256,054

**Table 7. Receipts and Outlays of the U.S. Government by Month, Fiscal Year 2015 - Continued**

Classification	[\$ millions]												Fiscal Year to Date	Comparable Period Prior F.Y.		
	Oct.	Nov.	Dec.	Jan.	Feb.	March	April	May	June	July	Aug.	Sept.				
Outlays: - Continued																
Other	4,563	3,566	-3,429	13,092	48,729	18,697	14,256	6,451							105,926	43,600
Department of Veterans Affairs:																
Compensation and Pensions	11,395	570	11,510	6,130	6,201	984	6,376	6,331							49,498	51,261
National Service Life	82	56	88	74	75	89	95	75							634	622
Other	7,314	5,292	7,249	8,017	6,697	6,682	6,880	6,488							54,618	52,798
Corps of Engineers	682	367	684	513	520	574	575	510							4,424	4,387
Other Defense Civil Programs	11,057	761	10,213	6,164	5,752	2,142	3,518	4,457							44,064	42,701
Environmental Protection Agency	835	829	853	803	-650	609	377	479							4,134	5,581
Executive Office of the President	27	29	33	40	30	35	34	-11,472							-11,242	244
General Services Administration	-19	-218	3	-223	-144	133	-384	136							-715	-107
International Assistance Programs:																
International Security Assistance	722	1,525	1,156	2,769	519	1,228	469	453							8,842	8,289
Multilateral Assistance	437	182	65	-7	1,958	344	141	24							3,144	927
Agency for International Development	813	415	491	353	409	574	658	640							4,353	3,563
Other	106	75	607	516	-238	310	-869	-118							389	-264
National Aeronautics and Space Administration	1,415	1,330	2,329	1,276	1,208	1,543	1,294	1,232							11,627	11,069
National Science Foundation	477	474	503	483	495	538	551	531							4,053	4,184
Office of Personnel Management	8,202	7,066	7,358	7,280	8,317	7,462	8,166	7,166							61,017	58,826
Small Business Administration	58	65	69	64	-1,550	85	69	59							-1,080	-121
Social Security Administration:																
Federal Old-Age and Survivors Insurance Trust																
Fund (Off-Budget)	59,677	59,724	60,513	61,187	61,344	61,653	61,740	62,168							488,006	464,274
Federal Disability Insurance Trust Fund (Off-Budget)	11,988	11,959	11,921	12,265	12,012	12,238	12,370	12,326							97,079	95,877
Other	8,977	178	9,186	4,679	4,651	401	4,648	4,879							37,599	41,171
Independent Agencies:																
Deposit Insurance Fund	-166	191	-1,998	263	-1,530	-1,209	-1,452	-553							-6,454	-6,692
FSLIC Resolution Fund	(**)	(**)	(**)	(**)	(**)	(**)	(**)	(**)							1	-1
Postal Service:																
Off-Budget:																
Public Enterprise Funds	-20	-487	-1,739	1,031	10	-191	-764	-1,550							-3,710	-2,551
Other	50	(**)	.....	208	(**)	.....	.....	(**)							259	256
Other	71	.....	.....	.....	29	.....	.....	.....							100	78
Tennessee Valley Authority	176	21	294	-165	-180	19	317	-5							476	-1,355
Other	3,369	2,254	2,117	2,958	3,285	972	2,570	1,994							19,519	16,038
Undistributed Offsetting Receipts:																
Employer Share, Employee Retirement	-18,819	-5,325	-5,376	-5,306	-5,963	-5,950	-5,663	-5,598							-58,000	-57,108
Interest Received by Trust Funds	10,288	-1,472	-67,500	242	531	1,778	-4,874	-3,452							-64,460	-79,194
Rents and Royalties on the Outer Continental Shelf Lands	-574	63	-946	-64	-275	-475	-324	-82							-2,677	-3,986
Other	(**)	(**)	(**)	.....	.....	.....	(**)	(**)							(**)	(**)
<b>Totals This Year:</b>																
<b>Total Outlays</b>	<b>334,432</b>	<b>248,254</b>	<b>333,463</b>	<b>324,289</b>	<b>331,738</b>	<b>287,105</b>	<b>315,092</b>	<b>294,771</b>							<b>2,469,144</b>	<b>.....</b>
<b>(On-Budget)</b>	<b>271,514</b>	<b>178,516</b>	<b>311,588</b>	<b>257,510</b>	<b>259,778</b>	<b>214,910</b>	<b>251,497</b>	<b>223,306</b>							<b>1,968,619</b>	<b>.....</b>
<b>(Off-Budget)</b>	<b>62,918</b>	<b>69,738</b>	<b>21,875</b>	<b>66,779</b>	<b>71,960</b>	<b>72,195</b>	<b>63,595</b>	<b>71,465</b>							<b>500,525</b>	<b>.....</b>
<b>Total-Surplus (+) or Deficit (-)</b>	<b>-121,713</b>	<b>-56,818</b>	<b>1,864</b>	<b>-17,546</b>	<b>-192,350</b>	<b>-52,918</b>	<b>156,709</b>	<b>-82,385</b>							<b>-365,156</b>	<b>.....</b>
<b>(On-Budget)</b>	<b>-111,050</b>	<b>-43,347</b>	<b>-31,295</b>	<b>-23,755</b>	<b>-180,321</b>	<b>-56,128</b>	<b>138,514</b>	<b>-72,283</b>							<b>-379,665</b>	<b>.....</b>
<b>(Off-Budget)</b>	<b>-10,663</b>	<b>-13,471</b>	<b>33,159</b>	<b>6,208</b>	<b>-12,028</b>	<b>3,210</b>	<b>18,195</b>	<b>-10,102</b>							<b>14,508</b>	<b>.....</b>
<b>Total Borrowing from the Public</b>	<b>74,090</b>	<b>64,849</b>	<b>101,554</b>	<b>-36,839</b>	<b>88,293</b>	<b>15,323</b>	<b>-36,024</b>	<b>-1,138</b>							<b>270,109</b>	<b>552,217</b>
<b>Total-Outlays Prior Year</b>	<b>289,511</b>	<b>317,679</b>	<b>231,821</b>	<b>306,247</b>	<b>337,880</b>	<b>252,741</b>	<b>307,383</b>	<b>329,860</b>							<b>.....</b>	<b>2,373,122</b>
<b>(On-Budget)</b>	<b>225,419</b>	<b>250,867</b>	<b>214,255</b>	<b>244,403</b>	<b>269,430</b>	<b>183,532</b>	<b>245,856</b>	<b>260,468</b>							<b>.....</b>	<b>1,894,229</b>
<b>(Off-Budget)</b>	<b>64,093</b>	<b>66,813</b>	<b>17,566</b>	<b>61,844</b>	<b>68,450</b>	<b>69,208</b>	<b>61,527</b>	<b>69,392</b>							<b>.....</b>	<b>478,894</b>
<b>Total-Surplus (+) or Deficit (-) Prior Year</b>	<b>-90,584</b>	<b>-135,226</b>	<b>53,220</b>	<b>-10,250</b>	<b>-193,532</b>	<b>-36,895</b>	<b>106,853</b>	<b>-129,971</b>							<b>.....</b>	<b>-436,384</b>
<b>(On-Budget)</b>	<b>-76,547</b>	<b>-122,210</b>	<b>15,796</b>	<b>-18,174</b>	<b>-182,457</b>	<b>-37,608</b>	<b>89,673</b>	<b>-119,679</b>							<b>.....</b>	<b>-451,206</b>
<b>(Off-Budget)</b>	<b>-14,037</b>	<b>-13,017</b>	<b>37,424</b>	<b>7,925</b>	<b>-11,075</b>	<b>713</b>	<b>17,181</b>	<b>-10,292</b>							<b>.....</b>	<b>14,822</b>

Note: Details may not add to totals due to rounding.  
... No Transactions

(\*\*) Less than absolute value of \$500,000



**Table 8. Trust Fund Impact on Budget Results and Investment Holdings as of May 31, 2015**

[\$ millions]

Classification	This Month			Fiscal Year to Date			Securities Held as Investments Current Fiscal Year		
	Receipts	Outlays	Excess	Receipts	Outlays	Excess	Beginning of		Close of
							This Year	This Month	
<b>Trust Receipts, Outlays, and Investments Held:</b>									
Airport and Airway	1,131	859	272	8,794	8,064	730	12,759	14,026	14,337
Black Lung Disability	45	20	25	361	189	173	.....	.....	.....
Federal Disability Insurance	9,141	12,326	-3,185	78,488	97,079	-18,591	70,113	54,646	51,521
Federal Employees Life and Health	.....	-599	599	.....	-485	485	66,771	66,638	67,237
Federal Employees Retirement	2,449	6,871	-4,422	35,934	55,149	-19,215	876,056	837,120	837,064
Federal Hospital Insurance	17,794	22,694	-4,900	182,168	186,595	-4,427	202,207	202,935	196,937
Federal Old-Age and Survivors Insurance	53,701	62,168	-8,467	517,654	488,006	29,648	2,712,805	2,750,918	2,742,560
Federal Supplementary Medical Insurance	28,571	30,261	-1,691	229,666	232,504	-2,837	68,391	70,964	68,769
Hazardous Substance Superfund	1	-52	53	1,252	-865	2,117	3,446	4,319	4,024
Highways	2,854	3,922	-1,068	24,392	29,179	-4,788	10,696	9,189	8,297
Military Advances	2,143	1,634	510	18,191	16,845	1,346	.....	.....	.....
Military Retirement	4,996	4,741	255	89,284	37,753	51,531	483,111	534,439	534,664
Railroad Retirement	966	1,026	-60	6,111	8,871	-2,760	2,673	2,745	2,610
Unemployment	15,275	2,909	12,366	42,662	25,578	17,084	35,919	34,411	49,971
Veterans Life Insurance	8	94	-86	176	746	-571	7,500	6,988	6,907
All Other Trust	689	659	31	5,045	3,111	1,935	24,285	25,227	25,231
<b>Total Trust Fund Receipts and Outlays and Investments Held from Table 6-D</b>	<b>139,763</b>	<b>149,530</b>	<b>-9,768</b>	<b>1,240,178</b>	<b>1,188,316</b>	<b>51,862</b>	<b>4,576,733</b>	<b>4,614,565</b>	<b>4,610,132</b>
Less: Interfund Transactions	40,985	40,985	.....	484,036	484,036	.....	.....	.....	.....
Trust Fund Receipts and Outlays on the Basis of Tables 4 & 5	98,778	108,545	-9,768	756,142	704,280	51,862			
<b>Total Federal Fund Receipts and Outlays</b>	<b>113,669</b>	<b>186,287</b>	<b>-72,618</b>	<b>1,348,373</b>	<b>1,765,392</b>	<b>-417,019</b>			
Less: Interfund Transactions	61	61	.....	528	528	.....			
Federal Fund Receipts and Outlays on the Basis of Table 4 & 5	113,608	186,226	-72,618	1,347,845	1,764,863	-417,019			
<b>Net Budget Receipts &amp; Outlays</b>	<b>212,386</b>	<b>294,771</b>	<b>-82,385</b>	<b>2,103,987</b>	<b>2,469,144</b>	<b>-365,156</b>			

Note: Details may not add to totals due to rounding.

Note: Interfund receipts and outlays are transactions between Federal funds and trust funds such as Federal payments and contributions, and interest and profits on investments in Federal securities. They have no net effect on overall budget

receipts and outlays since the receipt side of such transactions is offset against budget outlays. In this table, Interfund receipts are shown as an adjustment to arrive at total receipts and outlays of trust funds respectively.  
... No Transactions

**Table 9. Summary of Receipts by Source, and Outlays by Function of the U.S. Government, May 2015 and Other Periods**

[\$ millions]			
Classification	This Month	Fiscal Year to Date	Comparable Period Prior Fiscal Year
<b>Receipts</b>			
Individual Income Taxes	85,035	1,014,673	903,024
Corporation Income Taxes	7,340	182,685	164,840
Social Insurance and Retirement Receipts:			
Employment and General Retirement	78,965	675,585	648,743
Unemployment Insurance	15,204	41,675	43,231
Other Retirement	286	2,391	2,294
Excise Taxes	7,403	52,987	51,563
Estate and Gift Taxes	1,703	13,858	12,582
Customs Duties	2,548	23,393	22,125
Miscellaneous Receipts	13,903	96,740	88,337
<b>Total</b>	<b>212,386</b>	<b>2,103,987</b>	<b>1,936,739</b>
<b>Net Outlays</b>			
National Defense	48,237	395,067	408,574
International Affairs	2,331	33,021	30,424
General Science, Space, and Technology	2,108	18,541	18,195
Energy	244	4,466	2,008
Natural Resources and Environment	2,480	21,051	22,478
Agriculture	185	19,769	23,120
Commerce and Housing Credit	-12,873	-29,444	-74,084
Transportation	7,087	53,926	56,271
Community and Regional Development	1,451	14,260	14,081
Education, Training, Employment, and Social Services	7,230	67,424	57,101
Health	37,662	309,278	260,133
Medicare	45,906	359,156	349,467
Income Security	37,274	369,208	384,104
Social Security	74,490	585,068	560,142
Veterans Benefits and Services	12,946	105,084	105,021
Administration of Justice	4,015	34,898	33,710
General Government	2,143	9,562	14,335
Net Interest	27,535	159,485	169,136
Undistributed Offsetting Receipts	-5,679	-60,677	-61,094
<b>Total</b>	<b>294,771</b>	<b>2,469,144</b>	<b>2,373,122</b>

Note: Details may not add to totals due to rounding.

# Explanatory Notes

## 1. Flow of Data into Monthly Treasury Statement

The *Monthly Treasury Statement (MTS)* is assembled from data in the central accounting system. The major sources of data include monthly accounting reports by Federal entities and disbursing officers, and daily reports from the Federal Reserve banks. These reports detail accounting transactions affecting receipts and outlays of the Federal Government and off-budget Federal entities, and their related effect on the assets and liabilities of the U.S. Government. Information is presented in the *MTS* on a modified cash basis.

## 2. Notes on Receipts

Receipts included in the report are classified into the following major categories: (1) budget receipts and (2) offsetting collections (also called applicable receipts). Budget receipts are collections from the public that result from the exercise of the Government's sovereign or governmental powers, excluding receipts offset against outlays. These collections, also called governmental receipts, consist mainly of tax receipts (including social insurance taxes), receipts from court fines, certain licenses, and deposits of earnings by the Federal Reserve System. Refunds of receipts are treated as deductions from gross receipts.

Offsetting collections are from other Government accounts or the public that are of a business-type or market-oriented nature. They are classified into two major categories: (1) offsetting collections credited to appropriations or fund accounts, and (2) offsetting receipts (i.e., amounts deposited in receipt accounts). Collections credited to appropriation or fund accounts normally can be used without appropriation action by Congress. These occur in two instances: (1) when authorized by law, amounts collected for materials or services are treated as reimbursements to appropriations and (2) in the three types of revolving funds (public enterprise, intra governmental, and trust); collections are netted against spending, and outlays are reported as the net amount.

Offsetting receipts in receipt accounts cannot be used without being appropriated. They are subdivided into two categories: (1) proprietary receipts - these collections are from the public and they are offset against outlays by agency and by function, and (2) intra governmental funds - these are payments into receipt accounts from Governmental appropriation or fund accounts. The transactions may be intrabudgetary when the payment and receipt both occur within the budget or from receipts from off-budget Federal entities in those cases where payment is made by a Federal entity whose budget authority and outlays are excluded from the budget totals.

Intrabudgetary transactions are subdivided into three categories: (1) interfund transactions, where the payments are from one fund group (either Federal funds or trust funds) to a receipt account in the other fund group; (2) Federal intrafund transactions, where the payments and receipts both occur within the Federal fund group; and (3) trust intrafund transactions, where the payments and receipts both occur within the trust fund group.

Offsetting receipts are generally deducted from budget authority and outlays by function, by subfunction, or by agency. There are four types of receipts, however, that are deducted from budget totals as undistributed offsetting receipts. They are: (1) agencies' payments (including payments by off-budget Federal entities) as employers into employees retirement funds, (2) interest received by trust funds, (3) rents and royalties on the Outer Continental Shelf lands, and (4) other interest (i.e., interest collected on Outer Continental Shelf money in deposit funds when such money is transferred into the budget).

## 3. Notes on Outlays

Outlays are generally accounted for on the basis of checks issued, electronic funds transferred, or cash payments made. Certain outlays do not require issuance of cash or checks. An example is charges made against appropriations for that part of employees' salaries withheld for taxes or savings bond allotments - these are counted as payments to the employee and credits for whatever purpose the money was withheld. Outlays are stated net of offsetting collections (including receipts of revolving and management funds) and of refunds. Interest on the public debt (public issues) is recognized on the accrual basis. Federal credit programs subject to the Federal Credit Reform Act of 1990 use the cash

basis of accounting and are divided into two components. The portion of the credit activities that involve a cost to the Government (mainly subsidies) is included within the budget program accounts. The remaining portion of the credit activities are in non-budget financing accounts. Outlays of off-budget Federal entities are excluded by law from budget totals. However, they are shown separately and combined with the on-budget outlays to display total Federal outlays.

## 4. Processing

The data on payments and collections are reported by account symbol into the central accounting system. In turn, the data are extracted from this system for use in the preparation of the *MTS*.

There are two major checks which are conducted to assure consistency of the data reported:

1. Verification of payment data. The monthly payment activity reported by Federal entities on the Statements of Transactions is compared to the payment activity of Federal entities as reported by disbursing officers.
2. Verification of collection data. Reported collections appearing on Statements of Transactions are compared to deposits as reported by Federal Reserve Banks.

## 5. Other Sources of Information About Federal Government Financial Activities

- *A Glossary of Terms Used in the Federal Budget Process, 2005* (Available from the U.S. Government Accountability Office, at calling 202-512-6000. This glossary provides a basic reference document of standardized definitions of terms used by the Federal Government in the budget making process).
- *Daily Treasury Statement* (Available on the internet at <http://www.fms.treas.gov/dts/>). The *Daily Treasury Statement* is published each working day of the Federal Government and provides data on the cash and debt operations of the Treasury.
- *Monthly Statement of the Public Debt of the United States* (Available on the internet at <http://www.treasurydirect.gov/govt/reports/pd/mspd/mspd.htm>). This publication provides detailed information concerning the public debt.
- *Treasury Bulletin* (Available from GPO, Washington, D.C. 20401 on a subscription or single copy and on the internet at [http://www.fiscal.treasury.gov/fsreports/rpt/treasBulletin/treasBulletin\\_home.htm](http://www.fiscal.treasury.gov/fsreports/rpt/treasBulletin/treasBulletin_home.htm)). Quarterly, contains a mix of narrative, tables, and charts on Treasury issues, Federal financial operations, international statistics, and special reports.
- *Budget of the United States Government, Fiscal Year 20\_\_* (Available from GPO, Washington, D.C. 20401 on a subscription basis only and on the internet at <http://www.access.gpo.gov/usbudget>). This publication is a single volume which provides budget information and contains:
  - *Appendix, The Budget of the United States Government, FY 20\_\_*
  - *The United States Budget in Brief, FY 20\_\_*
  - *Analytical Perspectives*
  - *Historical Tables*
- *Combined Statement of Receipts, Outlays, and Balances of the United States Government* (Available from Bureau of the Fiscal Service, U.S. Department of Treasury, Washington, D.C. 20227 and on the internet at [http://www.fiscal.treasury.gov/fsreports/rpt/combStmt/combStmt\\_home.htm](http://www.fiscal.treasury.gov/fsreports/rpt/combStmt/combStmt_home.htm)). This report includes budgetary results at the summary level and presents individual receipt and appropriation accounts at the detail level.

**Scheduled Release**

**The release date for the June 2015 Statement  
will be 2:00 p.m. EST July 13, 2015.**

Internet service subscribers can access the current issue of the Monthly Treasury Statement through the  
Bureau of the Fiscal Service's website:

[http://www.fiscal.treasury.gov/fsreports/rpt/mthTreasStmnt/mthTreasStmnt\\_home.htm](http://www.fiscal.treasury.gov/fsreports/rpt/mthTreasStmnt/mthTreasStmnt_home.htm)