



# Monthly Treasury Statement

of Receipts and Outlays  
of the United States Government

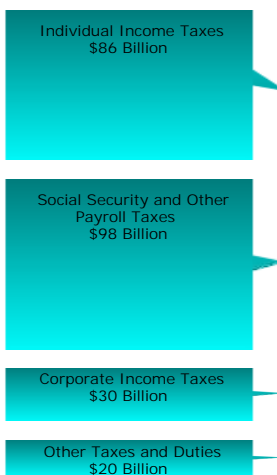
For Fiscal Year 2015 Through **March 31, 2015**, and Other Periods

## Highlight

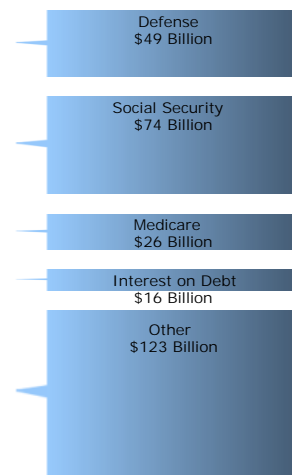
**Outlays for Military active duty and retirement, Veteran's benefits, and Supplemental Security Income, and Medicare payments to Health Maintenance Organizations and prescription drug plans were accelerated into February, because March 1, 2015, the normal payment date, fell on a non-business day.**

### Receipts, Outlays, and Surplus/Deficit for March 2015

Receipts by Source:

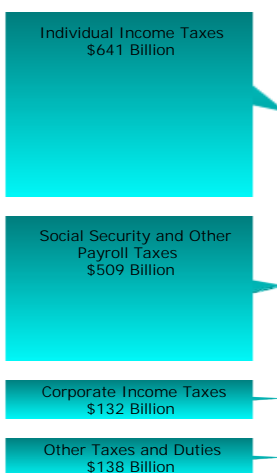


Outlays by Function:

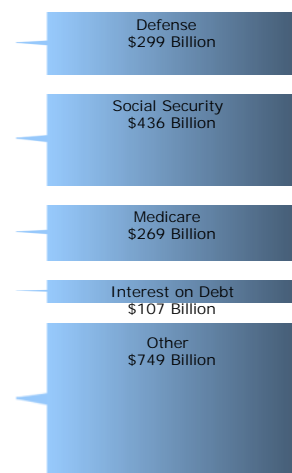


### Cumulative Receipts, Outlays, and Surplus/Deficit through Fiscal Year 2015

Receipts by Source:



Outlays by Function:



Compiled and Published by

*Department of the Treasury*  
*Bureau of the Fiscal Service*

## Contents

Summary	Page 2	Receipts/Outlays by Month	Page 32
Receipts	Page 6	Federal Trust Funds/Securities	Page 34
Outlays	Page 7	Receipts by Source/Outlays by Function	Page 35
Means of Financing	Page 21	Explanatory Notes	Page 36

## Introduction

The *Monthly Treasury Statement of Receipts and Outlays of the United States Government (MTS)* is prepared by the Bureau of the Fiscal Service, Department of the Treasury, and after approval by the Fiscal Assistant Secretary of the Treasury; is normally released on the 8th workday of the month following the reporting month. The publication is based on data provided by Federal entities, disbursing officers, and Federal Reserve banks.

### AUDIENCE

The *MTS* is published to meet the needs of those responsible for or interested in the cash position of the Treasury, those who are responsible or interested in the Government's budget results; and individuals and businesses whose operations depend upon or are related to the Government's financial operations.

### DISCLOSURE STATEMENT

This statement summarizes the financial activities of the Federal Government and off-budget Federal entities conducted in accordance with the Budget of the U.S. Government, i.e., receipts and outlays of funds, the surplus or deficit, and the means of financing the deficit or disposing of the surplus. Information is presented on a modified cash basis; receipts are accounted for on the basis of collections; refunds of receipts are treated as deductions from gross receipts; revolving and

management fund receipts, reimbursements and refunds of monies previously expended are treated as deductions from gross outlays; and interest on the public debt (public issues) is recognized on the accrual basis. Major information sources include accounting data reported by Federal entities, disbursing officers, and Federal Reserve banks.

### TRIAD OF PUBLICATIONS

The *MTS* is part of a triad of Treasury financial reports. The *Daily Treasury Statement* is published each working day of the Federal Government. It provides data on the cash and debt operations of the Treasury based upon reporting of the Treasury account balances by Federal Reserve banks. The *MTS* is a report of Government receipts and outlays, based on agency reporting. The *Combined Statement of Receipts, Outlays, and Balances of the United States Government* is the official publication of the detailed receipts and outlays of the Government. It is published annually in accordance with legislative mandates given to the Secretary of the Treasury.

### DATA SOURCES AND INFORMATION

The Explanatory Notes section of this publication provides information concerning the flow of data into the *MTS* and sources of information relevant to the *MTS*.

**Table 1. Summary of Receipts, Outlays, and the Deficit/Surplus of the U.S. Government, Fiscal Years 2014 and 2015, by Month**

	[\$ millions]		
Period	Receipts	Outlays	Deficit/Surplus (-)
<b>FY 2014</b>			
October	198,927	289,511	90,584
November	182,453	317,679	135,226
December	285,041	231,821	-53,220
January	295,997	306,247	10,250
February	144,349	337,880	193,532
March	215,846	252,741	36,895
April	414,237	307,383	-106,853
May	199,889	329,860	129,971
June	323,646	253,127	-70,519
July	214,493	309,113	94,621
August	194,248	322,925	128,677
September	351,244	245,441	-105,803
<b>Year-to-Date</b>	<b>3,020,370</b>	<b>3,503,730</b>	<b>483,359</b>
<b>FY 2015</b>			
October	212,719	334,432	121,713
November	191,436	248,254	56,818
December	335,327	<sup>1</sup> 333,463	-1,864
January	306,742	<sup>1</sup> 324,289	17,546
February	139,388	<sup>2</sup> 331,738	192,350
March	234,187	287,097	52,910
<b>Year-to-Date</b>	<b>1,419,800</b>	<b>1,859,273</b>	<b>439,473</b>

1 Outlays have been increased by \$2 million to reflect additional reporting by the Department of Defense.

2 Outlays have been increased by \$22 million to reflect additional reporting by

the Department of Defense and the Department of Transportation.  
Note: Details may not add to totals due to rounding.

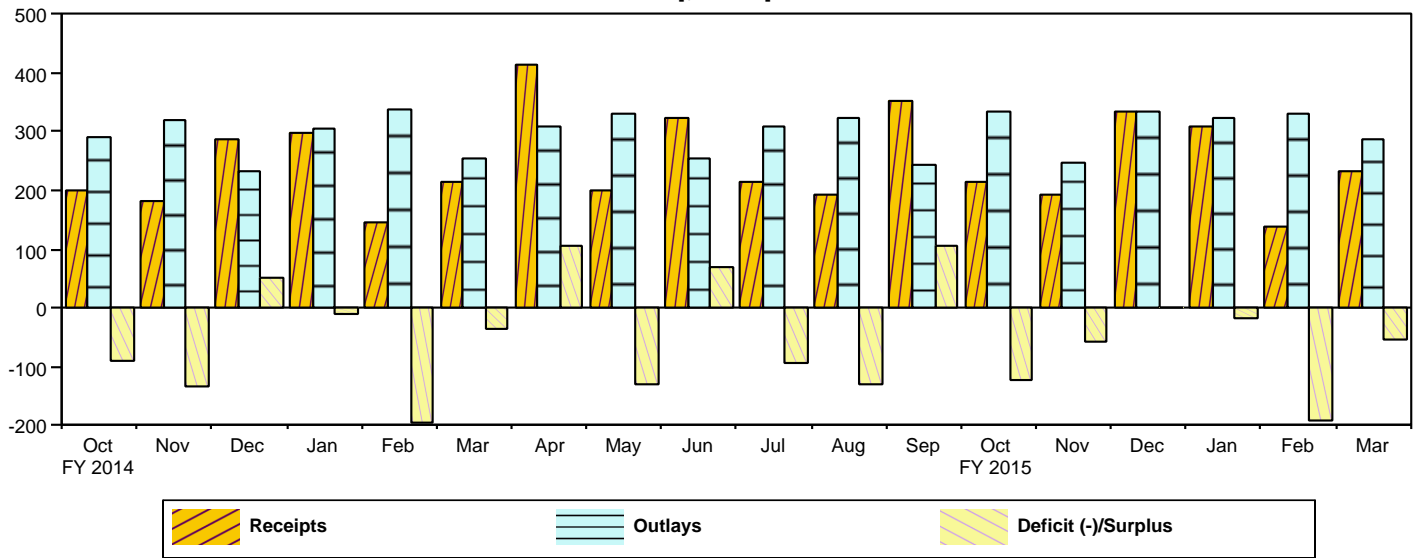
**Table 2. Summary of Budget and Off-Budget Results and Financing of the U.S. Government, March 2015 and Other Periods**

[\$ millions]					
Classification	This Month	Current Fiscal Year to Date	Budget Estimates Full Fiscal Year <sup>1</sup>	Comparable Prior Period Year to Date (2014)	Budget Estimates Next Fiscal Year (2016) <sup>1</sup>
<b>Total On-Budget and Off-Budget Results:</b>					
Total Receipts	234,187	1,419,800	3,176,072	1,322,613	3,525,179
On-Budget Receipts	158,782	1,047,920	2,410,502	966,705	2,724,214
Off-Budget Receipts	75,405	371,880	765,570	355,908	800,965
Total Outlays	287,097	1,859,273	3,758,577	1,735,879	3,999,467
On-Budget Outlays	214,902	1,493,808	3,005,957	1,387,905	3,201,064
Off-Budget Outlays	72,195	365,465	752,620	347,974	798,403
Total Surplus (+) or Deficit (-)	-52,910	-439,473	-582,505	-413,266	-474,288
On-Budget Surplus (+) or Deficit (-)	-56,120	-445,888	-595,455	-421,200	-476,850
Off-Budget Surplus (+) or Deficit (-)	+3,210	+6,415	+12,950	+7,934	+2,562
Total On-Budget and Off-Budget Financing	52,910	439,473	582,505	413,266	474,288
<b>Means of Financing:</b>					
Borrowing from the Public	15,315	307,263	726,454	632,942	602,161
Reduction of Operating Cash, Increase (-)	-65,155	58,218	-41,698	-53,803	
By Other Means	102,749	73,992	-102,251	-165,873	-127,873

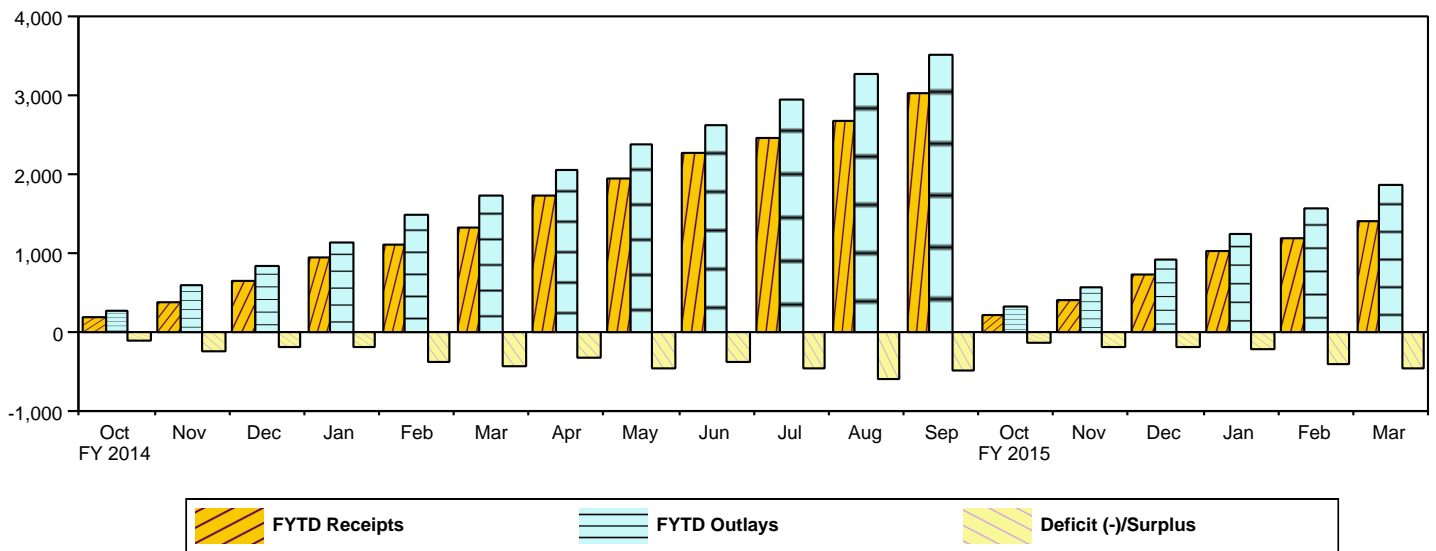
<sup>1</sup> These estimates are based on the FY 2016 Budget, released by the Office of Management and Budget on February 2, 2015

Note: Details may not add to totals due to rounding.

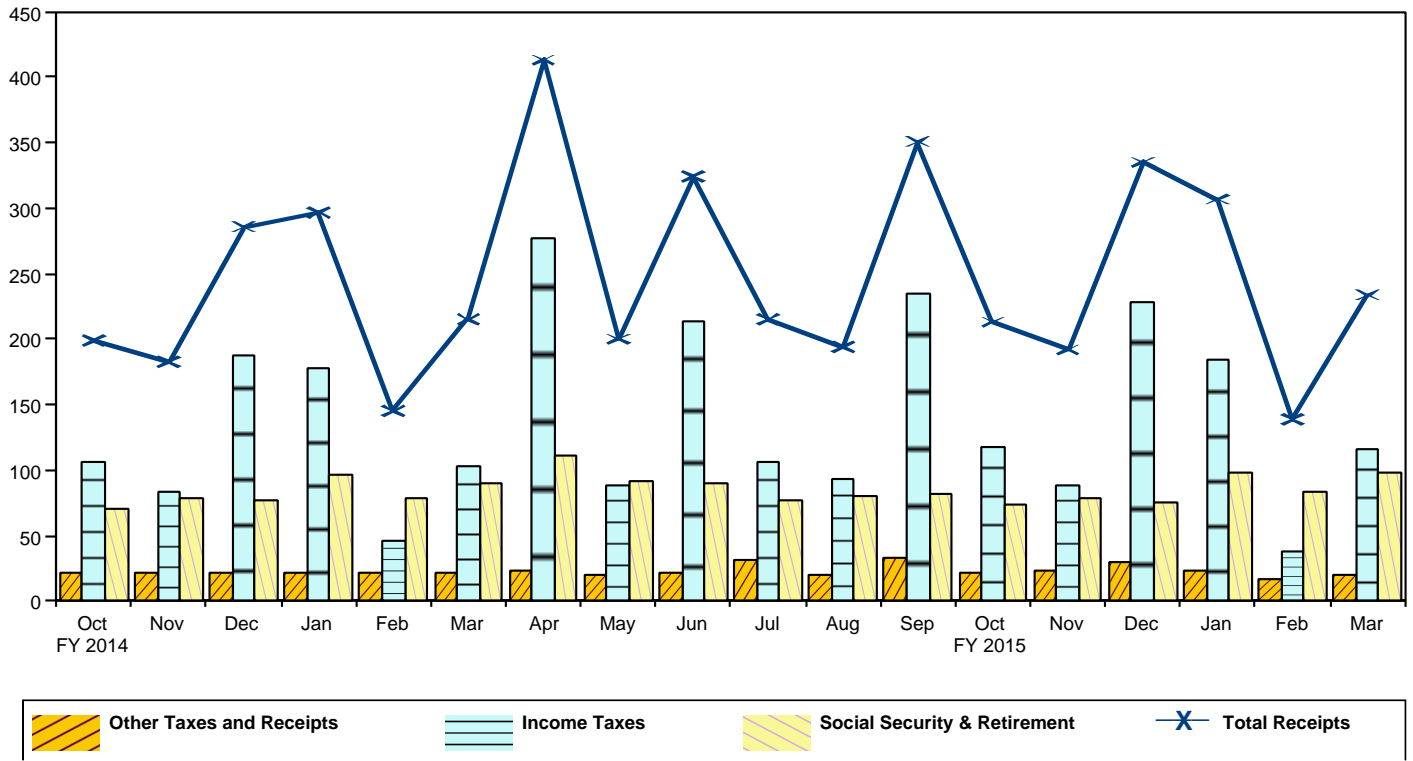
**Figure 1. Monthly Receipts, Outlays, and Budget Deficit/Surplus of the U.S. Government, Fiscal Years 2014 and 2015**  
[\$ billions]



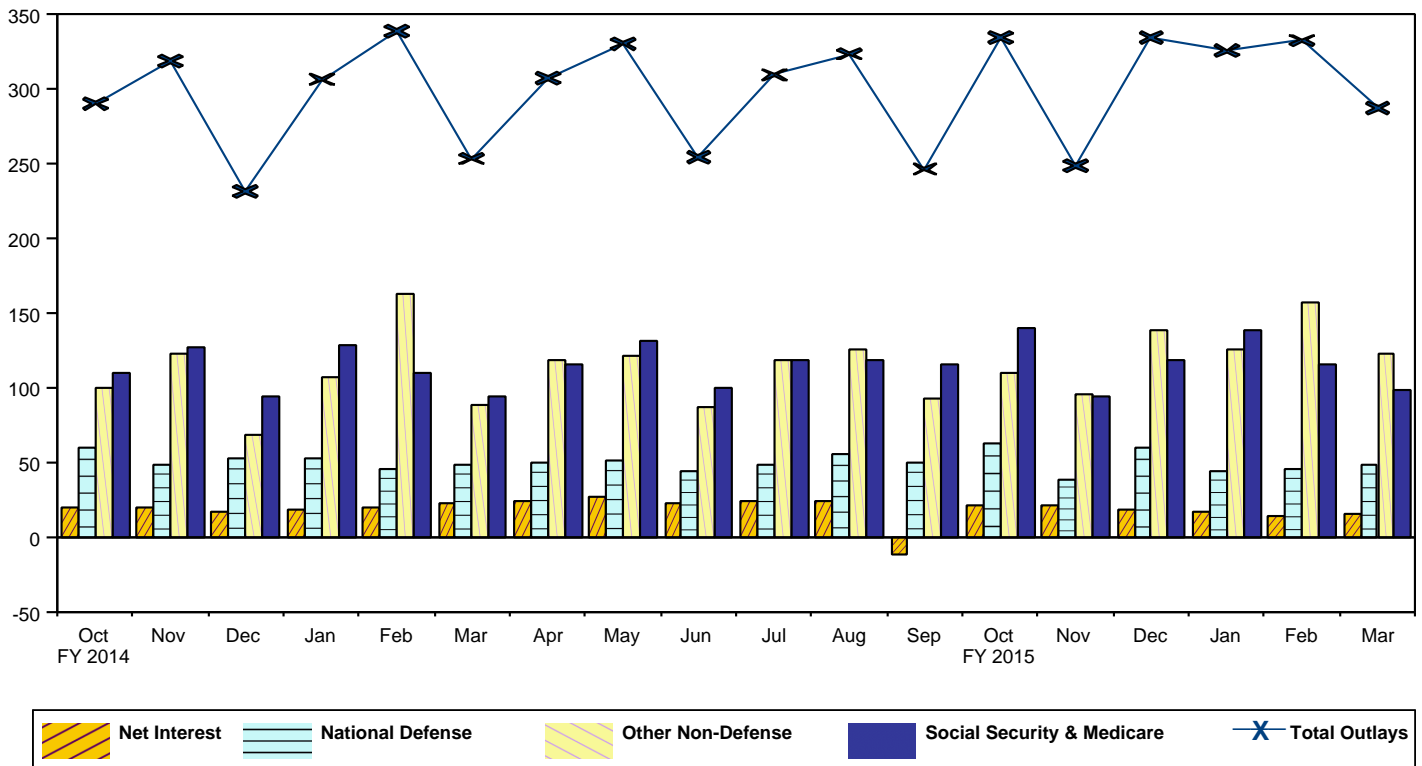
**Figure 2. Monthly Receipts, Outlays, and Budget Deficit/Surplus of the U.S. Government, Cumulative, Fiscal Years 2014 and 2015**  
[\$ billions]



**Figure 3. Monthly Receipts of the U.S. Government, by Source, Fiscal Years 2014 and 2015**  
[\$ billions]



**Figure 4. Monthly Outlays of the U.S. Government, by Function, Fiscal Years 2014 and 2015**  
[\$ billions]



**Table 3. Summary of Receipts and Outlays of the U.S. Government, March 2015 and Other Periods**

[\$ millions]				
Classification	This Month	Current Fiscal Year to Date	Comparable Prior Period Year to Date	Budget Estimates Full Fiscal Year <sup>1</sup>
<b>Budget Receipts</b>				
Individual Income Taxes	85,973	641,434	584,914	1,478,076
Corporation Income Taxes	30,481	132,114	117,555	341,688
Social Insurance and Retirement Receipts:				
Employment and General Retirement (Off-Budget)	75,405	371,880	355,908	765,570
Employment and General Retirement (On-Budget)	21,392	118,007	114,629	239,431
Unemployment Insurance	454	16,975	18,066	56,351
Other Retirement	328	1,804	1,732	3,660
Excise Taxes	6,559	39,412	38,361	95,898
Estate and Gift Taxes	1,642	8,911	8,748	19,738
Customs Duties	2,627	17,416	16,806	36,762
Miscellaneous Receipts	9,327	71,847	65,895	138,898
<b>Total Receipts</b>	<b>234,187</b>	<b>1,419,800</b>	<b>1,322,613</b>	<b>3,176,072</b>
<b>(On-Budget)</b>	<b>158,782</b>	<b>1,047,920</b>	<b>966,705</b>	<b>2,410,502</b>
<b>(Off-Budget)</b>	<b>75,405</b>	<b>371,880</b>	<b>355,908</b>	<b>765,570</b>
<b>Budget Outlays</b>				
Legislative Branch	421	2,181	2,065	4,899
Judicial Branch	610	3,534	3,420	7,567
Department of Agriculture	11,814	79,335	80,108	147,536
Department of Commerce	954	4,409	3,852	9,971
Department of Defense--Military Programs	46,532	284,652	294,210	567,702
Department of Education	6,925	35,459	25,661	103,288
Department of Energy	2,208	12,382	11,809	30,140
Department of Health and Human Services	68,367	502,283	449,205	1,012,950
Department of Homeland Security	4,270	21,973	21,506	45,685
Department of Housing and Urban Development	3,286	18,287	22,172	42,390
Department of the Interior	1,289	5,902	5,149	13,008
Department of Justice	3,020	12,604	14,394	36,087
Department of Labor	4,190	22,289	32,210	52,797
Department of State	2,339	12,727	12,542	30,521
Department of Transportation	5,717	33,444	34,569	80,208
Department of the Treasury:				
Interest on Treasury Debt Securities (Gross)	13,889	160,736	192,872	431,591
Other	18,697	85,218	25,309	74,784
Department of Veterans Affairs	7,755	78,505	74,142	160,797
Corps of Engineers	574	3,339	3,241	7,463
Other Defense Civil Programs	2,142	36,089	31,152	59,725
Environmental Protection Agency	609	3,277	4,184	8,325
Executive Office of the President	35	195	180	401
General Services Administration	133	-467	-314	-1,178
International Assistance Programs	2,457	15,331	10,089	24,006
National Aeronautics and Space Administration	1,543	9,101	8,470	18,097
National Science Foundation	538	2,971	3,130	7,082
Office of Personnel Management	7,462	45,685	43,691	94,672
Small Business Administration	85	-1,208	-283	-571
Social Security Administration	74,292	464,552	445,336	953,781
Independent Agencies	-408	9,633	2,402	19,707
Allowances	.....	.....	.....	1,875
Undistributed Offsetting Receipts:				
Interest	1,778	-56,134	-71,092	-150,911
Other	-6,425	-49,010	-49,502	-135,818
<b>Total Outlays</b>	<b>287,097</b>	<b>1,859,273</b>	<b>1,735,879</b>	<b>3,758,577</b>
<b>(On-Budget)</b>	<b>214,902</b>	<b>1,493,808</b>	<b>1,387,905</b>	<b>3,005,957</b>
<b>(Off-Budget)</b>	<b>72,195</b>	<b>365,465</b>	<b>347,974</b>	<b>752,620</b>
<b>Surplus (+) or Deficit (-)</b>	<b>-52,910</b>	<b>-439,473</b>	<b>-413,266</b>	<b>-582,505</b>
<b>(On-Budget)</b>	<b>-56,120</b>	<b>-445,888</b>	<b>-421,200</b>	<b>-595,455</b>
<b>(Off-Budget)</b>	<b>+3,210</b>	<b>+6,415</b>	<b>+7,934</b>	<b>+12,950</b>

<sup>1</sup> These estimates are based on the FY 2016 Budget, released by the Office of Management and Budget on February 2, 2015

Note: Details may not add to totals due to rounding.  
... No Transactions

**Table 4. Receipts of the U.S. Government, March 2015 and Other Periods**

Classification	This Month			Current Fiscal Year to Date			Prior Fiscal Year to Date		
	Gross Receipts	Refunds (Deduct)	Receipts	Gross Receipts	Refunds (Deduct)	Receipts	Gross Receipts	Refunds (Deduct)	Receipts
<b>Individual Income Taxes</b>	.....			.....			.....		
Withheld <sup>1</sup>	121,794			648,781			609,405		
Presidential Election Campaign Fund	6			13			11		
Other	16,077			139,509			119,983		
<b>Total -- Individual Income Taxes</b>	<b>137,876</b>	<b>51,903</b>	<b>85,973</b>	<b>788,303</b>	<b>146,869</b>	<b>641,434</b>	<b>729,398</b>	<b>144,484</b>	<b>584,914</b>
<b>Corporation Income Taxes</b>	<b>39,698</b>	<b>9,218</b>	<b>30,481</b>	<b>163,668</b>	<b>31,554</b>	<b>132,114</b>	<b>137,239</b>	<b>19,685</b>	<b>117,555</b>
<b>Social Insurance and Retirement Receipts:</b>									
Employment and General Retirement:									
Federal Old-Age and Survivors Insurance Trust Fund:									
Federal Insurance Contributions Act Taxes <sup>1</sup>	55,521	.....	55,521	305,558	.....	305,558	292,273	.....	292,273
Self-Employment Contributions Act Taxes <sup>1</sup>	1,085	.....	1,085	8,864	.....	8,864	8,495	.....	8,495
Adjustments Attributable to Prior Years <sup>1</sup>	7,854	.....	7,854	3,477	.....	3,477	3,480	.....	3,480
<b>Total -- Federal Old-Age and Survivors Insurance Trust Fund</b>	<b>64,460</b>	<b>.....</b>	<b>64,460</b>	<b>317,899</b>	<b>.....</b>	<b>317,899</b>	<b>304,248</b>	<b>.....</b>	<b>304,248</b>
Federal Disability Insurance Trust Fund:									
Federal Insurance Contributions Act Taxes <sup>1</sup>	9,427	.....	9,427	51,887	.....	51,887	49,631	.....	49,631
Self-Employment Contributions Act Taxes <sup>1</sup>	185	.....	185	1,506	.....	1,506	1,444	.....	1,444
Adjustments Attributable to Prior Years <sup>1</sup>	1,334	.....	1,334	588	.....	588	586	.....	586
<b>Total -- Federal Disability Insurance Trust Fund</b>	<b>10,946</b>	<b>.....</b>	<b>10,946</b>	<b>53,981</b>	<b>.....</b>	<b>53,981</b>	<b>51,661</b>	<b>.....</b>	<b>51,661</b>
Federal Hospital Insurance Trust Fund:									
Federal Insurance Contributions Act Taxes <sup>1</sup>	17,675	.....	17,675	109,724	.....	109,724	105,598	.....	105,598
Self-Employment Contributions Act Taxes <sup>1</sup>	685	.....	685	4,155	.....	4,155	4,085	.....	4,085
Adjustments Attributable to Prior Years <sup>1</sup>	2,387	.....	2,387	874	.....	874	1,974	.....	1,974
<b>Total -- Federal Hospital Insurance Trust Fund</b>	<b>20,747</b>	<b>.....</b>	<b>20,747</b>	<b>114,753</b>	<b>.....</b>	<b>114,753</b>	<b>111,657</b>	<b>.....</b>	<b>111,657</b>
Railroad Retirement:									
Rail Pension and Supplemental Annuity	331	(**)	331	1,639	(**)	1,639	1,488	25	1,463
Social Security Equivalent Account	315	(**)	315	1,615	(**)	1,615	1,508	(**)	1,508
<b>Total -- Employment and General Retirement</b>	<b>96,797</b>	<b>(**)</b>	<b>96,797</b>	<b>489,888</b>	<b>1</b>	<b>489,887</b>	<b>470,562</b>	<b>25</b>	<b>470,537</b>
Unemployment Insurance:									
Deposits by States	400	.....	400	12,213	.....	12,213	13,642	.....	13,642
Federal Unemployment Taxes	81	27	54	4,787	42	4,745	4,436	32	4,405
Railroad Unemployment Taxes	(**)	.....	(**)	17	.....	17	19	.....	19
<b>Total -- Unemployment Insurance</b>	<b>481</b>	<b>27</b>	<b>454</b>	<b>17,017</b>	<b>42</b>	<b>16,975</b>	<b>18,097</b>	<b>32</b>	<b>18,066</b>
Other Retirement:									
Federal Employees' Retirement--Employee Share	326	.....	326	1,792	.....	1,792	1,719	.....	1,719
Non-Federal Employees Retirement	2	.....	2	12	.....	12	13	.....	13
<b>Total -- Other Retirement</b>	<b>328</b>	<b>.....</b>	<b>328</b>	<b>1,804</b>	<b>.....</b>	<b>1,804</b>	<b>1,732</b>	<b>.....</b>	<b>1,732</b>
<b>Total -- Social Insurance and Retirement Receipts</b>	<b>97,606</b>	<b>27</b>	<b>97,579</b>	<b>508,709</b>	<b>43</b>	<b>508,666</b>	<b>490,391</b>	<b>57</b>	<b>490,334</b>
<b>Excise Taxes:</b>									
Miscellaneous Excise Taxes	2,378	97	2,281	15,646	896	14,750	16,127	1,035	15,092
Airport and Airway Trust Fund	1,131	.....	1,131	6,289	9	6,280	5,825	6	5,819
Highway Trust Fund	3,099	.....	3,099	18,119	.....	18,119	17,181	.....	17,181
Black Lung Disability Trust Fund	48	.....	48	264	.....	264	269	.....	269
<b>Total -- Excise Taxes</b>	<b>6,656</b>	<b>97</b>	<b>6,559</b>	<b>40,318</b>	<b>905</b>	<b>39,412</b>	<b>39,402</b>	<b>1,041</b>	<b>38,361</b>
<b>Estate and Gift Taxes</b>	<b>1,717</b>	<b>74</b>	<b>1,642</b>	<b>9,327</b>	<b>417</b>	<b>8,911</b>	<b>9,161</b>	<b>413</b>	<b>8,748</b>
<b>Customs Duties</b>	<b>2,822</b>	<b>196</b>	<b>2,627</b>	<b>18,249</b>	<b>833</b>	<b>17,416</b>	<b>17,426</b>	<b>620</b>	<b>16,806</b>
<b>Miscellaneous Receipts:</b>									
Deposit of Earnings, Federal Reserve System	6,676	.....	6,676	43,459	.....	43,459	48,137	.....	48,137
Universal Service Fund	801	.....	801	4,703	.....	4,703	4,879	.....	4,879
All Other	1,851	1	1,850	23,692	7	23,685	12,897	19	12,878
<b>Total -- Miscellaneous Receipts</b>	<b>9,327</b>	<b>1</b>	<b>9,327</b>	<b>71,854</b>	<b>7</b>	<b>71,847</b>	<b>65,913</b>	<b>19</b>	<b>65,895</b>
<b>Total -- Receipts</b>	<b>295,703</b>	<b>61,516</b>	<b>234,187</b>	<b>1,600,428</b>	<b>180,628</b>	<b>1,419,800</b>	<b>1,488,931</b>	<b>166,318</b>	<b>1,322,613</b>
<b>Total -- On-Budget</b>	<b>220,298</b>	<b>61,516</b>	<b>158,782</b>	<b>1,228,548</b>	<b>180,628</b>	<b>1,047,920</b>	<b>1,133,023</b>	<b>166,318</b>	<b>966,705</b>
<b>Total -- Off-Budget</b>	<b>75,405</b>	<b>.....</b>	<b>75,405</b>	<b>371,880</b>	<b>.....</b>	<b>371,880</b>	<b>355,908</b>	<b>.....</b>	<b>355,908</b>

1 In accordance with the Social Security Act as amended: Individual Income Taxes. Other have been decreased and Federal Insurance Contribution Act Taxes have increased by \$11, 175 million to correct estimates for the quarter ended March 2014. Individual Income Taxes, Other have decreased and Self-Employment Contribution Act Taxes have increased by \$399 million to correct estimates for

calendar year 2012 and prior.  
 Note: Details may not add to totals due to rounding.  
 ... No Transactions  
 (\*\*) Less than absolute value of \$500,000

**Table 5. Outlays of the U.S. Government, March 2015 and Other Periods**

[\$ millions]

Classification	This Month			Current Fiscal Year to Date			Prior Fiscal Year to Date		
	Gross Outlays	Applicable Receipts	Outlays	Gross Outlays	Applicable Receipts	Outlays	Gross Outlays	Applicable Receipts	Outlays
<b>Legislative Branch:</b>									
Senate	73	(**)	73	425	1	424	402	1	401
House of Representatives	101	(**)	101	641	1	640	627	1	626
Joint Items	2	.....	2	8	.....	8	8	.....	8
Capitol Police	37	.....	37	171	.....	171	156	.....	156
Congressional Budget Office	5	.....	5	23	.....	23	21	.....	21
Architect of the Capitol	72	(**)	72	259	2	257	210	2	209
Library of Congress	60	1	59	296	5	291	289	4	285
Government Printing Office	7	.....	7	77	.....	77	73	.....	73
Government Accountability Office	56	.....	56	255	.....	255	244	.....	244
United States Tax Court	4	.....	4	26	.....	26	24	.....	24
Other Legislative Branch Agencies	5	.....	5	22	.....	22	33	.....	33
Proprietary Receipts from the Public	.....	(**)	(**)	.....	7	-7	.....	8	-8
Intrabudgetary Transactions	1	.....	1	-6	.....	-6	-6	.....	-6
Offsetting Governmental Receipts	.....	.....	.....	.....	(**)	(**)	.....	(**)	(**)
<b>Total--Legislative Branch</b>	<b>422</b>	<b>1</b>	<b>421</b>	<b>2,196</b>	<b>15</b>	<b>2,181</b>	<b>2,081</b>	<b>16</b>	<b>2,065</b>
<b>Judicial Branch:</b>									
Supreme Court of the United States	7	.....	7	41	.....	41	53	.....	53
Courts of Appeals, District Courts, and Other Judicial Services	574	.....	574	3,780	.....	3,780	3,622	.....	3,622
Other	18	.....	18	294	.....	294	287	.....	287
Proprietary Receipts from the Public	.....	4	-4	.....	74	-74	.....	76	-76
Intrabudgetary Transactions	15	.....	15	-508	.....	-508	-465	.....	-465
<b>Total--Judicial Branch</b>	<b>614</b>	<b>4</b>	<b>610</b>	<b>3,607</b>	<b>74</b>	<b>3,534</b>	<b>3,496</b>	<b>76</b>	<b>3,420</b>
<b>Department of Agriculture:</b>									
Agricultural Research Service	124	.....	124	554	.....	554	499	.....	499
National Institute of Food and Agriculture:									
Research and Education Activities	56	.....	56	322	.....	322	322	.....	322
Extension Activities	33	.....	33	217	.....	217	228	.....	228
Other	10	.....	10	44	.....	44	50	.....	50
Animal and Plant Health Inspection Service	144	.....	144	562	.....	562	491	.....	491
Food Safety and Inspection Service	134	.....	134	506	.....	506	478	.....	478
Agricultural Marketing Service	113	.....	113	647	.....	647	407	.....	407
Risk Management Agency:									
Administrative and Operating Expenses	10	.....	10	35	.....	35	31	.....	31
Federal Crop Insurance Corporation Fund	710	8	702	8,284	19	8,265	9,118	94	9,024
Farm Service Agency:									
Salaries and Expenses	94	.....	94	670	.....	670	362	.....	362
USDA Supplemental Assistance	(**)	.....	(**)	(**)	.....	(**)	(**)	.....	(**)
Agricultural Disaster Relief Fund	(**)	.....	(**)	1	.....	1	31	.....	31
Commodity Credit Corporation	344	398	-54	10,821	2,817	8,004	13,218	3,618	9,601
Tobacco Trust Fund	1	.....	1	41	.....	41	609	.....	609
Agricultural Credit Insurance Fund	90	7	83	118	61	56	347	78	269
Other	12	.....	12	43	.....	43	13	.....	13
<b>Total--Farm Service Agency</b>	<b>541</b>	<b>405</b>	<b>136</b>	<b>11,693</b>	<b>2,878</b>	<b>8,815</b>	<b>14,580</b>	<b>3,696</b>	<b>10,885</b>
Natural Resources Conservation Service:									
Conservation Operations	88	.....	88	367	.....	367	374	.....	374
Farm Security and Rural Investment Programs	194	.....	194	1,820	.....	1,820	1,811	.....	1,811
Other	12	.....	12	63	.....	63	69	.....	69
Rural Development	80	.....	80	-119	.....	-119	-137	.....	-137
Rural Housing Service:									
Rural Housing Insurance Fund	7	45	-38	466	268	198	453	270	183
Rental Assistance Program	100	.....	100	592	.....	592	581	.....	581
Other	13	.....	13	64	.....	64	61	.....	61
Rural Utilities Service:									
Rural Electrification and Telecommunications Fund	69	-193	262	164	399	-235	79	1,009	-930
Other	64	12	51	466	74	392	516	95	421
Foreign Agricultural Service	96	.....	96	657	.....	657	599	.....	599
Food and Nutrition Service:									
Supplemental Nutrition Assistance Program	6,577	.....	6,577	38,274	.....	38,274	38,478	.....	38,478
Child Nutrition Programs	2,085	.....	2,085	11,834	.....	11,834	10,639	.....	10,639
Special Supplemental Nutrition Program for Women, Infants, and Children (WIC)	547	.....	547	3,120	.....	3,120	3,095	.....	3,095
Other	47	.....	47	220	.....	220	156	.....	156
<b>Total--Food and Nutrition Service</b>	<b>9,256</b>	<b>.....</b>	<b>9,256</b>	<b>53,448</b>	<b>.....</b>	<b>53,448</b>	<b>52,367</b>	<b>.....</b>	<b>52,367</b>

**Table 5. Outlays of the U.S. Government, March 2015 and Other Periods - Continued**

Classification	This Month			Current Fiscal Year to Date			Prior Fiscal Year to Date		
	Gross Outlays	Applicable Receipts	Outlays	Gross Outlays	Applicable Receipts	Outlays	Gross Outlays	Applicable Receipts	Outlays
<b>Department of Agriculture: - Continued</b>									
Forest Service:									
National Forest System	164	.....	164	770	.....	770	725	.....	725
Capital Improvement and Maintenance	30	.....	30	169	.....	169	166	.....	166
Wildland Fire Management	158	.....	158	889	.....	889	1,087	.....	1,087
Forest Service Permanent Appropriations	42	.....	42	153	.....	153	69	.....	69
Other	69	.....	69	378	.....	378	375	.....	375
<b>Total--Forest Service</b>	<b>462</b>	<b>.....</b>	<b>462</b>	<b>2,359</b>	<b>.....</b>	<b>2,359</b>	<b>2,422</b>	<b>.....</b>	<b>2,422</b>
Other	1	6	-5	309	34	275	586	30	556
Proprietary Receipts from the Public	.....	130	-130	.....	556	-556	.....	661	-661
Intrabudgetary Transactions	-91	.....	-91	45	.....	45	-23	.....	-23
<b>Total--Department of Agriculture</b>	<b>12,227</b>	<b>413</b>	<b>11,814</b>	<b>83,563</b>	<b>4,229</b>	<b>79,335</b>	<b>85,962</b>	<b>5,854</b>	<b>80,108</b>
<b>Department of Commerce:</b>									
Economic Development Administration	34	(**)	34	144	5	139	174	1	173
Bureau of the Census	144	.....	144	573	.....	573	531	.....	531
International Trade Administration	48	.....	48	204	.....	204	203	.....	203
National Oceanic and Atmospheric Administration	557	(**)	557	2,771	43	2,729	2,568	105	2,463
National Institute of Standards and Technology	89	.....	89	454	.....	454	415	.....	415
National Telecommunications and Information Administration	-2	.....	-2	115	.....	115	248	.....	248
Other	96	13	82	256	75	181	-136	47	-183
Proprietary Receipts from the Public	.....	3	-3	.....	-2	2	.....	-4	4
Intrabudgetary Transactions	6	.....	6	12	.....	12	(**)	.....	(**)
Offsetting Governmental Receipts	.....	(**)	(**)	.....	1	-1	.....	1	-1
<b>Total--Department of Commerce</b>	<b>971</b>	<b>17</b>	<b>954</b>	<b>4,530</b>	<b>122</b>	<b>4,409</b>	<b>4,003</b>	<b>150</b>	<b>3,852</b>
<b>Department of Defense--Military Programs:</b>									
Military Personnel:									
Department of the Army	2,500	.....	2,500	30,554	.....	30,554	31,903	.....	31,903
Department of the Navy	1,917	.....	1,917	23,646	.....	23,646	24,093	.....	24,093
Department of the Air Force	1,771	.....	1,771	17,824	.....	17,824	18,256	.....	18,256
Defense Agencies	.....	.....	.....	6,197	.....	6,197	6,337	.....	6,337
<b>Total--Military Personnel</b>	<b>6,188</b>	<b>.....</b>	<b>6,188</b>	<b>78,222</b>	<b>.....</b>	<b>78,222</b>	<b>80,590</b>	<b>.....</b>	<b>80,590</b>
Operation and Maintenance:									
Department of the Army	6,023	.....	6,023	32,828	.....	32,828	35,140	.....	35,140
Department of the Navy	4,702	.....	4,702	26,634	.....	26,634	25,876	.....	25,876
Department of the Air Force	4,816	.....	4,816	26,610	.....	26,610	24,521	.....	24,521
Defense Agencies	5,995	.....	5,995	<sup>1</sup> 33,638	.....	33,638	32,421	.....	32,421
<b>Total--Operation and Maintenance</b>	<b>21,537</b>	<b>.....</b>	<b>21,537</b>	<b>119,710</b>	<b>.....</b>	<b>119,710</b>	<b>117,958</b>	<b>.....</b>	<b>117,958</b>
International Reconstruction and Other Assistance:									
Department of the Army	.....	.....	.....	(**)	.....	(**)	1	.....	1
Procurement:									
Department of the Army	1,590	.....	1,590	9,608	.....	9,608	11,802	.....	11,802
Department of the Navy	3,692	.....	3,692	19,894	.....	19,894	21,607	.....	21,607
Department of the Air Force	5,165	.....	5,165	19,095	.....	19,095	19,573	.....	19,573
Defense Agencies	490	.....	490	<sup>2</sup> 3,261	.....	3,261	3,390	.....	3,390
<b>Total--Procurement</b>	<b>10,937</b>	<b>.....</b>	<b>10,937</b>	<b>51,858</b>	<b>.....</b>	<b>51,858</b>	<b>56,372</b>	<b>.....</b>	<b>56,372</b>
Research, Development, Test, and Evaluation:									
Department of the Army	634	.....	634	3,520	.....	3,520	3,825	.....	3,825
Department of the Navy	1,585	.....	1,585	7,817	.....	7,817	7,409	.....	7,409
Department of the Air Force	3,529	.....	3,529	11,587	.....	11,587	11,152	.....	11,152
Defense Agencies	1,682	.....	1,682	<sup>3</sup> 8,501	.....	8,501	8,818	.....	8,818
<b>Total--Research, Development, Test, and Evaluation</b>	<b>7,431</b>	<b>.....</b>	<b>7,431</b>	<b>31,425</b>	<b>.....</b>	<b>31,425</b>	<b>31,204</b>	<b>.....</b>	<b>31,204</b>
Military Construction:									
Department of the Army	252	.....	252	1,239	.....	1,239	1,356	.....	1,356
Department of the Navy	115	.....	115	886	.....	886	1,025	.....	1,025
Department of the Air Force	65	.....	65	403	.....	403	612	.....	612
Defense Agencies	265	.....	265	1,616	.....	1,616	1,802	.....	1,802
<b>Total--Military Construction</b>	<b>697</b>	<b>.....</b>	<b>697</b>	<b>4,144</b>	<b>.....</b>	<b>4,144</b>	<b>4,794</b>	<b>.....</b>	<b>4,794</b>
Family Housing:									
Department of the Army	24	.....	24	209	.....	209	-89	.....	-89
Department of the Navy	28	.....	28	160	.....	160	172	.....	172
Department of the Air Force	32	.....	32	150	.....	150	184	.....	184
Defense Agencies	10	2	8	42	12	31	49	6	43
Revolving and Management Funds:									



**Table 5. Outlays of the U.S. Government, March 2015 and Other Periods - Continued**

Classification	This Month			Current Fiscal Year to Date			Prior Fiscal Year to Date		
	Gross Outlays	Applicable Receipts	Outlays	Gross Outlays	Applicable Receipts	Outlays	Gross Outlays	Applicable Receipts	Outlays
<b>Department of Defense--Military Programs: - Continued</b>									
Department of the Navy	20	.....	20	277	.....	277	630	.....	630
Defense Agencies:									
Working Capital Fund	-410	.....	-410	-506	.....	-506	2,445	.....	2,445
Other	-11	.....	-11	12	.....	12	213	.....	213
Allowances	(**)	.....	(**)	1	.....	1	39	.....	39
Trust Funds:									
Department of the Army	(**)	.....	(**)	2	.....	2	4	.....	4
Department of the Navy	2	.....	2	12	.....	12	12	.....	12
Department of the Air Force	3	.....	3	24	(**)	24	1	(**)	1
Defense Agencies	17	.....	17	105	.....	105	131	.....	131
Proprietary Receipts from the Public:									
Department of the Army	.....	-444	444	.....	166	-166	.....	249	-249
Department of the Navy	.....	23	-23	.....	62	-62	.....	96	-96
Department of the Air Force	.....	39	-39	.....	5	-5	.....	-8	8
Defense Agencies	.....	210	-210	.....	580	-580	.....	420	-420
Intrabudgetary Transactions:									
Department of the Army	-5	.....	-5	-116	.....	-116	-8	.....	-8
Department of the Navy	(**)	.....	(**)	8	.....	8	-35	.....	-35
Department of the Air Force	-27	.....	-27	-16	.....	-16	131	.....	131
Defense Agencies	-112	.....	-112	-245	.....	-245	175	.....	175
Offsetting Governmental Receipts:									
Department of the Army	.....	(**)	(**)	.....	(**)	(**)	.....	1	-1
<b>Total--Department of Defense--Military Programs</b>	<b>46,361</b>	<b>-171</b>	<b>46,532</b>	<b>285,477</b>	<b>825</b>	<b>284,652</b>	<b>294,974</b>	<b>764</b>	<b>294,210</b>
<b>Department of Education:</b>									
Office of Elementary and Secondary Education:									
Accelerating Achievement and Ensuring Equity	1,444	.....	1,444	7,440	.....	7,440	7,667	.....	7,667
Impact Aid	115	.....	115	1,152	.....	1,152	864	.....	864
Education Improvement Programs	411	.....	411	2,127	.....	2,127	2,184	.....	2,184
State Fiscal Stabilization Fund, Recovery Act	57	.....	57	450	.....	450	720	.....	720
Other	33	.....	33	175	.....	175	179	.....	179
<b>Total--Office of Elementary and Secondary Education</b>	<b>2,059</b>	<b>.....</b>	<b>2,059</b>	<b>11,344</b>	<b>.....</b>	<b>11,344</b>	<b>11,612</b>	<b>.....</b>	<b>11,612</b>
Office of Innovation and Improvement	110	.....	110	671	.....	671	595	.....	595
Office of English Language Acquisition	87	.....	87	370	.....	370	385	.....	385
Office of Special Education and Rehabilitative Services:									
Special Education	1,410	.....	1,410	6,108	.....	6,108	5,932	.....	5,932
Rehabilitation Services and Disability Research	277	.....	277	1,771	.....	1,771	1,674	.....	1,674
Special Institutions for Persons with Disabilities	15	.....	15	107	.....	107	106	.....	106
Office of Vocational and Adult Education	143	.....	143	792	.....	792	790	.....	790
Office of Postsecondary Education:									
Higher Education	155	.....	155	991	.....	991	1,056	.....	1,056
Other	-1	(**)	-1	109	5	104	110	6	103
<b>Total--Office of Postsecondary Education</b>	<b>154</b>	<b>(**)</b>	<b>153</b>	<b>1,100</b>	<b>5</b>	<b>1,096</b>	<b>1,166</b>	<b>6</b>	<b>1,160</b>
Office of Federal Student Aid:									
Student Financial Assistance	2,417	.....	2,417	18,275	.....	18,275	18,911	.....	18,911
Student Aid Administration	110	.....	110	637	.....	637	628	.....	628
Federal Student Loan Reserve Fund	16	.....	16	16	.....	16	.....	.....	.....
Federal Family Education Loans	-43	.....	-43	-178	.....	-178	-124	.....	-124
Other	1	1	(**)	9	4	4	6	.....	6
<b>Total--Office of Federal Student Aid</b>	<b>2,500</b>	<b>1</b>	<b>2,499</b>	<b>18,759</b>	<b>4</b>	<b>18,755</b>	<b>19,422</b>	<b>.....</b>	<b>19,422</b>
Institute of Education Sciences	77	.....	77	317	.....	317	304	.....	304
Departmental Management	57	.....	57	282	.....	282	274	.....	274
Other	(**)	.....	(**)	(**)	.....	(**)	1	.....	1
Proprietary Receipts from the Public	.....	648	-648	.....	6,074	-6,074	.....	15,832	-15,832
Intrabudgetary Transactions	685	.....	685	-80	.....	-80	-762	.....	-762
<b>Total--Department of Education</b>	<b>7,575</b>	<b>649</b>	<b>6,925</b>	<b>41,542</b>	<b>6,083</b>	<b>35,459</b>	<b>41,499</b>	<b>15,838</b>	<b>25,661</b>
<b>Department of Energy:</b>									
National Nuclear Security Administration:									
Naval Reactors	75	.....	75	463	.....	463	473	.....	473
Weapons Activities	750	.....	750	3,693	.....	3,693	3,693	.....	3,693
Defense Nuclear Nonproliferation	240	.....	240	955	.....	955	983	.....	983
Other	33	.....	33	176	.....	176	176	.....	176
Environmental and Other Defense Activities:									

**Table 5. Outlays of the U.S. Government, March 2015 and Other Periods - Continued**

Classification	This Month			Current Fiscal Year to Date			Prior Fiscal Year to Date		
	Gross Outlays	Applicable Receipts	Outlays	Gross Outlays	Applicable Receipts	Outlays	Gross Outlays	Applicable Receipts	Outlays
<b>Department of Energy: - Continued</b>									
Defense Environmental Cleanup	409	.....	409	2,454	.....	2,454	2,322	.....	2,322
Other Defense Activities	85	.....	85	424	.....	424	344	.....	344
Defense Nuclear Waste Disposal	(**)	.....	(**)	2	.....	2	2	.....	2
Energy Programs:									
Science	388	.....	388	2,393	.....	2,393	2,503	.....	2,503
Energy Supply	122	.....	122	739	.....	739	713	.....	713
Energy Efficiency and Renewable Energy	164	.....	164	909	.....	909	1,050	.....	1,050
Fossil Energy Research and Development	83	.....	83	446	.....	446	413	.....	413
Uranium Enrichment Decontamination and Decommissioning Fund	58	.....	58	302	.....	302	196	.....	196
Advanced Technology Vehicles Manufacturing Loan Program	15	.....	15	17	.....	17	16	.....	16
Title 17 Innovative Technology Loan Guarantee Program	42	.....	42	69	.....	69	153	.....	153
Other	84	3	81	483	30	454	459	34	426
<b>Total--Energy Programs</b>	<b>957</b>	<b>3</b>	<b>954</b>	<b>5,357</b>	<b>30</b>	<b>5,328</b>	<b>5,503</b>	<b>34</b>	<b>5,470</b>
Power Marketing Administration	328	340	-12	1,993	1,889	104	1,872	1,883	-11
Departmental Administration	-22	.....	-22	77	.....	77	59	.....	59
Proprietary Receipts from the Public	.....	198	-198	.....	585	-585	.....	958	-958
Intrabudgetary Transactions	-107	.....	-107	-707	.....	-707	-743	.....	-743
<b>Total--Department of Energy</b>	<b>2,748</b>	<b>540</b>	<b>2,208</b>	<b>14,886</b>	<b>2,503</b>	<b>12,382</b>	<b>14,683</b>	<b>2,874</b>	<b>11,809</b>
<b>Department of Health and Human Services:</b>									
Food and Drug Administration	263	1	263	1,319	4	1,315	1,004	4	1,000
Health Resources and Services Administration	880	.....	880	4,553	.....	4,553	4,413	4	4,409
Indian Health Service	218	.....	218	3,170	.....	3,170	3,048	.....	3,048
Centers for Disease Control and Prevention	512	.....	512	3,285	.....	3,285	2,990	.....	2,990
National Institutes of Health	2,395	.....	2,395	14,182	.....	14,182	14,484	.....	14,484
Substance Abuse and Mental Health Services Administration	298	.....	298	1,428	.....	1,428	1,575	.....	1,575
Agency for Healthcare Research and Quality	16	.....	16	68	.....	68	47	.....	47
Centers for Medicare and Medicaid Services:									
Grants to States for Medicaid	31,756	.....	31,756	172,017	.....	172,017	140,337	.....	140,337
Payments to Health Care Trust Funds	17,232	.....	17,232	132,247	.....	132,247	127,886	.....	127,886
Children's Health Insurance Fund	1,155	.....	1,155	4,898	.....	4,898	5,953	.....	5,953
State Grants and Demonstrations	50	.....	50	269	.....	269	247	.....	247
Federal Hospital Insurance Trust Fund:									
Benefit Payments	17,012	.....	17,012	134,115	.....	134,115	126,191	.....	126,191
Administrative Expenses	418	.....	418	4,689	.....	4,689	5,054	.....	5,054
<b>Total--Federal Hospital Insurance Trust Fund</b>	<b>17,429</b>	<b>.....</b>	<b>17,429</b>	<b>138,804</b>	<b>.....</b>	<b>138,804</b>	<b>131,245</b>	<b>.....</b>	<b>131,245</b>
Health Care Fraud and Abuse Control	134	.....	134	768	.....	768	598	.....	598
Federal Supplementary Medical Insurance Trust Fund:									
Benefit Payments	14,748	.....	14,748	130,326	.....	130,326	120,571	.....	120,571
Administrative Expenses	437	.....	437	2,619	.....	2,619	2,310	.....	2,310
Medicare Prescription Drugs:									
Benefit Payments	139	.....	139	38,358	.....	38,358	32,096	.....	32,096
Administrative Expenses	36	.....	36	251	.....	251	211	.....	211
<b>Total--Federal Supplementary Medical Insurance Trust Fund</b>	<b>15,361</b>	<b>.....</b>	<b>15,361</b>	<b>171,554</b>	<b>.....</b>	<b>171,554</b>	<b>155,188</b>	<b>.....</b>	<b>155,188</b>
Other	320	.....	320	1,532	.....	1,532	1,787	.....	1,787
<b>Total--Centers for Medicare and Medicaid Services</b>	<b>83,437</b>	<b>.....</b>	<b>83,437</b>	<b>622,090</b>	<b>.....</b>	<b>622,090</b>	<b>563,240</b>	<b>.....</b>	<b>563,240</b>
Administration for Children and Families:									
Temporary Assistance for Needy Families	1,374	.....	1,374	7,558	.....	7,558	7,951	.....	7,951
Contingency Fund	218	.....	218	330	.....	330	300	.....	300
Payments to States for Child Support Enforcement and Family Support Programs									
Family Support Programs	269	.....	269	1,592	.....	1,592	1,599	.....	1,599
Low Income Home Energy Assistance	350	.....	350	2,274	.....	2,274	2,387	.....	2,387
Refugee and Entrant Assistance	118	.....	118	581	.....	581	493	.....	493
Child Care Entitlement to States	209	.....	209	1,259	.....	1,259	1,261	.....	1,261
Payments to States for the Child Care and Development Block Grant									
Block Grant	226	.....	226	1,214	.....	1,214	1,084	.....	1,084
Social Services Block Grant	186	.....	186	934	.....	934	815	.....	815
Children and Families Services Programs	853	.....	853	5,067	.....	5,067	4,709	.....	4,709
Payments to States for Foster Care and Adoption Assistance									
Assistance	796	.....	796	3,618	.....	3,618	3,330	.....	3,330
Other	42	.....	42	251	.....	251	269	.....	269
<b>Total--Administration for Children and Families</b>	<b>4,641</b>	<b>.....</b>	<b>4,641</b>	<b>24,678</b>	<b>.....</b>	<b>24,678</b>	<b>24,197</b>	<b>.....</b>	<b>24,197</b>

**Table 5. Outlays of the U.S. Government, March 2015 and Other Periods - Continued**

Classification	This Month			Current Fiscal Year to Date			Prior Fiscal Year to Date		
	Gross Outlays	Applicable Receipts	Outlays	Gross Outlays	Applicable Receipts	Outlays	Gross Outlays	Applicable Receipts	Outlays
<b>Department of Health and Human Services: - Continued</b>									
Administration for Community Living	149	.....	149	821	.....	821	686	.....	686
Departmental Management	222	.....	222	1,425	.....	1,425	1,884	.....	1,884
Other	61	.....	61	341	.....	341	383	.....	383
Proprietary Receipts from the Public	.....	7,439	-7,439	.....	42,847	-42,847	.....	41,941	-41,941
Intrabudgetary Transactions:									
Payments for Health Insurance for the Aged:									
Federal Supplementary Medical Insurance Trust Fund	-16,913	.....	-16,913	-128,846	.....	-128,846	-123,506	.....	-123,506
Payments for Tax and Other Credits:									
Federal Hospital Insurance Trust Fund	-336	.....	-336	-3,421	.....	-3,421	-4,374	.....	-4,374
Other	-37	.....	-37	42	.....	42	1,083	.....	1,083
<b>Total--Department of Health and Human Services</b>	<b>75,806</b>	<b>7,439</b>	<b>68,367</b>	<b>545,134</b>	<b>42,851</b>	<b>502,283</b>	<b>491,154</b>	<b>41,949</b>	<b>449,205</b>
<b>Department of Homeland Security:</b>									
Departmental Management and Operations	93	.....	93	499	.....	499	508	.....	508
Citizenship and Immigration Services	322	.....	322	1,564	.....	1,564	1,440	.....	1,440
United States Secret Service	182	.....	182	855	.....	855	878	.....	878
Transportation Security Administration	838	.....	838	3,319	.....	3,319	2,739	.....	2,739
Immigration and Customs Enforcement	587	.....	587	2,863	.....	2,863	2,693	.....	2,693
U.S. Customs and Border Protection	1,368	1	1,368	6,146	3	6,143	5,644	.....	5,644
United States Coast Guard	692	.....	692	5,235	.....	5,235	5,219	.....	5,219
National Protection and Programs Directorate	130	.....	130	637	.....	637	653	.....	653
Federal Emergency Management Agency:									
State and Local Programs									
Firefighter Assistance Grants	56	.....	56	316	.....	316	321	.....	321
Disaster Relief	575	.....	575	3,595	.....	3,595	2,817	.....	2,817
National Flood Insurance Fund	199	231	-32	477	990	-513	521	1,001	-480
Other	96	.....	96	575	.....	575	647	.....	647
<b>Total--Federal Emergency Management Agency</b>	<b>1,058</b>	<b>231</b>	<b>827</b>	<b>6,148</b>	<b>990</b>	<b>5,158</b>	<b>5,590</b>	<b>1,001</b>	<b>4,589</b>
Science and Technology	69	.....	69	369	.....	369	327	.....	327
Domestic Nuclear Detection Office	26	.....	26	150	.....	150	140	.....	140
Other	30	.....	30	193	.....	193	189	.....	189
Proprietary Receipts from the Public	.....	40	-40	.....	128	-128	.....	106	-106
Intrabudgetary Transactions	3	.....	3	-12	.....	-12	-6	.....	-6
Offsetting Governmental Receipts	.....	858	-858	.....	4,871	-4,871	.....	3,402	-3,402
<b>Total--Department of Homeland Security</b>	<b>5,400</b>	<b>1,130</b>	<b>4,270</b>	<b>27,965</b>	<b>5,992</b>	<b>21,973</b>	<b>26,015</b>	<b>4,509</b>	<b>21,506</b>
<b>Department of Housing and Urban Development:</b>									
Public and Indian Housing Programs:									
Tenant Based Rental Assistance	1,566	.....	1,566	9,095	.....	9,095	9,388	.....	9,388
Housing Certificate Fund	21	.....	21	135	.....	135	183	.....	183
Project-Based Rental Assistance	861	.....	861	5,074	.....	5,074	4,857	.....	4,857
Public Housing Capital Fund	146	.....	146	881	.....	881	1,009	.....	1,009
Public Housing Operating Fund	347	.....	347	2,137	.....	2,137	2,095	.....	2,095
Revitalization of Severely Distressed Public Housing (Hope VI)	7	.....	7	42	.....	42	54	.....	54
Native American Housing Block Grant	104	.....	104	322	.....	322	261	.....	261
Other	6	.....	6	31	.....	31	35	.....	35
<b>Total--Public and Indian Housing Programs</b>	<b>3,059</b>	<b>.....</b>	<b>3,059</b>	<b>17,717</b>	<b>.....</b>	<b>17,717</b>	<b>17,882</b>	<b>.....</b>	<b>17,882</b>
Community Planning and Development:									
Housing Opportunities for Persons with AIDS	26	.....	26	143	.....	143	149	.....	149
Community Development Fund	598	.....	598	3,232	.....	3,232	3,360	.....	3,360
Home Investment Partnership Program	97	.....	97	583	.....	583	596	.....	596
Neighborhood Stabilization Program	6	.....	6	37	.....	37	227	.....	227
Homeless Assistance Grants	175	.....	175	972	.....	972	963	.....	963
Other	6	(**)	6	41	(**)	41	48	(**)	48
<b>Total--Community Planning and Development</b>	<b>907</b>	<b>(**)</b>	<b>907</b>	<b>5,010</b>	<b>(**)</b>	<b>5,010</b>	<b>5,343</b>	<b>(**)</b>	<b>5,343</b>
Housing Programs:									
Credit Accounts:									
FHA-Mutual Mortgage Insurance Fund, Program Account	14	.....	14	60	.....	60	5,817	.....	5,817
FHA-Mutual Mortgage Insurance Capital Reserve Account	-892	.....	-892	-5,533	.....	-5,533	-7,927	.....	-7,927
FHA-Mutual Mortgage and Cooperative Housing Insurance Fund, Liquidating Account	4	2	2	18	14	4	14	10	5
FHA-General and Special Risk Fund, Program Account	.....	.....	.....	.....	.....	.....	(**)	.....	(**)
FHA-General and Special Risk Fund, Liquidating Account	3	27	-24	30	103	-73	29	106	-77

**Table 5. Outlays of the U.S. Government, March 2015 and Other Periods - Continued**

Classification	This Month			Current Fiscal Year to Date			Prior Fiscal Year to Date		
	Gross Outlays	Applicable Receipts	Outlays	Gross Outlays	Applicable Receipts	Outlays	Gross Outlays	Applicable Receipts	Outlays
<b>Department of Housing and Urban Development: - Continued</b>									
Housing for the Elderly or Handicapped Fund,									
Liquidating Account	(**)	50	-50	2	273	-271	(**)	238	-238
Housing for the Elderly	60	.....	60	383	.....	383	442	.....	442
Housing for Persons with Disabilities	15	.....	15	97	.....	97	116	.....	116
Other Assisted Housing Programs	22	.....	22	139	.....	139	171	.....	171
Other	4	4	(**)	37	24	13	45	21	24
<b>Total--Housing Programs</b>	<b>-770</b>	<b>84</b>	<b>-854</b>	<b>-4,768</b>	<b>414</b>	<b>-5,182</b>	<b>-1,292</b>	<b>375</b>	<b>-1,667</b>
<b>Government National Mortgage Association:</b>									
Guarantees of Mortgage-Backed Securities	1	(**)	1	14	(**)	14	8	51	-42
Management and Administration	199	.....	199	884	.....	884	844	.....	844
Other	14	.....	14	97	.....	97	101	.....	101
<b>Proprietary Receipts from the Public:</b>									
FHA-General and Special Risk Fund	.....	40	-40	.....	236	-236	.....	283	-283
Other	.....	-7	7	.....	6	-6	.....	15	-15
Intrabudgetary Transactions	-7	.....	-7	-5	.....	-5	11	.....	11
Offsetting Governmental Receipts	.....	1	-1	.....	5	-5	.....	2	-2
<b>Total--Department of Housing and Urban Development</b>	<b>3,404</b>	<b>118</b>	<b>3,286</b>	<b>18,949</b>	<b>662</b>	<b>18,287</b>	<b>22,897</b>	<b>726</b>	<b>22,172</b>
<b>Department of the Interior:</b>									
<b>Land and Minerals Management:</b>									
<b>Bureau of Land Management:</b>									
Management of Lands and Resources	100	.....	100	449	.....	449	441	.....	441
Other	34	3	31	206	24	182	197	62	135
Bureau of Ocean Energy Management	7	.....	7	32	.....	32	14	.....	14
Office of Surface Mining Reclamation and Enforcement	30	.....	30	426	.....	426	337	.....	337
<b>Total--Land and Minerals Management</b>	<b>171</b>	<b>3</b>	<b>168</b>	<b>1,112</b>	<b>24</b>	<b>1,088</b>	<b>989</b>	<b>62</b>	<b>927</b>
<b>Water and Science:</b>									
<b>Bureau of Reclamation:</b>									
Water and Related Resources	90	.....	90	343	.....	343	376	.....	376
Other	66	46	20	291	179	112	776	236	540
Central Utah Project	1	.....	1	8	.....	8	3	.....	3
United States Geological Survey	126	.....	126	560	.....	560	535	.....	535
Bureau of Mines	(**)	.....	(**)	(**)	.....	(**)	(**)	.....	(**)
<b>Total--Water and Science</b>	<b>282</b>	<b>46</b>	<b>236</b>	<b>1,202</b>	<b>179</b>	<b>1,024</b>	<b>1,689</b>	<b>236</b>	<b>1,454</b>
<b>Fish and Wildlife and Parks:</b>									
United States Fish and Wildlife Service	291	.....	291	1,284	.....	1,284	1,292	.....	1,292
National Park Service	267	.....	267	1,464	.....	1,464	1,285	.....	1,285
<b>Total--Fish and Wildlife and Parks</b>	<b>558</b>	<b>.....</b>	<b>558</b>	<b>2,748</b>	<b>.....</b>	<b>2,748</b>	<b>2,577</b>	<b>.....</b>	<b>2,577</b>
Bureau of Indian Affairs and Bureau of Indian Education	337	(**)	337	1,679	(**)	1,678	952	(**)	952
<b>Departmental Offices:</b>									
Mineral Leasing and Associated Payments	121	.....	121	1,112	.....	1,112	1,065	.....	1,065
Other	32	.....	32	132	.....	132	138	.....	138
Insular Affairs	21	.....	21	203	.....	203	232	.....	232
Office of the Special Trustee for American Indians	28	.....	28	169	.....	169	88	.....	88
Department-Wide Programs	133	.....	133	491	.....	491	385	.....	385
Other	28	.....	28	85	.....	85	66	.....	66
Proprietary Receipts from the Public	.....	378	-378	.....	2,794	-2,794	.....	2,606	-2,606
Intrabudgetary Transactions	6	.....	6	-34	.....	-34	-128	.....	-128
<b>Total--Department of the Interior</b>	<b>1,716</b>	<b>426</b>	<b>1,289</b>	<b>8,899</b>	<b>2,998</b>	<b>5,902</b>	<b>8,053</b>	<b>2,904</b>	<b>5,149</b>
<b>Department of Justice:</b>									
General Administration	51	.....	51	148	.....	148	55	.....	55
<b>Legal Activities and U.S. Marshals:</b>									
General Legal Activities	104	.....	104	435	.....	435	407	.....	407
United States Attorneys	232	.....	232	958	.....	958	901	.....	901
United States Marshals Service	174	.....	174	602	.....	602	559	.....	559
Assets Forfeiture Fund	121	.....	121	1,659	.....	1,659	615	.....	615
Other	200	.....	200	-147	.....	-147	942	.....	942
Federal Bureau of Investigation	770	.....	770	3,859	.....	3,859	3,937	.....	3,937
Drug Enforcement Administration	202	.....	202	1,098	.....	1,098	1,084	.....	1,084
Bureau of Alcohol, Tobacco, Firearms, and Explosives	130	.....	130	593	.....	593	532	.....	532
Federal Prison System	797	29	768	3,731	186	3,544	3,452	187	3,265
<b>Office of Justice Programs:</b>									
State and Local Law Enforcement Assistance	52	.....	52	580	.....	580	720	.....	720

**Table 5. Outlays of the U.S. Government, March 2015 and Other Periods - Continued**

Classification	This Month			Current Fiscal Year to Date			Prior Fiscal Year to Date		
	Gross Outlays	Applicable Receipts	Outlays	Gross Outlays	Applicable Receipts	Outlays	Gross Outlays	Applicable Receipts	Outlays
<b>Department of Justice: - Continued</b>									
Community Oriented Policing Services	13	.....	13	124	.....	124	164	.....	164
Crime Victims Fund	62	.....	62	296	.....	296	329	.....	329
Other	80	.....	80	483	.....	483	453	.....	453
Other	84	.....	84	445	.....	445	308	.....	308
Proprietary Receipts from the Public	.....	87	-87	.....	1,225	-1,225	.....	113	-113
Intrabudgetary Transactions	105	.....	105	-598	.....	-598	492	.....	492
Offsetting Governmental Receipts	.....	41	-41	.....	251	-251	.....	257	-257
<b>Total--Department of Justice</b>	<b>3,178</b>	<b>157</b>	<b>3,020</b>	<b>14,266</b>	<b>1,662</b>	<b>12,604</b>	<b>14,951</b>	<b>557</b>	<b>14,394</b>
<b>Department of Labor:</b>									
Employment and Training Administration:									
Training and Employment Services	252	.....	252	1,504	.....	1,504	1,500	.....	1,500
Office of Job Corps	159	.....	159	835	.....	835	768	.....	768
Community Service Employment for Older Americans	34	.....	34	211	.....	211	203	.....	203
Federal Unemployment Benefits and Allowances	43	.....	43	259	.....	259	250	.....	250
Federal Additional Unemployment Compensation									
Program-Recovery Act	-1	.....	-1	-4	.....	-4	-5	.....	-5
State Unemployment Insurance and Employment Service									
Operations	34	.....	34	-178	.....	-178	149	.....	149
Payments to the Unemployment Trust Fund	.....	.....	.....	61	.....	61	5,028	.....	5,028
Advances to the Unemployment Trust Fund and Other Funds	.....	.....	.....	.....	.....	.....	10	.....	10
Program Administration	14	.....	14	45	.....	45	41	.....	41
Unemployment Trust Fund:									
Federal-State Unemployment Insurance:									
State Unemployment Benefits	3,297	.....	3,297	17,036	.....	17,036	25,280	.....	25,280
State Administrative Expenses	235	.....	235	2,072	.....	2,072	1,936	.....	1,936
Federal Administrative Expenses	151	.....	151	313	.....	313	293	.....	293
Other	(**)	.....	(**)	57	.....	57	(**)	.....	(**)
Total--Unemployment Trust Fund	3,682	.....	3,682	19,478	.....	19,478	27,509	.....	27,509
Other	47	.....	47	230	.....	230	284	.....	284
<b>Total--Employment and Training Administration</b>	<b>4,267</b>	<b>.....</b>	<b>4,267</b>	<b>22,442</b>	<b>.....</b>	<b>22,442</b>	<b>35,736</b>	<b>.....</b>	<b>35,736</b>
Pension Benefit Guaranty Corporation	509	92	417	3,040	3,771	-731	2,985	2,484	500
Employment Standards Administration	(**)	.....	(**)	(**)	.....	(**)	1	.....	1
Office of Workers' Compensation Programs:									
Special Benefits	-702	.....	-702	-1,055	.....	-1,055	-362	.....	-362
Energy Employees Occupational Illness Compensation Fund	81	.....	81	512	.....	512	495	.....	495
Special Benefits for Disabled Coal Miners	10	.....	10	60	.....	60	66	.....	66
Black Lung Disability Trust Fund	60	.....	60	149	.....	149	113	.....	113
Other	42	.....	42	187	.....	187	174	.....	174
Wage and Hour Division	34	.....	34	127	.....	127	130	.....	130
Occupational Safety and Health Administration	73	.....	73	285	.....	285	259	.....	259
Mine Safety and Health Administration	51	.....	51	191	.....	191	169	.....	169
Bureau of Labor Statistics	54	.....	54	266	.....	266	252	.....	252
Departmental Management	-114	.....	-114	145	.....	145	162	.....	162
Other	43	.....	43	160	.....	160	155	.....	155
Proprietary Receipts from the Public	.....	(**)	(**)	.....	-3	3	.....	3	-3
Intrabudgetary Transactions	-126	.....	-126	-453	.....	-453	-5,637	.....	-5,637
<b>Total--Department of Labor</b>	<b>4,282</b>	<b>92</b>	<b>4,190</b>	<b>26,056</b>	<b>3,768</b>	<b>22,289</b>	<b>34,697</b>	<b>2,487</b>	<b>32,210</b>
<b>Department of State:</b>									
Administration of Foreign Affairs:									
Diplomatic and Consular Programs	424	.....	424	3,333	.....	3,333	3,917	.....	3,917
Educational and Cultural Exchange Programs	45	.....	45	291	.....	291	270	.....	270
Embassy Security, Construction, and Maintenance	74	.....	74	966	.....	966	718	.....	718
Payment to Foreign Service Retirement and Disability Fund	.....	.....	.....	40	.....	40	79	.....	79
Foreign Service Retirement and Disability Fund	77	.....	77	462	.....	462	460	.....	460
Other	314	.....	314	1,223	.....	1,223	597	.....	597
Total--Administration of Foreign Affairs	933	.....	933	6,314	.....	6,314	6,042	.....	6,042
International Organizations and Conferences	2	.....	2	1,179	.....	1,179	1,411	.....	1,411
Global Health and Child Survival	1,017	.....	1,017	3,683	.....	3,683	3,183	.....	3,183
Migration and Refugee Assistance	213	.....	213	1,037	.....	1,037	1,327	.....	1,327
International Narcotics Control and Law Enforcement	92	.....	92	564	.....	564	625	.....	625
Andean Counterdrug Programs	(**)	.....	(**)	7	.....	7	15	.....	15

**Table 5. Outlays of the U.S. Government, March 2015 and Other Periods - Continued**

Classification	This Month			Current Fiscal Year to Date			Prior Fiscal Year to Date		
	Gross Outlays	Applicable Receipts	Outlays	Gross Outlays	Applicable Receipts	Outlays	Gross Outlays	Applicable Receipts	Outlays
<b>Department of State: - Continued</b>									
Other	45	.....	45	213	.....	213	206	.....	206
Proprietary Receipts from the Public	.....	2	-2	.....	25	-25	.....	38	-38
Intrabudgetary Transactions	37	.....	37	-247	.....	-247	-229	.....	-229
<b>Total--Department of State</b>	<b>2,340</b>	<b>2</b>	<b>2,339</b>	<b>12,752</b>	<b>25</b>	<b>12,727</b>	<b>12,580</b>	<b>38</b>	<b>12,542</b>
<b>Department of Transportation:</b>									
Office of the Secretary	89	.....	89	324	.....	324	353	.....	353
Federal Aviation Administration:									
Operations	675	.....	675	1,568	.....	1,568	1,450	.....	1,450
Airport and Airway Trust Fund:									
Grants-In-Aid for Airports	242	.....	242	1,594	.....	1,594	1,680	.....	1,680
Facilities and Equipment	239	.....	239	1,237	.....	1,237	1,359	.....	1,359
Research, Engineering, and Development	15	.....	15	77	.....	77	64	.....	64
Trust Fund Share of FAA Operations	500	.....	500	3,300	.....	3,300	3,100	.....	3,100
Total--Airport and Airway Trust Fund	997	.....	997	6,208	.....	6,208	6,202	.....	6,202
Other	-34	1	-34	-81	-27	-54	-66	110	-176
<b>Total--Federal Aviation Administration</b>	<b>1,638</b>	<b>1</b>	<b>1,637</b>	<b>7,695</b>	<b>-27</b>	<b>7,722</b>	<b>7,586</b>	<b>110</b>	<b>7,476</b>
Federal Highway Administration:									
Highway Trust Fund:									
Federal-Aid Highways	2,459	.....	2,459	17,573	.....	17,573	18,496	.....	18,496
Other	1	.....	1	3	.....	3	4	.....	4
Highway Infrastructure Investment, Recovery Act	7	.....	7	44	.....	44	103	.....	103
Other Programs	57	.....	57	314	.....	314	12,223	.....	12,223
<b>Total--Federal Highway Administration</b>	<b>2,524</b>	<b>.....</b>	<b>2,524</b>	<b>17,934</b>	<b>.....</b>	<b>17,934</b>	<b>30,825</b>	<b>.....</b>	<b>30,825</b>
Federal Motor Carrier Safety Administration	44	.....	44	269	.....	269	255	.....	255
National Highway Traffic Safety Administration	57	.....	57	435	.....	435	443	.....	443
Federal Railroad Administration:									
Operating Subsidy Grants to the National Railroad Passenger Corporation	.....	.....	.....	125	.....	125	200	.....	200
Capital and Debt Service Grants to the National Railroad Passenger Corporation	(**)	.....	(**)	508	.....	508	453	.....	453
Capital Assistance for High Speed Rail Corridors and Intercity Passenger Rail Service	85	.....	85	433	.....	433	462	.....	462
Other	37	.....	37	219	.....	219	217	.....	217
<b>Total--Federal Railroad Administration</b>	<b>122</b>	<b>.....</b>	<b>122</b>	<b>1,284</b>	<b>.....</b>	<b>1,284</b>	<b>1,331</b>	<b>.....</b>	<b>1,331</b>
Federal Transit Administration:									
Formula Grants	2	.....	2	21	.....	21	52	.....	52
Capital Investment Grants	123	.....	123	831	.....	831	814	.....	814
Transit Formula Grants	918	.....	918	3,941	.....	3,941	4,046	.....	4,046
Transit Capital Assistance, Recovery Act	10	.....	10	57	.....	57	104	.....	104
Other	70	.....	70	243	.....	243	362	.....	362
<b>Total--Federal Transit Administration</b>	<b>1,122</b>	<b>.....</b>	<b>1,122</b>	<b>5,094</b>	<b>.....</b>	<b>5,094</b>	<b>5,378</b>	<b>.....</b>	<b>5,378</b>
Maritime Administration	81	(**)	81	251	7	244	41	3	38
Other	48	3	45	202	15	187	206	13	193
Proprietary Receipts from the Public	.....	3	-3	.....	49	-49	.....	31	-31
Intrabudgetary Transactions:									
Payment from the General Fund, Highway Trust Fund	.....	.....	.....	.....	.....	.....	-11,693	.....	-11,693
Other	(**)	.....	(**)	(**)	.....	(**)	(**)	.....	(**)
Offsetting Governmental Receipts	.....	(**)	(**)	.....	(**)	(**)	.....	1	-1
<b>Total--Department of Transportation</b>	<b>5,725</b>	<b>8</b>	<b>5,717</b>	<b>33,488</b>	<b>44</b>	<b>33,444</b>	<b>34,726</b>	<b>157</b>	<b>34,569</b>
<b>Department of the Treasury:</b>									
Departmental Offices:									
Exchange Stabilization Fund	5	(**)	4	5	20	-16	.....	55	-55
Grants for Specified Energy Property in Lieu of Tax Credit	61	.....	61	1,029	.....	1,029	1,584	.....	1,584
Housing and Economic Recovery Programs	.....	.....	.....	1	.....	1	3	.....	3
Troubled Asset Relief Program	350	.....	350	1,936	.....	1,936	2,283	.....	2,283
Other	72	.....	72	871	.....	871	1,086	.....	1,086
Bureau of the Fiscal Service:									
Financial Management Service:									
Payment to the Resolution Funding Corporation	.....	.....	.....	1,314	.....	1,314	1,314	.....	1,314
Financial Agent Services	39	.....	39	287	.....	287	273	.....	273
Interest Paid to Credit Financing Accounts	.....	.....	.....	.....	.....	.....	1	.....	1
Claims, Judgments, and Relief Acts	238	.....	238	1,852	.....	1,852	927	.....	927
Other	48	1	47	269	3	266	1,451	.....	1,451
<b>Total--Financial Management Service</b>	<b>325</b>	<b>1</b>	<b>324</b>	<b>3,722</b>	<b>3</b>	<b>3,719</b>	<b>3,965</b>	<b>.....</b>	<b>3,965</b>

**Table 5. Outlays of the U.S. Government, March 2015 and Other Periods - Continued**

Classification	This Month			Current Fiscal Year to Date			Prior Fiscal Year to Date		
	Gross Outlays	Applicable Receipts	Outlays	Gross Outlays	Applicable Receipts	Outlays	Gross Outlays	Applicable Receipts	Outlays
<b>Department of the Treasury: - Continued</b>									
Bureau of the Public Debt	327	.....	327	478	.....	478	291	.....	291
Total--Bureau of the Fiscal Service	652	1	651	4,200	3	4,196	4,256	.....	4,256
Federal Financing Bank	-348	.....	-348	-673	.....	-673	-505	.....	-505
Alcohol and Tobacco Tax and Trade Bureau:									
Salaries and Expenses	11	.....	11	49	.....	49	46	.....	46
Internal Revenue Collections for Puerto Rico	21	.....	21	178	.....	178	158	.....	158
Bureau of Engraving and Printing	16	.....	16	-29	.....	-29	-15	.....	-15
United States Mint	215	301	-87	1,508	1,749	-240	1,536	1,637	-101
Internal Revenue Service:									
Taxpayer Services	291	.....	291	1,113	.....	1,113	1,146	.....	1,146
Enforcement	571	.....	571	2,412	.....	2,412	2,447	.....	2,447
Operations Support	438	.....	438	2,087	.....	2,087	2,049	.....	2,049
Build America Bond Payments, Recovery Act	139	.....	139	1,141	.....	1,141	1,835	.....	1,835
Refundable Premium Tax Credits and Cost Sharing									
Reductions	2,645	.....	2,645	11,995	.....	11,995	1,694	.....	1,694
Payment Where Earned Income Credit Exceeds Liability for Tax	14,948	.....	14,948	52,115	.....	52,115	52,497	.....	52,497
Payment Where Child Tax Credit Exceeds Liability for Tax	3,116	.....	3,116	17,925	.....	17,925	18,744	.....	18,744
Payment Where American Opportunity Tax Credit Exceeds Liability for Tax	864	.....	864	3,278	.....	3,278	3,352	.....	3,352
Refunding Internal Revenue Collections, Interest	115	.....	115	549	.....	549	500	.....	500
Other	66	(**)	65	550	(**)	549	664	1	663
Total--Internal Revenue Service	23,192	(**)	23,191	93,163	(**)	93,163	84,929	1	84,928
Comptroller of the Currency	102	560	-459	509	1,017	-508	511	509	2
Interest on the Public Debt:									
Interest on Treasury Debt Securities (Gross):									
Public Issues (Accrual Basis)	16,341	.....	16,341	103,146	.....	103,146	117,345	.....	117,345
Special Issues (Cash Basis)	-2,452	.....	-2,452	57,590	.....	57,590	75,527	.....	75,527
Total--Interest on Treasury Debt Securities (Gross)	13,889	.....	13,889	160,736	.....	160,736	192,872	.....	192,872
Total--Interest on the Public Debt	13,889	.....	13,889	160,736	.....	160,736	192,872	.....	192,872
Other	10	.....	10	47	.....	47	44	.....	44
Proprietary Receipts from the Public	.....	4,434	-4,434	.....	13,617	-13,617	.....	66,501	-66,501
Intrabudgetary Transactions	-362	.....	-362	-1,169	.....	-1,169	-1,904	.....	-1,904
<b>Total--Department of the Treasury</b>	<b>37,883</b>	<b>5,297</b>	<b>32,586</b>	<b>262,361</b>	<b>16,406</b>	<b>245,955</b>	<b>286,884</b>	<b>68,703</b>	<b>218,181</b>
<b>Department of Veterans Affairs:</b>									
Joint DOD-VA Medical Facility Demonstration Fund	33	.....	33	189	.....	189	177	.....	177
Veterans Health Administration:									
Veterans Choice Fund, Veterans Health Administration	9	.....	9	52	.....	52	.....	.....	.....
Medical Services	4,443	.....	4,443	24,644	.....	24,644	22,184	.....	22,184
Medical Support and Compliance	504	.....	504	2,982	.....	2,982	2,786	.....	2,786
Medical Facilities	440	.....	440	2,510	.....	2,510	2,598	.....	2,598
Other	95	37	58	611	224	388	542	212	330
Benefits Programs:									
Public Enterprise Funds:									
Housing Accounts	(**)	1	-1	3	10	-7	2	11	-8
Other	84	78	6	485	451	34	477	476	2
Compensation and Pensions	984	.....	984	36,790	.....	36,790	34,328	.....	34,328
Readjustment Benefits	673	.....	673	7,220	.....	7,220	7,324	.....	7,324
Veterans Housing Benefit Program Fund	533	.....	533	678	.....	678	2,075	.....	2,075
Insurance Funds:									
National Service Life	103	.....	103	508	.....	508	465	.....	465
Veterans Special Life	20	2	18	87	56	31	84	60	23
Other	11	.....	11	24	.....	24	41	.....	41
Total--Benefits Programs	2,408	81	2,327	45,795	516	45,279	44,797	547	44,250
Departmental Administration:									
Construction	134	.....	134	895	.....	895	613	.....	613
Information Technology Systems	351	.....	351	1,867	.....	1,867	1,629	.....	1,629
General Operating Expenses	-35	(**)	-35	1,173	(**)	1,173	1,112	(**)	1,112
Other	71	.....	71	624	.....	624	602	.....	602
Proprietary Receipts from the Public:									
National Service Life	.....	14	-14	.....	44	-44	.....	15	-15
Other	.....	576	-576	.....	2,048	-2,048	.....	1,619	-1,619
Intrabudgetary Transactions	10	.....	10	-8	.....	-8	-506	.....	-506
<b>Total--Department of Veterans Affairs</b>	<b>8,463</b>	<b>708</b>	<b>7,755</b>	<b>81,336</b>	<b>2,832</b>	<b>78,505</b>	<b>76,535</b>	<b>2,393</b>	<b>74,142</b>

**Table 5. Outlays of the U.S. Government, March 2015 and Other Periods - Continued**

Classification	This Month			Current Fiscal Year to Date			Prior Fiscal Year to Date		
	Gross Outlays	Applicable Receipts	Outlays	Gross Outlays	Applicable Receipts	Outlays	Gross Outlays	Applicable Receipts	Outlays
<b>Corps of Engineers:</b>									
Construction	175	.....	175	1,013	.....	1,013	961	.....	961
Operation and Maintenance	263	.....	263	1,465	.....	1,465	1,227	.....	1,227
Flood Control and Coastal Emergencies	63	.....	63	350	.....	350	449	.....	449
Rivers and Harbors Contributed Funds	38	.....	38	198	.....	198	192	.....	192
Other	61	.....	61	695	.....	695	640	.....	640
Proprietary Receipts from the Public	.....	27	-27	.....	491	-491	.....	226	-226
Intrabudgetary Transactions	1	.....	1	109	.....	109	(**)	.....	(**)
<b>Total--Corps of Engineers</b>	<b>601</b>	<b>27</b>	<b>574</b>	<b>3,830</b>	<b>491</b>	<b>3,339</b>	<b>3,468</b>	<b>226</b>	<b>3,241</b>
<b>Other Defense Civil Programs:</b>									
Military Retirement:									
Payment to Military Retirement Fund	.....	.....	.....	75,562	.....	75,562	72,885	.....	72,885
Military Retirement Fund	399	.....	399	28,228	.....	28,228	27,547	.....	27,547
Retiree Health Care:									
Payment to Department of Defense Medicare-Eligible Retiree Health Care Fund	.....	.....	.....	4,005	.....	4,005	4,250	.....	4,250
Department of Defense Medicare-Eligible Retiree Health Care Fund	816	.....	816	5,010	.....	5,010	4,714	.....	4,714
Educational Benefits	36	.....	36	197	.....	197	208	.....	208
Other	22	.....	22	117	.....	117	100	.....	100
Proprietary Receipts from the Public	.....	1	-1	.....	10	-10	.....	6	-6
Intrabudgetary Transactions	870	.....	870	-77,020	.....	-77,020	-78,546	.....	-78,546
<b>Total--Other Defense Civil Programs</b>	<b>2,143</b>	<b>1</b>	<b>2,142</b>	<b>36,099</b>	<b>10</b>	<b>36,089</b>	<b>31,157</b>	<b>6</b>	<b>31,152</b>
<b>Environmental Protection Agency:</b>									
Science and Technology	78	.....	78	383	.....	383	359	.....	359
Environmental Programs and Management	253	.....	253	1,305	.....	1,305	1,260	.....	1,260
State and Tribal Assistance Grants	301	.....	301	2,466	.....	2,466	2,276	.....	2,276
Payment to the Hazardous Substance Superfund	.....	.....	.....	981	.....	981	939	.....	939
Hazardous Substance Superfund	54	.....	54	-672	.....	-672	304	.....	304
Other	-39	(**)	-40	41	27	14	61	28	33
Proprietary Receipts from the Public	.....	2	-2	.....	233	-233	.....	66	-66
Intrabudgetary Transactions	-31	.....	-31	-954	.....	-954	-909	.....	-909
Offsetting Governmental Receipts	.....	4	-4	.....	14	-14	.....	13	-13
<b>Total--Environmental Protection Agency</b>	<b>616</b>	<b>7</b>	<b>609</b>	<b>3,551</b>	<b>274</b>	<b>3,277</b>	<b>4,290</b>	<b>107</b>	<b>4,184</b>
<b>Executive Office of the President:</b>									
The White House	5	.....	5	28	.....	28	27	.....	27
Office of Management and Budget	7	.....	7	44	.....	44	42	.....	42
Unanticipated Needs	1	.....	1	6	.....	6	7	.....	7
Other	22	.....	22	117	.....	117	105	.....	105
Proprietary Receipts from the Public	.....	(**)	(**)	.....	(**)	(**)	.....	(**)	(**)
Intrabudgetary Transactions	(**)	.....	(**)	(**)	.....	(**)	(**)	.....	(**)
<b>Total--Executive Office of the President</b>	<b>35</b>	<b>(**)</b>	<b>35</b>	<b>195</b>	<b>(**)</b>	<b>195</b>	<b>180</b>	<b>(**)</b>	<b>180</b>
<b>General Services Administration:</b>									
Real Property Activities	-50	.....	-50	-304	.....	-304	-292	.....	-292
Supply and Technology Activities	155	.....	155	-231	.....	-231	-14	.....	-14
General Activities	27	.....	27	119	.....	119	40	.....	40
Proprietary Receipts from the Public	.....	2	-2	.....	51	-51	.....	45	-45
Intrabudgetary Transactions	2	.....	2	(**)	.....	(**)	-4	.....	-4
<b>Total--General Services Administration</b>	<b>135</b>	<b>2</b>	<b>133</b>	<b>-416</b>	<b>51</b>	<b>-467</b>	<b>-269</b>	<b>45</b>	<b>-314</b>
<b>International Assistance Programs:</b>									
Millennium Challenge Corporation	52	.....	52	349	.....	349	617	.....	617
International Security Assistance:									
Pakistan Counterinsurgency Capability Fund	.....	.....	.....	.....	.....	.....	425	.....	425
Foreign Military Financing Program	699	.....	699	4,568	.....	4,568	4,281	.....	4,281
Economic Support Fund	414	.....	414	2,907	.....	2,907	2,080	.....	2,080
Other	115	(**)	115	460	15	445	496	67	430
<b>Total--International Security Assistance</b>	<b>1,228</b>	<b>(**)</b>	<b>1,228</b>	<b>7,935</b>	<b>15</b>	<b>7,920</b>	<b>7,282</b>	<b>67</b>	<b>7,216</b>
Multilateral Assistance:									
Contribution to the International Development Association	.....	.....	.....	1,288	.....	1,288	.....	.....	.....
Other	344	.....	344	1,691	.....	1,691	452	.....	452
<b>Total--Multilateral Assistance</b>	<b>344</b>	<b>.....</b>	<b>344</b>	<b>2,979</b>	<b>.....</b>	<b>2,979</b>	<b>452</b>	<b>.....</b>	<b>452</b>



**Table 5. Outlays of the U.S. Government, March 2015 and Other Periods - Continued**

Classification	This Month			Current Fiscal Year to Date			Prior Fiscal Year to Date		
	Gross Outlays	Applicable Receipts	Outlays	Gross Outlays	Applicable Receipts	Outlays	Gross Outlays	Applicable Receipts	Outlays
<b>International Assistance Programs: - Continued</b>									
Agency for International Development:									
Development Assistance Program	197	.....	197	1,240	.....	1,240	1,044	.....	1,044
Assistance for Europe, Eurasia and Central Asia	9	.....	9	90	.....	90	222	.....	222
International Disaster Assistance	195	.....	195	1,263	.....	1,263	763	.....	763
Operating Expenses	116	.....	116	576	.....	576	544	.....	544
Other	61	.....	61	-113	.....	-113	100	.....	100
Proprietary Receipts from the Public	.....	(**)	(**)	.....	2	-2	.....	1	-1
Intrabudgetary Transactions	-2	.....	-2	2	.....	2	(**)	.....	(**)
<b>Total--Agency for International Development</b>	<b>575</b>	<b>(**)</b>	<b>574</b>	<b>3,057</b>	<b>2</b>	<b>3,056</b>	<b>2,673</b>	<b>1</b>	<b>2,672</b>
Overseas Private Investment Corporation:									
Overseas Private Investment Corporation Accounts	11	11	(**)	43	96	-53	40	100	-60
Proprietary Receipts from the Public	.....	15	-15	.....	71	-71	.....	73	-73
<b>Total--Overseas Private Investment Corporation</b>	<b>11</b>	<b>26</b>	<b>-15</b>	<b>43</b>	<b>167</b>	<b>-124</b>	<b>40</b>	<b>173</b>	<b>-132</b>
Peace Corps	46	(**)	46	189	2	187	163	(**)	162
International Monetary Programs	254	.....	254	959	.....	959	-136	.....	-136
Military Sales Program:									
Foreign Military Sales Trust Fund	2,408	.....	2,408	12,813	.....	12,813	13,110	.....	13,110
Other	7	(**)	7	39	27	12	25	13	11
Proprietary Receipts from the Public	.....	2,453	-2,453	.....	12,876	-12,876	.....	13,932	-13,932
Other	11	(**)	11	57	1	56	50	1	48
<b>Total--International Assistance Programs</b>	<b>4,936</b>	<b>2,479</b>	<b>2,457</b>	<b>28,420</b>	<b>13,090</b>	<b>15,331</b>	<b>24,276</b>	<b>14,187</b>	<b>10,089</b>
<b>National Aeronautics and Space Administration:</b>									
Science	399	.....	399	2,503	.....	2,503	2,392	.....	2,392
Aeronautics	50	.....	50	278	.....	278	267	.....	267
Exploration	424	.....	424	2,509	.....	2,509	1,897	.....	1,897
Cross Agency Support	252	.....	252	1,381	.....	1,381	1,400	.....	1,400
Space Operations	320	.....	320	1,840	.....	1,840	1,943	.....	1,943
Other	98	.....	98	593	.....	593	574	.....	574
Proprietary Receipts from the Public	.....	(**)	(**)	.....	1	-1	.....	3	-3
Intrabudgetary Transactions	(**)	.....	(**)	-1	.....	-1	(**)	.....	(**)
<b>Total--National Aeronautics and Space Administration</b>	<b>1,543</b>	<b>(**)</b>	<b>1,543</b>	<b>9,102</b>	<b>1</b>	<b>9,101</b>	<b>8,473</b>	<b>3</b>	<b>8,470</b>
<b>National Science Foundation:</b>									
Research and Related Activities	423	.....	423	2,340	.....	2,340	2,455	.....	2,455
Education and Human Resources	71	.....	71	381	.....	381	404	.....	404
Other	44	.....	44	265	.....	265	289	.....	289
Proprietary Receipts from the Public	.....	(**)	(**)	.....	16	-16	.....	19	-19
<b>Total--National Science Foundation</b>	<b>538</b>	<b>(**)</b>	<b>538</b>	<b>2,987</b>	<b>16</b>	<b>2,971</b>	<b>3,149</b>	<b>19</b>	<b>3,130</b>
<b>Office of Personnel Management:</b>									
Government Payment for Annuity, Employees Health and Life Insurance Benefits									
Civil Service Retirement and Disability Fund	967	.....	967	5,787	.....	5,787	5,566	.....	5,566
Employees Life Insurance Fund	6,800	.....	6,800	40,642	.....	40,642	39,470	.....	39,470
Employees and Retired Employees Health Benefits Fund	276	297	-21	1,342	1,591	-249	1,428	2,088	-660
Other	3,902	4,200	-299	23,850	23,640	210	22,371	22,521	-150
Proprietary Receipts from the Public	21	.....	21	88	.....	88	267	.....	267
Intrabudgetary Transactions:	.....	1	-1	.....	4	-4	.....	6	-6
Postal Service Contributions	.....	.....	.....	-765	.....	-765	-773	.....	-773
Civil Service Retirement and Disability Fund:									
Other	-5	.....	-5	-23	.....	-23	-23	.....	-23
<b>Total--Office of Personnel Management</b>	<b>11,961</b>	<b>4,499</b>	<b>7,462</b>	<b>70,921</b>	<b>25,235</b>	<b>45,685</b>	<b>68,306</b>	<b>24,615</b>	<b>43,691</b>
<b>Small Business Administration:</b>									
Salaries and Expenses	61	.....	61	-54	(**)	-54	13	(**)	13
Business Loans Program	5	(**)	5	402	5	397	559	7	552
Disaster Loans Program	2	(**)	2	243	(**)	242	258	1	257
Other	16	1	14	81	9	72	27	9	18
Proprietary Receipts from the Public	.....	1	-1	.....	1,866	-1,866	.....	1,124	-1,124
Intrabudgetary Transactions	4	.....	4	1	.....	1	(**)	.....	(**)
<b>Total--Small Business Administration</b>	<b>88</b>	<b>2</b>	<b>85</b>	<b>673</b>	<b>1,881</b>	<b>-1,208</b>	<b>858</b>	<b>1,141</b>	<b>-283</b>
<b>Social Security Administration:</b>									
Payments to Social Security Trust Funds	100	.....	100	14,030	.....	14,030	10,774	.....	10,774
Supplemental Security Income Program	618	.....	618	29,164	.....	29,164	28,477	.....	28,477
Federal Old-Age and Survivors Insurance Trust Fund (Off-Budget):									
Benefit Payments	61,405	.....	61,405	362,321	.....	362,321	344,742	.....	344,742
Administrative Expenses	248	.....	248	1,777	.....	1,777	1,653	.....	1,653
<b>Total--Federal Old-Age and Survivors Insurance Trust Fund (Off-Budget)</b>	<b>61,653</b>	<b>.....</b>	<b>61,653</b>	<b>364,098</b>	<b>.....</b>	<b>364,098</b>	<b>346,396</b>	<b>.....</b>	<b>346,396</b>

**Table 5. Outlays of the U.S. Government, March 2015 and Other Periods - Continued**

Classification	This Month			Current Fiscal Year to Date			Prior Fiscal Year to Date		
	Gross Outlays	Applicable Receipts	Outlays	Gross Outlays	Applicable Receipts	Outlays	Gross Outlays	Applicable Receipts	Outlays
<b>Social Security Administration: - Continued</b>									
Federal Disability Insurance Trust Fund (Off-Budget):									
Benefit Payments	11,982	.....	11,982	70,973	.....	70,973	70,233	.....	70,233
Administrative Expenses	256	.....	256	1,410	.....	1,410	1,337	.....	1,337
<b>Total--Federal Disability Insurance Trust Fund (Off-Budget)</b>	<b>12,238</b>	<b>.....</b>	<b>12,238</b>	<b>72,382</b>	<b>.....</b>	<b>72,382</b>	<b>71,570</b>	<b>.....</b>	<b>71,570</b>
Other	17	.....	17	123	.....	123	185	.....	185
Proprietary Receipts from the Public:									
On-Budget	.....	219	-219	.....	1,173	-1,173	.....	1,216	-1,216
Off-Budget	.....	16	-16	.....	44	-44	.....	76	-76
Intrabudgetary Transactions:									
Off-Budget <sup>4</sup>	-99	.....	-99	-14,028	.....	-14,028	-10,773	.....	-10,773
<b>Total--Social Security Administration</b>	<b>74,526</b>	<b>235</b>	<b>74,292</b>	<b>465,769</b>	<b>1,217</b>	<b>464,552</b>	<b>446,629</b>	<b>1,293</b>	<b>445,336</b>
<b>Independent Agencies:</b>									
Broadcasting Board of Governors	64	(**)	64	355	-1	356	333	-1	334
Bureau of Consumer Financial Protection	48	(**)	48	254	(**)	254	211	(**)	211
Corporation for National and Community Service	83	(**)	83	487	3	484	482	1	480
Corporation for Public Broadcasting	.....	.....	.....	445	.....	445	445	.....	445
District of Columbia:									
Courts	33	.....	33	140	.....	140	144	.....	144
General and Special Payments	38	(**)	38	339	16	324	324	(**)	324
Equal Employment Opportunity Commission	29	1	28	184	1	183	168	(**)	168
Export-Import Bank of the United States	-43	197	-239	-259	254	-514	-320	46	-367
Federal Communications Commission:									
Universal Service Fund	664	.....	664	4,353	.....	4,353	4,798	.....	4,798
Spectrum Auction Program Account	(**)	.....	(**)	(**)	.....	(**)	(**)	.....	(**)
Other	49	2	47	117	10	108	134	16	119
Federal Deposit Insurance Corporation:									
Deposit Insurance Fund	-1,209	.....	-1,209	-4,449	.....	-4,449	-6,439	.....	-6,439
FSLIC Resolution Fund	(**)	(**)	(**)	1	(**)	1	2	3	-1
<b>Total--Federal Deposit Insurance Corporation</b>	<b>-1,209</b>	<b>(**)</b>	<b>-1,209</b>	<b>-4,448</b>	<b>(**)</b>	<b>-4,448</b>	<b>-6,437</b>	<b>3</b>	<b>-6,440</b>
Federal Drug Control Programs	19	.....	19	117	.....	117	114	.....	114
Federal Housing Finance Agency	27	.....	27	128	.....	128	122	.....	122
Institute of Museum and Library Services	13	(**)	13	113	(**)	113	119	(**)	119
Intelligence Community Management Account	48	.....	48	239	.....	239	219	.....	219
Legal Services Corporation	30	.....	30	180	.....	180	150	.....	150
National Archives and Records Administration	35	2	32	193	12	181	190	11	179
National Credit Union Administration	24	68	-44	167	571	-404	-911	1,289	-2,199
National Endowment for the Arts	11	(**)	11	68	(**)	67	67	(**)	67
National Endowment for the Humanities	12	(**)	12	69	(**)	69	63	(**)	63
National Labor Relations Board	21	(**)	21	134	(**)	134	130	(**)	130
Nuclear Regulatory Commission	89	17	73	516	467	49	486	404	83
Postal Service:									
Off-Budget:									
Public Enterprise Funds	5,776	5,967	-191	39,689	41,085	-1,396	38,271	39,823	-1,552
Other	.....	.....	.....	259	.....	259	256	.....	256
Other	.....	.....	.....	100	.....	100	78	.....	78
Railroad Retirement Board:									
Federal Windfall Subsidy	3	.....	3	16	.....	16	18	.....	18
Federal Payments to the Railroad Retirement Accounts	(**)	.....	(**)	395	.....	395	319	.....	319
Railroad Unemployment Insurance Trust Fund:									
Benefit Payments	7	.....	7	41	.....	41	47	.....	47
Transfer To Administrative Funds	1	.....	1	5	.....	5	6	.....	6
Rail Industry Pension Fund:									
Benefit Payments	428	.....	428	2,545	.....	2,545	2,500	.....	2,500
Advances from FOASDI Fund	.....	.....	.....	.....	.....	.....	-499	.....	-499
OASDI Certifications	-2	.....	-2	-9	.....	-9	491	.....	491
Transfer to Administrative Funds	5	.....	5	23	.....	23	29	.....	29
Other	(**)	.....	(**)	-1	.....	-1	-1	.....	-1
National Railroad Retirement Investment Trust:									
Administrative Expenses	2	.....	2	30	.....	30	28	.....	28
Transfers to the Railroad Retirement Trust Funds from the National Railroad Retirement Investment Trust	152	.....	152	648	.....	648	689	.....	689

**Table 5. Outlays of the U.S. Government, March 2015 and Other Periods - Continued**

Classification	This Month			Current Fiscal Year to Date			Prior Fiscal Year to Date		
	Gross Outlays	Applicable Receipts	Outlays	Gross Outlays	Applicable Receipts	Outlays	Gross Outlays	Applicable Receipts	Outlays
<b>Independent Agencies: - Continued</b>									
Railroad Social Security Equivalent Benefit Account:									
Benefit Payments	589	.....	589	3,505	.....	3,505	3,398	.....	3,398
Transfer To Administrative Funds	2	.....	2	11	.....	11	13	.....	13
Other	5	.....	5	12	.....	12	-6	.....	-6
Proprietary Receipts from the Public	.....	824	-824	.....	242	-242	.....	2,589	-2,589
Intrabudgetary Transactions:									
Other	-152	.....	-152	-1,043	.....	-1,043	-1,007	.....	-1,007
<b>Total--Railroad Retirement Board</b>	<b>1,038</b>	<b>824</b>	<b>214</b>	<b>6,178</b>	<b>242</b>	<b>5,937</b>	<b>6,027</b>	<b>2,589</b>	<b>3,438</b>
Securities and Exchange Commission	-439	(**)	-439	201	(**)	201	265	(**)	264
Smithsonian Institution	95	.....	95	472	(**)	472	479	(**)	479
Tennessee Valley Authority	3,552	3,533	19	21,711	21,547	165	26,415	27,600	-1,185
Other	188	95	92	1,692	354	1,338	1,677	314	1,363
<b>Total--Independent Agencies</b>	<b>10,297</b>	<b>10,706</b>	<b>-408</b>	<b>74,193</b>	<b>64,560</b>	<b>9,633</b>	<b>74,499</b>	<b>72,097</b>	<b>2,402</b>
<b>Undistributed Offsetting Receipts:</b>									
Other Interest	.....	.....	.....	.....	(**)	(**)	.....	(**)	(**)
Employer Share, Employee Retirement:									
Department of Health and Human Services:									
Federal Hospital Insurance Trust Fund:									
Federal Employer Contributions	-275	.....	-275	-1,713	.....	-1,713	-1,733	.....	-1,733
Postal Service Employer Contributions	-52	.....	-52	-307	.....	-307	-299	.....	-299
Department of State:									
Foreign Service Retirement and Disability Fund	-28	.....	-28	-166	.....	-166	-162	.....	-162
Other Defense Civil Programs:									
Military Retirement Fund	-1,682	.....	-1,682	-15,972	.....	-15,972	-16,533	.....	-16,533
Department of Defense Medicare-Eligible Retiree Health Care Fund									
Care Fund	.....	.....	.....	-7,229	.....	-7,229	-7,650	.....	-7,650
Office of Personnel Management:									
Civil Service Retirement and Disability Fund	-2,581	.....	-2,581	-13,629	.....	-13,629	-12,278	.....	-12,278
Social Security Administration:									
Federal Old-Age and Survivors Insurance Trust Fund:									
Federal Employer Contributions	-1,138	.....	-1,138	-6,600	.....	-6,600	-6,535	.....	-6,535
Federal Disability Insurance Trust Fund:									
Federal Employer Contributions	-194	.....	-194	-1,121	.....	-1,121	-1,110	.....	-1,110
Other	(**)	.....	(**)	-2	.....	-2	-4	.....	-4
<b>Total--Employer Share, Employee Retirement</b>	<b>-5,950</b>	<b>.....</b>	<b>-5,950</b>	<b>-46,739</b>	<b>.....</b>	<b>-46,739</b>	<b>-46,304</b>	<b>.....</b>	<b>-46,304</b>
Interest Received by Trust Funds:									
Judicial Branch:									
Judicial Survivors Annuity Fund	1	.....	1	11	.....	11	-6	.....	-6
Department of Health and Human Services:									
Federal Hospital Insurance Trust Fund									
Federal Hospital Insurance Trust Fund	-16	.....	-16	-4,368	.....	-4,368	-4,481	.....	-4,481
Federal Supplementary Medical Insurance Trust Fund	-261	.....	-261	-1,364	.....	-1,364	-1,197	.....	-1,197
Department of Homeland Security:									
Oil Spill Liability Trust Fund	-3	.....	-3	-17	.....	-17	-13	.....	-13
Other	-1	.....	-1	-3	.....	-3	-4	.....	-4
Department of Labor:									
Unemployment Trust Fund	-15	.....	-15	-424	.....	-424	-341	.....	-341
Department of State:									
Foreign Service Retirement and Disability Fund	(**)	.....	(**)	-314	.....	-314	-326	.....	-326
Department of Transportation:									
Airport and Airway Trust Fund	-5	.....	-5	-133	.....	-133	-120	.....	-120
Department of Veterans Affairs:									
National Service Life Insurance Fund									
National Service Life Insurance Fund	-1	.....	-1	-120	.....	-120	-141	.....	-141
United States Government Life Insurance Fund	(**)	.....	(**)	(**)	.....	(**)	(**)	.....	(**)
Corps of Engineers	(**)	.....	(**)	-46	.....	-46	-61	.....	-61
Other Defense Civil Programs:									
Military Retirement Fund	2,179	.....	2,179	13,657	.....	13,657	1,644	.....	1,644
Educational Benefits Fund	3	.....	3	-19	.....	-19	-36	.....	-36
Armed Forces Retirement Home	(**)	.....	(**)	-1	.....	-1	-1	.....	-1
Environmental Protection Agency	-10	.....	-10	-16	.....	-16	-35	.....	-35
Office of Personnel Management:									
Civil Service Retirement and Disability Fund	-16	.....	-16	-14,818	.....	-14,818	-15,676	.....	-15,676
Social Security Administration:									
Federal Old-Age and Survivors Insurance Trust Fund									
Federal Old-Age and Survivors Insurance Trust Fund	-36	.....	-36	-46,575	.....	-46,575	-48,056	.....	-48,056
Federal Disability Insurance Trust Fund	-21	.....	-21	-1,509	.....	-1,509	-2,144	.....	-2,144
Independent Agencies:									
Railroad Retirement Board	-7	.....	-7	-35	.....	-35	-17	.....	-17

**Table 5. Outlays of the U.S. Government, March 2015 and Other Periods - Continued**

Classification	This Month			Current Fiscal Year to Date			Prior Fiscal Year to Date		
	Gross Outlays	Applicable Receipts	Outlays	Gross Outlays	Applicable Receipts	Outlays	Gross Outlays	Applicable Receipts	Outlays
<b>Undistributed Offsetting Receipts: - Continued</b>									
Other	(**)	.....	(**)	-8	.....	-8	-11	.....	-11
Other	-13	.....	-13	-31	.....	-31	-69	.....	-69
Total--Interest Received by Trust Funds	1,778	.....	1,778	-56,134	.....	-56,134	-71,092	.....	-71,092
Rents and Royalties on the Outer Continental Shelf Lands	.....	475	-475	.....	2,271	-2,271	.....	3,198	-3,198
<b>Total--Undistributed Offsetting Receipts</b>	<b>-4,172</b>	<b>475</b>	<b>-4,648</b>	<b>-102,873</b>	<b>2,271</b>	<b>-105,144</b>	<b>-117,396</b>	<b>3,198</b>	<b>-120,594</b>
<b>Total Outlays</b>	<b>322,361</b>	<b>35,264</b>	<b>287,097</b>	<b>2,059,458</b>	<b>200,185</b>	<b>1,859,273</b>	<b>2,002,810</b>	<b>266,931</b>	<b>1,735,879</b>
<b>Total On-Budget</b>	<b>244,183</b>	<b>29,281</b>	<b>214,902</b>	<b>1,652,864</b>	<b>159,056</b>	<b>1,493,808</b>	<b>1,614,937</b>	<b>227,032</b>	<b>1,387,905</b>
<b>Total Off-Budget</b>	<b>78,178</b>	<b>5,983</b>	<b>72,195</b>	<b>406,594</b>	<b>41,129</b>	<b>365,465</b>	<b>387,873</b>	<b>39,899</b>	<b>347,974</b>
<b>Total Surplus (+) or Deficit (-)</b>			<b>-52,910</b>			<b>-439,473</b>			<b>-413,266</b>
<b>Total On-Budget</b>			<b>-56,120</b>			<b>-445,888</b>			<b>-421,200</b>
<b>Total Off-Budget</b>			<b>+3,210</b>			<b>+6,415</b>			<b>+7,934</b>

**MEMORANDUM**

Receipts Offset Against Outlays (In Millions)

	Current Fiscal Year to Date	Comparable Period Prior Fiscal Year
Proprietary Receipts	90,762	154,209
Intrabudgetary Transactions	333,527	357,940
Governmental Receipts	5,609	4,079
<b>Total Receipts Offset Against Outlays</b>	<b>429,898</b>	<b>516,227</b>

1 Outlays have been increased by \$13 million to reflect additional reporting by the Department of Defense for the months of December 2014, January 2015 and February 2015.

2 Outlays have been increased by \$7 million to reflect additional reporting by the Department of Defense for the months of January 2015 and February 2015.

3 Outlays have been increased by \$7 million to reflect additional reporting by the Department of Defense for the months of December 2014 and February 2015.

4 Includes FICA and SECA tax credits, non-contributory military service credits, special benefits for the aged and credit for the unnegotiated OASI benefit checks.

Note: Details may not add to totals due to rounding.

... No Transactions

(\*\*) Less than absolute value of \$500,000

**Table 6. Means of Financing the Deficit or Disposition of Surplus by the U.S. Government, March 2015 and Other Periods**

Assets and Liabilities Directly Related to Budget Off-Budget Activity	Net Transactions (- denotes net reduction of either liability or asset accounts)			Account Balances Current Fiscal Year		
	This Month	Fiscal Year to Date		Beginning of		Close of This Month
		This Year	Prior Year	This Year	This Month	
<b>Liability Accounts:</b>						
Borrowing from the Public:						
Treasury Securities, Issued Under General Financing Authorities:						
Debt Held by the Public	16,363	305,428	643,040	12,784,971	13,074,036	13,090,399
Intragovernmental Holdings	-20,161	22,557	220,004	5,039,100	5,081,818	5,061,657
Total Treasury Securities Outstanding	-3,798	327,985	863,044	17,824,071	18,155,854	18,152,056
Plus Premium on Treasury Securities	-323	1,261	-1,749	34,211	35,794	35,471
Less Discount on Treasury Securities	608	-910	7,304	90,118	88,599	89,208
Total Treasury Securities Net of Premium and Discount	-4,729	330,156	853,991	17,768,163	18,103,048	18,098,319
Agency Securities, Issued Under Special Financing Authorities (See Schedule B; for Other Agency Borrowing, See Schedule C)						
Total Federal Securities	50	276	-1,086	23,860	24,086	24,136
	-4,679	330,432	852,904	17,792,023	18,127,134	18,122,455
Deduct:						
Federal Securities Held as Investments of Government Accounts (See Schedule D)						
Less Discount on Federal Securities Held as Investments of Government Accounts	-20,104	22,613	224,823	5,039,265	5,081,982	5,061,878
Net Federal Securities Held as Investments of Government Accounts	-110	-555	4,860	26,677	26,232	26,122
	-19,994	23,169	219,962	5,012,588	5,055,750	5,035,757
Total Borrowing from the Public	15,315	307,263	632,942	12,779,436	13,071,384	13,086,699
Accrued Interest Payable to the Public	6,866	570	1,201	53,839	47,544	54,409
Allocations of Special Drawing Rights	-985	-3,641	408	52,358	49,703	48,718
Deposit Funds	99,271	105,975	-115,361	12,155	18,860	118,130
Miscellaneous Liability Accounts (Includes Checks Outstanding Etc.)	-1,827	3,809	3,377	8,166	13,802	11,974
<b>Total Liability Accounts</b>	<b>118,639</b>	<b>413,976</b>	<b>522,566</b>	<b>12,905,954</b>	<b>13,201,292</b>	<b>13,319,931</b>
<b>Asset Accounts (Deduct)</b>						
Cash and Monetary Assets:						
U.S. Treasury Operating Cash:						
Federal Reserve Account <sup>1</sup>	65,155	-58,218	53,803	158,302	34,929	100,084
Balance	65,155	-58,218	53,803	158,302	34,929	100,084
Special Drawing Rights:						
Total Holdings	-1,000	-3,690	428	53,148	50,459	49,459
SDR Certificates Issued to Federal Reserve Banks	.....	.....	.....	-5,200	-5,200	-5,200
Balance	-1,000	-3,690	428	47,948	45,259	44,259
Reserve Position on the U.S. Quota in the IMF:						
U.S. Subscription to International Monetary Fund:						
Direct Quota Payments	.....	(**)	.....	54,424	54,424	54,424
Maintenance of Value Adjustments	-1,175	-4,343	486	8,385	5,218	4,042
Letter of Credit Issued to IMF	-2,195	-3,713	-3,797	-49,658	-51,176	-53,371
Dollar Deposits with the IMF	20	19	7	-161	-161	-142
Receivable/Payable (-) for Interim Maintenance of Value						
Adjustments	921	3,384	-351	1,798	4,261	5,182
Balance	-2,430	-4,653	-3,655	14,789	12,565	10,136
Loans to International Monetary Fund	-765	-3,050	-85	14,212	11,927	11,162
Other Cash and Monetary Assets	-100	-162	-374	25,849	25,788	25,688
Total Cash and Monetary Assets	60,860	-69,772	50,117	261,100	130,468	191,328
Non-Federal Securities of the National Railroad Retirement Investment Trust						
Net Activity, Guaranteed Loan Financing (See Schedule E)	673	-325	1,845	25,678	24,680	25,353
Net Activity, Direct Loan Financing (See Schedule E)	-178	3,991	4,619	1,993	6,163	5,985
Miscellaneous Asset Accounts	3,695	41,156	50,871	1,061,797	1,099,258	1,102,953
	680	-547	839	786	<sup>2</sup> -441	239
<b>Total Asset Accounts</b>	<b>65,729</b>	<b>-25,496</b>	<b>108,292</b>	<b>1,351,353</b>	<b>1,260,128</b>	<b>1,325,857</b>
<b>Excess of Liabilities (+) or Assets (-)</b>	<b>52,910</b>	<b>439,473</b>	<b>414,274</b>	<b>11,554,601</b>	<b>11,941,164</b>	<b>11,994,074</b>
Transactions Not Applied to Current Year's Surplus or Deficit (See Schedule A for Details)	(**)	(**)	-1,008	.....	(**)	(**)
<b>Total Budget and Off-Budget Federal Entities (Financing of Deficit (+) or Disposition of Surplus (-))</b>	<b>52,910</b>	<b>439,473</b>	<b>413,266</b>	<b>11,554,601</b>	<b>11,941,164</b>	<b>11,994,074</b>

1 Major sources of information used to determine Treasury's operating cash balance include Federal Reserve Banks, Treasury Regional Finance Centers, Internal Revenue Service Centers, various electronic systems, and information on the Public Debt. Information is presented on a modified cash basis. Deposits are reflected as received and withdrawals are reflected as processed.

2 Amount has been adjusted by \$26 million to reflect additional reporting by the

Department of Defense and the Department of Transportation for the months of December 2014, January 2015 and February 2015.

Note: Details may not add to totals due to rounding.

... No Transactions

(\*\*) Less than absolute value of \$500,000

**Table 6. Schedule A-Analysis of Change in Excess of Liabilities of the U.S. Government, March 2015 and Other Periods**

Classification	[\$ millions]		
	This Month	Fiscal Year to Date	
		This Year	Prior Year
<b>Excess of Liabilities Beginning of Period:</b>			
Based on Composition of Unified Budget in Preceding Period	11,941,138	11,554,591	11,070,365
Adjustments During Current Fiscal Year for Changes in Composition of Unified Budget:			
Revisions by Federal Agencies to the Prior Budget Results	26	10	42
Excess of Liabilities Beginning of Period (Current Basis)	11,941,164	11,554,601	11,070,408
Budget Surplus (-) or Deficit:			
Based on Composition of Unified Budget in Prior Fiscal Year	52,910	439,473	413,266
Total Surplus (-) or Deficit (Table 2)	52,910	439,473	413,266
Total-On-Budget (Table 2)	56,120	445,888	421,200
Total-Off-Budget (Table 2)	-3,210	-6,415	-7,934
Transactions Not Applied to Current Year's Surplus or Deficit:			
Premium/Discount on Buyback of U.S. Treasury Securities	.....	(**)	.....
Reclassification of Aged Unreconciled Accounts	(**)	(**)	1,008
Total-Transactions Not Applied to Current Year's Surplus or Deficit	(**)	(**)	1,008
<b>Excess of Liabilities Close of Period</b>	<b>11,994,074</b>	<b>11,994,074</b>	<b>11,484,682</b>

Note: Details may not add to totals due to rounding.  
 ... No Transactions

(\*\*) Less than absolute value of \$500,000

**Table 6. Schedule B-Securities Issued by Federal Agencies Under Special Financing Authorities, March 2015 and Other Periods**

Classification	[\$ millions]					
	This Month	Net Transactions (-) denotes net reduction of liability accounts		Account Balances Current Fiscal Year		
		Fiscal Year to Date		Beginning of		Close of
	This Year	Prior Year	This Year	This Month	This Month	
<b>Agency Securities, Issued Under Special Financing Authorities:</b>						
Obligations Guaranteed by the United States, Issued By:						
Department of Housing and Urban Development:						
Federal Housing Administration	.....	.....	.....	19	19	19
Obligations Not Guaranteed by the United States, Issued By:						
Legislative Branch:						
Architect of the Capitol	1	-11	-3	106	93	94
Independent Agencies:						
Federal Communications Commission	.....	.....	.....	(**)	(**)	(**)
National Archives and Records Administration	.....	-10	-9	116	106	106
Tennessee Valley Authority	50	297	-1,074	23,620	23,867	23,917
<b>Total Agency Securities</b>	<b>50</b>	<b>276</b>	<b>-1,086</b>	<b>23,860</b>	<b>24,086</b>	<b>24,136</b>

Note: Details may not add to totals due to rounding.  
 ... No Transactions

(\*\*) Less than absolute value of \$500,000

**Table 6. Schedule C (Memorandum)-Federal Agency Borrowing Financed Through the Issue of Treasury Securities, March 2015 and Other Periods**

Classification	[\$ millions]					
	Transactions			Account Balances Current Fiscal Year		
	This Month	Fiscal Year to Date		Beginning of		Close of This Month
This Year		Prior Year	This Year	This Month		
<b>Borrowing from the US Treasury:</b>						
Department of Agriculture:						
Farm Service Agency:						
Commodity Credit Corporation	176	-3,654	1,289	9,811	5,981	6,156
Agricultural Credit Insurance Fund	234	944	-172	8,257	8,967	9,200
Farm Storage Facility Loans	-56	21	216	994	1,071	1,015
Emergency Boll Weevil Loan Fund	.....	.....	.....	2	2	2
Rural Housing Service:						
Rural Housing Insurance	83	444	353	16,369	16,730	16,813
Rural Community Facility Loans Fund	129	470	304	5,517	5,858	5,987
Multifamily Housing Revitalization Loan Account	4	25	4	240	262	266
Rural Business - Cooperative Service:						
Rural Business and Industry Loans	.....	.....	.....	68	68	68
Rural Development Loan Fund	1	7	5	316	321	323
Rural Economic Development Loan Fund	1	24	23	169	192	193
Renewable Energy Guaranteed Loan Account	.....	.....	.....	(**)	(**)	(**)
Rural Microenterprise Investment Loans	1	3	2	22	24	25
Rural Utilities Service:						
Rural Water and Waste Disposal Fund	63	399	431	12,257	12,593	12,656
Rural Electrification and Telecommunications Fund	54	228	165	12,308	12,483	12,536
Rural Telephone Bank	.....	.....	(**)	293	293	293
Distance Learning and Telemedicine Program	11	69	66	1,345	1,404	1,414
Foreign Agricultural Service	.....	.....	.....	748	748	748
Department of Commerce:						
National Oceanic and Atmospheric Administration:						
Fisheries Finance	.....	73	29	511	584	584
State and Local Implementation Fund	.....	4	.....	22	26	26
National Telecommunications and Information Administration:						
Public Safety Trust Fund	.....	.....	.....	779	779	779
Department of Defense--Military Programs:						
Family Housing Improvement Loans	22	60	83	1,391	1,429	1,451
Department of Education:						
College Housing and Academic Facilities Loans	.....	(**)	(**)	32	32	32
Federal Direct Student Loans	.....	83,086	96,816	855,279	938,365	938,365
Teach Grant Loans	2	43	54	555	596	599
Temporary Student Loan Purchase Authority	.....	-266	-178	66,274	66,007	66,007
Federal Family Education Loans	.....	.....	.....	43,254	43,254	43,254
Department of Energy:						
Bonneville Power Administration Fund	43	370	188	4,242	4,569	4,612
Western Area Power Administration - Recovery Act	5	5	31	92	92	97
Advanced Technology Vehicles Manufacturing Loans	.....	.....	-4	27	27	27
Title 17 Innovative Technology Loans	.....	14	109	91	105	105
Department of Health and Human Services:						
Consumer Operated and Oriented Plan	.....	163	249	857	1,019	1,019
Consumer Operated and Oriented Plan Program Contingency Fund	.....	206	47	37	243	243
Department of Homeland Security:						
National Flood Insurance Fund	.....	-1,000	.....	24,000	23,000	23,000
Disaster Assistance Loan Fund	.....	.....	21	81	81	81
Department of Housing and Urban Development:						
Public and Indian Housing Programs:						
Low-Rent Public Housing - Loans and Other Expenses	.....	.....	.....	116	116	116
Native Hawaiian Housing Loans	.....	.....	.....	6	6	6
Housing Programs:						
Emergency Homeowners' Relief Fund	.....	.....	.....	3	3	3
Federal Housing Administration	.....	10	.....	27,528	27,538	27,538
Green Retrofit Program for Multifamily Housing-Recovery Act	.....	.....	.....	8	8	8
Department of the Interior:						
Helium Fund	.....	.....	-44	.....	.....	.....
Bureau of Indian Affairs and Bureau of Indian Education	.....	(**)	(**)	5	5	5
Bureau of Reclamation Loan Fund	.....	.....	.....	34	34	34
Assistance to American Samoa Loan Fund	.....	.....	1	9	9	9

**Table 6. Schedule C (Memorandum)-Federal Agency Borrowing Financed Through the Issue of Treasury Securities, March 2015 and Other Periods - Continued**

Classification	[\$ millions]					
	Transactions			Account Balances Current Fiscal Year		
	This Month	Fiscal Year to Date		Beginning of		Close of This Month
This Year		Prior Year	This Year	This Month		
<b>Borrowing from the US Treasury: - Continued</b>						
Department of Labor:						
Black Lung Disability Trust Fund	-160	-160	.....	4,733	4,733	4,573
Department of State:						
Repatriation Loans	.....	1	1	4	4	4
Department of Transportation:						
Federal Highway Administration:						
Transportation Infrastructure Finance and Innovation Fund	117	755	833	7,342	7,980	8,097
Federal Railroad Administration:						
Railroad Rehabilitation and Improvement Loan Fund	19	51	36	843	874	893
Other	.....	.....	.....	(**)	(**)	(**)
Department of the Treasury:						
Departmental Offices:						
Community Development Financial Institutions Fund	(**)	10	6	53	63	64
Temporary Credit and Liquidity Program	.....	.....	.....	8,072	8,072	8,072
Troubled Asset Relief Program	.....	-676	-2,704	1,304	629	629
Small Business Lending Financing Fund	.....	.....	.....	3,212	3,212	3,212
Federal Financing Bank Revolving Fund	22	318	-5,892	56,528	56,823	56,846
Department of Veterans Affairs:						
Veterans Housing Benefit Program Fund	-87	359	242	624	1,070	983
Native American Veteran Housing Fund	-1	8	4	67	76	75
Vocational Rehabilitation Loan Fund	(**)	1	1	1	2	2
Corps of Engineers:						
Washington Aqueduct	(**)	(**)	(**)	1	1	1
Environmental Protection Agency:						
Abatement, Control, and Compliance Loan Program	.....	.....	.....	(**)	(**)	(**)
International Assistance Programs:						
International Security Assistance:						
Military Debt Reduction	.....	.....	.....	37	37	37
Agency for International Development:						
International Debt Reduction	.....	.....	.....	478	478	478
Development Credit Authority Loan Fund	.....	.....	.....	3	3	3
Overseas Private Investment Corporation	33	208	201	2,807	2,982	3,015
International Monetary Programs	.....	.....	.....	7,847	7,847	7,847
Small Business Administration:						
Business Loan Fund	91	104	-55	1,706	1,718	1,810
Disaster Loan Fund	.....	148	340	6,051	6,198	6,198
Independent Agencies:						
Export-Import Bank of the United States	578	1,162	2,135	21,634	22,218	22,796
Federal Communications Commission:						
Spectrum Auction Loan Fund	.....	.....	(**)	.....	.....	.....
National Credit Union Administration	.....	.....	-1,825	2,600	2,600	2,600
Presidio Trust	.....	.....	.....	50	50	50
Railroad Retirement Board:						
Social Security Equivalent Benefit Account	321	1,905	1,926	3,532	5,116	5,437
Smithsonian Institution:						
John F. Kennedy Center Parking Facilities	.....	.....	.....	20	20	20
<b>Total Borrowing from the US Treasury</b>	<b>1,706</b>	<b>85,940</b>	<b>95,339</b>	<b>1,223,498</b>	<b>1,307,733</b>	<b>1,309,438</b>
<b>Borrowing from the Federal Financing Bank:</b>						
Department of Agriculture:						
Rural Utilities Service:						
Rural Electrification and Telecommunications Fund	-119	-237	858	42,725	42,606	42,488
Department of Education:						
Historically Black College and University Capital Financing Fund	2	31	53	1,260	1,289	1,291
Department of Energy:						
Advanced Technology Vehicles Manufacturing Loans	-163	-325	-477	5,160	4,998	4,835
Title 17 Innovative Technology Loans	-30	-262	1,777	9,369	9,137	9,107
Department of Health and Human Services:						
Health Maintenance Organization Loan and Loan Guarantee Fund	.....	.....	.....	(**)	(**)	(**)
Department of Housing and Urban Development:						
Housing Programs:						



**Table 6. Schedule C (Memorandum)-Federal Agency Borrowing Financed Through the Issue of Treasury Securities, March 2015 and Other Periods - Continued**

Classification	Transactions			Account Balances Current Fiscal Year		
	This Month	Fiscal Year to Date		Beginning of		Close of This Month
		This Year	Prior Year	This Year	This Month	
<b>Borrowing from the Federal Financing Bank: - Continued</b>						
Federal Housing Administration	(**)	72	.....	.....	72	72
Department of Transportation:						
Federal Railroad Administration:						
Railroad Rehabilitation and Improvement Loan Fund	.....	.....	(**)	.....	.....	.....
Department of the Treasury:						
Departmental Offices:						
Community Development Financial Institutions Fund	10	23	.....	38	51	61
Department of Veterans Affairs:						
Guaranteed Transitional Housing Loans for Homeless Veterans	.....	(**)	(**)	5	5	5
General Services Administration:						
Federal Buildings Fund	.....	.....	-45	.....	.....	.....
International Assistance Programs:						
International Security Assistance:						
Foreign Military Financing Program	.....	.....	-47	.....	.....	.....
Independent Agencies:						
Postal Service	.....	.....	.....	15,000	15,000	15,000
<b>Total Borrowing from the Federal Financing Bank</b>	<b>-299</b>	<b>-699</b>	<b>2,119</b>	<b>73,555</b>	<b>73,156</b>	<b>72,857</b>

Note: Details may not add to totals due to rounding.

Note: This table includes lending by the Federal Financing Bank accomplished by the purchase of agency financial assets, by the acquisition of agency debt securities, and by direct loans on behalf of an agency. The Federal Financing Bank borrows from Treasury and issues its own securities and in turn may loan

these funds to agencies in lieu of agencies borrowing directly through Treasury or issuing their own securities.

... No Transactions

(\*\*) Less than absolute value of \$500,000

**Table 6. Schedule D-Investments of Federal Government Accounts in Federal Securities, March 2015 and Other Periods**

[\$ millions]

Classification	Net Purchases or Sales (-)			Securities Held as Investments Current Fiscal Year		
	This Month	Fiscal Year to Date		Beginning of		Close of This Month
		This Year	Prior Year	This Year	This Month	
<b>Federal Funds:</b>						
Department of Agriculture	.....	39	76	143	182	182
Department of Commerce	-3	.....	.....	.....	3	.....
Department of Defense--Military Programs:						
Defense Cooperation Account	.....	(**)	(**)	8	8	8
Department of Energy	-57	-69	455	55,464	55,452	55,395
Department of Health and Human Services	.....	5	3	2,101	2,106	2,106
Department of Homeland Security	.....	142	.....	.....	142	142
Department of Housing and Urban Development:						
Housing Programs:						
Federal Housing Administration Fund	492	5,629	1,491	6,379	11,516	12,008
Government National Mortgage Association:						
Guarantees of Mortgage-Backed Securities	(**)	(**)	-336	151	151	151
Department of the Interior	-114	659	-338	6,848	7,621	7,507
Department of Labor	-208	1,043	-470	17,490	18,741	18,533
Department of Transportation	10	-44	160	2,180	2,126	2,136
Department of the Treasury	10	29	116	25,317	25,336	25,346
Department of Veterans Affairs:						
Veterans Reopened Insurance Fund	-4	-13	-12	199	190	186
Servicemen'S Group Life Insurance Fund	.....	(**)	(**)	1	1	1
Other Defense Civil Programs:						
Uniformed Services Retiree Health Care Fund	-1,676	3,633	9,882	200,372	205,681	204,005
Office of Personnel Management:						
Postal Service Contributions	.....	765	5,375	48,468	49,233	49,233
Independent Agencies:						
Federal Deposit Insurance Corporation:						
Deposit Insurance Fund	1,215	4,476	6,559	48,750	52,011	53,226
FSLIC Resolution Fund	(**)	(**)	1	827	827	827
Federal Housing Finance Agency	-23	-4	(**)	64	83	60
National Credit Union Administration	45	422	387	11,555	11,932	11,977
Postal Service	129	1,212	1,366	5,450	6,533	6,662
Tennessee Valley Authority	(**)	(**)	(**)	25	25	25
Other	79	340	490	17,190	17,450	17,530
Other	-90	-1,161	1,900	13,550	12,479	12,389
Total Treasury Securities	-192	17,104	27,105	462,532	479,828	479,635
<b>Total Federal Funds</b>	<b>-192</b>	<b>17,104</b>	<b>27,105</b>	<b>462,532</b>	<b>479,828</b>	<b>479,635</b>
<b>Trust Funds:</b>						
Legislative Branch:						
Library of Congress	(**)	-4	4	29	25	25
United States Tax Court	.....	(**)	(**)	11	11	11
Other	(**)	2	1	30	32	32
Judicial Branch:						
Judicial Retirement Funds	-9	52	95	1,084	1,145	1,136
Department of Agriculture	.....	.....	31	6	6	6
Department of Defense--Military Programs:						
Voluntary Separation Incentive Fund	-6	15	-8	222	242	237
Other	-10	-7	-33	875	878	868
Department of Health and Human Services:						
Federal Hospital Insurance Trust Fund	3,711	-12,448	-6,295	202,207	186,048	189,760
Federal Supplementary Medical Insurance Trust Fund	9,054	2,432	10,967	68,391	61,768	70,823
Other	8	52	82	3,385	3,429	3,438
Department of Homeland Security	19	421	317	5,589	5,991	6,011
Department of the Interior	1	(**)	(**)	9	8	9
Department of Labor:						
Unemployment Trust Fund	-2,976	-1,670	-2,509	35,919	37,224	34,249
Other	-2	(**)	-1	63	65	63
Department of State:						
Foreign Service Retirement and Disability Fund	-47	73	122	17,792	17,912	17,865
Other	(**)	-4	(**)	43	40	40
Department of Transportation:						
Airport and Airway Trust Fund	80	802	374	12,759	13,481	13,561
Highway Trust Fund	139	-1,474	7,928	10,696	9,083	9,222
Department of the Treasury	396	617	326	1,644	1,865	2,260

**Table 6. Schedule D-Investments of Federal Government Accounts in Federal Securities, March 2015 and Other Periods - Continued**  
 [\$ millions]

Classification	Net Purchases or Sales (-)			Securities Held as Investments Current Fiscal Year		
	This Month	Fiscal Year to Date		Beginning of		Close of This Month
		This Year	Prior Year	This Year	This Month	
<b>Trust Funds - Continued</b>						
Department of Veterans Affairs:						
General Post Fund, National Homes	15	30	9	65	79	95
National Service Life Insurance	-90	-364	-311	5,629	5,355	5,265
United States Government Life Insurance Fund	(**)	-1	-1	7	7	7
Veterans Special Life Insurance Fund	-17	-37	-23	1,863	1,843	1,826
Corps of Engineers	134	710	828	8,439	9,015	9,149
Other Defense Civil Programs:						
Military Retirement Fund	-961	49,337	64,570	483,111	533,409	532,448
Other	-37	-143	-146	1,624	1,519	1,481
Environmental Protection Agency	-26	765	774	3,887	4,678	4,652
National Aeronautics and Space Administration	(**)	(**)	(**)	16	16	16
Office of Personnel Management:						
Civil Service Retirement and Disability Fund	-32,510	-39,014	113,387	857,169	850,664	818,154
Employees Life Insurance Fund	26	239	459	43,213	43,425	43,452
Employees and Retired Employees Health Benefits Fund	300	-219	125	23,558	23,039	23,339
Social Security Administration:						
Federal Old-Age and Survivors Insurance Trust Fund	3,926	20,809	23,025	2,712,805	2,729,687	2,733,614
Federal Disability Insurance Trust Fund	-1,064	-15,712	-16,512	70,113	55,465	54,401
Independent Agencies:						
Harry S Truman Scholarship Foundation	-5	-6	-5	54	54	49
Japan-United States Friendship Commission	.....	.....	.....	38	38	38
Railroad Retirement Board:						
Treasury Securities	69	13	30	2,670	2,614	2,683
Agency Securities	.....	1	.....	3	5	5
Other	-31	244	108	1,713	1,988	1,957
Total Treasury Securities	-19,912	5,509	197,718	4,576,730	4,602,150	4,582,238
Total Agency Securities	.....	1	.....	3	5	5
<b>Total Trust Funds</b>	<b>-19,912</b>	<b>5,510</b>	<b>197,718</b>	<b>4,576,733</b>	<b>4,602,155</b>	<b>4,582,243</b>
<b>Grand Total</b>	<b>-20,104</b>	<b>22,613</b>	<b>224,823</b>	<b>5,039,265</b>	<b>5,081,982</b>	<b>5,061,878</b>

Note: Details may not add to totals due to rounding.

Note: Investments are in Treasury securities unless otherwise noted.

... No Transactions

(\*\*) Less than absolute value of \$500,000

**Table 6. Schedule E-Net Activity, Guaranteed and Direct Loan Financing, March 2015 and Other Periods**

[\$ millions]

Classification	Net Transactions (-) denotes net reduction of asset accounts			Account Balances Current Fiscal Year		
	This Month	Fiscal Year to Date		Beginning of		Close of This Month
		This Year	Prior Year	This Year	This Month	
<b>Guaranteed Loan Financing Activity:</b>						
Department of Agriculture:						
Farm Service Agency:						
Commodity Credit Corporation Export Fund	-1	-17	-22	239	223	222
Agricultural Credit Insurance Fund	-2	-8	2	-177	-183	-185
Natural Resources Conservation Service:						
Agricultural Resource Conservation Demonstration Program	.....	.....	.....	(**)	(**)	(**)
Rural Housing Service:						
Rural Community Facility Loans	-1	3	-1	-57	-54	-54
Rural Housing Insurance Fund	40	108	-12	-3,667	-3,599	-3,559
Rural Business - Cooperative Service:						
Rural Business and Industry Loans	1	-30	-26	-488	-519	-518
Renewable Energy Guaranteed Loan Account	(**)	-9	-6	-22	-30	-31
Biorefinery Assistance Loan Account	(**)	(**)	(**)	-22	-22	-22
Rural Utilities Service:						
Rural Water and Waste Disposal Fund	.....	(**)	(**)	-25	-25	-25
Department of Commerce:						
General Administration:						
Emergency Oil, Gas, and Steel Account	.....	.....	.....	5	5	5
Department of Defense--Military Programs	.....	(**)	.....	-59	-59	-59
Department of Education:						
Office of Student Financial Assistance:						
Federal Family Education Loans	-757	-2,968	2,267	38,015	35,803	35,046
Department of Energy:						
Title 17 Innovative Technology Loans	20	7	-30	-229	-242	-222
Department of Health and Human Services:						
Health Resources and Services Administration:						
Health Center Loans	.....	.....	(**)	-3	-3	-3
Health Education Assistance Loans	.....	.....	-2	-70	-70	-70
Department of Housing and Urban Development:						
Public and Indian Housing Programs:						
Indian Housing Loans	(**)	(**)	1	-155	-155	-155
Native Hawaiian Housing Loans	-2	-2	(**)	3	3	1
Community Planning and Development:						
Community Development Loans	.....	.....	4	-109	-109	-109
Housing Programs:						
FHA-Mutual Mortgage Insurance Loans	665	5,413	4,711	-15,830	-11,082	-10,417
FHA-General and Special Risk Fund	300	1,458	946	-4,512	-3,354	-3,054
Home Ownership Preservation Entity Fund	(**)	2	(**)	-18	-16	-16
Government National Mortgage Association:						
Guarantees of Mortgage-Backed Securities	-85	-533	-1,268	3,400	2,952	2,867
Department of the Interior:						
Bureau of Indian Affairs and Bureau of Indian Education	-2	(**)	-1	-59	-57	-59
Department of Transportation:						
Office of the Secretary:						
Minority Business Resource Center Fund	.....	(**)	(**)	-1	(**)	(**)
Federal Highway Administration:						
Transportation Infrastructure Finance and Innovation Fund	.....	.....	.....	(**)	(**)	(**)
Maritime Administration:						
Maritime Guaranteed Loan (Title XI) Fund	(**)	(**)	-10	-231	-231	-231
Department of the Treasury:						
Departmental Offices:						
Air Transportation Stabilization Fund	.....	.....	.....	(**)	(**)	(**)
Troubled Assets Insurance Financing Fund	.....	.....	.....	(**)	(**)	(**)
Troubled Asset Relief Program	4	4	2	-13	-13	-9
Department of Veterans Affairs:						
Veterans Benefits Administration:						
Veterans Housing Benefit Program Fund	-271	-538	-1,999	-7,735	-8,002	-8,272
International Assistance Programs:						
Agency for International Development:						

**Table 6. Schedule E-Net Activity, Guaranteed and Direct Loan Financing, March 2015 and Other Periods - Continued**

Classification	Net Transactions (-) denotes net reduction of asset accounts			Account Balances Current Fiscal Year		
	This Month	Fiscal Year to Date		Beginning of		Close of This Month
		This Year	Prior Year	This Year	This Month	
<b>Guaranteed Loan Financing Activity: - Continued</b>						
Ukraine Export Credit Insurance Fund	.....	.....	.....	-196	-196	-196
Loan Guarantees to Israel	.....	.....	.....	-1,226	-1,226	-1,226
Urban and Environmental Credit Guaranteed Loans	(**)	1	1	-56	-55	-55
Microenterprise and Small Enterprise Development	.....	.....	.....	(**)	(**)	(**)
Development Credit Authority Loan Fund	(**)	-2	-4	-72	-75	-75
Loan Guarantees to Egypt	.....	.....	.....	-481	-481	-481
Tunisia Loan Fund	.....	.....	-122	-253	-253	-253
Overseas Private Investment Corporation	-1	-30	-22	149	119	118
Small Business Administration:						
Business Loan Fund	-111	1,048	415	-2,224	-1,066	-1,177
Independent Agencies:						
Export-Import Bank of the United States	22	85	-204	-1,828	-1,765	-1,743
<b>Net Activity, Guaranteed Loan Financing</b>	<b>-178</b>	<b>3,991</b>	<b>4,619</b>	<b>1,993</b>	<b>6,163</b>	<b>5,985</b>
<b>Direct Loan Financing Activity:</b>						
Department of Agriculture:						
Farm Service Agency:						
Agricultural Credit Insurance Fund	97	-97	-273	7,452	7,259	7,355
Farm Storage Facility Loans	6	4	32	776	774	780
Apple Loans Fund	.....	(**)	(**)	(**)	(**)	(**)
Emergency Boll Weevil Loan Fund	.....	.....	.....	1	1	1
Rural Housing Service:						
Rural Community Facility Loans Fund	57	195	63	4,957	5,095	5,152
Rural Housing Insurance Fund	-69	-257	-300	15,265	15,076	15,007
Multifamily Housing Revitalization Loan Account	1	11	1	211	220	221
Rural Business - Cooperative Service:						
Rural Business and Industry Loan Fund	(**)	-1	-1	42	41	41
Rural Development Loan Fund	-2	-11	-11	293	283	282
Rural Economic Development Loan Fund	-3	10	12	145	158	155
Rural Microenterprise Investment Loans	(**)	2	2	20	22	22
Rural Utilities Service:						
Rural Water and Waste Disposal Loans	-61	-170	-37	10,812	10,704	10,643
Rural Electrification and Telecommunications Fund	-268	-1,051	600	50,269	49,486	49,218
Rural Telephone Bank	-4	-22	-27	248	230	226
Distance Learning and Telemedicine Program	-2	-11	16	1,053	1,044	1,042
Rural Development Insurance Fund	.....	.....	.....	1,065	1,065	1,065
Foreign Agricultural Service:						
P.L. 480 Direct Loan Fund	-4	-67	-72	657	594	590
International Debt Reduction	(**)	-3	-4	-5	-8	-8
Department of Commerce:						
National Oceanic and Atmospheric Administration:						
Fisheries Finance	-14	31	-6	511	556	542
Department of Defense--Military Programs	13	29	55	1,391	1,407	1,419
Department of Education:						
Office of Postsecondary Education:						
College Housing and Academic Facilities Loans	.....	(**)	-1	4	4	4
Historically Black College and University Capital Financing Fund	2	33	53	1,062	1,094	1,096
Office of Student Financial Assistance:						
Federal Direct Student Loans	3,372	49,617	58,313	797,552	843,796	847,168
Teach Grant Loans	4	32	39	535	563	567
Temporary Student Loan Purchase Authority	-1,104	-6,007	-5,066	101,225	96,322	95,218
Department of Energy:						
Advanced Technology Vehicles Manufacturing Loans	-172	-335	-310	5,029	4,867	4,695
Title 17 Innovative Technology Loans	18	-107	1,816	8,306	8,181	8,199
Department of Health and Human Services:						
Consumer Operated and Oriented Plan	(**)	131	209	758	889	889
Consumer Operated and Oriented Plan Program Contingency Fund	1	113	19	31	143	144
Department of Homeland Security:						
Disaster Assistance Loan Fund	(**)	(**)	1	8	8	8
Department of Housing and Urban Development:						

**Table 6. Schedule E-Net Activity, Guaranteed and Direct Loan Financing, March 2015 and Other Periods - Continued**

Classification	Net Transactions (-) denotes net reduction of asset accounts			Account Balances Current Fiscal Year		
	This Month	Fiscal Year to Date		Beginning of		Close of This Month
		This Year	Prior Year	This Year	This Month	
<b>Direct Loan Financing Activity: - Continued</b>						
Housing Programs:						
Emergency Homeowners' Relief Fund	(**)	(**)	-1	1	1	1
FHA-Mutual Mortgage Insurance Loans	.....	.....	(**)	-6	-6	-6
FHA-General and Special Risk Fund	(**)	79	.....	(**)	79	79
Green Retrofit Program for Multifamily Housing Fund	(**)	-3	-2	5	2	2
Department of the Interior:						
Bureau of Reclamation	.....	.....	.....	35	35	35
Bureau of Indian Affairs and Bureau of Indian Education	(**)	(**)	-1	3	3	3
Assistance to American Samoa Loan Fund	.....	.....	.....	9	9	9
Department of State:						
Administration of Foreign Affairs:						
Repatriation Loans	(**)	-1	-1	1	(**)	(**)
Department of Transportation:						
Federal Highway Administration:						
Transportation Infrastructure Finance and Innovation Fund	117	-441	689	6,769	6,212	6,329
Tiger Tifia Loan Fund	.....	8	10	569	577	577
Federal Railroad Administration:						
Railroad Rehabilitation and Improvement Loan Fund	7	22	-6	834	849	856
Department of the Treasury:						
Departmental Offices:						
Community Development Financial Institutions Fund	10	29	5	91	111	121
GSE Mortgage-Backed Securities Purchase Program	.....	.....	.....	4,613	4,613	4,613
Temporary Credit and Liquidity Program	-36	-453	-529	7,905	7,489	7,453
Troubled Asset Relief Program	1,489	-150	-5,097	696	-943	546
Small Business Lending Program	-43	-365	-302	3,174	2,853	2,809
Bureau of the Fiscal Service:						
Financial Management Service	.....	.....	.....	(**)	(**)	(**)
Department of Veterans Affairs:						
Veterans Benefits Administration:						
Veterans Housing Benefit Program Fund	17	-10	-24	531	504	521
Native American Veteran Housing Fund	-1	-1	(**)	64	63	62
Transitional Housing Loans	(**)	(**)	(**)	(**)	(**)	(**)
Vocational Rehabilitation Loan Fund	(**)	(**)	(**)	1	1	1
Environmental Protection Agency:						
Abatement, Control, and Compliance Loan Program	.....	(**)	(**)	(**)	(**)	(**)
International Assistance Programs:						
International Security Assistance:						
Foreign Military Loan Program	.....	.....	.....	-27	-27	-27
Military Debt Reduction	.....	.....	.....	37	37	37
Agency for International Development:						
International Debt Reduction	(**)	-23	-12	93	70	70
Overseas Private Investment Corporation	12	46	27	1,391	1,425	1,437
International Monetary Programs	.....	-1	-3	-69	-71	-71
Small Business Administration:						
Business Loan Fund	-1	7	18	148	156	155
Disaster Loan Fund	-72	-282	-208	5,572	5,362	5,290
Independent Agencies:						
Export-Import Bank of the United States	327	624	1,181	19,689	19,985	20,313
Federal Communications Commission:						
Spectrum Auction Loan Fund	(**)	(**)	3	-3	-3	-3
<b>Net Activity, Direct Loan Financing</b>	<b>3,695</b>	<b>41,156</b>	<b>50,871</b>	<b>1,061,797</b>	<b>1,099,258</b>	<b>1,102,953</b>

Note: Details may not add to totals due to rounding.  
 Note: Federal credit programs provide benefits to the public in the form of direct loans and loan guarantees. This table reflects cash transactions and balances of the nonbudgetary financing fund accounts that result from the disbursement of loans, collection of fees, repayment of principle, sale of collateral, interest, and subsidy received from the credit program accounts at

net present value in accordance with the Credit Reform Act of 1990. Unreimbursed costs such as administrative expenses and subsidy payments are reported on a cash basis and included within each program's budgetary totals in Table 5.  
 ... No Transactions  
 (\*\*) Less than absolute value of \$500,000

**Table 7. Receipts and Outlays of the U.S. Government by Month, Fiscal Year 2015**

Classification	[\$ millions]												Fiscal Year to Date	Comparable Period Prior F.Y.	
	Oct.	Nov.	Dec.	Jan.	Feb.	March	April	May	June	July	Aug.	Sept.			
<b>Receipts:</b>															
Individual Income Taxes	106,661	85,958	145,029	177,199	40,614	85,973								641,434	584,914
Corporation Income Taxes	10,228	2,582	84,231	7,459	-2,866	30,481								132,114	117,555
Social Insurance and Retirement Receipts:															
Employment and General Retirement	70,394	75,868	74,623	94,995	77,210	96,797								489,887	470,537
Unemployment Insurance	3,187	3,214	770	2,519	6,831	454								16,975	18,066
Other Retirement	293	279	285	338	281	328								1,804	1,732
Excise Taxes	5,915	7,270	6,567	6,689	6,412	6,559								39,412	38,361
Estate and Gift Taxes	1,418	1,508	1,990	1,344	1,008	1,642								8,911	8,748
Customs Duties	3,485	2,964	2,791	3,023	2,525	2,627								17,416	16,806
Miscellaneous Receipts	11,136	11,794	19,040	13,176	7,374	9,327								71,847	65,895
<b>Total--Receipts This Year</b>	<b>212,719</b>	<b>191,436</b>	<b>335,327</b>	<b>306,742</b>	<b>139,388</b>	<b>234,187</b>								<b>1,419,800</b>	.....
<b>(On-Budget)</b>	<b>160,464</b>	<b>135,169</b>	<b>280,293</b>	<b>233,755</b>	<b>79,456</b>	<b>158,782</b>								<b>1,047,920</b>	.....
<b>(Off-Budget)</b>	<b>52,255</b>	<b>56,267</b>	<b>55,034</b>	<b>72,987</b>	<b>59,932</b>	<b>75,405</b>								<b>371,880</b>	.....
<i>Total--Receipts Prior Year</i>	<i>198,927</i>	<i>182,453</i>	<i>285,041</i>	<i>295,997</i>	<i>144,349</i>	<i>215,846</i>								.....	<i>1,322,613</i>
<i>(On-Budget)</i>	<i>148,871</i>	<i>128,657</i>	<i>230,051</i>	<i>226,228</i>	<i>86,974</i>	<i>145,924</i>								.....	<i>966,705</i>
<i>(Off-Budget)</i>	<i>50,056</i>	<i>53,796</i>	<i>54,990</i>	<i>69,769</i>	<i>57,375</i>	<i>69,922</i>								.....	<i>355,908</i>
<b>Outlays:</b>															
Legislative Branch	377	336	376	365	305	421								2,181	2,065
Judicial Branch	574	499	629	662	560	610								3,534	3,420
Department of Agriculture:															
Commodity Credit Corporation	3,658	2,161	1,639	817	-217	-54								8,004	9,601
Foreign Agricultural Service	263	46	49	48	154	96								657	599
Other	12,264	11,621	12,591	11,477	10,949	11,772								70,674	69,909
Department of Commerce	590	752	697	735	680	954								4,409	3,852
Department of Defense--Military Programs:															
Military Personnel	29,402	5,971	15,581	9,933	11,147	6,188								78,222	80,590
Operation and Maintenance	19,800	17,623	20,855	20,520	19,375	21,537								119,710	117,958
International Reconstruction and Other Assistance															
	(**)	.....	.....	(**)	.....	.....								(**)	1
Procurement	7,148	6,878	13,895	5,857	7,142	10,937								51,858	56,372
Research, Development, Test, and Evaluation	4,321	4,528	6,054	4,646	4,444	7,431								31,425	31,204
Military Construction	705	706	892	587	558	697								4,144	4,794
Family Housing	89	83	106	100	80	91								549	311
Revolving and Management Funds	52	-419	319	311	-78	-401								-218	3,288
Other	-610	460	-484	-306	-150	51								-1,038	-308
<b>Total Department of Defense--Military Programs</b>	<b>60,908</b>	<b>35,829</b>	<b>57,218</b>	<b>41,648</b>	<b>42,517</b>	<b>46,532</b>								<b>284,652</b>	<b>294,210</b>
Department of Education	5,241	4,781	5,504	4,296	8,712	6,925								35,459	25,661
Department of Energy	2,460	1,863	2,259	1,874	1,719	2,208								12,382	11,809
Department of Health and Human Services:															
National Institutes of Health	2,372	2,275	2,498	2,286	2,357	2,395								14,182	14,484
Centers for Medicare and Medicaid Services:															
Grants to States for Medicaid	28,024	24,710	31,494	29,023	27,010	31,756								172,017	140,337
Federal Hospital Insurance Trust Fund	28,507	14,889	23,729	30,792	23,458	17,429								138,804	131,245
Federal Supplementary Medical Insurance Trust Fund	46,802	14,189	28,841	40,329	26,032	15,361								171,554	155,188
Other	31,015	17,213	23,260	29,129	20,207	18,891								139,714	136,471
Administration for Children and Families	3,794	3,662	4,488	4,250	3,843	4,641								24,678	24,197
Other	-34,057	-20,620	-25,707	-32,149	-24,028	-22,106								-158,667	-152,716
Department of Homeland Security	3,965	3,036	4,753	3,178	2,770	4,270								21,973	21,506
Department of Housing and Urban Development	2,840	3,022	2,943	2,744	3,452	3,286								18,287	22,172
Department of the Interior	614	956	944	866	1,232	1,289								5,902	5,149
Department of Justice	-6,301	2,665	8,825	819	3,575	3,020								12,604	14,394
Department of Labor:															
Unemployment Trust Fund	2,972	1,882	4,000	3,563	3,377	3,682								19,478	27,509
Other	-2,997	1,413	1,265	1,483	1,139	508								2,811	4,701
Department of State	1,933	2,410	2,601	1,742	1,702	2,339								12,727	12,542
Department of Transportation:															
Highway Trust Fund	4,291	3,106	3,089	2,254	2,375	2,460								17,575	18,499
Other	2,436	2,640	2,765	2,309	2,462	3,257								15,868	16,069
Department of the Treasury:															
Interest on Treasury Debt Securities (Gross)	8,702	23,427	86,460	15,105	13,153	13,889								160,736	192,872

**Table 7. Receipts and Outlays of the U.S. Government by Month, Fiscal Year 2015 - Continued**

Classification	[\$ millions]												Fiscal Year to Date	Comparable Period Prior F.Y.		
	Oct.	Nov.	Dec.	Jan.	Feb.	March	April	May	June	July	Aug.	Sept.				
Outlays: - Continued																
Other	4,563	3,566	-3,429	13,092	48,729	18,697									85,218	25,309
Department of Veterans Affairs:																
Compensation and Pensions	11,395	570	11,510	6,130	6,201	984									36,790	34,328
National Service Life	82	56	88	74	75	89									464	450
Other	7,314	5,292	7,249	8,017	6,697	6,682									41,250	39,364
Corps of Engineers	682	367	684	513	520	574									3,339	3,241
Other Defense Civil Programs	11,057	761	10,213	6,164	5,752	2,142									36,089	31,152
Environmental Protection Agency	835	829	853	803	-650	609									3,277	4,184
Executive Office of the President	27	29	33	40	30	35									195	180
General Services Administration	-19	-218	3	-223	-144	133									-467	-314
International Assistance Programs:																
International Security Assistance	722	1,525	1,156	2,769	519	1,228									7,920	7,216
Multilateral Assistance	437	182	65	-7	1,958	344									2,979	452
Agency for International Development	813	415	491	353	409	574									3,056	2,672
Other	106	75	607	516	-238	310									1,377	-251
National Aeronautics and Space Administration	1,415	1,330	2,329	1,276	1,208	1,543									9,101	8,470
National Science Foundation	477	474	503	483	495	538									2,971	3,130
Office of Personnel Management	8,202	7,066	7,358	7,280	8,317	7,462									45,685	43,691
Small Business Administration	58	65	69	64	-1,550	85									-1,208	-283
Social Security Administration:																
Federal Old-Age and Survivors Insurance Trust																
Fund (Off-Budget)	59,677	59,724	60,513	61,187	61,344	61,653									364,098	346,396
Federal Disability Insurance Trust Fund (Off-Budget)	11,988	11,959	11,921	12,265	12,012	12,238									72,382	71,570
Other	8,977	178	9,186	4,679	4,651	401									28,071	27,371
Independent Agencies:																
Deposit Insurance Fund	-166	191	-1,998	263	-1,530	-1,209									-4,449	-6,439
FSLIC Resolution Fund	(**)	(**)	(**)	(**)	(**)	(**)									1	-1
Postal Service:																
Off-Budget:																
Public Enterprise Funds	-20	-487	-1,739	1,031	10	-191									-1,396	-1,552
Other	50	(**)	.....	208	(**)	.....									259	256
Other	71	.....	.....	.....	29	.....									100	78
Tennessee Valley Authority	176	21	294	-165	-180	19									165	-1,185
Other	3,369	2,254	2,117	2,958	3,285	972									14,955	11,246
Undistributed Offsetting Receipts:																
Employer Share, Employee Retirement	-18,819	-5,325	-5,376	-5,306	-5,963	-5,950									-46,739	-46,304
Interest Received by Trust Funds	10,288	-1,472	-67,500	242	531	1,778									-56,134	-71,092
Rents and Royalties on the Outer Continental Shelf Lands	-574	63	-946	-64	-275	-475									-2,271	-3,198
Other	(**)	(**)	(**)	.....	.....	.....									(**)	(**)
<b>Totals This Year:</b>																
<b>Total Outlays</b>	<b>334,432</b>	<b>248,254</b>	<b>333,463</b>	<b>324,289</b>	<b>331,738</b>	<b>287,097</b>									<b>1,859,273</b>	<b>.....</b>
<b>(On-Budget)</b>	<b>271,514</b>	<b>178,516</b>	<b>311,588</b>	<b>257,510</b>	<b>259,778</b>	<b>214,902</b>									<b>1,493,808</b>	<b>.....</b>
<b>(Off-Budget)</b>	<b>62,918</b>	<b>69,738</b>	<b>21,875</b>	<b>66,779</b>	<b>71,960</b>	<b>72,195</b>									<b>365,465</b>	<b>.....</b>
<b>Total-Surplus (+) or Deficit (-)</b>	<b>-121,713</b>	<b>-56,818</b>	<b>1,864</b>	<b>-17,546</b>	<b>-192,350</b>	<b>-52,910</b>									<b>-439,473</b>	<b>.....</b>
<b>(On-Budget)</b>	<b>-111,050</b>	<b>-43,347</b>	<b>-31,295</b>	<b>-23,755</b>	<b>-180,321</b>	<b>-56,120</b>									<b>-445,888</b>	<b>.....</b>
<b>(Off-Budget)</b>	<b>-10,663</b>	<b>-13,471</b>	<b>33,159</b>	<b>6,208</b>	<b>-12,028</b>	<b>3,210</b>									<b>6,415</b>	<b>.....</b>
<b>Total Borrowing from the Public</b>	<b>74,090</b>	<b>64,849</b>	<b>101,554</b>	<b>-36,839</b>	<b>88,293</b>	<b>15,315</b>									<b>307,263</b>	<b>632,942</b>
<b>Total-Outlays Prior Year</b>	<b>289,511</b>	<b>317,679</b>	<b>231,821</b>	<b>306,247</b>	<b>337,880</b>	<b>252,741</b>									<b>.....</b>	<b>1,735,879</b>
<b>(On-Budget)</b>	<b>225,419</b>	<b>250,867</b>	<b>214,255</b>	<b>244,403</b>	<b>269,430</b>	<b>183,532</b>									<b>.....</b>	<b>1,387,905</b>
<b>(Off-Budget)</b>	<b>64,093</b>	<b>66,813</b>	<b>17,566</b>	<b>61,844</b>	<b>68,450</b>	<b>69,208</b>									<b>.....</b>	<b>347,974</b>
<b>Total-Surplus (+) or Deficit (-) Prior Year</b>	<b>-90,584</b>	<b>-135,226</b>	<b>53,220</b>	<b>-10,250</b>	<b>-193,532</b>	<b>-36,895</b>									<b>.....</b>	<b>-413,266</b>
<b>(On-Budget)</b>	<b>-76,547</b>	<b>-122,210</b>	<b>15,796</b>	<b>-18,174</b>	<b>-182,457</b>	<b>-37,608</b>									<b>.....</b>	<b>-421,200</b>
<b>(Off-Budget)</b>	<b>-14,037</b>	<b>-13,017</b>	<b>37,424</b>	<b>7,925</b>	<b>-11,075</b>	<b>713</b>									<b>.....</b>	<b>7,934</b>

Note: Details may not add to totals due to rounding.  
 ... No Transactions

(\*\*) Less than absolute value of \$500,000



**Table 8. Trust Fund Impact on Budget Results and Investment Holdings as of March 31, 2015**

[\$ millions]

Classification	This Month			Fiscal Year to Date			Securities Held as Investments Current Fiscal Year		
	Receipts	Outlays	Excess	Receipts	Outlays	Excess	Beginning of		Close of
							This Year	This Month	
<b>Trust Receipts, Outlays, and Investments Held:</b>									
Airport and Airway	1,136	1,007	129	6,413	6,272	140	12,759	13,481	13,561
Black Lung Disability	48	60	-12	264	149	115	.....	.....	.....
Federal Disability Insurance	11,188	12,238	-1,050	56,800	72,382	-15,582	70,113	55,465	54,401
Federal Employees Life and Health	.....	-320	320	.....	-39	39	66,771	66,464	66,791
Federal Employees Retirement	2,958	6,887	-3,929	30,896	41,160	-10,264	876,056	869,732	837,167
Federal Hospital Insurance	21,885	17,563	4,322	127,373	139,572	-12,200	202,207	186,048	189,760
Federal Old-Age and Survivors Insurance	65,722	61,653	4,069	384,958	364,098	20,860	2,712,805	2,729,687	2,733,614
Federal Supplementary Medical Insurance	24,073	15,361	8,712	170,301	171,554	-1,254	68,391	61,768	70,823
Hazardous Substance Superfund	12	54	-43	1,216	-672	1,888	3,446	4,201	4,167
Highways	3,099	3,466	-367	18,120	22,161	-4,041	10,696	9,083	9,222
Military Advances	2,453	2,408	45	12,876	12,813	63	.....	.....	.....
Military Retirement	-497	399	-897	77,877	28,228	49,648	483,111	533,409	532,448
Railroad Retirement	1,629	1,180	449	4,571	6,764	-2,193	2,673	2,618	2,687
Unemployment	594	3,690	-3,096	17,852	19,524	-1,672	35,919	37,224	34,249
Veterans Life Insurance	15	121	-106	164	540	-376	7,500	7,205	7,098
All Other Trust	546	-126	672	3,928	1,365	2,564	24,285	25,767	26,258
<b>Total Trust Fund Receipts and Outlays and Investments Held from Table 6-D</b>	<b>134,860</b>	<b>125,643</b>	<b>9,218</b>	<b>913,608</b>	<b>885,872</b>	<b>27,736</b>	<b>4,576,733</b>	<b>4,602,155</b>	<b>4,582,243</b>
Less: Interfund Transactions	32,535	32,535	.....	377,784	377,784	.....	.....	.....	.....
Trust Fund Receipts and Outlays on the Basis of Tables 4 & 5	102,325	93,107	9,218	535,824	508,088	27,736			
<b>Total Federal Fund Receipts and Outlays</b>	<b>131,971</b>	<b>194,099</b>	<b>-62,128</b>	<b>884,382</b>	<b>1,351,591</b>	<b>-467,209</b>			
Less: Interfund Transactions	108	108	.....	407	407	.....			
Federal Fund Receipts and Outlays on the Basis of Table 4 & 5	131,863	193,990	-62,128	883,976	1,351,184	-467,209			
<b>Net Budget Receipts &amp; Outlays</b>	<b>234,187</b>	<b>287,097</b>	<b>-52,910</b>	<b>1,419,800</b>	<b>1,859,273</b>	<b>-439,473</b>			

Note: Details may not add to totals due to rounding.

Note: Interfund receipts and outlays are transactions between Federal funds and trust funds such as Federal payments and contributions, and interest and profits on investments in Federal securities. They have no net effect on overall budget

receipts and outlays since the receipt side of such transactions is offset against budget outlays. In this table, Interfund receipts are shown as an adjustment to arrive at total receipts and outlays of trust funds respectively.  
... No Transactions

**Table 9. Summary of Receipts by Source, and Outlays by Function of the U.S. Government, March 2015 and Other Periods**

[\$ millions]			
Classification	This Month	Fiscal Year to Date	Comparable Period Prior Fiscal Year
<b>Receipts</b>			
Individual Income Taxes	85,973	641,434	584,914
Corporation Income Taxes	30,481	132,114	117,555
Social Insurance and Retirement Receipts:			
Employment and General Retirement	96,797	489,887	470,537
Unemployment Insurance	454	16,975	18,066
Other Retirement	328	1,804	1,732
Excise Taxes	6,559	39,412	38,361
Estate and Gift Taxes	1,642	8,911	8,748
Customs Duties	2,627	17,416	16,806
Miscellaneous Receipts	9,327	71,847	65,895
<b>Total</b>	<b>234,187</b>	<b>1,419,800</b>	<b>1,322,613</b>
<b>Net Outlays</b>			
National Defense	49,221	298,675	307,781
International Affairs	4,772	28,453	22,771
General Science, Space, and Technology	2,419	14,190	13,838
Energy	732	3,515	1,626
Natural Resources and Environment	3,257	16,172	16,997
Agriculture	1,242	19,022	21,913
Commerce and Housing Credit	-6,961	-18,651	-71,158
Transportation	6,944	40,852	42,548
Community and Regional Development	2,035	11,535	10,735
Education, Training, Employment, and Social Services	9,963	51,704	41,809
Health	42,536	232,556	191,028
Medicare	25,577	268,535	245,389
Income Security	47,119	287,027	294,074
Social Security	73,881	436,477	417,969
Veterans Benefits and Services	7,709	78,719	74,847
Administration of Justice	5,720	26,702	25,733
General Government	1,624	5,970	9,754
Net Interest	15,733	106,829	117,725
Undistributed Offsetting Receipts	-6,425	-49,010	-49,501
<b>Total</b>	<b>287,097</b>	<b>1,859,273</b>	<b>1,735,879</b>

Note: Details may not add to totals due to rounding.

# Explanatory Notes

## 1. Flow of Data into Monthly Treasury Statement

The *Monthly Treasury Statement (MTS)* is assembled from data in the central accounting system. The major sources of data include monthly accounting reports by Federal entities and disbursing officers, and daily reports from the Federal Reserve banks. These reports detail accounting transactions affecting receipts and outlays of the Federal Government and off-budget Federal entities, and their related effect on the assets and liabilities of the U.S. Government. Information is presented in the *MTS* on a modified cash basis.

## 2. Notes on Receipts

Receipts included in the report are classified into the following major categories: (1) budget receipts and (2) offsetting collections (also called applicable receipts). Budget receipts are collections from the public that result from the exercise of the Government's sovereign or governmental powers, excluding receipts offset against outlays. These collections, also called governmental receipts, consist mainly of tax receipts (including social insurance taxes), receipts from court fines, certain licenses, and deposits of earnings by the Federal Reserve System. Refunds of receipts are treated as deductions from gross receipts.

Offsetting collections are from other Government accounts or the public that are of a business-type or market-oriented nature. They are classified into two major categories: (1) offsetting collections credited to appropriations or fund accounts, and (2) offsetting receipts (i.e., amounts deposited in receipt accounts). Collections credited to appropriation or fund accounts normally can be used without appropriation action by Congress. These occur in two instances: (1) when authorized by law, amounts collected for materials or services are treated as reimbursements to appropriations and (2) in the three types of revolving funds (public enterprise, intra governmental, and trust); collections are netted against spending, and outlays are reported as the net amount.

Offsetting receipts in receipt accounts cannot be used without being appropriated. They are subdivided into two categories: (1) proprietary receipts - these collections are from the public and they are offset against outlays by agency and by function, and (2) intra governmental funds - these are payments into receipt accounts from Governmental appropriation or fund accounts. The transactions may be intrabudgetary when the payment and receipt both occur within the budget or from receipts from off-budget Federal entities in those cases where payment is made by a Federal entity whose budget authority and outlays are excluded from the budget totals.

Intrabudgetary transactions are subdivided into three categories: (1) interfund transactions, where the payments are from one fund group (either Federal funds or trust funds) to a receipt account in the other fund group; (2) Federal intrafund transactions, where the payments and receipts both occur within the Federal fund group; and (3) trust intrafund transactions, where the payments and receipts both occur within the trust fund group.

Offsetting receipts are generally deducted from budget authority and outlays by function, by subfunction, or by agency. There are four types of receipts, however, that are deducted from budget totals as undistributed offsetting receipts. They are: (1) agencies' payments (including payments by off-budget Federal entities) as employers into employees retirement funds, (2) interest received by trust funds, (3) rents and royalties on the Outer Continental Shelf lands, and (4) other interest (i.e., interest collected on Outer Continental Shelf money in deposit funds when such money is transferred into the budget).

## 3. Notes on Outlays

Outlays are generally accounted for on the basis of checks issued, electronic funds transferred, or cash payments made. Certain outlays do not require issuance of cash or checks. An example is charges made against appropriations for that part of employees' salaries withheld for taxes or savings bond allotments - these are counted as payments to the employee and credits for whatever purpose the money was withheld. Outlays are stated net of offsetting collections (including receipts of revolving and management funds) and of refunds. Interest on the public debt (public issues) is recognized on the accrual basis. Federal credit programs subject to the Federal Credit Reform Act of 1990 use the cash

basis of accounting and are divided into two components. The portion of the credit activities that involve a cost to the Government (mainly subsidies) is included within the budget program accounts. The remaining portion of the credit activities are in non-budget financing accounts. Outlays of off-budget Federal entities are excluded by law from budget totals. However, they are shown separately and combined with the on-budget outlays to display total Federal outlays.

## 4. Processing

The data on payments and collections are reported by account symbol into the central accounting system. In turn, the data are extracted from this system for use in the preparation of the *MTS*.

There are two major checks which are conducted to assure consistency of the data reported:

1. Verification of payment data. The monthly payment activity reported by Federal entities on the Statements of Transactions is compared to the payment activity of Federal entities as reported by disbursing officers.

2. Verification of collection data. Reported collections appearing on Statements of Transactions are compared to deposits as reported by Federal Reserve Banks.

## 5. Other Sources of Information About Federal Government Financial Activities

- *A Glossary of Terms Used in the Federal Budget Process, 2005* (Available from the U.S. Government Accountability Office, at calling 202-512-6000. This glossary provides a basic reference document of standardized definitions of terms used by the Federal Government in the budget making process).
- *Daily Treasury Statement* (Available on the internet at <http://www.fms.treas.gov/dts/>). The *Daily Treasury Statement* is published each working day of the Federal Government and provides data on the cash and debt operations of the Treasury.
- *Monthly Statement of the Public Debt of the United States* (Available on the internet at <http://www.treasurydirect.gov/govt/reports/pd/mspd/mspd.htm>). This publication provides detailed information concerning the public debt.
- *Treasury Bulletin* (Available from GPO, Washington, D.C. 20401 on a subscription or single copy and on the internet at [http://www.fiscal.treasury.gov/fsreports/rpt/treasBulletin/treasBulletin\\_home.htm](http://www.fiscal.treasury.gov/fsreports/rpt/treasBulletin/treasBulletin_home.htm)). Quarterly, contains a mix of narrative, tables, and charts on Treasury issues, Federal financial operations, international statistics, and special reports.
- *Budget of the United States Government, Fiscal Year 20\_\_* (Available from GPO, Washington, D.C. 20401 on a subscription basis only and on the internet at <http://www.access.gpo.gov/usbudget>). This publication is a single volume which provides budget information and contains:
  - *Appendix, The Budget of the United States Government, FY 20\_\_*
  - *The United States Budget in Brief, FY 20\_\_*
  - *Analytical Perspectives*
  - *Historical Tables*
- *Combined Statement of Receipts, Outlays, and Balances of the United States Government* (Available from Bureau of the Fiscal Service, U.S. Department of Treasury, Washington, D.C. 20227 and on the internet at [http://www.fiscal.treasury.gov/fsreports/rpt/combStmt/combStmt\\_home.htm](http://www.fiscal.treasury.gov/fsreports/rpt/combStmt/combStmt_home.htm)). This report includes budgetary results at the summary level and presents individual receipt and appropriation accounts at the detail level.

**Scheduled Release**

**The release date for the April 2015 Statement  
will be 2:00 p.m. EST May 12, 2015.**

Internet service subscribers can access the current issue of the Monthly Treasury Statement through the Bureau of the Fiscal Service's website:

[http://www.fiscal.treasury.gov/fsreports/rpt/mthTreasStmt/mthTreasStmt\\_home.htm](http://www.fiscal.treasury.gov/fsreports/rpt/mthTreasStmt/mthTreasStmt_home.htm)