



## Installation Steps for Java Access Bridge with JAWS 16



### Application Tip

Before you install the Java Access Bridge with JAWS 16, note the following information:

- JAWS 16.0.4468 and later version is required for Windows 7 64-bit
- Java Access Bridge 2.0.2 is required to support 64-bit systems. The Access Bridge Version also includes packages to support 32-bit Windows systems
- To install firmware you will need Windows Administrator privileges on each computer

### **For Java Access Bridge Installation on Window 64-bit Systems, complete the following steps:**

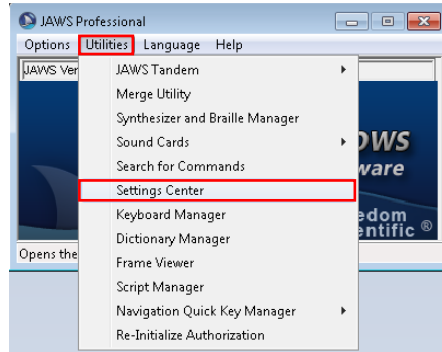
1. Download Java Access Bridge 2.0.2 from the Java Access Bridge home page at the following URL: <http://www.oracle.com/technetwork/java/javase/tech/index-jsp-136191.html>
2. Extract the Java Access Bridge to your C:\ drive and follow these steps to install Java Access Bridge 2.0.2 on a Windows 64-bit system. The detailed instructions are available at: <http://docs.oracle.com/javase/accessbridge/2.0.2/setup.htm#installing-jab-64-bit>
  - a. Copy `WindowsAccessBridge-32.dll` to `[WINDOWSHOME]\SYSWOW64`. `WINDOWSHOME` is the directory where Microsoft Windows is installed (for example, `C:\WINDOWS`)
  - b. Copy **`JavaAccessBridge-32.dll`** and **`JAWTAccessBridge-32.dll`** to `[OTCNET_OFFLINE_HOME_FOLDER]\jre\bin` folder. The `OTCNET_OFFLINE_HOME_FOLDER` is the directory where OTCnet offline was installed.
  - c. Copy **`access-bridge-32.jar`** and **`jaccess.jar`** to `[OTCNET_OFFLINE_HOME_FOLDER]\jre\lib\ext` folder.
  - d. Copy **`accessibility.properties`** to `[OTCNET_OFFLINE_HOME_FOLDER]\jre\lib` folder.

### **For Java Access Bridge Installation on Window 32-bit Systems, complete the following steps:**

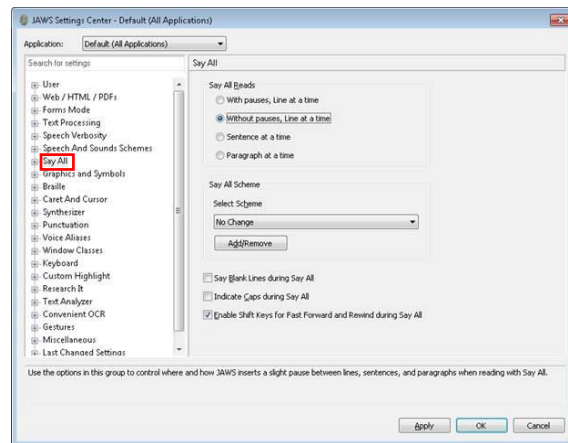
1. Install JAWS 16 (JAWS 16.0.4468 32-bit – English - December 2015) on 32-bit Windows Machine.
2. Download Java Access Bridge 2.0.2 from the Java Access Bridge Home Page at the following URL: <http://www.oracle.com/technetwork/java/javase/tech/index-jsp-136191.html>
3. Extract the Java Access Bridge to your C:\ drive and follow these steps to install Java Access Bridge 2.0.2 on a Windows 32-bit system. The detailed instructions are available at: <http://docs.oracle.com/javase/accessbridge/2.0.2/setup.htm#installing-jab-32-bit>
  - a. Copy **`WindowsAccessBridge.dll`** to `%WINDOWSHOME%\SYSTEM32`. `%WINDOWSHOME%` is the directory where Microsoft Windows is installed (for example, `C:\WINDOWS`)

To avoid JAWS from automatically scrolling, complete the following steps:

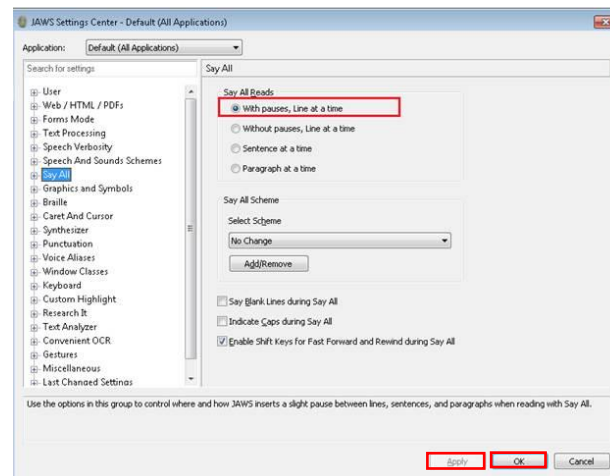
1. Launch **JAWS**
2. Click **Utilities** and click **Settings Center**.



3. Click **Say All** from the left menu pane



4. Under **Say All Reads**, click **With pauses, Line at a time**  
**Note:** Without pauses, Line at a time is the default setting



5. Click **Apply** and then click **OK** to enable the new setting